

1 FLOOR PLAN
GROUND FLOOR

1 : 200

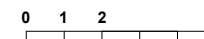
PO Box 5581
West End Qld 4101
07 3844 0890
mail@marcandco.com.au
ABN 16 009 893 636

MARC
&CO

Preliminary
For information only
Not for construction

Check all dimensions on site before fabrication or setout.
Use figured dimensions in preference to scaled.
© Marc&Co.
These designs, drawings and specifications are copyright and must
not be used, kept or copied by any means without written permission.

Client
Owner
Project
ROUNDHOUSE PLACE



Drawing title
FLOOR PLAN - GROUND FLOOR
Scale @ A3
1 : 200

Date
12.07.17

Project No.
1607

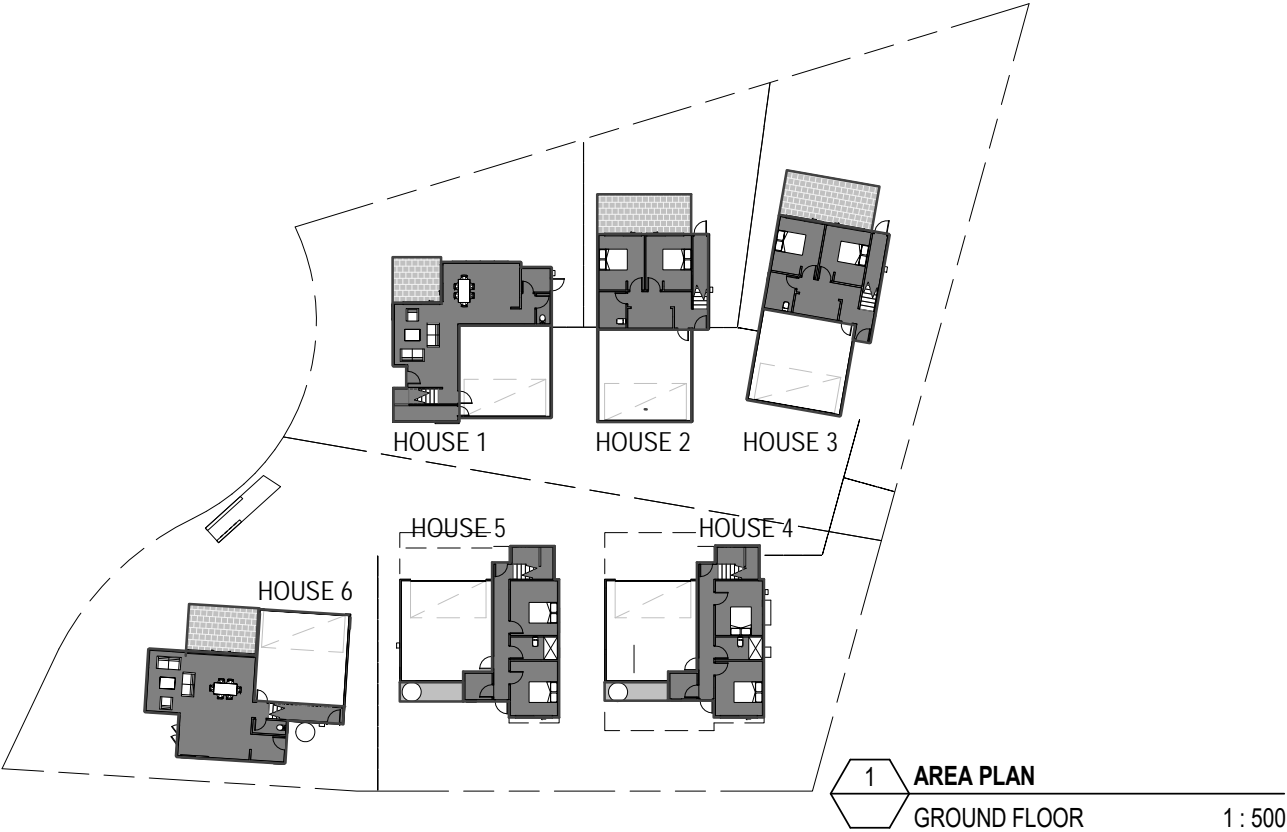
Sheet No.
101

Issue
26



1 FLOOR PLAN
LEVEL 1
1 : 200





INTERNAL AREAS - GFA	
HOUSE NUMBER	AREA
1	130 m ²
2	128 m ²
3	130 m ²
4	143 m ²
5	144 m ²
6	134 m ²
Total	809 m ²

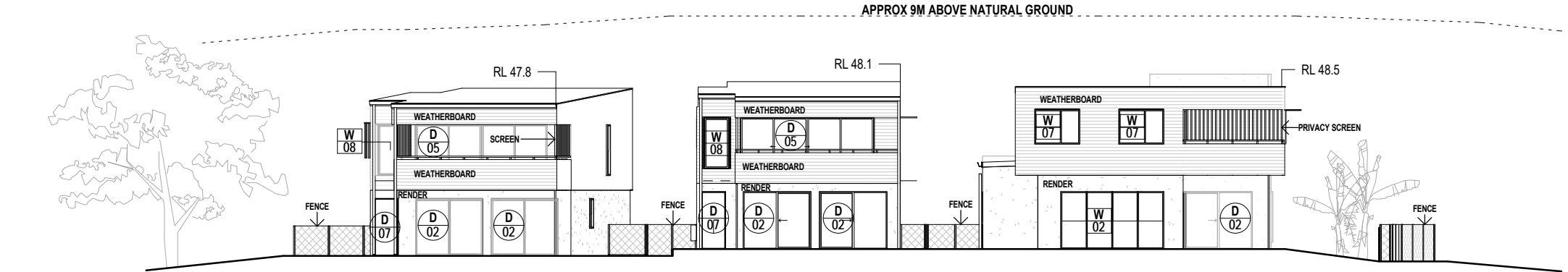
EXTERNAL AREAS - GFA	
HOUSE NUMBER	AREA
1	18 m ²
2	33 m ²
3	37 m ²
4	38 m ²
5	24 m ²
6	27 m ²
Total	177 m ²

NOTE: GFA (GROSS FLOOR AREA) IS MEASURED TO THE INTERNAL FACE OF EXTERNAL WALLS, TO THE CENTRE OF SHARED SEPARATING WALLS, AND EXCLUDES CAR PARKING. AREA PLANS SHOWN TO CLARIFY EXTENTS.



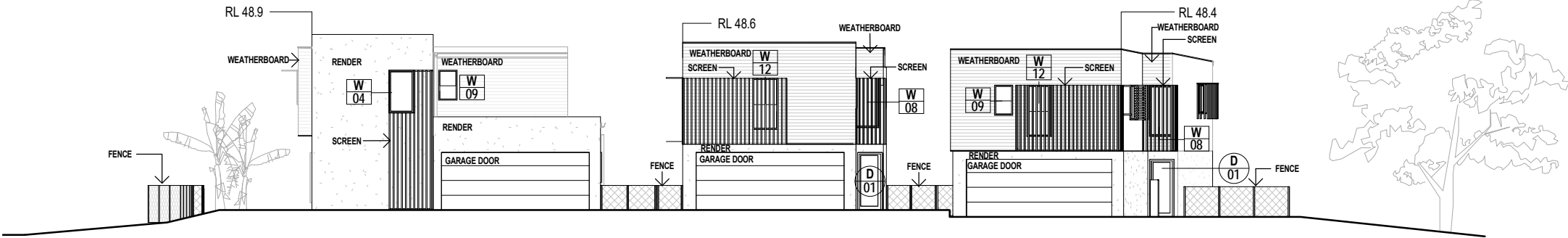
DOOR SCHEDULE			
NO.	WIDTH	HEIGHT	DESCRIPTION
01	900	2100	PAINT FINISHED TIMBER FRAMED EXTERNAL GRADE SWING DOOR WITH GLASS INFILL PANEL
02	2470	2100	ALUMINIUM FRAMED XO SLIDING DOOR, CLEAR GLASS, INSECT SCREENS
03	4372	2100	ALUMINIUM FRAMED OXXO SLIDING DOOR, CLEAR GLASS, INSECT SCREENS
04	2170	2100	ALUMINIUM FRAMED XO SLIDING DOOR, CLEAR GLASS, INSECT SCREENS
05	4852	2100	ALUMINIUM FRAMED OXXO SLIDING DOOR, CLEAR GLASS, INSECT SCREENS
06	5304	2100	ALUMINIUM FRAMED OXXXXO SLIDING DOOR, CLEAR GLASS, INSECT SCREENS
07	884	2102	PAINT FINISHED TIMBER FRAMED EXTERNAL GRADE SWING DOOR

WINDOW SCHEDULE			
NO.	WIDTH	HEIGHT	Description
01	1000	1840	ALUMINIUM FRAMED POWDERCOATED LOUVRE WINDOW, CLEAR GLASS, INSECT SCREENS
02	3760	2095	ALUMINIUM FRAMED POWDERCOATED 4x 970W DOUBLE HUNG WINDOW SASHES, CLEAR GLASS, INSECT SCREENS
03	670	1090	PAINT FINISHED TIMBER FRAMED CASEMENT WINDOWS, SOLID LEAF
04	910	1560	ALUMINIUM FRAMED POWDERCOATED FIXED GLASS WINDOW, CLEAR GLASS
05	400	1860	ALUMINIUM FRAMED POWDERCOATED FIXED GLASS WINDOW, CLEAR GLASS
06	970	1260	ALUMINIUM FRAMED POWDERCOATED DOUBLE HUNG WINDOW, BOTTOM SASH BCA COMPLIANT, CLEAR GLASS, INSECT SCREENS
07	1640	1260	ALUMINIUM FRAMED POWDERCOATED 2x SASHES, 1x 670W FIXED CLEAR GLASS + 1x 970W DOUBLE HUNG WINDOW, BOTTOM SASH FIXED, BCA COMPLIANT, CLEAR GLASS, INSECT SCREENS
08	910	1860	ALUMINIUM FRAMED POWDERCOATED FIXED GLASS WINDOW, CLEAR GLASS
09	670	1090	ALUMINIUM FRAMED POWDERCOATED DOUBLE HUNG WINDOW, BOTTOM SASH BCA COMPLIANT, FROSTED GLASS, INSECT SCREENS
10	1630	1800	ALUMINIUM FRAMED POWDERCOATED CORNER SLIDING WINDOW 2x SASHES, 1x 1630W CLEAR GLASS, 1x 1270W CLEAR GLASS
11	1860	1090	ALUMINIUM FRAMED POWDERCOATED XO SLIDING WINDOW, CLEAR GLASS
12	910	1860	ALUMINIUM FRAMED POWDERCOATED DOUBLE HUNG WINDOW, BOTTOM SASH BCA COMPLIANT, CLEAR GLASS, INSECT SCREENS
13	1640	1090	ALUMINIUM FRAMED POWDERCOATED 2x SASHES, 1x 670W FIXED CLEAR GLASS + 1x 970W DOUBLE HUNG WINDOW, CLEAR GLASS, INSECT SCREENS
14	5260	1090	ALUMINIUM FRAMED POWDERCOATED 6x 910W DOUBLE HUNG WINDOW SASHES, CLEAR GLASS, INSECT SCREENS
15	2470	1090	ALUMINIUM FRAMED POWDERCOATED 3x SASHES, 1x 770W FIXED CLEAR GLASS + 2x 770W DOUBLE HUNG WINDOW, BOTTOM SASH FIXED, BCA COMPLIANT, CLEAR GLASS, INSECT SCREENS
16	670	1090	ALUMINIUM FRAMED POWDERCOATED DOUBLE HUNG WINDOW, BCA COMPLIANT, CLEAR GLASS, INSECT SCREENS
17	670	1860	ALUMINIUM FRAMED POWDERCOATED DOUBLE HUNG WINDOW, BCA COMPLAINT, CLEAR GLASS, INSECT SCREENS



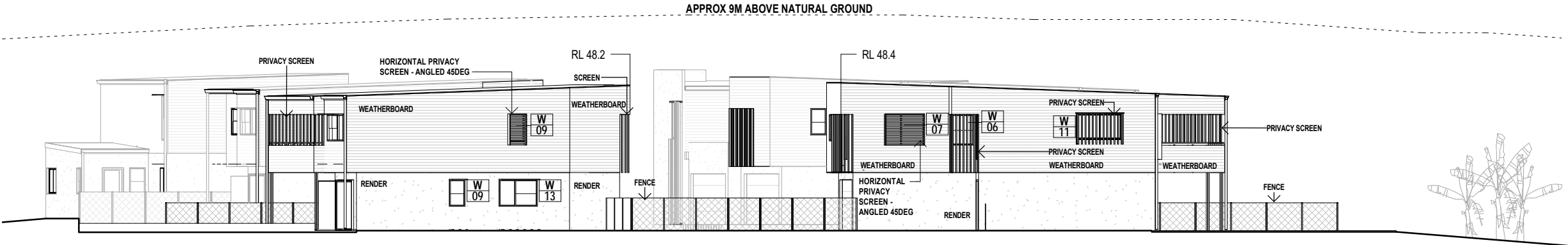
2	ELEVATION
	NORTH

1 : 200



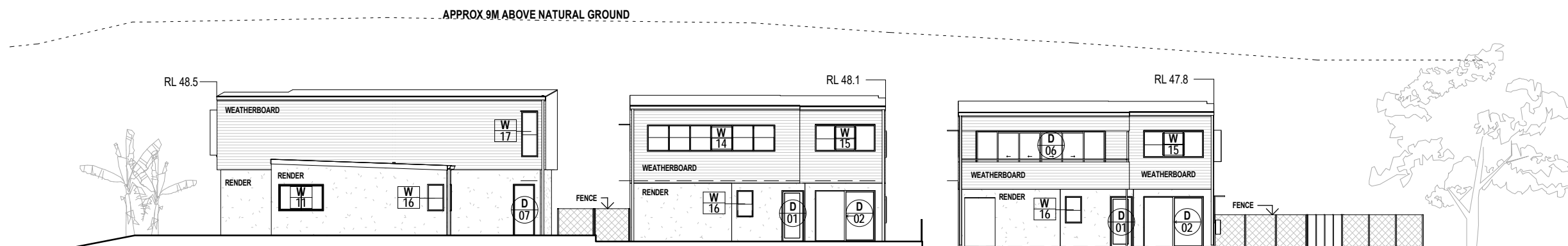
1	ELEVATION
100	DRIVEWAY - NORTH

1 : 200

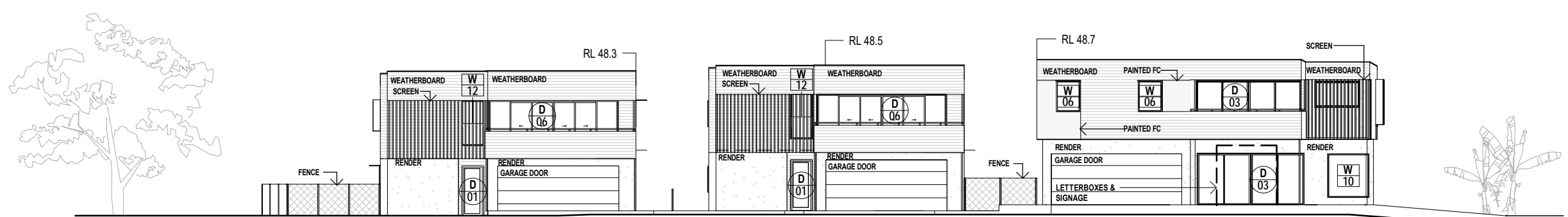


3	ELEVATION
	EAST

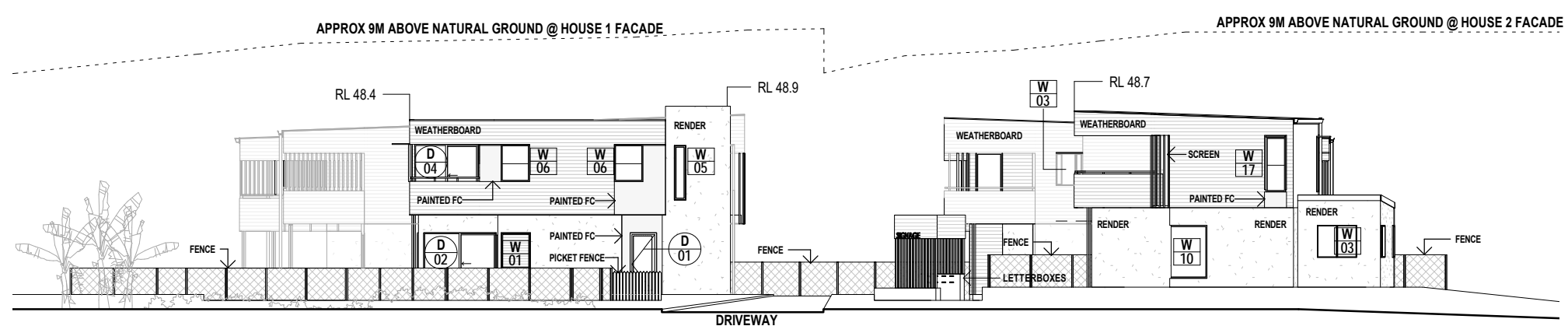
1 : 200



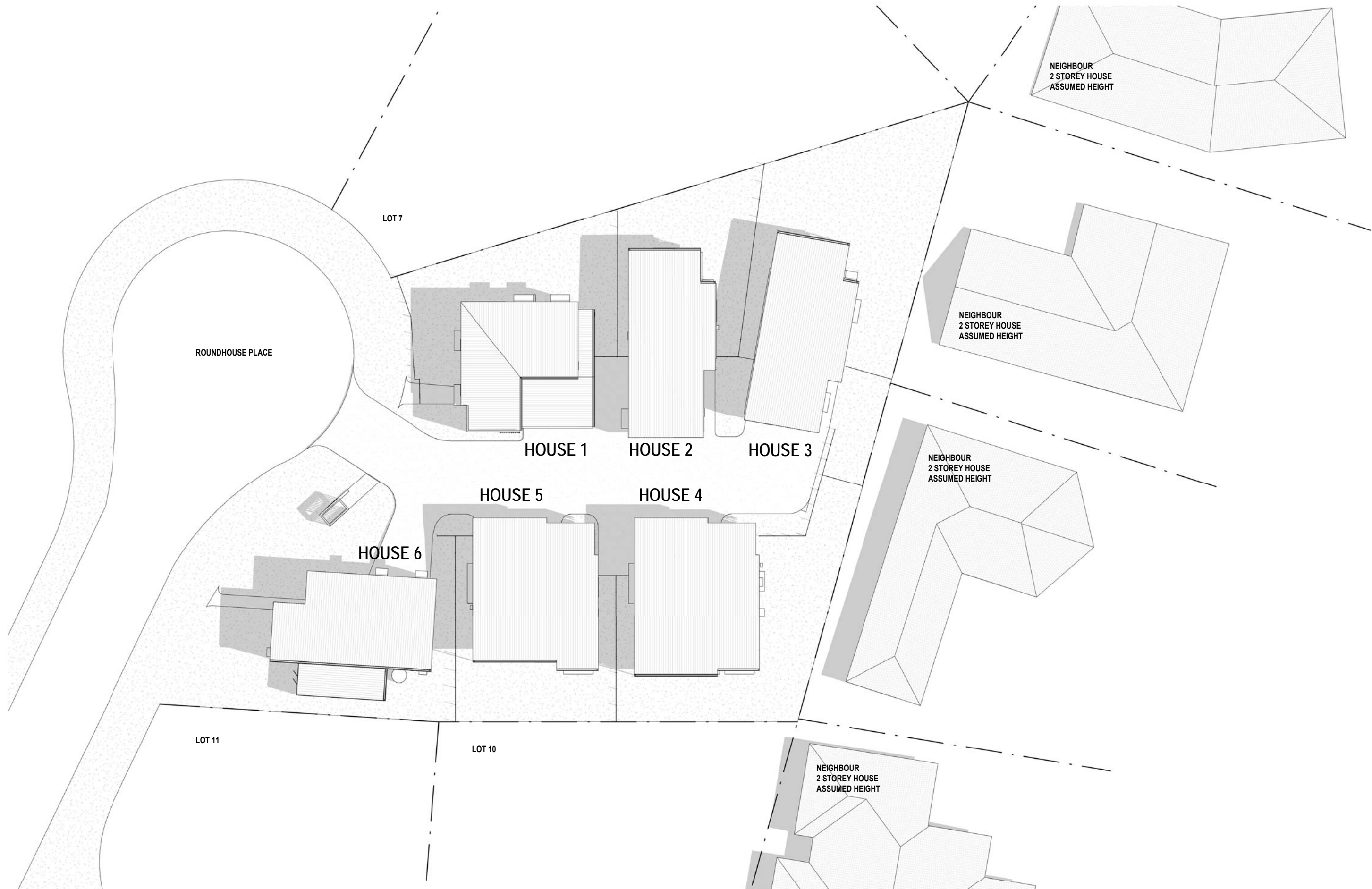
1	ELEVATION	
	SOUTH	1 : 200



2	ELEVATION	
	DRIVEWAY - SOUTH	1 : 200

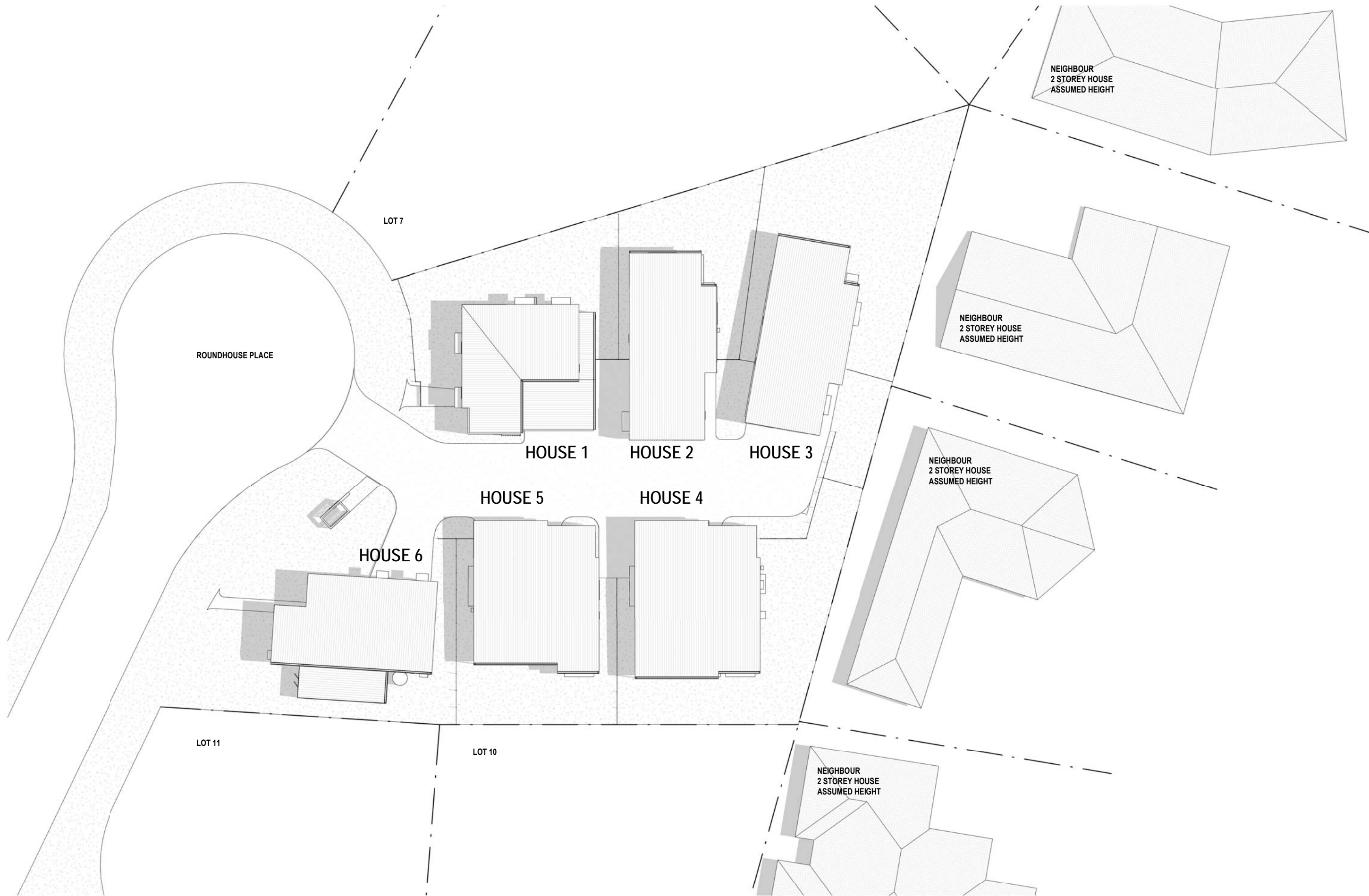


3	ELEVATION	
	WEST (STREET)	1 : 200



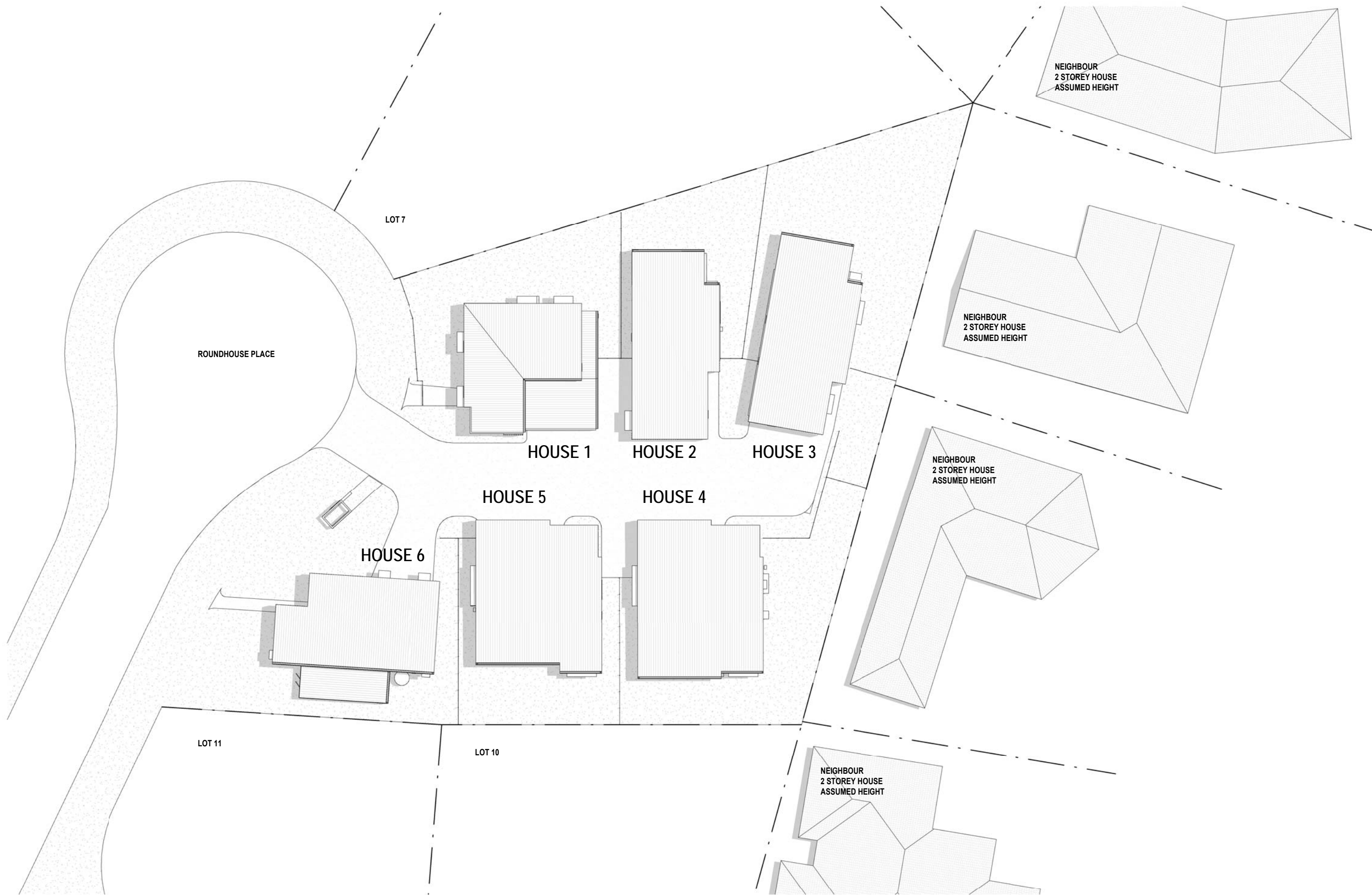
1 SITE PLAN
SUMMER - 9AM





1 SITE PLAN
SUMMER - 10AM

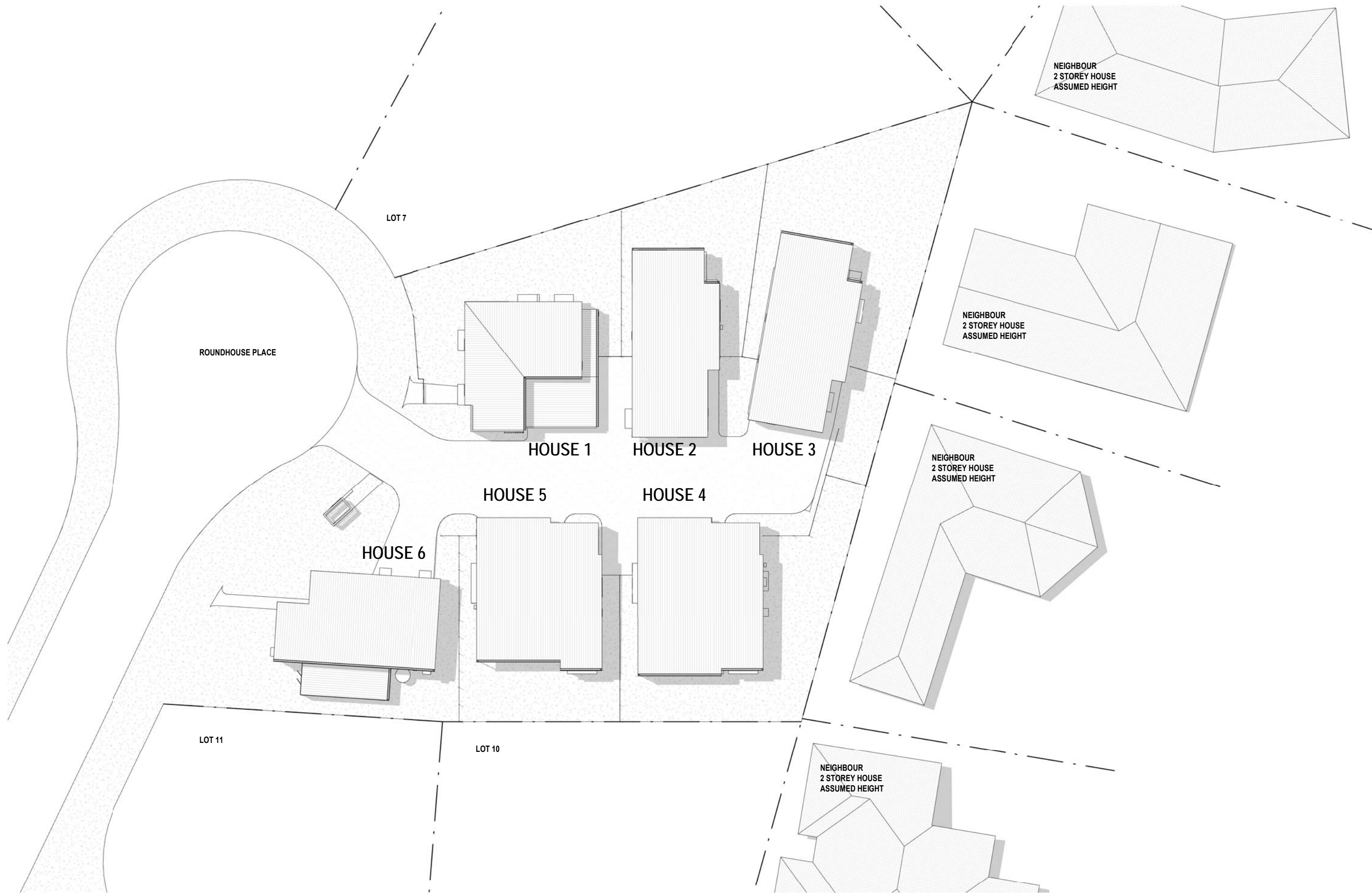




1 SITE PLAN
SUMMER - 11AM

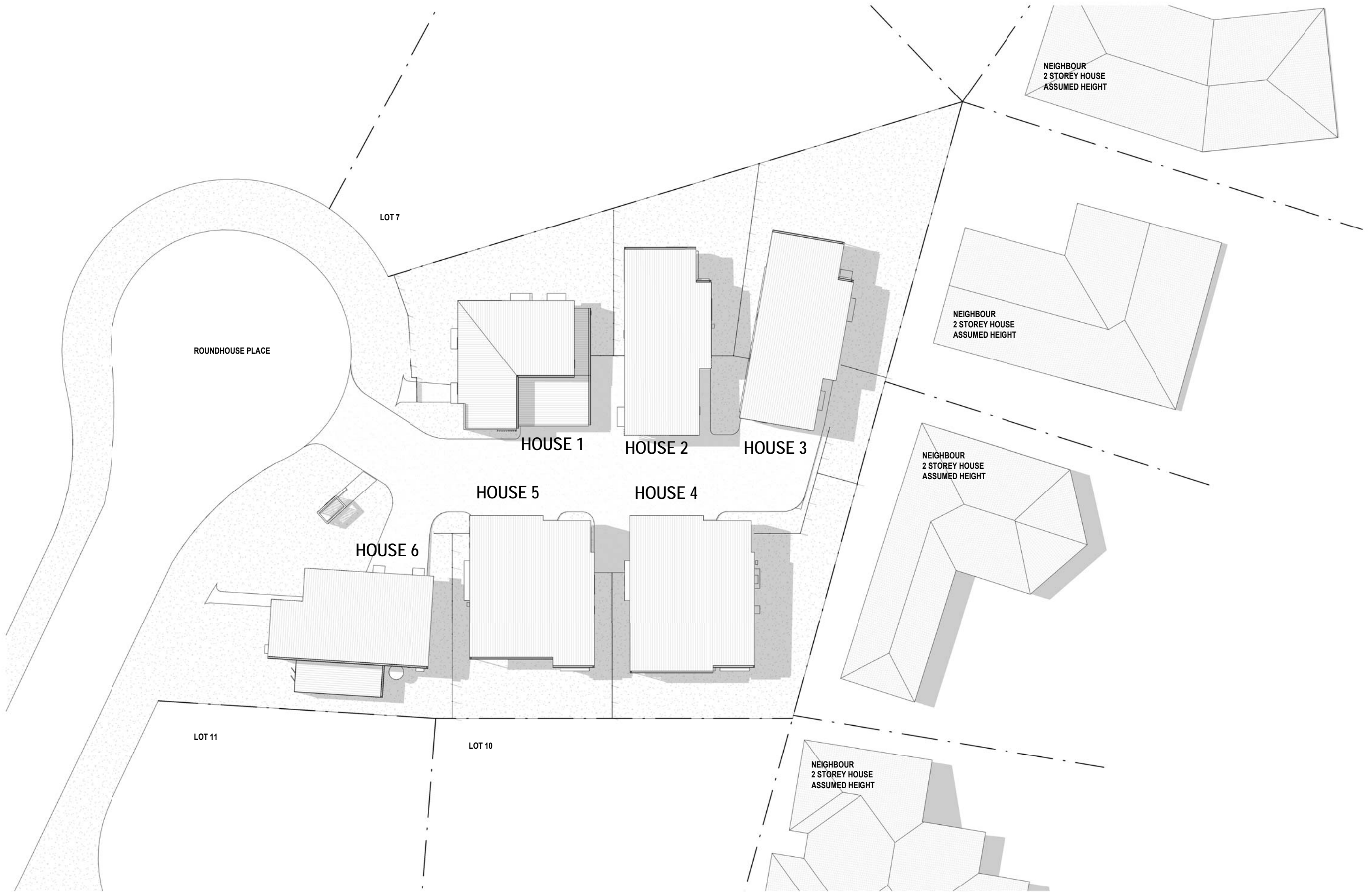






1 SITE PLAN
SUMMER - 1PM





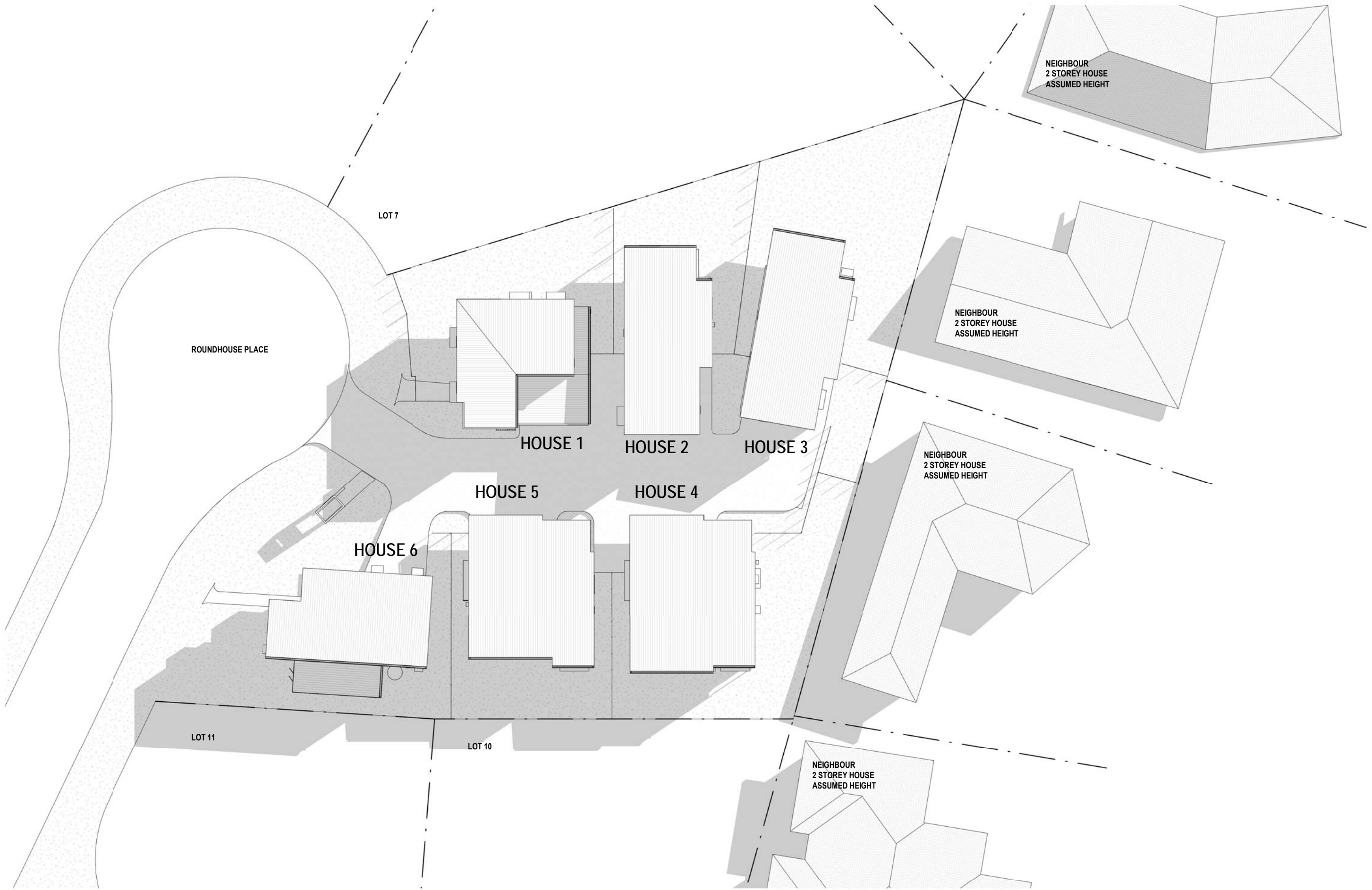
1 SITE PLAN
SUMMER - 2PM





1 SITE PLAN
SUMMER - 3PM





1 SITE PLAN
WINTER - 9AM





1 SITE PLAN
WINTER - 10AM





1 SITE PLAN
WINTER - 11AM





1 SITE PLAN
WINTER - 12PM





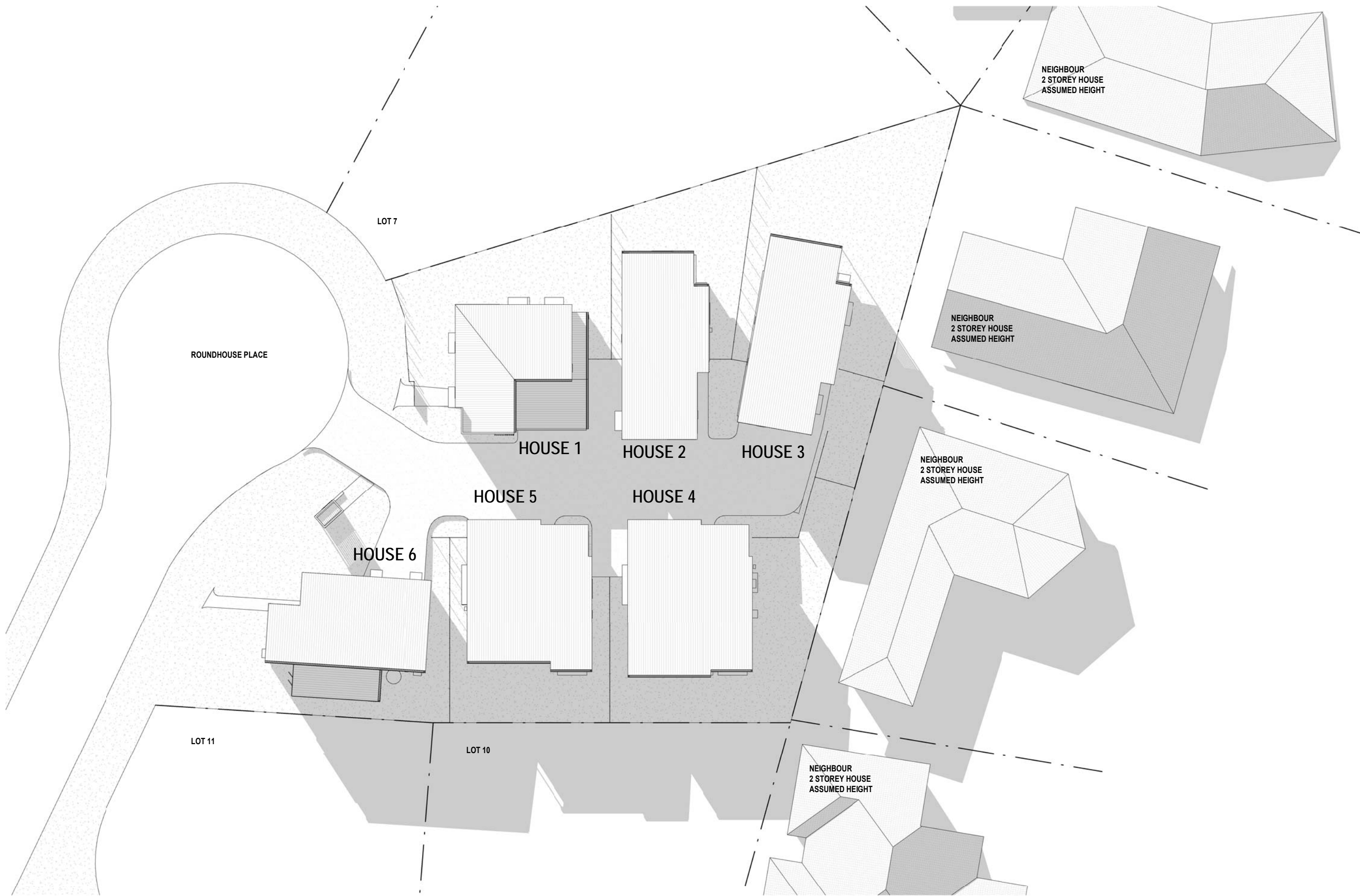
1 SITE PLAN
WINTER - 1PM





1 SITE PLAN
WINTER - 2PM





1 SITE PLAN
WINTER - 3PM

