

NOTICE OF MEETING



EXTRAORDINARY LOCAL TRAFFIC COMMITTEE MEETING

An Extraordinary Local Traffic Committee Meeting of Byron Shire Council will be held as follows:

Venue	Via Email
Date	16 -23 April 2020
Time	Electronic Meeting
Committee Members	Ian Shanahan – Transport for NSW Snr Constable Chris Davis – Police Cr Basil Cameron Tamara Smith MP

BYRON SHIRE COUNCIL
EXTRAORDINARY LOCAL TRAFFIC COMMITTEE MEETING

BUSINESS OF MEETING

- 1. APOLOGIES**
- 2. DECLARATIONS OF INTEREST – PECUNIARY AND NON-PECUNIARY**
- 3. ADOPTION OF MINUTES FROM PREVIOUS MEETINGS**
 - 3.1 Local Traffic Committee Meeting held on 10 March 2020
- 4. MATTERS ARISING**
- 5. OUTSTANDING ISSUES/RESOLUTIONS**
- 6. REGULATORY MATTERS**
 - 6.1 Parking time limits -South Beach Rd, Brunswick Heads3

REGULATORY MATTERS

Report No. 6.1 Parking time limits -South Beach Rd, Brunswick Heads
 File No: I2020/555

5

In response to the current COVID-19 pandemic and concerns about the public not adhering to recommended requirements for social distancing and minimal travel, Mayor Richardson has used his delegated authority under section 266 (d) of the LGA to introduce new parking restrictions to the area east of South Arm Bridge, Brunswick Heads.

10

This decision was made by the Mayor following Local Area Emergency Management Committee meetings, and signage changed on 9 April.

Figure 1. shows the signage proposed by Council Staff for installation. It is noted that these signs have already been installed prior to the Easter Long weekend to act as a deterrent and are subject to LTC review and comments.

15

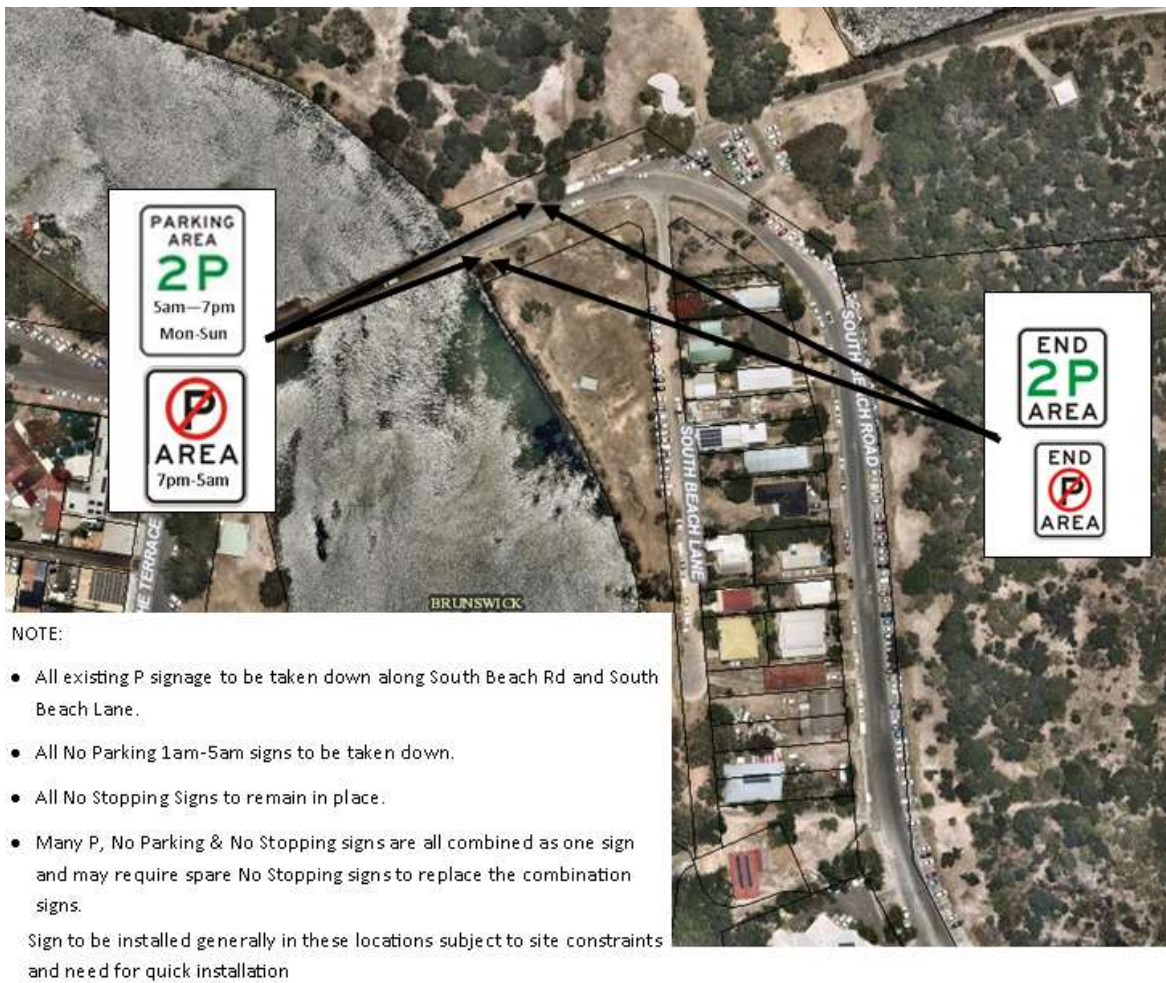


Figure 1. Signage plan

Recommendation:

This report seeks LTC support for the “South Beach Parking Area” parking changes that were implemented 9/4/2020 and the signage installed in the locations shown in Figure 1.

5

- 2P Parking Area 5am-7am Monday to Sunday
- No Parking Area 7pm-5am
- End 2P Parking Area
- End No Parking Area
- removal of existing regulatory parking signs

10

RECOMMENDATION:

That Council implement 2P parking time limits in South Beach Road and South Beach Lane from 5am – 7am Monday to Sunday, and No Parking 7pm - 5am with signage as per signage plan in Figure 1.