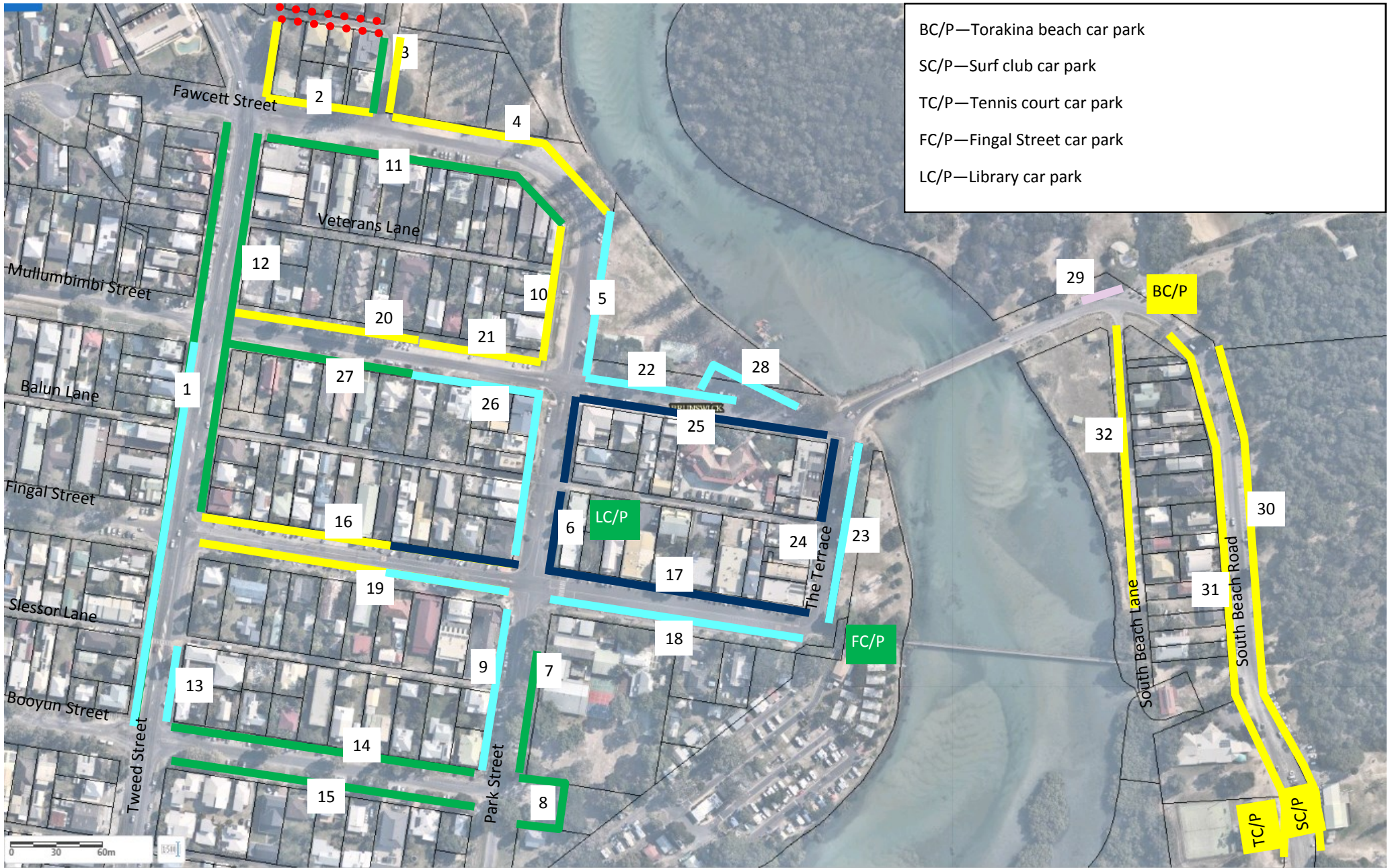


BC/P—Torakina beach car park  
 SC/P—Surf club car park  
 TC/P—Tennis court car park  
 FC/P—Fingal Street car park  
 LC/P—Library car park

Current Parking Limits

Legend: █ All Day █ 4P █ 3P █ 2P █ 1P



Preferred Parking Limits

- Legend: █ All Day █ 4P █ 3P █ 2P █ 1P  
●●●● No Stopping █ 15 min

| <b>Zone</b>                                     | <b>Time Limits</b>       | <b>No. of Parks in Each Zone</b> |
|---|--------------------------|----------------------------------|
| 01 - Tweed Street (Booyun St - Fawcett St)      | ALL DAY PARKING MON-SUN  | 30                               |
| 02 - Fawcett St (Tweed St - Mona Ln)            | ALL DAY PARKING MON-SUN  | 8                                |
| 03 - Mona Ln (Fawcett St - Tweed St)            | ALL DAY PARKING MON-SUN  | 15                               |
| 04 - Fawcett St (Mona Ln - Park St)             | ALL DAY PARKING MON-SUN  | 30                               |
| 05 - Park St (Fawcett St - Balun Ln)            | 2P MON-SUN 9:00AM 5:00PM | 28                               |
| 06 - Park St (Balun Ln - Fingal St)             | 1P MON-SUN 9:00AM 5:00PM | 4                                |
| 07 - Park St (Fingal St - Booyun St)            | ALL DAY PARKING MON-SUN  | 17                               |
| 08 - Booyun St C/P(Park St - Dead End)          | 4P MON-SUN 9:00AM 5:00PM | 15                               |
| 09 - Park St (Booyun St - Fingal St)            | ALL DAY PARKING MON-SUN  | 17                               |
| 10 - Park St (Fingal St - Fawcett St)           | 2P MON-SUN 9:00AM 5:00PM | 27                               |
| 11 - Fawcett St (Park St - Tweed ST)            | ALL DAY PARKING MON-SUN  | 36                               |
| 12 - Tweed Street (Fawcett St - Fingal St)      | ALL DAY PARKING MON-SUN  | 16                               |
| 13 - Tweed Street (Fingal St - Booyun St)       | 2P MON-SUN 9:00AM 5:00PM | 11                               |
| 14 - Booyun St - (Tweed St - Park St)           | ALL DAY PARKING MON-SUN  | 34                               |
| 15 - Booyun St - (Park St - Tweed St)           | ALL DAY PARKING MON-SUN  | 31                               |
| 16 - Fingal St (Tweed St - Park St)             | ALL DAY PARKING MON-SUN  | 45                               |
| 17 - Fingal St (Park St - The Terrace)          | 1P MON-SUN 9:00AM 5:00PM | 42                               |
| 18 - Fingal St (The Terrace - Tweed St)         | 2P MON-SUN 9:00AM 5:00PM | 36                               |
| 19 - Fingal St (Park St - Tweed St)             | ALL DAY PARKING MON-SUN  | 44                               |
| 20 - Mullumbimbi St (Tweed St - Park St)        | ALL DAY PARKING MON-SUN  | 19                               |
| 21 - Mullumbimbi St (Tweed St - Park St)        | 3P MON-SUN 9:00AM 5:00PM | 31                               |
| 22 - Mullumbimbi St (Park St - The Terrace)     | 2P MON-SUN 9:00AM 5:00PM | 14                               |
| 23 - The Terrace (Mullumbimbi St - Fingal St)   | 1P MON-SUN 9:00AM 5:00PM | 19                               |
| 24 - The Terrace (Fingal St - Mullumbimbi St)   | 2P MON-SUN 9:00AM 5:00PM | 4                                |
| 25 - Mullumbimbi St (The Terrace - Park St)     | 1P MON-SUN 9:00AM 5:00PM | 16                               |
| 26 - Mullumbimbi St (Park St - Tweed St)        | 2P MON-SUN 9:00AM 5:00PM | 7                                |
| 27 - Mullumbimbi St (Park St - Tweed St)        | ALL DAY PARKING MON-SUN  | 19                               |
| 28 - Mullumbimbi St (Car Park)                  | 2P MON-SUN 9:00AM 5:00PM | 23                               |
| 29 - South Beach Rd (The Terrace - Torakina)    | ALL DAY PARKING MON-SUN  | 4                                |
| 30 - South Beach Rd (Torakina - Dead End)       | ALL DAY PARKING MON-SUN  | 98                               |
| 31 - South Beach Rd (Dead End - South Beach Ln) | ALL DAY PARKING MON-SUN  | 27                               |
| 32 - South Beach Ln (South Beach Rd - Dead End) | ALL DAY PARKING MON-SUN  | 34                               |
| BC/P—Torakina beach car park                    | ALL DAY PARKING MON-SUN  | 29                               |
| SC/P—Surf club car park                         | ALL DAY PARKING MON-SUN  | 54                               |
| TC/P—Tennis court car park                      | ALL DAY PARKING MON-SUN  | 27                               |
| FC/P—Fingal Street car park                     | ALL DAY PARKING MON-SUN  | 12                               |
| LC/P—Library car park                           | ALL DAY PARKING MON-SUN  | 12                               |