

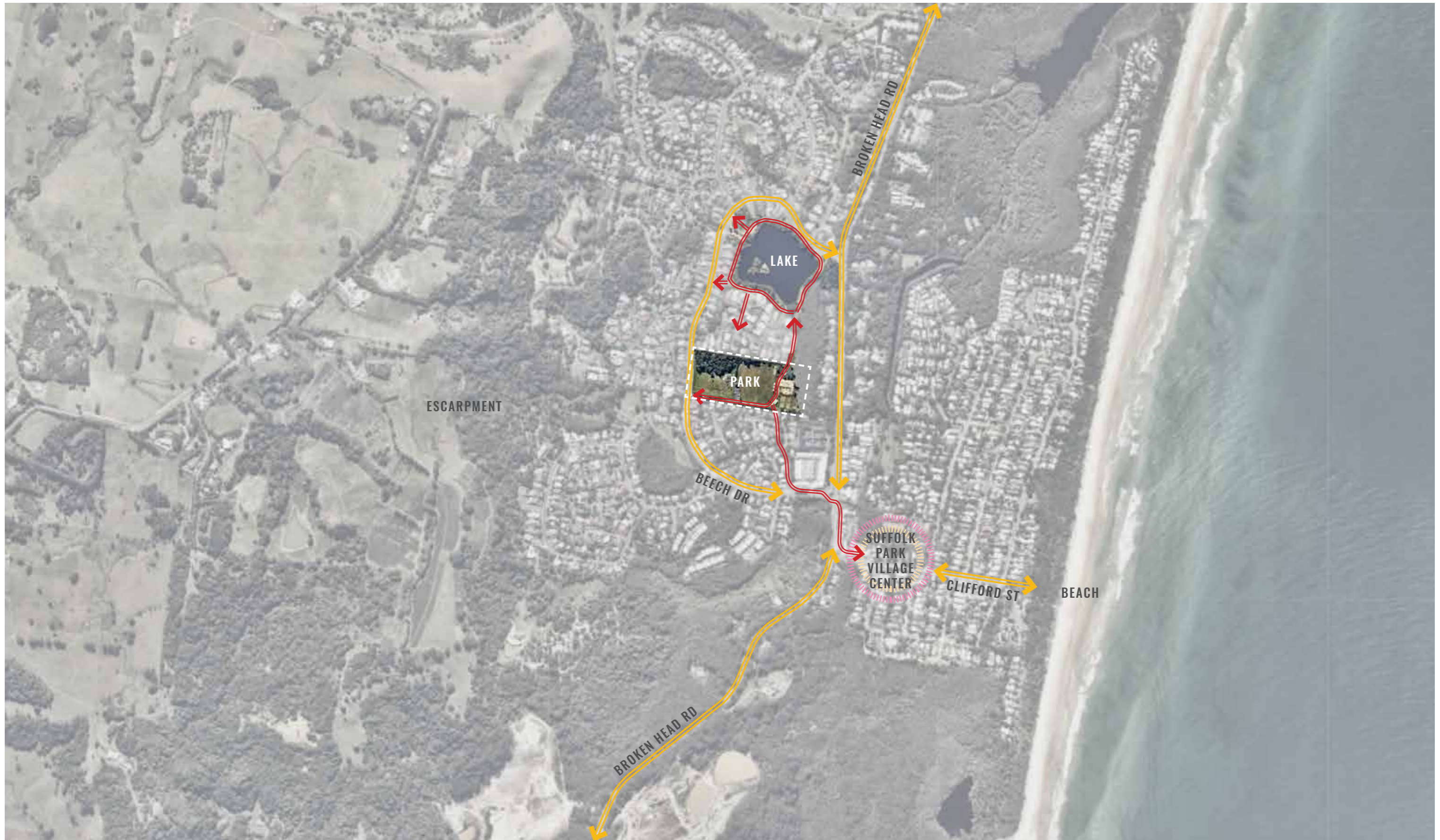
SUFFOLK PARK COMMUNITY PARK MASTERPLAN  
a place for the community



March 2018

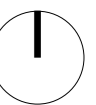
PLUMMER & SMITH  
plummerandsmith.com.au

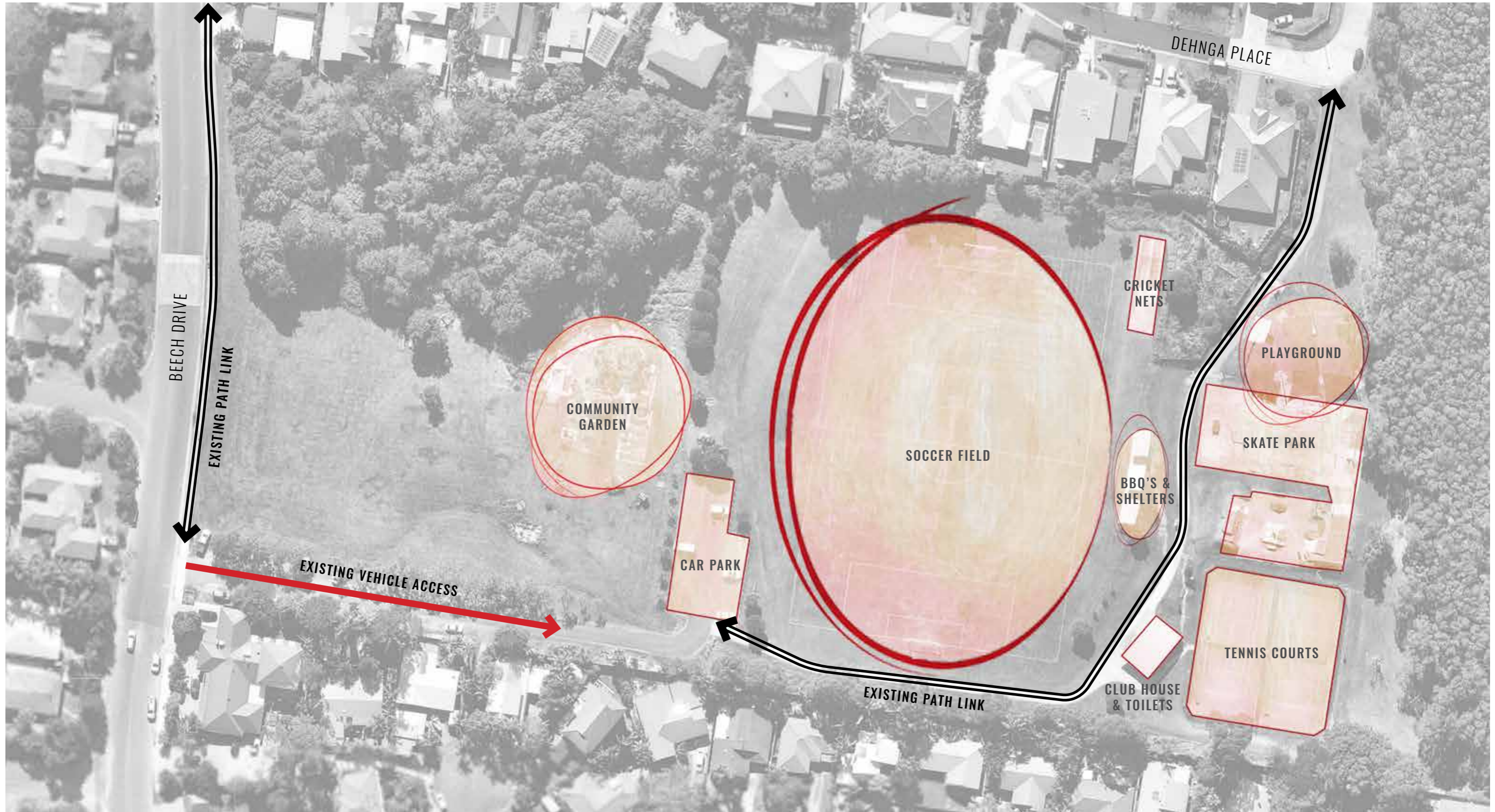




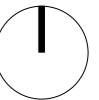
- EXISTING PEDESTRIAN LINKS
- MAIN ROADS AROUND THE SITE

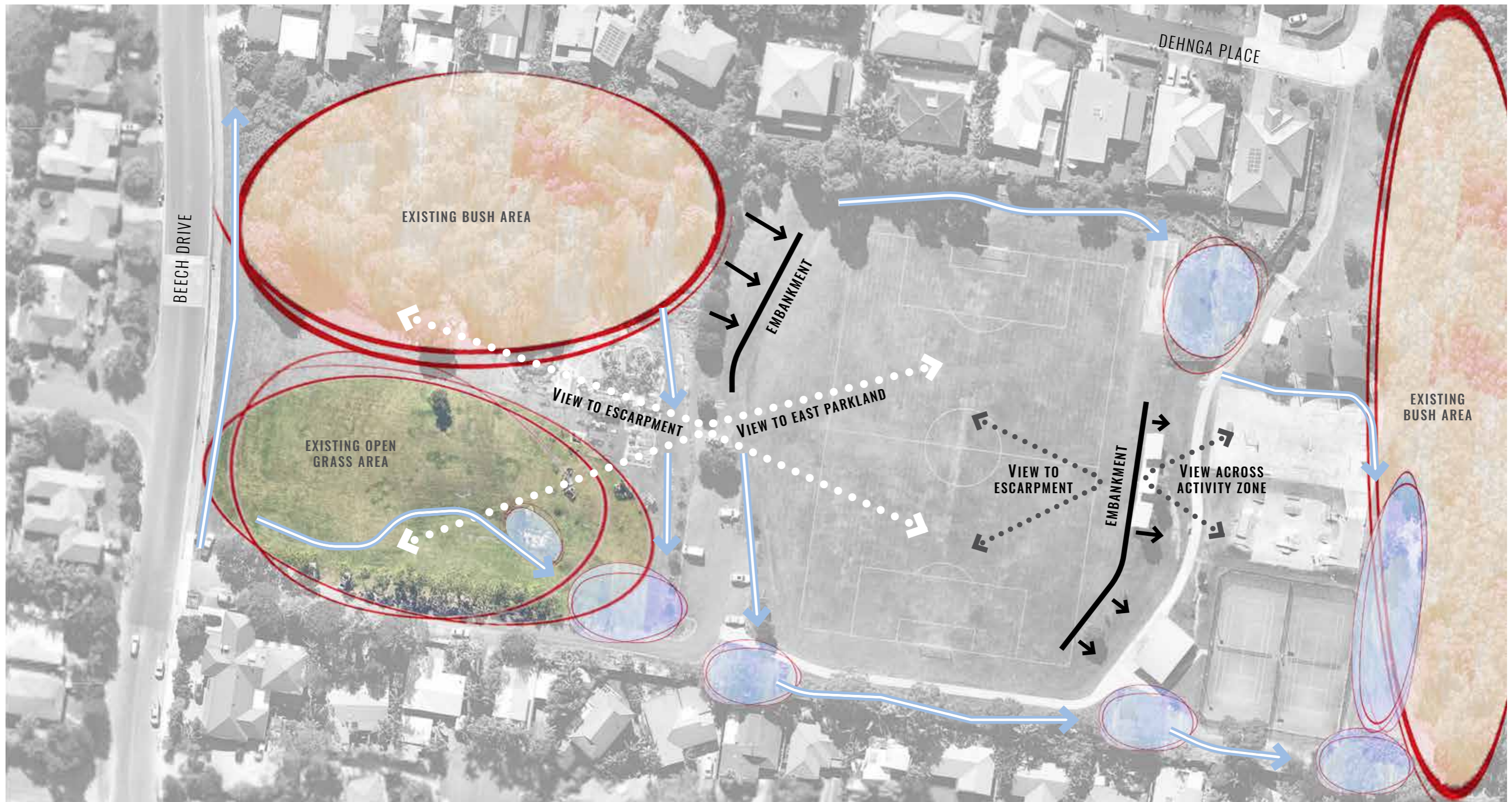
SCALE 0 50 100 150 200 m








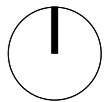
SCALE 0 5 10 15 20 m



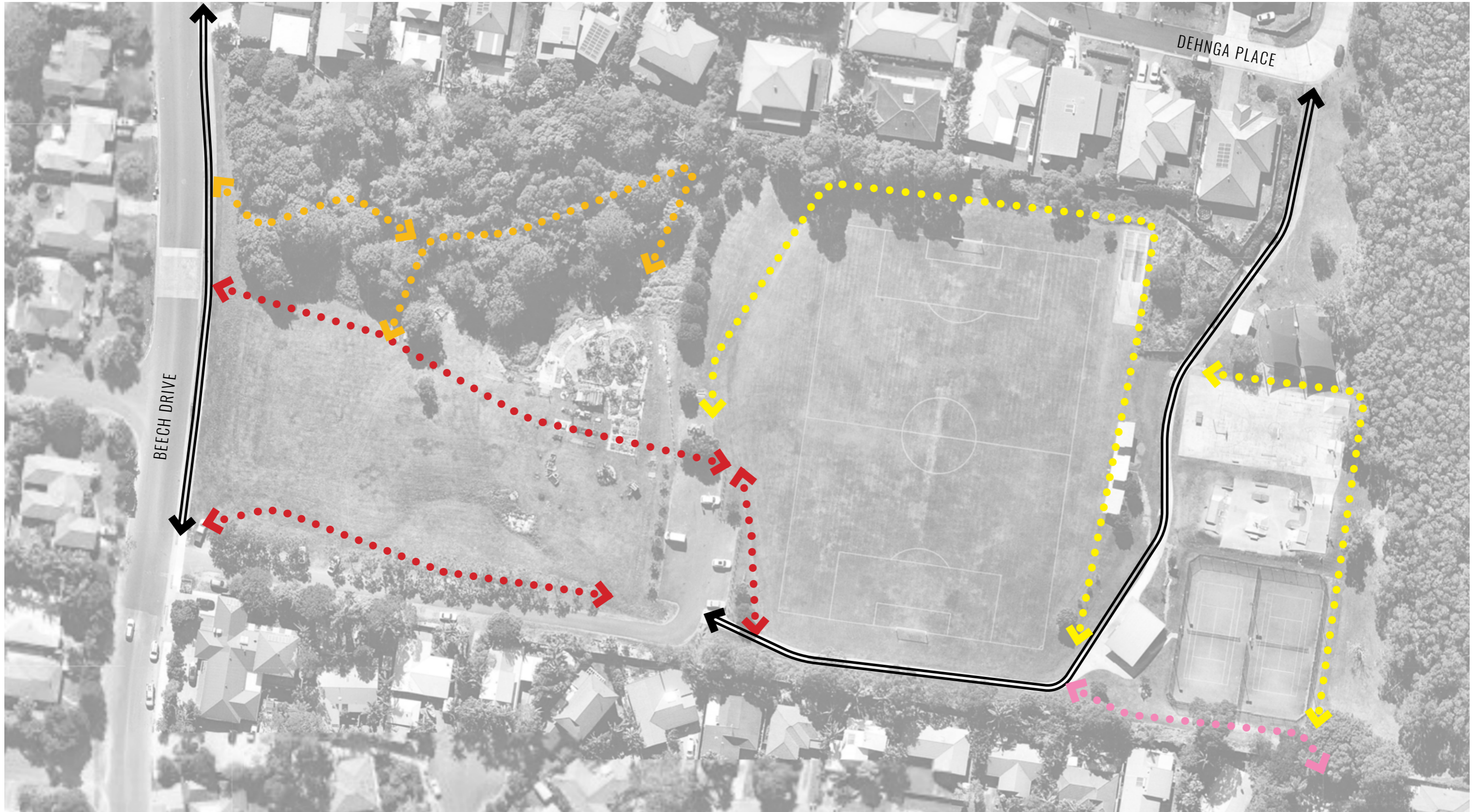





-  DRAINAGE LINES
-  WET AREAS
-  VIEW LINES



SCALE 0 5 10 15 20 m



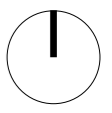
LINKAGES- POTENTIAL & EXISTING \_\_\_\_\_ opportunities to increase park use & value



-  EXISTING PATH LINKS
-  IMPROVE WEST PARK LINKS
-  IMPROVE SOUTH/ EAST PARK LINK

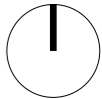
-  IMPROVE PARK CIRCULATION LINKS
-  NATURE TRAILS THROUGH BUSH AREA

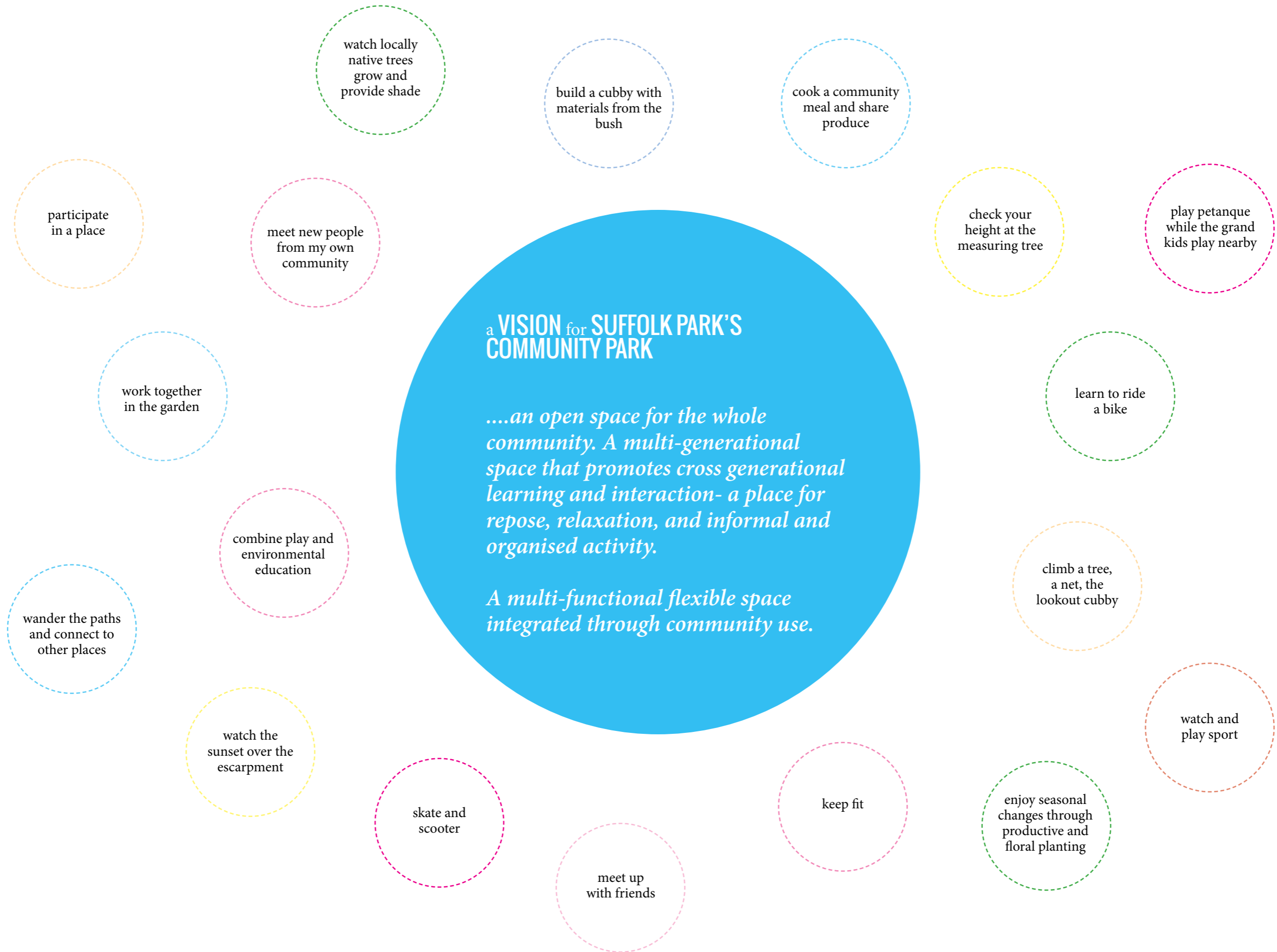
SCALE 0 5 10 15 20 m





SCALE 0 5 10 15 20 m







- 1. New entry path and associated planting
- 2. Park wayfinding / identifier
- 3. New entry path providing a maintenance edge and access to the bush area
- 4. Informal trails through the existing bush area
- 5. Areas of introduced landforming and topography for informal picnicing
- 6. Proposed 'pump-track'- sealed surface bike and scooter track
- 7. New tree planting combining an avenue entry with informal tree planting- proposed location for new exercise equipment space
- 8. Community garden integrated with surrounding park areas
- 9. New community garden storage shed
- 10. New shelter and gathering spaces including BBQ, picnic tables and natural shade

- 11. Drainage planting areas- path elevated
- 12. Community gathering space and shelter. Area positioned to benefit from views across playing fields, views to the escarpment to the west, and proximity to the community garden, proposed nature play, and the existing car park
- 13. Nature play area positioned adjacent to the community garden to encourage interaction and to combine productive planting with sensory and nature play activities
- 14. Embankment slides utilising existing topography
- 15. Play cubby and lookout
- 16. Concrete seating wall for minor retaining
- 17. New circulation paths providing circuits for walking, riding and scootering
- 18. New planting areas associated with existing drainage lines

- 19. New paths connecting to existing park shelters
- 20. New trees to increase existing planting along bank- improving shade provision
- 21. Area proposed for potential clubhouse extension
- 22. New paths along existing desire line
- 23. New concrete terraces and planted arbour associated with existing skate park ramp and grass bank
- 24. Potential large permeable shade structure
- 25. New trees planted between the skate park areas to increase shade and amenity
- 26. New path and drainage line combined
- 27. New concrete seating wall and associated planting
- 28. New shelter and associated BBQ
- 29. New bocce / petanque court



Potential for 'natural' trails through existing vegetated area. Vegetation to be managed to reduce weeds.

New path hugs edge of existing trees- providing natural area access points and a maintenance edge.

New seats strategically placed for views and park user comfort

Open grass area for informal recreation

Proposed location for shaded exercise equipment

Existing trees along access drive supplemented with additional plantings providing shaded edges to the open space area

EXISTING VEGETATION AREAS- ENHANCED WITH WEED MANAGEMENT AND SELECTED PLANTING

COMMUNITY GARDEN

PLAY

SHELTER

SHELTER

EXISTING CAR PARK

INFORMAL CAR PARKING

EXISTING VEHICULAR ACCESS

New path and associated drainage

Lookout cubby

Nature play and sensory garden rock and herb spiral mounds

Rock lined drainage swale becomes a nature play and sensory garden feature

Central gathering space/ shelter with associated picnic tables and BBQ

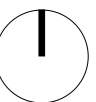
NOTE: Seats with backrests to be provided at optimal locations along new paths -locations with shade and prospect.

✳ Potential ornamental gate locations

✚ Park Wayfinding / Identifier

W New drinking fountain

SCALE 0 5 10 15 20 m



JOINS PREVIOUS PAGE



New seats

New path provides a bike and walking circuit around open space

Existing cricket nets retained

New shade / climbing plant arbour and associated concrete terraces

New path links to existing shelters and BBQ's

Path links to lake circuit

Bocce / petanque court with associated seating

New shelter and BBQ

Existing shelter

Seating edge provides a barrier between playground and skate/ bike area

New concrete dish drain doubles as an adventure bike and scooter trail

Large shade arbour

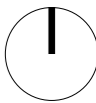
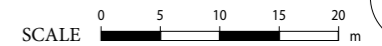
New shade trees and seating

Arbour over link between skate areas

Zone for potential clubhouse extension

New paths provide bike and scooter circuits

★ Existing drinking fountains retained





- 1. New entry path and associated planting
- 2. Potential permeable paving to informal parking areas
- 3. New entry path providing a maintenance edge and access to the bush area
- 4. Informal trails through the existing bush area
- 5. Areas of introduced landforming and topography for informal picnicing
- 6. Proposed 'pump-track'- sealed surface bike and scooter track
- 7. New tree planting combining an avenue entry with informal tree planting- proposed location for new exercise equipment space
- 8. Community garden integrated with surrounding park areas
- 9. New community garden storage shed
- 10. New shelter and gathering spaces including BBQ, picnic tables and natural shade

- 11. Drainage planting area- path elevated
- 12. Community gathering space and shelter. Area positioned to benefit from views across playing fields, views to the escarpment to the west, and proximity to the community garden, proposed nature play, and the existing car park
- 13. Nature play area positioned adjacent to the community garden to encourage interaction and to combine productive planting with sensory and nature play activities
- 14. Embankment slides utilising existing topography
- 15. Play cubby and lookout
- 16. Concrete seating wall for minor retaining
- 17. New circulation paths providing circuits for walking, riding and scootering
- 18. New planting areas associated with existing drainage lines

- 19. New paths connecting to existing park shelters
- 20. New trees to increase existing planting along bank- improving shade provision
- 21. Area proposed for potential clubhouse extension
- 22. New paths along existing desire line
- 23. New concrete terraces and planted arbour associated with existing skate park ramp and grass bank
- 24. Potential large permeable shade structure
- 25. New trees planted between the skate park areas to increase shade and amenity
- 26. New path and drainage line combined
- 27. New concrete seating wall and associated planting
- 28. New shelter and associated BBQ
- 29. New bocce / petanque court

CONCEPT \_\_\_\_\_ looking into the park from the western frontage



CONCEPT \_\_\_\_\_ the existing skate park with improved shade and amenity



CONCEPT \_\_\_\_\_ re-working the junction bewteen the skate park and the existing playground





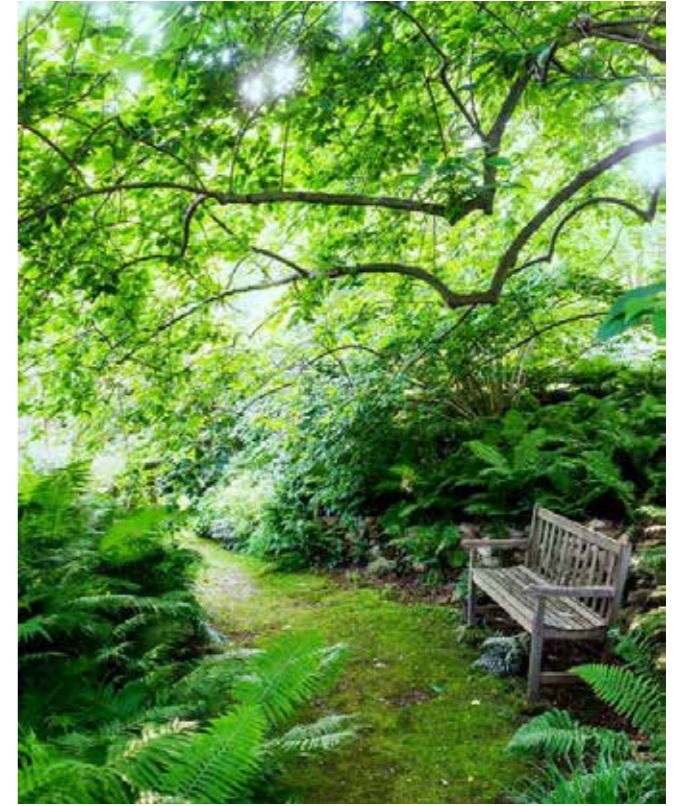
Existing community garden- combining seasonal floral and productive plantings



Example of garden gate / door- threshold points of community and natural discovery



Example of concrete seating wall- play area amenity and barrier



Finding comfortable spots for comfortable seats



Examples of drainage combining with circulation to provide park amenity



Example of combining circulation and drainage treatments





