



Project Overview

RMS Connecting Centres Kolora Way Redgate Road

December 2018

Index

1. Index	1
2. The Project	2
2.1 <i>Purpose of the project</i>	2
2.2 <i>Project Description</i>	2
2.3 <i>Location of the Project</i>	2
2.4 <i>Sustainability</i>	4
2.5 <i>Healthy, Safe, Socially engaged and well-connected communities</i>	4

The Project

2.1 Purpose of the project

The purpose of the Kolora Way Redgate Road Project is to:

- Provide a shared path to link the north ocean shore bus interchange with South Golden Beach recreational and commercial areas.
- Complete the detailed design in 2019/20 so as to proceed with construction in 2020/21

2.2 Project Description

Byron Shire Council proposes the development of the Kolora Way – Redgate Road Connection: a 350m long, 2.5m wide shared path along New Brighton Rd from Kolora Way to Redgate Road. This shared path will connect three existing cycleways on New Brighton Road, Redgate Road and Kolora Way to complete the missing link between Ocean Shores, South Golden Beach and New Brighton.

Communities have expressed a need for this connection to allow for cyclists of all ages and abilities to access between towns and to the adjacent schools safely. The proposed project was identified in Byron Shire's 2008 Bike Plan and more recently as priority works in community workshops held for the development of the 2019-29 Bike Plan (complete March 2019).

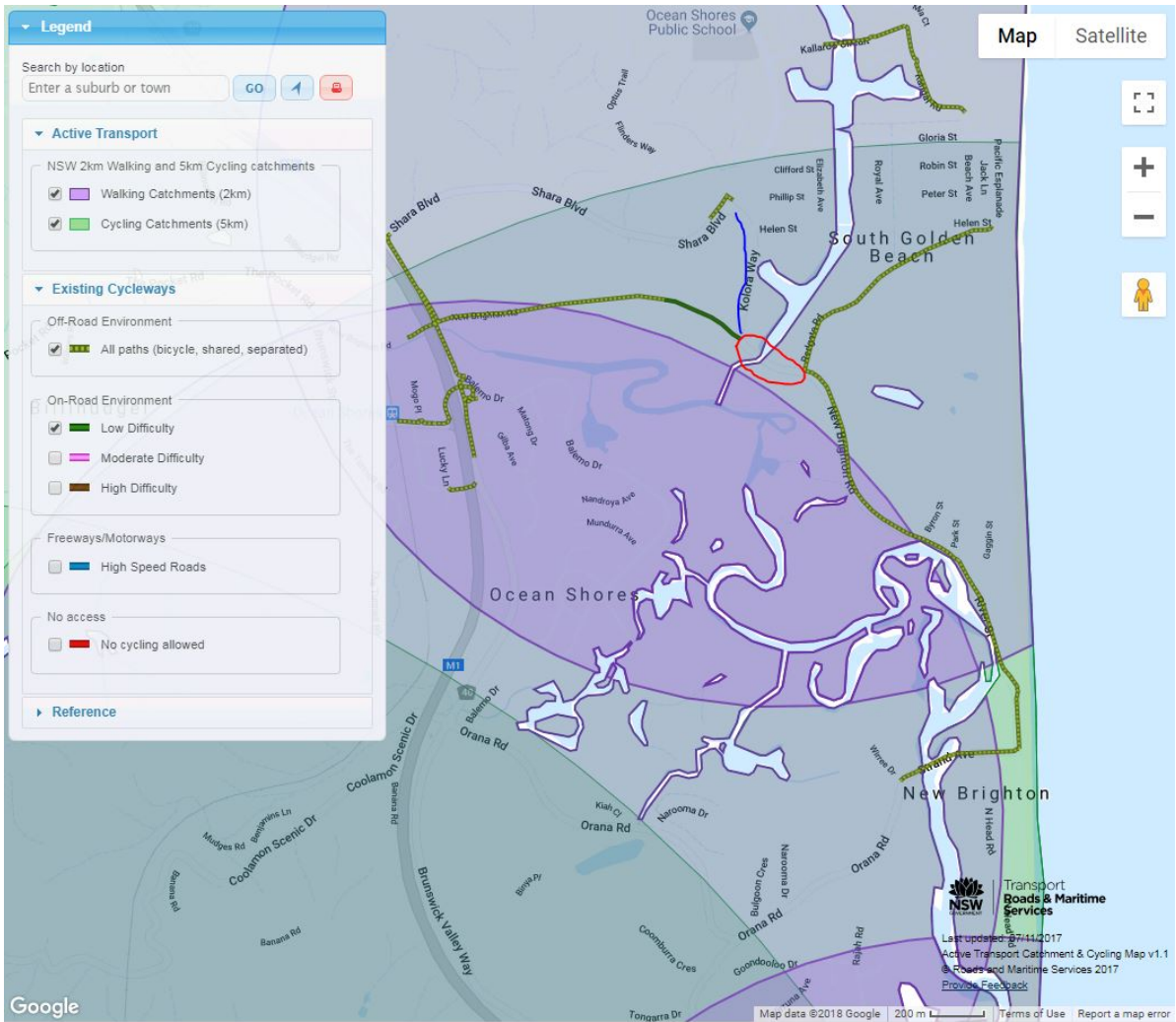
The project purpose is to link cyclists with school and work places along the route, enable safe passage for cyclists of all ages and abilities, encourage health and well being through active transport and reduce the need to rely on cars; all goals identified in Council's Community Strategic Plan and Bike Plan.

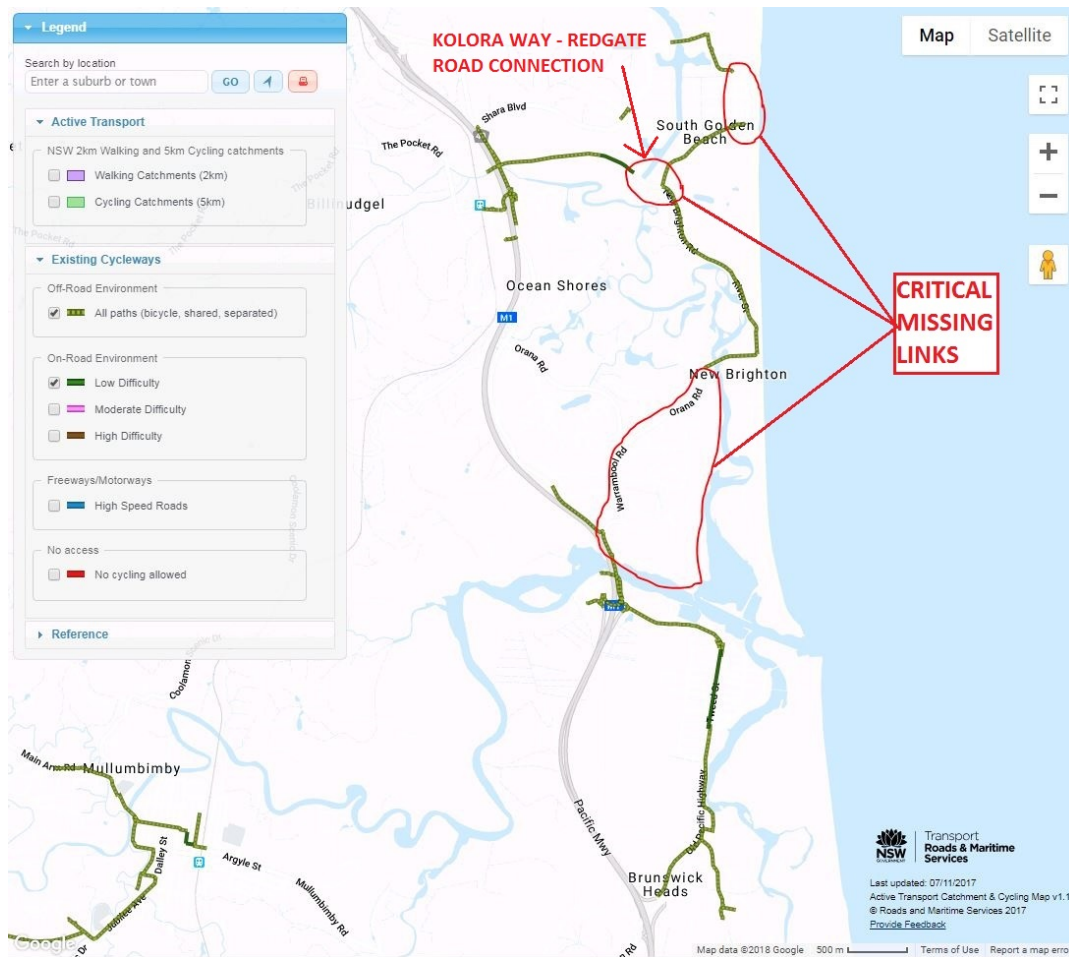
This project will contribute to a substantial increase in cycling participation by providing safe and well connected facilities that the communities along the route have expressed a need for. The project will be undertaken alongside RMS funded non-infrastructure initiatives including an annual Bike Week event and Bike Workshops to further encourage cycling as a fun and healthy transport alternative.

The current lack of cycleway is due to Yelgun Creek and the narrow traffic bridge that crosses it. The design will include an extension of the existing structure or construction of a new structure to cross the creek, which is environmentally sensitive. Council is seeking \$120,000 in RMS funding to add to \$40,000 Council funds for a project total of \$160,000 to complete detailed designs, which will be developed in collaboration with RMS in 2019/20. Construction is planned for 2020/21 and estimated at \$1,500,000.

2.3 Location of the Project

The map below shows the missing links in the cycling network within the Oceans Shores Catchments area.





2.4 Sustainability

TfNSW Future Transport Strategy 2056 states as its sustainable objectives the following: “Moving people from private vehicles to more sustainable transport modes will reduce congestion and the transport sector’s emissions intensity, improve air quality and support better health and wellbeing. Well planned centres and cities, will enable a shift from private cars to public transport and active transport modes such as walking and cycling. In Sydney, the key to this will be the delivery of three 30 minute cities, supported by reliable ‘turn up and go’ mass transit services.”

Byron Shire Council has a zero emissions target by 2030 and is dedicated to a low emissions environment and in doing this managing its climate change risks to support the Government’s Climate Change Policy Framework and its aspirational target of zero net emissions by 2050.

Byron Shire Council is aiming to build and maintain its cycling and walking infrastructure to a standard that will withstand extreme weather and sea-level rise with minimal damage and disruption to its network functionality.

2.5 Healthy, Safe, Socially engaged and well-connected communities

TfNSW in partnership with council has created a number of programs to increase opportunities for people to be more active and healthier. Byron Shire Council has engaged in significant Community consultation to meet the needs of its community with the aim of providing active transport options for its users.

The Kolora Way – Redgate Road shared path is a significant infrastructure project within the Ocean Shores catchment. It will provide a critical connection between Ocean Shores, New Brighton and

South Golden Beach, allowing users to access the myriad of major trip attractors along its length, including; 2 Schools, South Golden Beach recreational areas including the beach, playground, Community centre and shops, the Shara Boulevard Bus Interchange, multiple parks, the existing shared path to the North Ocean Shores sporting facilities and Billinudgel commercial areas.

Beyond supporting the local residents and community, this shared path will add value to the area and provide the missing link for Ocean Shores, New Brighton and South Golden Beach residents.