

Notice of Meeting

Extraordinary Local Traffic Committee Meeting

An Extraordinary Local Traffic Committee Meeting of Byron Shire Council will be held as follows:

Venue	Conference Room, Station Street, Mullumbimby
Date	Friday, 12 August 2022
Time	10.30am

Phillip Holloway
Director Infrastructure Services

I2022/1008
Distributed 05/08/22



**BYRON
SHIRE**

BYRON SHIRE COUNCIL
EXTRAORDINARY LOCAL TRAFFIC COMMITTEE MEETING

BUSINESS OF MEETING

1. APOLOGIES

2. DECLARATIONS OF INTEREST – PECUNIARY AND NON-PECUNIARY

3. ADOPTION OF MINUTES FROM PREVIOUS MEETINGS

- 3.1 Local Traffic Committee Meeting held on 14 June 2022
- 3.2 Extraordinary Local Traffic Committee Meeting held on 14 July 2022

4. MATTERS ARISING

5. OUTSTANDING ISSUES/RESOLUTIONS

6. REGULATORY MATTERS

- 6.1 Proposed Accessible Parking Bay - Jonson St, Byron Bay 3
- 6.2 Byron Writers Festival 2022 - TMP 5

7. DEVELOPMENT APPLICATIONS

- 7.1 DA10.2021.827.1 - Byron Bay Markets (Proposed Road Closures for Monthly Sunday Market) 18

REGULATORY MATTERS

Report No. 6.1 Proposed Accessible Parking Bay - Jonson St, Byron Bay

5 **File No:** I2022/916

10 This matter has been brought to Council on several occasions by a member of the Public. On investigation it was found that there is no provision for people with mobility disability on Jonson Street on the eastern side of the road, between Marvel Street and Browning Street, Byron Bay (refer to figure 1).

There is opportunity to install a single accessible angle parking bay on the corner of Jonson St and Carlyle St, as shown in figure 2 below. The proposed location is currently two hour paid parking, revenue from this parking space brings in approximately \$6,570 per year.

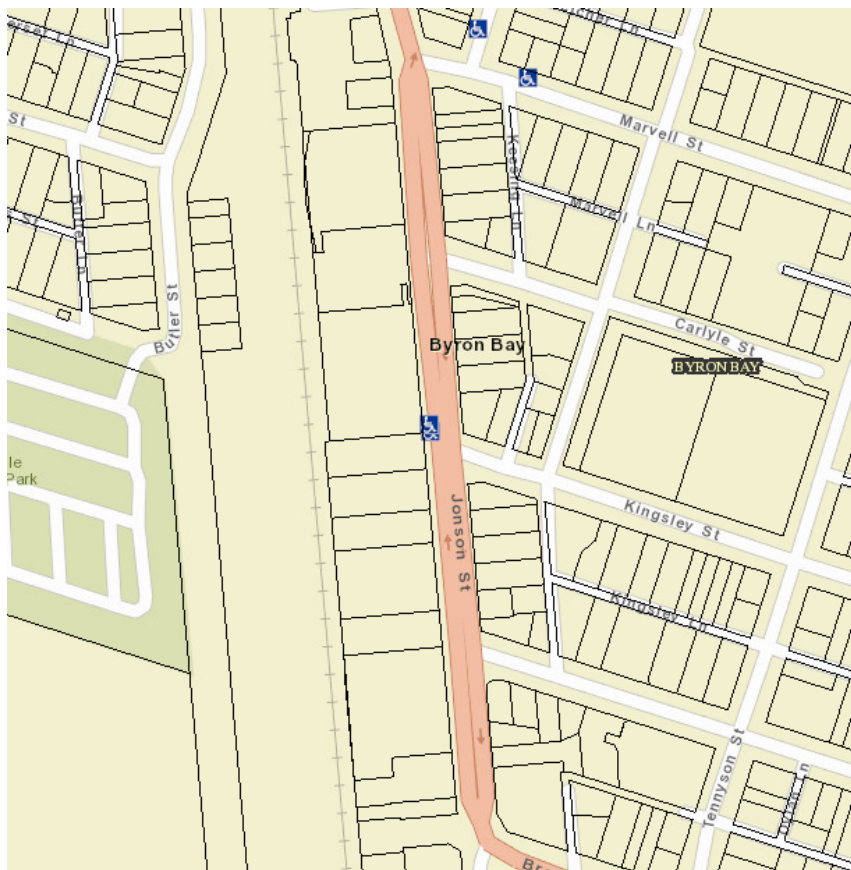


Figure 1: Accessible parking mapping focus area



Figure 2: Proposed accessible bay location (Left), Bay design concept only (right)

5 **RECOMMENDATION:**

That the Local Traffic Committee endorses the installation of an accessible parking space adjacent 103 Jonson Street, Byron Bay.

10

Report No. 6.2 Byron Writers Festival 2022 - TMP

File No: I2022/984

5

SUMMARY

A Traffic Management Plan (TMP) and associated Traffic Guidance Scheme (TGS) has been submitted to Council for the 2022 Byron Writers Festival to be held at “Elements of Byron” at 144 Bayshore Drive, Byron Bay – refer Attachment 1.

- 10 The festival dates are from Friday 26th August to Sunday 28th August 2022. The maximum number of patrons is 2,800 per day plus 200 per day for staff, volunteers & contractors, and speakers.

- 15 The festival was originally to be held at the North Byron Parklands Cultural Event Site in Yelgun this year, however due to the wet weather and condition of the grounds, the event has been moved to Elements of Byron. Local Traffic Committee considered the traffic management arrangements for the event at North Byron Parklands at its meeting of 14 June 2022.

The traffic management arrangements for the event requires reconsideration of the Local Traffic Committee and approval by Council due to its relocation to Elements of Byron.

BACKGROUND

- 20 The event site is located at the end of Bayshore Drive. The traffic to the site will be via the Bayshore Drive Roundabout on Ewingsdale Road. The last Writers Festival at this location was approved by the Local Traffic Committee in 2020. No changes have been introduced to this year's TMP and TGS. The 2020 and 2021 events were cancelled due to Covid-19.

DEVELOPMENT CONSENT

- 25 A S4.55 modification application has been lodged to amend the development consent 10.2016.251.3 to enable this year's Writersfest to operate from the Elements Site again. Development consent was previously issued to enable the site to be used for the Writersfest up to 2020. The 2020 event however was cancelled due to Covid - 19 Restrictions. The organisers had been planning for a number of months to move the event to North Byron Parklands, however
30 following this year's Splendour in the Grass Event, it became apparent that the site was not suitable nor available for the Writersfest.

- 35 At the time of writing this report (8/08/2022) the S4.55 assessment is currently under assessment having been only recently submitted. Due to time constraints and noting general sentiment from the elected Council to assist such development, the TMP and TGS is put forward for LTC consideration prior to the amendment being finalised. Condition 14A of development consent 10.2016.251.3 requires a Traffic Management Plan to be approved under S138 of the Roads Act 1993.

The condition states:

BYRON SHIRE COUNCIL

LOCAL TRAFFIC COMMITTEE MEETING

6.2

14A) Section 138 Roads Act 1993 - Traffic Management Plan

Prior to each event, consent from Council must be obtained for a Traffic Management Plan pursuant to Section 138 of the Roads Act 1993. The plans and specifications are to include the measures to be employed to control traffic during the operation of the event (including bump in and bump out phases). The traffic control plan is to be designed in accordance with the requirements of the latest version of Roads and Traffic Authority's Manual, Traffic Control at Work Sites, and the current Australian Standards, Manual of Uniform Traffic Control Devices Part 3, 'Traffic Control Devices for Works on Roads'.

The plan must incorporate measures to ensure that motorists using road adjacent to the development, residents and pedestrians in the vicinity of the development are subjected to minimal time delays due to construction on the site or adjacent to the site.

The traffic control plan must be prepared by a suitably qualified and RTA accredited Work Site Traffic Controller.

The condition is unlikely to change and the TMP has been submitted under the Roads Act in accordance with the consent condition.

IMPACTS

Pedestrian:

It is proposed to retain pedestrian traffic within the parking area as much as possible and provide a pedestrian road crossing over the existing drain opposite the site entry.

North of the car park entrance, Bayshore Drive is proposed to be a 10km/hr Shared Zone to increase pedestrian safety.

See Drawing No. J1200_TGS005 & J1200_TGS006 (pages 8 & 9 of Attachment 1) for details.

Parking:

No changes are proposed to car park entrance.

Bus drop off area is proposed at the end of Bayshore Dr within the cul-de-sac.

A dedicated taxi and Uber drop off area is proposed within the car park area located at the SE corner of the car park.

People With Disabilities (PWD) parking is proposed within the Share Zone location.

See Drawing No. J1200_TGS006 (page 9 of Attachment 1) for details.

Bayshore Drive roundabout

The TGS directs traffic exiting the site and heading for Byron Town Centre to turn left into Sunrise Blvd. This helps to reduce congestion at the Bayshore Dr Roundabout. A VMS board located at Sunrise Blvd intersection is proposed to direct this traffic.

Traffic heading west along Ewingsdale Rd from Byron Town Centre is directed to turn right at the Bayshore Dr Roundabout. As a contingency, it is recommended that if significant traffic congestion occurs at the Bayshore Drive Roundabout with east bound traffic backing up towards The Farm

BYRON SHIRE COUNCIL

LOCAL TRAFFIC COMMITTEE MEETING

6.2

and the Motorway then west bound traffic arriving from Byron Town Centre is to be directed towards the event via Sunrise Blvd. This is expected to relieve some traffic congestion at the Bayshore Drive Roundabout.

See Drawing No. J1200_TGS002 & J1200_TGS003 (pages 5 & 6 of Attachment 1) for details.

5 Speed zones

Following Council's recommendations, a 40km/h speed zone from the rail crossing to the car park entrance on Bayshore Drive, and 10km/h from the car park entry to the end of Bayshore Drive will be implemented.

10 The latter is expected to improve the pedestrian safety on Bayshore Drive in the vicinity of the pedestrian crossing. These speed zones are depicted on the attached Traffic Control Plans.

See Drawing No. J1200_TGS004 (pages 7 of Attachment 1) for details.

Traffic Guidance Scheme (TGS)

The TGS in Attachment 1 generally reflects the above comments, however the following recommendations are made:

- 15
- The TMP be amended to document, the persons who are authorised to change the TGS on the day for unforeseen circumstances.
 - Implement the TGS between Thursday to Sunday as the minimum time frame.
 - The TGS be amended to include west bound event traffic arriving from Byron Town Centre is to be directed down Sunrise Blvd, as a contingency, if east bound traffic on Ewingsdale Rd is queued back to the Hospital Roundabout.
- 20

COUNCIL IMPLICATIONS

- 25
- **Budget/Financial**
All traffic control costs are to be borne by the event organisers.
 - **Asset Management**
Not applicable.
 - **Consultation**
A condition of the endorsement of this event is that appropriate consultation is undertaken, including:
 - 1. Advertising the impact of the event in the local newspaper and on the Council website.
 - 2. Informing community and business that are directly impacted.
 - 3. Liaising with bus and taxi operators.
 - 4. Consulting with emergency services.
 - **Legal and Risk Management**
If vehicles cause congestion on Bayshore Drive, then this could directly impact a Regional Road – Ewingsdale Road. Transport for NSW Traffic Engineering Department requires separate approval of the TMP and TGS.
- 30
- 35

RECOMMENDATION:

- 40
1. That Council endorse the submitted Traffic Management Plan and Traffic Guidance Scheme for the Byron Bay Writers Festival on 26-28 August 2022.
 2. That the approval is subject to:
 - a. Separate approvals by NSW Police and Transport for NSW being obtained.
 - b. The Traffic Guidance Scheme is to operate Thursday 25th August to Sunday 28th August.



BYRON SHIRE COUNCIL

LOCAL TRAFFIC COMMITTEE MEETING

6.2

- 5
- c. The Traffic Guidance Scheme be amended to include west bound event traffic arriving from Byron Town Centre is to be directed down Sunrise Blvd, as a contingency, if east bound traffic on Ewingsdale Rd is queued back to the Hospital Roundabout.
- d. The Traffic Management Plan be amended to document, the persons who are authorised to change the TGS on the day for unforeseen circumstances.
- e. The Traffic Guidance Scheme to be implemented by those with relevant and current Transport for NSW accreditation.
- 10 3. That the event organiser must:
- i. Advertise the impact of the event via a notice in the local weekly paper a minimum of one week prior to the operational impacts taking effect. The notification must include the event name, specifics of any traffic impacts or road closures and times, alternative route arrangements, event organiser, a personal contact name and a telephone number for all event related
- 15 enquiries or complaints,
- ii. Notify the public of event details on Council's webpage. Details to be supplied to Council by the event organisers,
- iii. Undertake consultation with community and affected businesses including adequate response/action to any concerns raised,
- 20 iv. Undertake consultation with emergency services and any identified issues addressed,
- v. Hold \$20m public liability insurance cover which is valid for the event.

Attachments:

- 25
- 1 ByronWritersFestival2022_AttachmentD_Traffic Management Plan(2), E2022/74538 , page 9  

Ingen Consulting
Alstonville NSW 2477
0417 264 987
michiel@ingenconsulting.com.au
www.ingenconsulting.com.au



Our Reference: J1200_TMP2

General Manager
Byron Shire Council
PO Box 219
Mullumbimby NSW 2482

29th July 2022

Attn: Gray Blunden

Re: Byron Writers Festival 2022 – Traffic Management Plan

Dear Gray,

The Byron Writers Festival have engaged our services to prepare a Traffic Management Plan (TMP) for the Byron Writers Festival held at Bayshore Drive in Byron Bay from the 26th to the 28th of August 2022.

Pacific Motorway

Given that congestion in the southbound lane of the Pacific Motorway leading up to the Byron Bay exit is a daily occurrence, the Byron Writers Festival should not be considered the cause of this congestion on festival days. It is recognised however that the festival is a contributor of traffic on the Pacific Motorway. In recognition of this and the delays caused for festival patrons travelling to and from the festival site, festival management is in the process of implementing management techniques that improve the mode share characteristics of the festival traffic.

Speed zones

Similar to previous years, we have included a 40km/h speed zone from the rail crossing to the car park entrance on Bayshore Drive, and 10km/h from the car park entry to the end of Bayshore Drive. The latter would improve the safety of any pedestrian-vehicle interactions that may occur on Bayshore Drive. These speed zones are depicted on the attached Traffic Guidance Schemes.

Civil | Traffic | Noise | Project Management | Contract Management

Byron Writers Festival 2022
Traffic Management Plan



Pedestrian crossing

We propose to retain the pedestrian crossing (from the car park to the footpath) at the same location as last year. We have also included the 10 km/h speed zone north of the car parking entry and pedestrian fencing along the western side of the swale. We conclude that this will result in a significant increase in pedestrian safety, as the likelihood of crossing is reduced due to the fencing, and the consequence of an unwanted pedestrian-vehicle interaction is reduced due to the low vehicle speed.

Bus and taxi movement plan

Similarly to last year, a bus and taxi movement plan is included in the set of drawings. With the increased use of drop offs by services such as Uber, a suitable and efficient drop off zone is allocated within the car parking area close to the entrance. The design and placement of internal signage to facilitate the vehicle flows as indicated in the bus and taxi movement plan is not included in this TMP (which is intended to describe signage in the public road only) and will be included in the festival's internal management documentation.

Traffic management strategies

A number of traffic management strategies, outside the scope of the traffic management plan for the festival, are being assessed for suitability to include in the management of traffic at this year's festival.

These include but may not be limited to:

- A valet service for PWD patrons to allow their vehicles to be parked amongst the regular cars, thus effectively creating more PWD parking spaces
- Strategies to improve the use of buses
- Strategies to reduce the use of cars

Council will be informed of progress on these items after each strategy has been assessed for suitability and economy.

Traffic Guidance Schemes

The attached traffic guidance schemes reflect the above descriptions. If you have any questions, please do not hesitate to contact our office.

Byron Writers Festival 2022
Traffic Management Plan



Yours sincerely,

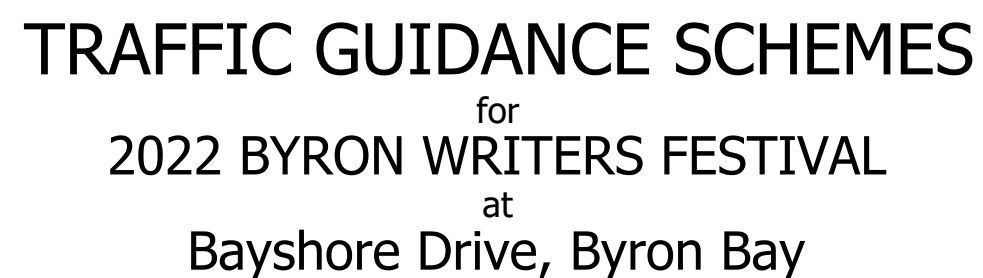
A handwritten signature in black ink, appearing to read "Jordy Nasario da Silva", written over a horizontal line.

Jordy Nasario da Silva

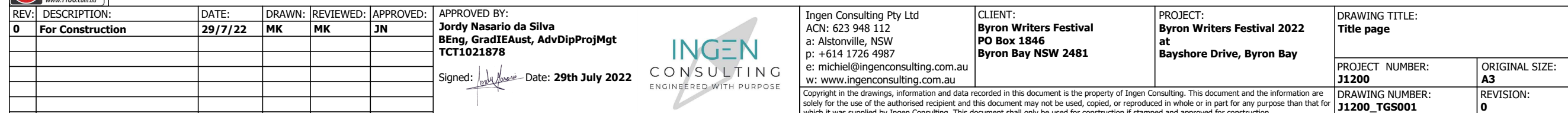
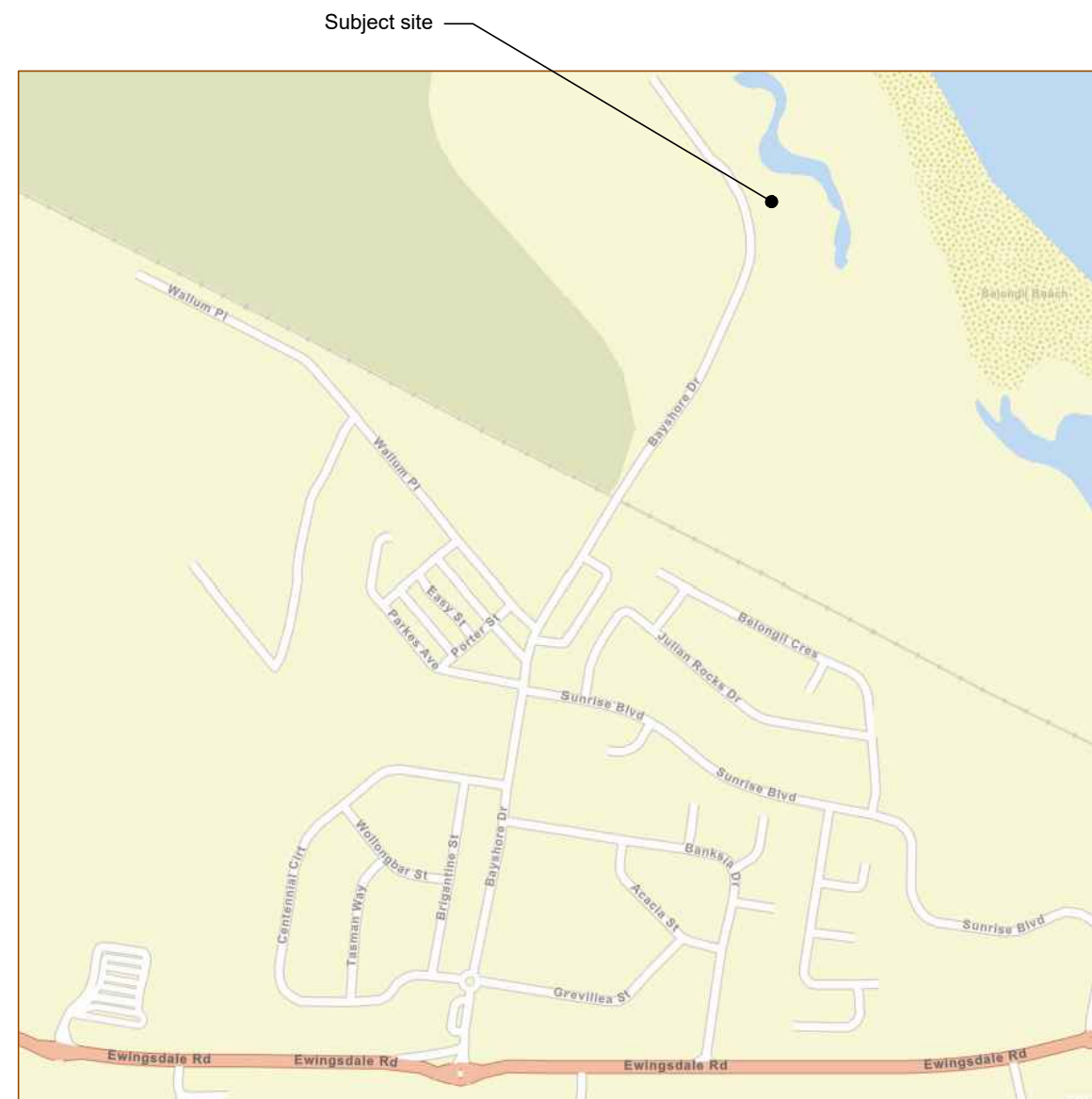
BEng, GradIEAust, AdvDipProjMgt

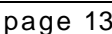
TCT 1021878

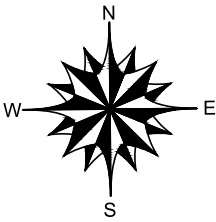
Attachments: Traffic Guidance Schemes



DRAWING TABLE		
DRAWING NUMBER	TITLE	REVISION
J1200_TGS001	Title page	0
J1200_TGS002	Ewingsdale Road directional signage	0
J1200_TGS003	Departure directional dignage	0
J1200_TGS004	Bayshore Drive	0
J1200_TGS005	Details	0
J1200_TGS006	Bus and taxi movement plan	0









- TGS NOTES:**
1. This Traffic Guidance Scheme (TGS) is to be read in conjunction with the associated Traffic Management Plan.
 2. This TGS is only valid for the duration of the 2022 Byron Writers Festival
 3. This TGS is only to be implemented by adequately experienced and certified personnel.
 4. Installation of signs, barriers and other traffic control devices shall be in accordance with the AS1742 series and the TfNSW Traffic Control at Work Sites version 6.0.
 5. Signage is based on TfNSW standard TGS's, but sign spacing has been amended to suit local conditions and reduce complexity for users.
 6. Traffic controllers to be TfNSW-accredited and wearing suitable high-visibility clothing.
 7. Pedestrian marshals to be suitably experienced and to wear high-visibility vest.
 8. Where dimensions are not shown, sign locations to correspond to locations shown on aerial imagery.

LEGEND:

 VMS board location

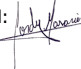
 VMS display content



REV:	DESCRIPTION:	DATE:	DRAWN:	REVIEWED:	APPROVED:
0	For Construction	29/7/22	MK	MK	JN

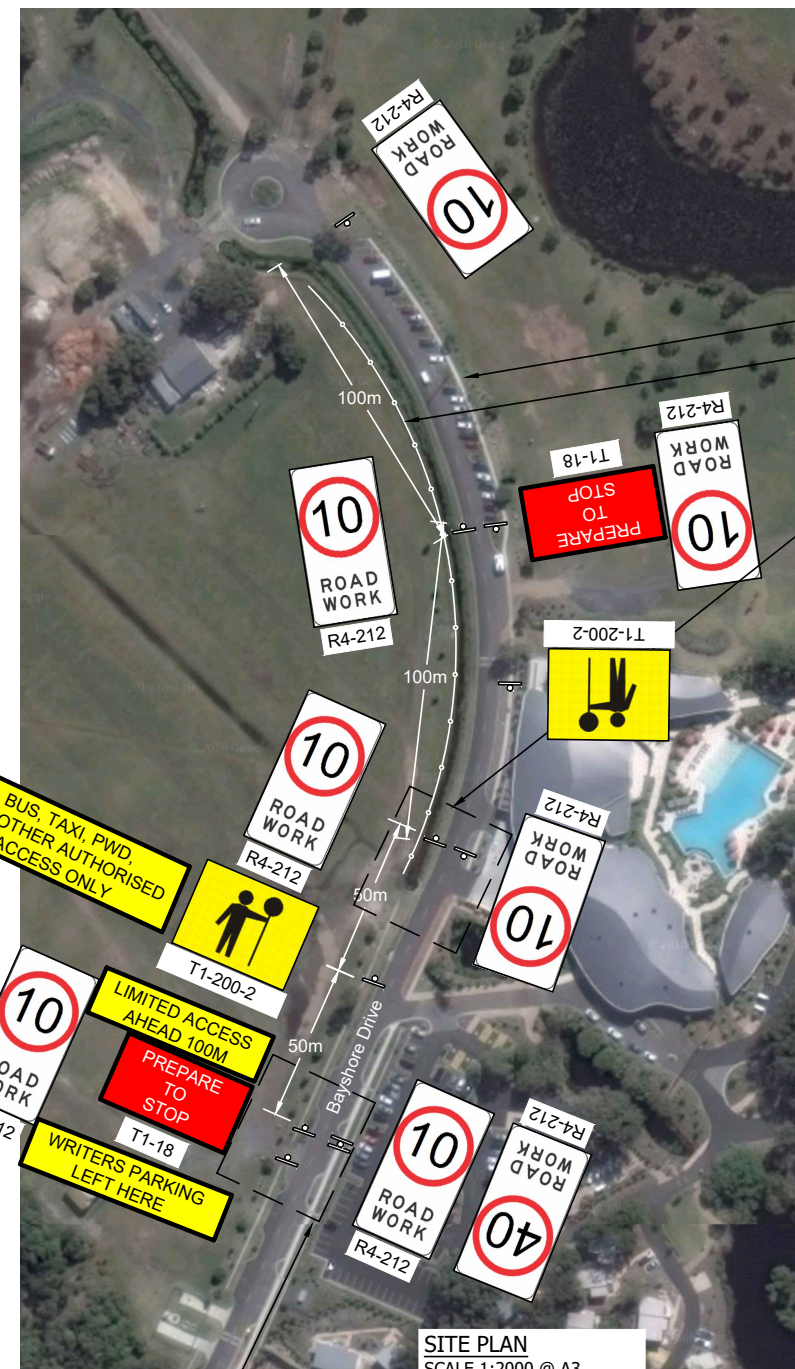
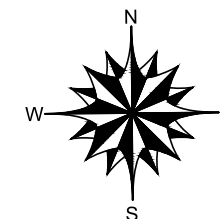
SCALE 1:5000 @ A3
Aerial imagery: NSW Planning Portal

APPROVED BY:
Jordy Nasario da Silva
BEng, GradIEAust, AdvDipProjMgt
TCT1021878

Signed:  Date: **29th July 2022**







Ingen Consulting Pty Ltd ACN: 623 948 112 a: Alstonville, NSW p: +614 1726 4987 e: michiel@ingenconsulting.com.au w: www.ingenconsulting.com.au	CLIENT: Byron Writers Festival PO Box 1846 Byron Bay NSW 2481	PROJECT: Byron Writers Festival 2022 at Bayshore Drive, Byron Bay	DRAWING TITLE: Departure directional signage		
	Copyright in the drawings, information and data recorded in this document is the property of Ingen Consulting. This document and the information are solely for the use of the authorised recipient and this document may not be used, copied, or reproduced in whole or in part for any purpose than that for which it was supplied by Ingen Consulting. This document shall only be used for construction if stamped and approved for construction.			PROJECT NUMBER: J1200	ORIGINAL SIZE: A3
				DRAWING NUMBER: J1200_TGS003	REVISION: 0



TGS NOTES:

1. This Traffic Guidance Scheme (TGS) is to be read in conjunction with the associated Traffic Management Plan.
2. This TGS is only valid for the duration of the 2022 Byron Writers Festival
3. This TGS is only to be implemented by adequately experienced and certified personnel.
4. Installation of signs, barriers and other traffic control devices shall be in accordance with the AS1742 series and the TfNSW Traffic Control at Work Sites version 6.0.
5. Signage is based on TfNSW standard TGS's, but sign spacing has been amended to suit local conditions and reduce complexity for users.
6. Traffic controllers to be TfNSW-accredited and wearing suitable high-visibility clothing.
7. Pedestrian marshals to be suitably experienced and to wear high-visibility vest.
8. Where dimensions are not shown, sign locations to correspond to locations shown on aerial imagery.

LEGEND:

	VMS board location
	VMS display content
	Directional sign
	Sign location



**DIAL BEFORE
YOU DIG**
www.1100.com.au

REV:	DESCRIPTION:	DATE:	DRAWN:	REVIEWED:	APPROVED:
0	For Construction	29/7/22	MK	MK	JN

APPROVED BY:
Jordy Nasario da Silva
BEng, GradIEAust, AdvDipProjMgt
TCT1021878

Signed: [Signature] Date: **29th July 2022**



Ingen Consulting Pty Ltd
ACN: 623 948 112
a: Alstonville, NSW
p: +614 1726 4987
e: michi@ingenconsulting.com.au
w: www.ingenconsulting.com.au

Copyright in the drawings, information and data recorded in this document is the property of Ingen Consulting. This document and the information are solely for the use of the authorised recipient and this document may not be used, copied, or reproduced in whole or in part for any purpose than that for which it was supplied by Ingen Consulting. This document shall only be used for construction if stamped and approved for construction.

CLIENT:
Byron Writers Festival
PO Box 1846
Byron Bay NSW 2481

PROJECT:
Byron Writers Festival 2022
at
Bayshore Drive, Byron Bay

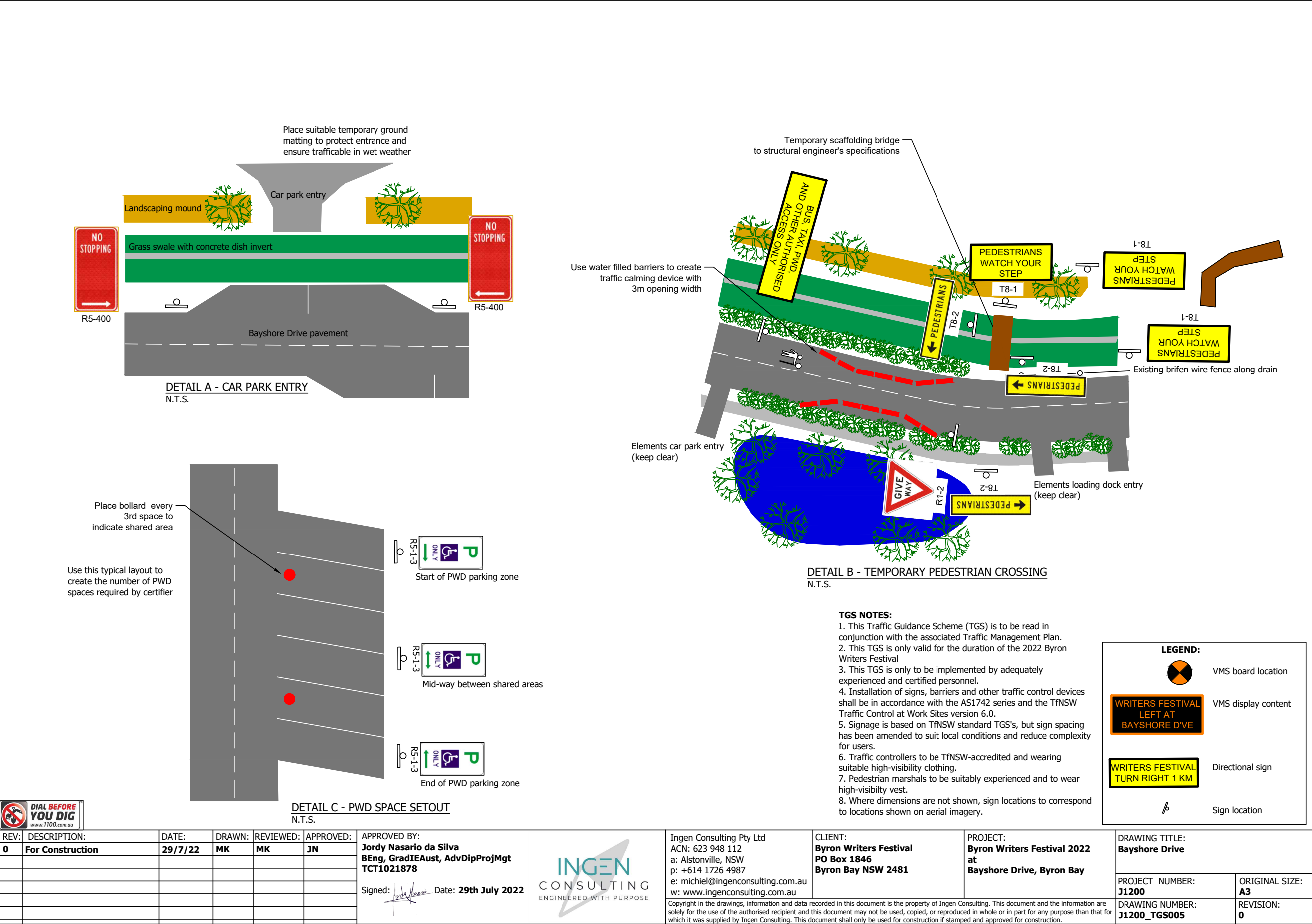
DRAWING TITLE:
Bayshore Drive

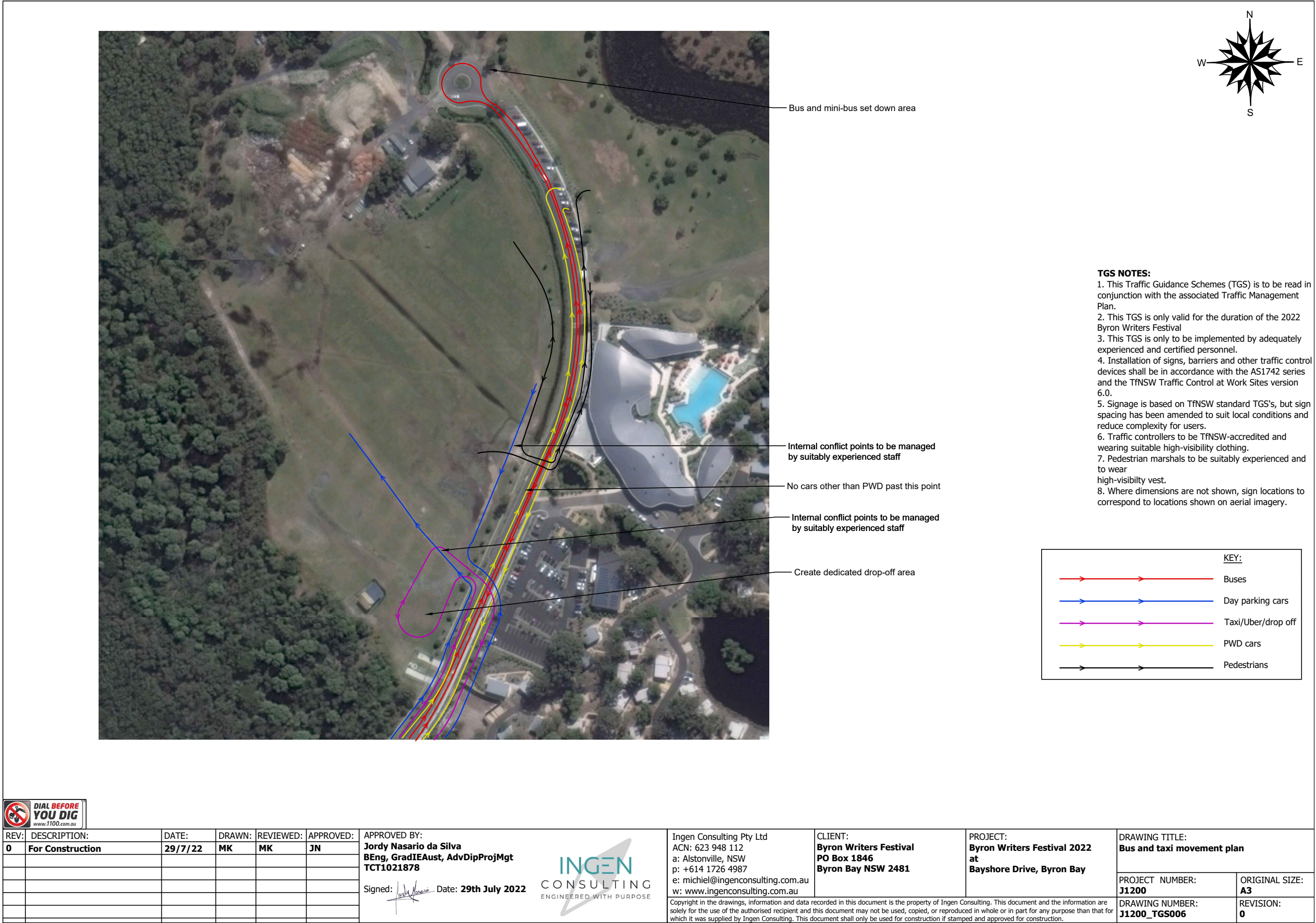
PROJECT NUMBER:
J1200

DRAWING NUMBER:
J1200_TGS004

ORIGINAL SIZE:
A3

REVISION:	
0	





DEVELOPMENT APPLICATIONS

**Report No. 7.1 DA10.2021.827.1 - Byron Bay Markets
(Proposed Road Closures for Monthly
Sunday Market)**

File No: I2022/1020

SUMMARY

This report seeks approval for the temporary road closure of Jonson St next to Railway Park, between Marvell and Byron Streets for Byron Community Market held once and month and fortnightly in December and January.

Development application (DA) 10.2021.827.1 seeks approval to relocate the Byron Community Market from Main Beach foreshore to within the railway corridor, Railway Park, and Jonson Street Road Reserve, Byron Bay.

The proposal includes a temporary road closure of Jonson St next to Railway Park, between Marvell and Byron Streets, to vehicles on monthly market days and the use of the western section of the Butler Street Reserve for stall holder parking.

The markets will operate between 8am and 3pm, with bump-in and bump-out movements occurring before and after this time. The market holds up to 300 stalls, associated market management and facilities.

A review of the supporting documentations of the DA concludes that the relocation of the Market and the temporary road closure of Jonson St next to Railway Park, between Marvell and Byron Streets will produce minor impact to Traffic and Parking in the surrounds.

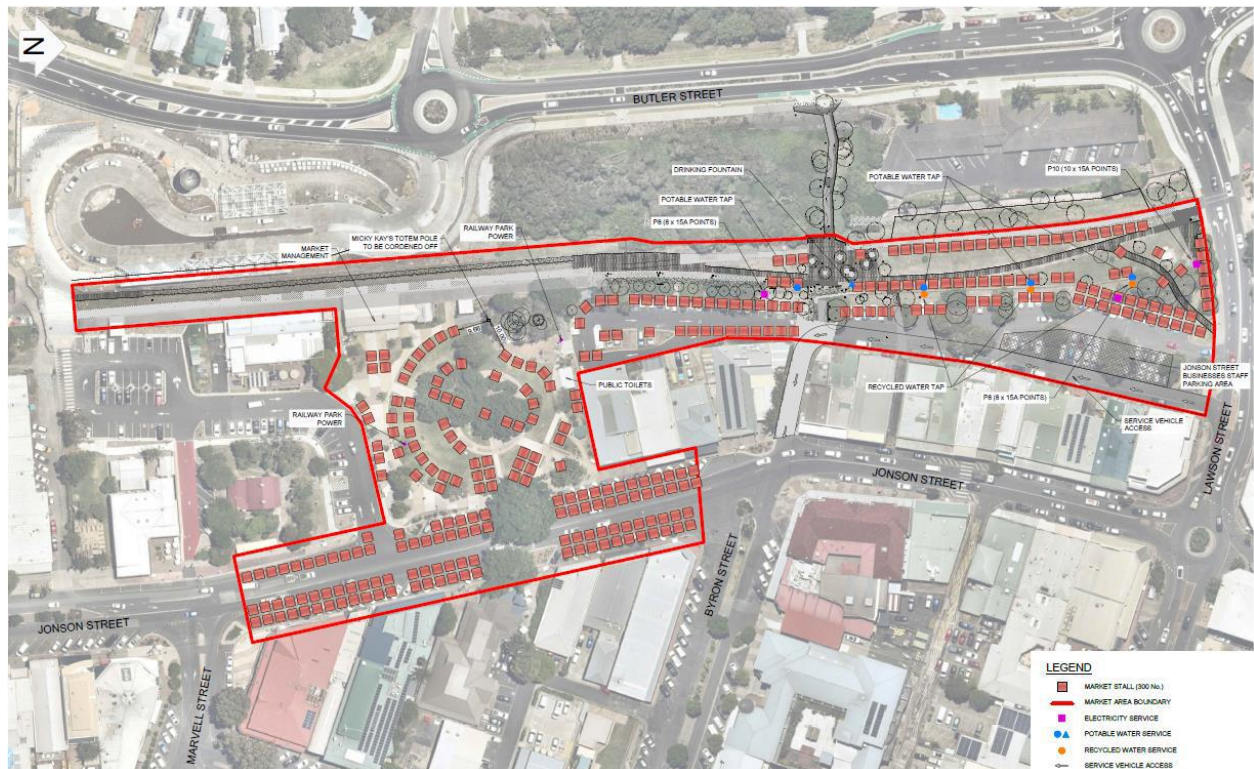
OFFICER RECOMMENDATION

That Council approves the temporary road closure of Jonson St next to Railway Park, between Marvell and Byron Streets between 5am and 5pm.

BACKGROUND

Byron markets are currently held on the 1st Sunday of every month, using the Denning Park Reserve as a temporary location. The markets are also held every 3rd Sunday from December through January. During the temporary relocation, the market reduced in size to a maximum of 290 stalls.

The development application seeks to increase in size to 300 stalls upon relocation to the Railway Precinct. The markets operate between 8am and 3pm, with bump-in and bump-out movements occurring before and after this time.



Site Plan

Parking

- 5 The proposal requires 750 parking spaces to cater for 300 market stalls based on Council's DCP 2014 parking rates at 1 parking space per 2.5 stalls.

The existing market is located in Denning Park Reserve and utilises the existing road and parking infrastructures in the surrounds.

The new site is located approximately 400m southwest of the existing site and proposes to utilise the existing parking infrastructures in the surrounds.

- 10 A parking survey was conducted by Planit Consulting to verify the availability and utilisation of parking within the surrounds during a Market Sunday and a non-Market Sunday to offset parking requirement of the DA. The peak period surveyed ranged from 8:00-11:00am to all carparks within 800m radius. See table 1 and table 2 for the tabulated results of the survey.

BYRON SHIRE COUNCIL

LOCAL TRAFFIC COMMITTEE MEETING

7.1

Location	Byron Bay, NSW, 2481	Date	5/06/2022	Weather	Sunny Day
		Occupied Carparks			
Carpark Location	Existing Car Spaces	8:00am	9:00am	10:00am	11:00am
Main beach Carpark	85	44	64	80	82
Lawson Street (North-Carpark)	116	21	44	67	92
Byron Street Carpark	48	28	35	35	41
Middleton Carpark	44	38	43	44	44
Railway Carpark	50	18	17	22	35
Bay-Street	86	77	78	84	81
Lawson Street	166	97	59	31	26
Fletcher Street	84	43	43	43	43
Jonson Street	142	65	59	95	112
Somerset Street	58	26	19	31	28
Shirley Street	80	48	48	48	48
Wordsworth & Burns Street	30	4	8	9	8
Lawson Street (South-Carpark)	100	18	22	47	65
Subtotal	1089	527	539	636	705

Table 1 - Market Sunday

Location	Byron Bay, NSW, 2481	Date	19/06/2022	Weather	Cloudy Day
		Occupied Carparks			
Carpark Location	Existing Car Spaces	8:00am	9:00am	10:00am	11:00am
Main beach Carpark	85	40	44	50	70
Lawson Street (North-Carpark)	116	80	77	65	47
Byron Street Carpark	48	22	28	23	33
Middleton Carpark	44	23	25	26	35
Railway Carpark	50	12	15	26	33
Bay-Street	86	81	83	77	80
Lawson Street	166	68	66	75	82
Fletcher Street	84	45	68	71	79
Jonson Street	142	75	82	96	90
Somerset Street	58	18	19	24	30
Shirley Street	80	25	21	24	26
Wordsworth & Burns Street	30	6	7	9	12
Lawson Street (South-Carpark)	100	16	25	34	49
Subtotal	1089	511	560	600	666

Table 2 – non-Market Sunday

- 5 The survey results in Table 1 and Table 2 found that there is less than a 10% fluctuation in parking demand between market Sunday and non-market Sunday and the total parking spaces available were not all utilised, rather the typical demand for parking was approximately 60%, leaving availability of approximately 40%, which is sufficient for day-to-day operation of a CBD as an occupancy of approximately 85% or below is ideal.
- 10 The car parking locations in the survey were assessed to verify practicality for market patrons to walk between the parking areas and the Market. The assessment found that Lawson St carpark with 166 parking spaces is approximately 1 km away, Lawson St (South Carpark) with 100 spaces is utilised by market stalls and the Jonson St parking with 142 spaces only have 50% parking spaces available as 50% is utilised by market stalls.
- 15 These parking areas were discounted with a total reduction of 337 spaces.

The revised available parking in the surrounds is 752 spaces. This equates to 380 spaces utilised at 8AM, 429 spaces at 9am, 511 spaces at 10AM and 558 spaces at 11AM.

The revised parking supply complies with the parking supply requirement in Council's DCP.

Traffic

- 5 The parking demand is directly proportional to the traffic generated by the Markets. The recorded parking utilization increase between a Market and non-market Sunday is 10% and the current parking demand is lesser than the available parking spaces. The traffic generated by the Markets generates will generally merge into the existing traffic stream with minimal impact to the surrounding road infrastructure network.

10

Traffic Management Plan

The traffic management plan plays an integral part of the proposal to manage pedestrian & vehicular traffic and market operations.

- 15 The following recommendations are proposed:
- The provision of additional entries to the markets is advised. The more entry points, the less congestion at a single entry point
 - Waiting bays are advised close to the markets to be used for overflow vehicles and for those ready to enter the site but without a parking space
 - 20 • Stall holders should load in at different times. Staggering the stall holder arrivals reduces congestion
 - Stall holders should park off-site where possible, with allocated parking for the stall holders to be made available nearby such as at the western end of Butler Street Reserve.
 - 25 • During peak times of the market, traffic should be directed to take a longer route to access the site, resulting in less congestion closer to the site

In addition to the above, it is proposed to prepare a pedestrian access management plan (PAMP) specific to the proposed market site. The PAMP is to be supported with Guidance Scheme designed in accordance with Transport for New South Wales

30

Development Application Conditions

- 35 A Traffic Management Plan (TMP) and associated Traffic Guidance Scheme (TGS) in accordance with the requirements of the current version of the Transport for NSW *Traffic Control at Work Sites Technical Manual* for traffic control for the temporary road closure and PAMP will be conditions recommended for the development consent for approval pursuant to Section 138 of the Roads Act 1993 prior to each event. Attachment 1 (E2021/149504) is a copy of a TGS for the road closure. The TMP will be reported back to the LTC once lodged.

BYRON SHIRE COUNCIL

LOCAL TRAFFIC COMMITTEE MEETING

7.1

LTC Advice Required

The LTC is requested to provide comment on whether the TMP & TGS required as conditions of development consent must be submitted to LTC prior to each event for endorsement.

5

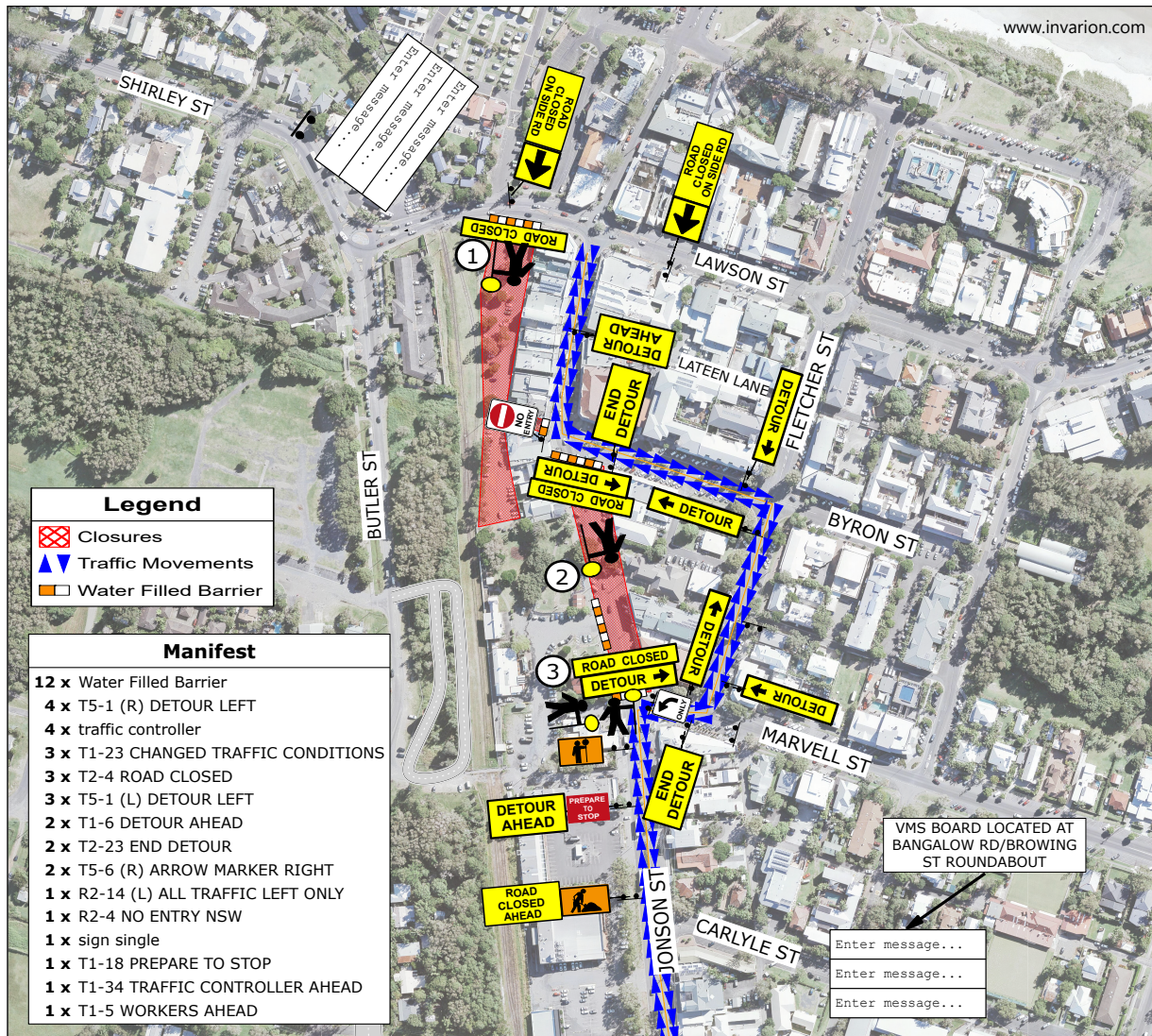
RECOMMENDATION:

That Council approves the temporary road closure of Jonson St next to Railway Park (between Marvell and Byron Streets), to facilitate Byron Community Market on Sundays between 5am and 5pm, monthly, except between December and January which will be fortnightly

10

Attachments:

15 1 Attachment 1 - TGS, E2021/149504 , page 23 [↓](#) 



Date: 28/10/21 **Author:** John Leeming **Project:** Byron Community Markets

Comments:

SHORT TERM WORK
MONTHLY COMMUNITY MARKETS ON SUNDAY
Based on Australian Standards 1742.3
All signage and traffic control devices to be set up in accordance with Australian Standards 1742.3
1. Traffic controller to provide access for bakery deliveries and stall holders
2. Traffic controller required for breaks
3. Traffic control to one lane through one way road

Spinifex

Designed & Inspected by John Leeming.....TCT0035936
RMS Prepare A Work Zone Traffic Management Plan

Checked by Scott Pieniacki.....0052190175 Exp 18/10/2022
RMS Prepare A Work Zone Traffic Management Plan