



Lilli Pilli Photo Monitoring

11 Tristran Parade, Mullumbimby Creek NSW 2482

Jane: 0404 050 361 Jo: 0458 127 107 Alison 0422 994 338 Greg: 0411 844 415

www.earthscapes.com.au

ABN: 58631637600

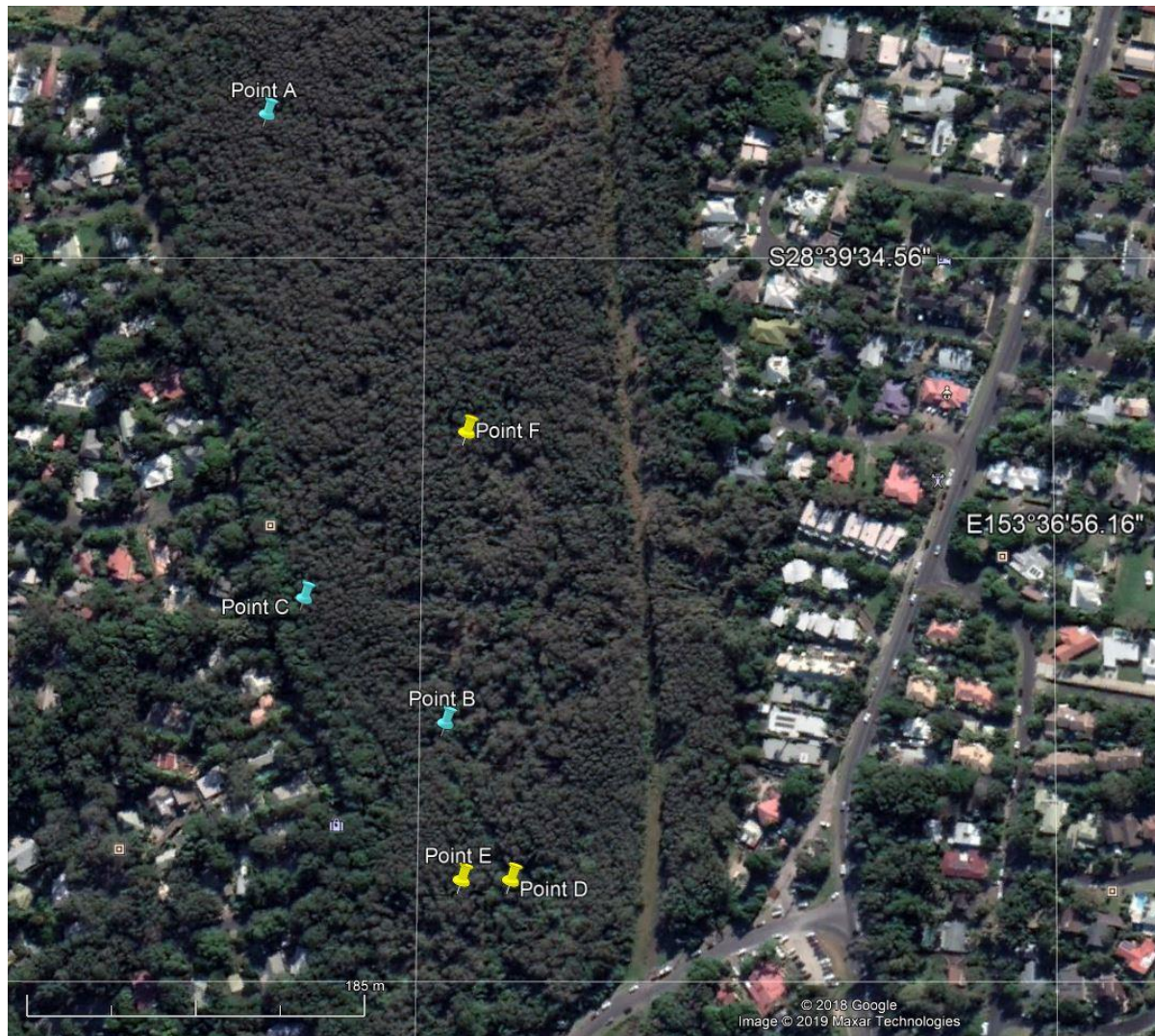


Figure 1: The site, with the six monitoring points identified.

Locations of photo points					
Projected coordinate system: GDA94					
Photo point reference	Easting	Northing	Latitude	Longitude	Direction of photo (magnetic degrees)
A	559711	6829647	-28° 39' 32"	153° 36' 40"	East (90)
B	559814	6829307	-28° 39' 43"	153° 36' 44"	East (90)
C	559735	6829376	-28° 39' 41"	153° 36' 41"	South (180)
D	559851	6829221	-28° 39' 46"	153° 36' 45"	North (360)
E	559824	6829221	-28° 39' 46"	153° 36' 44"	South (180)
F	559825	6829468	-28° 39' 38"	153° 36' 44"	South (180)

Baseline monitoring

26-09-2019

Point A

Time	Conditions	Ground cover (%)	Notes
1.38pm	Light cloud	60 – 80%	<i>Melaleuca quinquenervia</i> dominant canopy, minimal weed infestations, sodden ground, even after prolonged dry period.



Figure 2: Point A 260919

Point B

Time	Conditions	Ground cover (%)	Notes
1.01pm	Light cloud	80%	Adjacent a watercourse, with vine growth and sunlight penetration. Water colour is very opaque orange, possibly due to acid sulphate. Recommend water testing. Two scats near point B, most likely from a cat. Additional photos can be provided.



Figure 3: Point B 260919

Point C

Time	Conditions	Ground cover (%)	Notes
1.17pm	Light cloud	20%	This monitoring point is nearest road verge. There was rubbish present, with some weed infestations. Both rubbish and weeds should will be able to be removed by hand.



Figure 4: Point C 260919

Point D

Time	Conditions	Ground cover (%)	Notes
1.54pm	Light cloud	60 - 70%	Many weed species present, including Cassia (<i>Senna pendula</i> var. <i>glabrata</i>) and night scented jasmine (<i>Cestrum nocturnum</i>), with a more open canopy than the other monitoring points. Large amounts of litter present.



Figure 5: Point D 260919

Point E

Time	Conditions	Ground cover (%)	Notes
9.41am	Light cloud	70 - 80%	The photo point E captures one of a number of open water sections toward the southern end of the site dominated by <i>Sagittaria</i> (<i>Sagittaria platyphylla</i>), an aquatic weed in NSW with aggressive growth and rapid spread - https://weeds.dpi.nsw.gov.au/Weeds/Sagittaria .



Figure 6: Point E 221019

Point F

Time	Conditions	Ground cover (%)	Notes
9.12am	Light cloud	60 -70%	The photo point F represents many of the permanent water sections through the middle of the site, with Salvinia (<i>Salvinia molesta</i>) becoming established. Salvinia is classed as a weed of National Significance in Australia, and is regarded as a “serious threat to waterways...” https://weeds.dpi.nsw.gov.au/Weeds/Details/118 .



Figure 7: Point F 221019