

Preferred Locations for Car Share Bays – Prior to Neighbourhood Engagement.

-neighbours of these locations have been consultant.

1. Lawson Street South (3), Operational Land. Two locations would be used here for the pilot, a third would be saved for future potential expansion of the car share scheme.



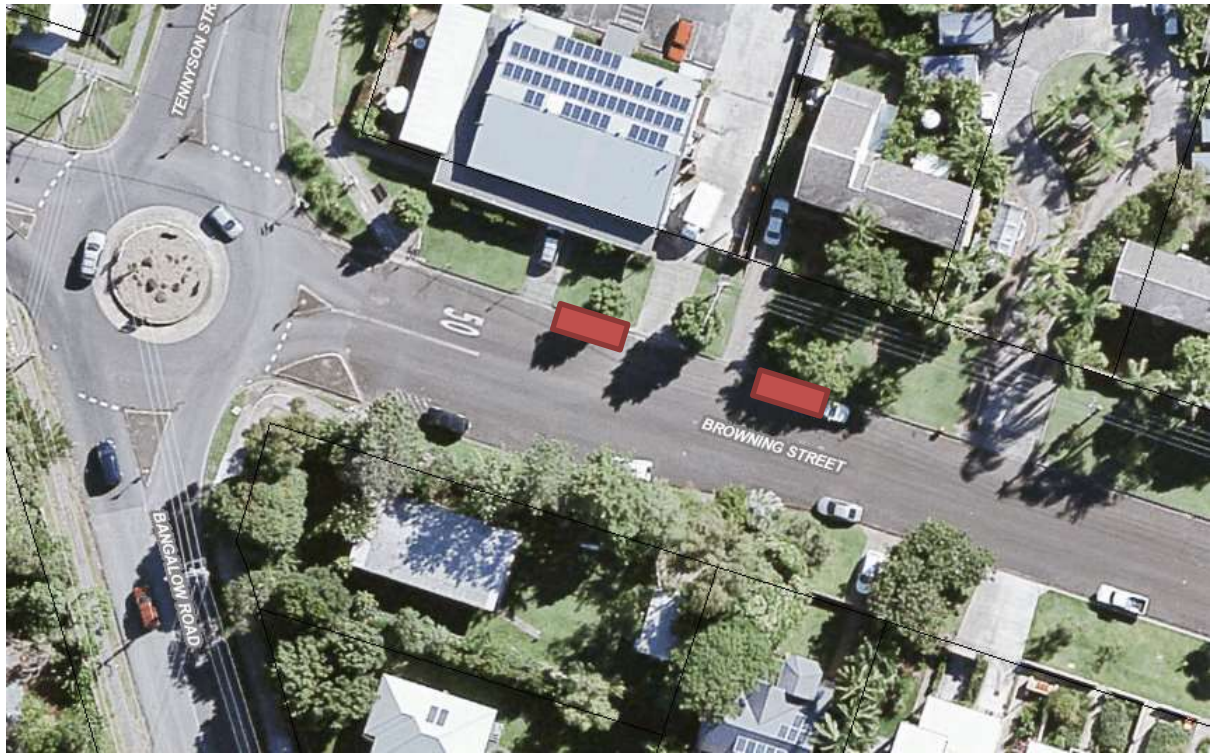
2. Marvell Street (2)



3. Massinger Street (2)



4. Browning Street (2) – dependent on new tenant of corner block



5. Station St Mullumbimby (4), Operational Land.

Two locations would be used here for the pilot, a third would be saved for future potential expansion of the car share scheme.



6. Shirley Street West (3)

Two locations would be used here for the pilot, a third would be saved for future potential expansion of the car share scheme.



Alternative Locations

1. First Sun Caravan Park Entrance (2), Operational Land.



2. Library (2), Operational Land.



3. Marvell Street (2)

Residential neighbour would prefer the cars to be located closer to the commercial area of Marvell Street.



4. Marvell Street East of the Recreational Grounds

Residents around Massinger Street believe outside the topshop on Massinger Street is too congested.



5. Marvell Street East of the Recreational Grounds, grassed area could be formalised
Residents around Massinger Street believe outside the Topshop on Massinger Street is too congested.



6. Carlyle Street outside the Recreational Grounds and Tennis Court could be formalised
Residents around Massinger Street believe outside the Topshop on Massinger Street is too congested.

