



BYRON SHIRE COUNCIL
DOC NO:
RECD: - 8 OCT 2018
FILE NO: F1668/07
ASSIGNEE: S. Tucker

BLUESFEST 2019 TRAFFIC MANAGEMENT PLAN

For
Bluesfest Services Pty Ltd

RECEIVED BY FRONT COUNTER
8 OCT 2018
BYRON SHIRE COUNCIL

Bluesfest 2019 Traffic Management Plan

For
Bluesfest Services Pty Ltd

DOCUMENT CONTROL SHEET

Document title: Bluesfest 2019 Traffic Management Plan

Document reference: Traffic Management Plan

Revision: Plan updated for 2019 event

Client: Bluesfest Services

Client contact: Peter Noble

Original Authors: Michiel Kamphorst,
MEng, RPEng (Civil), RPEQ 15790
RMS SM 7332054367
RMS DI 06015 (cert no)

REVISION NUMBER	DATE OF ISSUE	AUTHOR		REVIEWED BY		APPROVED BY	
1	23/02/2016	GA	23/02/2016	BM	05/12/2017	PN	05/12/2017
2	24/8/2018	HK	24/8/2018	BM	03/09/2018	PN	03/09/2018

Table of Contents

1.0 INTRODUCTION	5
2.0 TRAFFIC CONTROL AT TYAGARAH INTERCHANGE AND NEW BLUESFEST SOUTH BOUND OFF RAMP	6
2.1 Main purpose	6
2.2 General layout	6
2.3 Traffic controllers on the off ramps	8
2.4 Traffic Controllers	8
2.5 Traffic Control Plans	8
2.6 Traffic Control Implementation	8
3.0 TRAFFIC CONTROL AT SITE GATES	9
3.1 Main purpose	9
3.2 Campers arrival	10
3.3 Day patrons arrival	10
3.4 Buses	10
3.5 Departure	10
4.0 ON SITE TRAFFIC CONTROL	11
4.1 Main purpose	11
4.2 Car parks	11
4.3 North-South Internal Road	11
4.4 Bus and taxi ranks	11
4.5 Role Of On-site Supervising Engineer	12
5.0 MONITORING	12
6.0 PAID PARKING	12
7.0 RECOMMENDATIONS FROM 2017 TRAFFIC EVALUATION REPORT	13
8.0 CONTACT DETAILS	16
9.0 COMMAND STRUCTURE	17

1.0 INTRODUCTION

The purpose of this Traffic Management Plan (TMP) is to summarize the traffic management procedures specified in the Traffic Control Plans and Traffic Monitoring Program for the Bluesfest 2019 event.

All traffic controllers are to be Roads and Maritime Services (RMS) certified controllers with two-way radio. Traffic controllers are not to verbally communicate with drivers of vehicles other than to move them through quickly. Any traffic controllers found causing delays by having conversations with drivers are to be replaced immediately after reasonable warning.

It is important to realise that this 2019 Bluesfest at Tyagarah will need to comply with key performance indicators as defined under the current development approval. These levels must not be breached and the traffic controls and parking marshals are the key components in achieving these performance levels. It is therefore paramount that the traffic is operated smoothly and safely within the constraints set by the State Government and Byron Shire Council. These constraints are called key performance indicators, (KPI) and are summarized as follows:

- Worst case Level of Service(LOS) on adjoining local roads: LOS D between 8am and 8pm event days, measured as follows:
 - Traffic flow on adjoining local roads not to exceed 800 vehicles per hour per lane where 40 km/h special speed limits apply;
 - Traffic flow on adjoining local roads not to exceed 1260 vehicles per hour per lane where 60 km/h special event limits apply;
- Worst case level of service on Gulgan Interchange: LOS C
- Maximum queue length northbound off ramp (measured from give way line): 215m;
- Maximum queue length existing southbound off ramp (measured from stop line): 248m;
- Maximum queue length new southbound off ramp (measured from end of off ramp): 162m;

Any traffic incidents resulting in non-compliance with any of the above conditions will have serious consequences for future events at this site. It is important that at all times, sufficient qualified staff is available to implement the traffic management plan including any contingencies. It is required that all traffic controllers are properly briefed giving them an appreciation of the bigger picture of the traffic management plan and an understanding of the impact that their specific role may have on the overall performance of the festival.

Of equal importance in the compliance with the above specifications is that there are no restrictions within the site which cause a queue of traffic back out the entrance gates onto Tanner Lane or Yarun Road.

The traffic control supervisor and parking supervisor are to liaise closely with each other before and during the festival. The supervising traffic engineer will also liaise with these two supervisors and other parties, such as RMS, Council, Bluesfest Management, NSW Police Force and the public both within and outside the site to ensure efficient operation overall. The operation of the traffic management is a team effort and regular coordination meetings will be held with all relevant stakeholder personnel.

2.0 TRAFFIC CONTROL AT TYAGARAH INTERCHANGE AND NEW BLUESFEST SOUTH BOUND OFF RAMP

2.1 - Main purpose

The main priorities of the traffic control measures at the Tyagarah Interchange are:

- No queuing onto the Pacific Highway Off-ramps;
- No interruption of through traffic on the Pacific Highway;
- Limit delay for local traffic on local roads

The traffic control plans (TCPs) detailing the required traffic control measures are prepared by Workforce Road Services and adopted by Council. These plans form the statutory controls for traffic management on the public roads adjacent to the event site and along with the Road Occupancy Licence issued by the RMS serve to give the necessary authority to the Traffic Controllers to implement traffic management on and off the site. A set of approved traffic control plans will be issued to all stakeholders.

2.2 - General layout

The traffic control plans show signage, barriers and other traffic control measures to offer a managed environment around the Bluesfest site.

Southbound motorway traffic seeking to attend the festival will be directed by signage to take the off ramp, completed by Bluesfest, and proceed directly without interruption to their parking areas, situated in the north of the tea tree Farm site.

Event traffic from the south will be directed by signage to exit the Pacific Highway at the existing Mullumbimby off-ramp. This traffic will cross the motorway using the existing Tyagarah interchange overpass. Then they travel south to the site entrance gate and park in the southern car parking areas. Event traffic from the north will use the newly constructed off ramp which will lead them straight into the site to park in the northern car parks.

Thus vehicles from either direction will be kept separate to reduce on-site congestion during both arrival and departure times.

The Grays Lane intersection with the Pacific Highway can continue to operate for left in and out, if not closed by RMS. This intersection could operate by itself without traffic control. However, in order to introduce a clearer direction to patrons a Traffic Controller will be stationed at this intersection to act as an advanced warning controller, for traffic into and out of the festival. This controller will also discourage festival traffic, where possible, from travelling east down Grays Lane. It should be noted that the event traffic management will not promote the use of this intersection for access to and from the event site if the intersection has not been closed by RMS prior to the event.

Observers will be necessary on the Tyagarah over bridge and on the southbound off-ramp. These observers will be required to give advice to the traffic controllers as to the length of the queue. Adjustments may then be necessary on the site to give increased priority and avoid queues back to the highway.

2.3 - Traffic controllers on the off-ramps

Traffic controllers will not be placed on the off-ramps. These ramps are intended to operate without the need for traffic controllers.

2.4 - Traffic controllers

The first Traffic controllers would be at the Tyagarah Interchange intersection with Tanner Lane and within the site at the northern car park.

2.5 – Traffic Control Plans

The Traffic Control Plan designs aim to minimise the impact of traffic control on all road users and that patrons are encouraged to enter and exit the site in a safe and efficient manner.

The implementation of traffic management arrangements shall be done in accordance with the RMS TCAWS Manual, AS1742.3 and traffic control sub-contractor safe work procedures. Only those personnel who are competent for the task shall be engaged in the implementation of traffic management arrangements.

The approved traffic control plans to be implemented in support of this event are included in the Event Management Plan.

2.6 – Traffic Control Implementation

The duration of the Festival is from Thursday 18 April 2019 to Monday 22 April 2019 The traffic management for the event including pre-event site establishment and site close down will be as follows:

- **WEDNESDAY 10TH APRIL**
 - Installation of no stopping signs every 50m along Gulgan Rd to Mullumbimby Rd. Erected under a standard RMS TCP 83/57 with a shoulder closure used under a standard RMS TCP 42/57 at locations where feasible.
 - Installation of static signage on Gulgan rd roundabout directing people to Festival entrance. Sign install to be implemented under a standard RMS TCP 42/57 shoulder closure.

- **THURSDAY 11TH to FRIDAY 12TH APRIL**
 - Two VMS boards to be installed on the Pacific Highway for northbound and southbound approaches stating “Bluesfest Exit 4kms on left” This is to give advance notification to the public. These VMS will be deployed using a VMS truck as a shadow vehicle displaying “Road Plant Ahead”, “Reduce Speed” and a tow vehicle with the VMS boards. The tow vehicle is to display flashing amber lights.
 - Installation of static signage on Gulgan Rd roundabout directing people to Festival entrance. Under a shoulder closure.
 - Commence internal signage erection
 - Hazard Mesh Fencing to be installed in Fox Lane area to prevent illegal parking and camping. No stopping signs and no camping signs also to be erected in this area at approx 50m segments. Closure of gravel access track in Fox Lane to help prevent illegal camping. Implemented under shoulder closure RMS TCP 42/57.
 - The erection of “NO STOPPING” to be placed every 50m along both sides of Tanner Lane and Yarun Road and the erection of “40km/h” speed signs every 100m on both sides of Tanner lane and Yarun Road. This sign installation is undertaken pre-festival as Tanner Lane and Yarun Road experiences a higher volume of traffic during this time due to the arrival of equipment that is needed for the event and which can be managed. Implemented under a RMS TCP42/57 shoulder closure.

- **MONDAY 15TH to TUESDAY 16TH APRIL**
 - Installation of no stopping signs every 50m along Grays Lane to the intersection of Grays lane and Prestons lane. Erected under a speed reduction with a shoulder closure.
 - Detail 1,2,3,6 signage as per approved TCP are to be erected under shoulder closures.
 - Remaining VMS boards for the highway to be installed.
 - Light towers deployed ready for light check on Wednesday night.
 - Water-filled barriers to be put in place at service station intersection but still allowing normal traffic flow.

- **WEDNESDAY 17TH APRIL**
 - TC on site for the commencement of the campers arrivals at approximately 8am.

- **THURSDAY 18TH APRIL 0600**
 - Opening of the Bluesfest Off Ramp and closure of the current Mullumbimby exit. This is performed under a rolling blockade mobile traffic control arrangement to minimize impact on the Pacific Highway and to avoid having traffic control on foot exposed to live traffic.
 - Traffic control on site from 8am for the first day of Festival.

- **HOURS OF WORK FOR ACTUAL EVENT – THURSDAY to MONDAY**
 - Traffic Control Day Shift Hours 0800 – 1700
 - Day Shift Supervisor – Matthew Adams (Workforce)
 - Traffic Control Night Shift Hours 1700 – 0130 or till last car has left the site.
 - Night Shift Supervisor – Matthew Adams (Workforce)
 - Traffic Control Supervisor (whole event) – Matthew Adams (Workforce)

- **TUESDAY 23RD APRIL**
 - Traffic control crews begin pack-up of Event using the same methodology as the implementation of set-up. The Mullumbimby off-ramp is to be re-opened and the Bluesfest off-ramp is to be closed by 6am Tuesday morning.

3.0 TRAFFIC CONTROL AT SITE GATES

3.1 Main purpose

The main priorities of traffic control at the entries to the site are:

- 2.1.1 Quick entry to the site for event traffic,
- 2.1.2 Safe and efficient site entry and egress;
- 2.1.3 Traffic Controllers monitor for any internal queuing with the potential to cause queueing from the site onto Yarun Road;
- 2.1.4 Traffic Control Supervisor to implement contingency strategy if required to overflow cars into Access 4 (in addition to Access 3), during heavy arrival traffic flows from the south.
- 2.1.5 Traffic Control Supervisor to implement contingency strategy if required to overflow cars from the north into southern entries if required via Tanner Lane, during heavy arrival traffic flows from the north.
- 2.1.6 The Traffic Control Supervisor must be prepared to implement these strategies as

required.

3.2 Campers arrival

Most campers are expected to arrive at the site on Wednesday, Thursday and Friday morning. Campers that arrive on Wednesday, either from the north or south, will be entering through the main southern gate. The new off-ramp access from the north does not open until Thursday morning at 6am.

From Thursday morning, campers approaching from the north will arrive at the site via the new off-ramp, and will be directed by signage, to the camping accreditation area. These campers will be directed by signage to continue along to enter via the southern main gate. If campers ignore the signage, an enter via the north gate an internal VMS board will direct them over the one lane bridge and to the campers check in station. This internal direction will be supported by traffic control located at key positions within the event site.

Campers from the south will access the site during the festival via the southern main gate similar to general patrons and will be directed by traffic control and VMS boards on how to proceed to the campers check in area.

3.3 Day patrons arrival

Day patrons will enter the site either from the north gate or the southern gate depending on their point of origin. Normally the majority of day patrons for the Bluesfest begin arriving about 1 hour before the Festival gates open.

Traffic controllers and the whole traffic control plan will be set up and in operation from the Wednesday before the first Festival gates opening. The traffic plan would remain operative until Wednesday morning, after the festival has finished.

3.4 Buses

All buses and Taxis are to use the southern main entry and exit. There will be no Kiss & Ride facility in the northern area of the event site.

Buses from the north will use the Motorway and exit via Grays Lane or the Southbound Off-Ramp during peak departure times, to reduce the queuing at the Gulgan Road overpass.

3.5 Departure

The departure of vehicles is to be divided as per the parking area. Those in the north parking areas will leave the site and join the highway via the service station intersection and the Tygarah interchange bridge and travel north on the Pacific Highway. The departure for the northern car park patrons to exit to the north will be supported by variable message signs, static signage and traffic control. Any motorists that need to travel south from this point will be directed to turn around at the Gulgan Road north interchange.

Vehicles parking in the southern parking area will leave the site and turn left and travel south on the Pacific Highway. The departure for the southern car park patrons to exit to the north will be supported by variable message signs, static signage and traffic control. Any motorists that need to travel north from this point will be directed to turn around at the Ewingsdale Road interchange.

Exiting buses are to exit using the southern gate and then proceed to the service station, prior to entering the Pacific Highway.

Traffic control will be required to manage the exit from the site and the service station intersection to ensure no significant obstruction of northbound or southbound traffic. The peak bump-out period will be managed by physically separating the traffic from the south and north carparks at the service station intersection with water-filled barriers located in the middle of the road. This will allow traffic exiting the site to the north and south without any conflict. Traffic control will manage the conflict with traffic coming from the Tyagarah overbridge to enter the site precinct and traffic exiting the north carpark.

4.0 ON SITE TRAFFIC CONTROL

4.1 Main purpose

Traffic control outside the event site can only operate effectively for incoming traffic, if the internal traffic and parking is managed properly. Any congestion on-site in the parking area or internal road network may result in queuing on Tanner Lane and Yarun Road and then onto the Pacific Highway.

The traffic control plans therefore require RMS certified traffic controllers at various key locations on site.

4.2 Car parks

The traffic controllers depicted on the TCPs at the entries and internal roads are there to assist festival guests.

It is essential that the traffic controller does not engage in a discussion with the driver of the vehicle but gets the driver off the road, after which the driver is dealt with by festival parking staff. Any congestion at this point would quickly result in queuing onto the public road system, which is not acceptable.

4.3 North-South Internal Road

There are traffic controllers on this road, to provide the opportunity for a relief route, if issues arise at other locations.

Potentially, and based on previous festivals at this site, this road service to relieve the overflow of traffic, if one car park becomes full.

It is likely that south bound campers will be required to use this road along with bus and taxi, to get to the existing bus and taxi bays. Also for campers to get to the camp check out area. This will be required if no northern facilities for campers check in or bus and taxi set down and pick up are provided.

This traffic control of the north-south road does also affect the back-of-house operation and has to be managed well to keep the function of the festival and ensure that these traffic conflicts are managed such that no queuing appears onto the public road network.

4.4 Bus and taxi ranks

Traffic controllers at the bus and taxi ranks are not required other than to get buses and taxi in and out of the traffic line to ensure that these ranks are operated safely and congestion is prevented both in the ranks as well as on the internal road system.

4.5 Role of On-site Supervising Traffic Engineer

The Supervising Traffic Engineer shall direct the traffic, parking and camping controllers, as required, to ensure an efficient entry and exit from the site. This role will also incorporate decisions with respect to

the use of overflow parking areas.

5.0 MONITORING

The Supervising Traffic Engineer will undertake site monitoring in consultation and co-ordination with traffic control resources during the event to:

- ensure traffic management arrangements are installed in accordance with the approved TCPs;
- ensure traffic control implementation and operation is in compliance with RMS TCAWS manual and AS1742.3;
- observe driver behavior on the external road network and internal car park access to assess the suitability of the traffic management arrangements associated with the event and implement changes as necessary; and
- ensure compliance with DA conditions including end of queue management and traffic flow rates on local roads .

Traffic control observers will be utilized at key locations to monitor queue lengths against known markers and undertake spot traffic counts to measure traffic flows during peak traffic flow periods.

An evaluation report will be prepared following the event to assess the traffic management performance against the relevant standards and guidelines and key performance indicators.

6.0 PAID PARKING

Bluesfest is introducing paid parking for the 2019 Event to offset the significant annual investment into parking infrastructure capital & recurrent, mounting costs of Traffic Management, increased User Pays Police contingent for Counter Terrorism including Hostile Vehicle Mitigation Measures.

The Paid Parking will not affect the previous points 1.0 through 5.0 of this Traffic Management Plan. Patrons will pre-purchase their parking tickets online and a new team of staff will be employed to scan and check patrons parking tickets for the correct days. Their tickets will be scanned by hand held devices. The parking team will only approach cars for their pre-paid ticket once they have been directed to a parking bay.

For the small number of patrons that have not pre-purchased a ticket before they arrive they will have the chance to purchase one on the spot from one of our paid parking staff. The method of collection will be a combination of a Credit Card Tap Device or a cash payment and that will be indicated to our Patrons before they arrive. Card will be encouraged, and we will have campaigns around this message. Extra signage at entrance points to the Festival Site will also reinforce what to expect on parking their vehicles.

Staff and contractors will be supplied with a sticker and or identification pass that will allow them to park straight away and not incur the paid parking fee.

We will have ample information campaigns commencing before we go on sale, whilst we are on sale and during the festival. We will notify patrons of this new initiative of the festival via our online EDM's, Facebook page, Instagram page, SMS campaigns and side of stage screens. We will provide them with detailed information on how to pre-purchase and what occurs if they do not pre-purchase.

The Payment collection team will be under the direction of our experienced North and South Car Park Supervisors who will be monitoring queue lines and flow rates of traffic within the car parks. Through our website and social media platforms we will be engaging our patrons to notify them of the payment structure and to be ready with payment on arrival.

At any point during a peak flow period if the Paid Parking initiative impacts on the traffic flow it will be

suspended until it is deemed practical to continue.

The safety of our Staff, Patrons and Traffic Flow on the Pacific Hwy is of the highest importance and will be considered first at all times. By introducing paid parking not only do we get the opportunity to offset the significant annual investment into parking infrastructure capital & recurrent it also gives our staff a chance to engage vehicle occupants before they enter the Festival area to assess any suspicious behavior and alert Security & Police.

We believe this initiative is beneficial for the smoother running, financial bottom line and safety of our festival.

7.0 RECOMMENDATIONS FROM 2018 TRAFFIC EVALUATION REPORT

This Traffic Management Plan has been updated as required in accordance with recommendations from Section 12 of the *Traffic Evaluation Report, Bluesfest 2018*, (Document 18243 TER Rev 0), by Greg Alderson and Associates, May 2017

The recommendations from the report and the adopted actions are:

1. ***Improve event directional signage at the service station intersection, particularly for vehicles picking up patrons at night-time (consider electronic signage);***

Action: There will be 2 x Directional VMS boards located at the North and South bound exits at the service station intersection. It will have different messages during daytime and night time entry and exit.

During daytime hours the display will read;

- Pick Up/Drop Off Area (this way)
- Camping
- Day Parking

Upon exiting during night time hours the display will read;

- Northbound RIGHT
- Southbound LEFT

8.0 CONTACT DETAILS

Promoter Peter Noble
Phone: 02 6639 9800

Site Management: Bluesfest Services
Event Manager: Brendan Meek
Mobile: 0411 207 011
E-mail: brendan.meek@bluesfest.com.au

Council: Evan Elford, Team Leader Infrastructure Planning
Phone: 02 6626 7000
E-mail: evan.elford@byron.nsw.gov.au

Roads and Maritime Services: Jonathon Crocker – Manager Special Events & Operations Planning
Phone: 02 6923 6606
Mobile: 0438 640 850
E-mail: Jonathon.crocker@rms.nsw.gov.au

Supervising Traffic Engineer: Hayden Kress, Greg Alderson & Associates
Mobile: 0437 873 564
Email: office@aldersonassociates.com.au

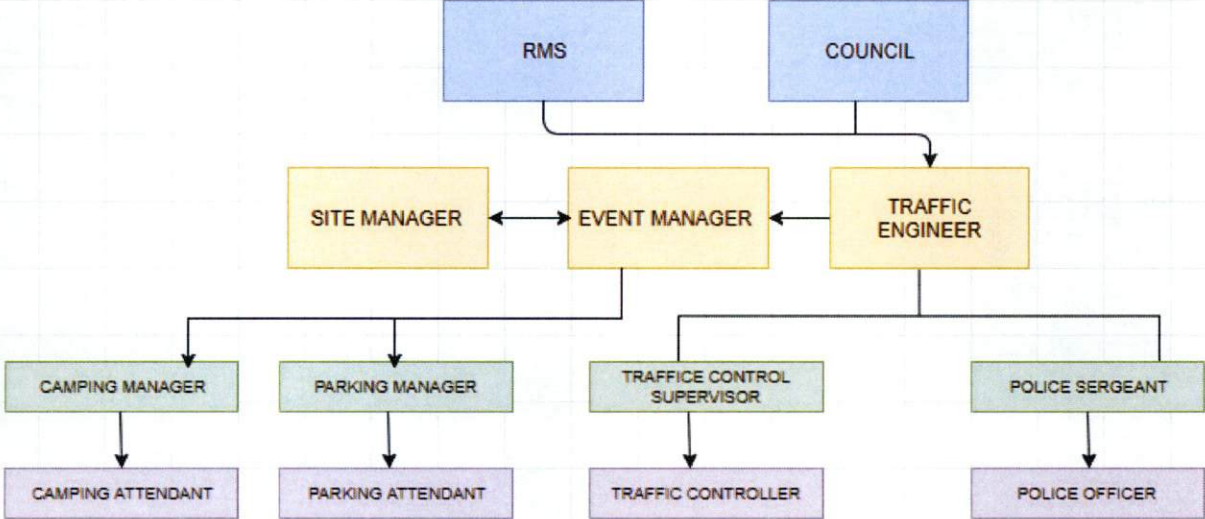
Traffic Control Supervisor: Matthew Adams
Mobile: 0427 196 222
Email: matthew.adams@workforce.com.au

Parking Control Supervisor: Rex Butler
Mobile: 0412 814 823

Pick Up/Drop Off & Bus Stop Supervisor: Clint Lazarus
Mobile: 0449 069 530

Camping Control Supervisor: Tony Reynolds
Mobile: 0419 508 483

9.0 COMMAND STRUCTURE





BYRON SHIRE COUNCIL
DOC NO:.....
RECD: - 8 OCT 2018
FILE NO:.....
ASSIGNEE:

BLUESFEST 2019 TRAFFIC CONTROL PLAN

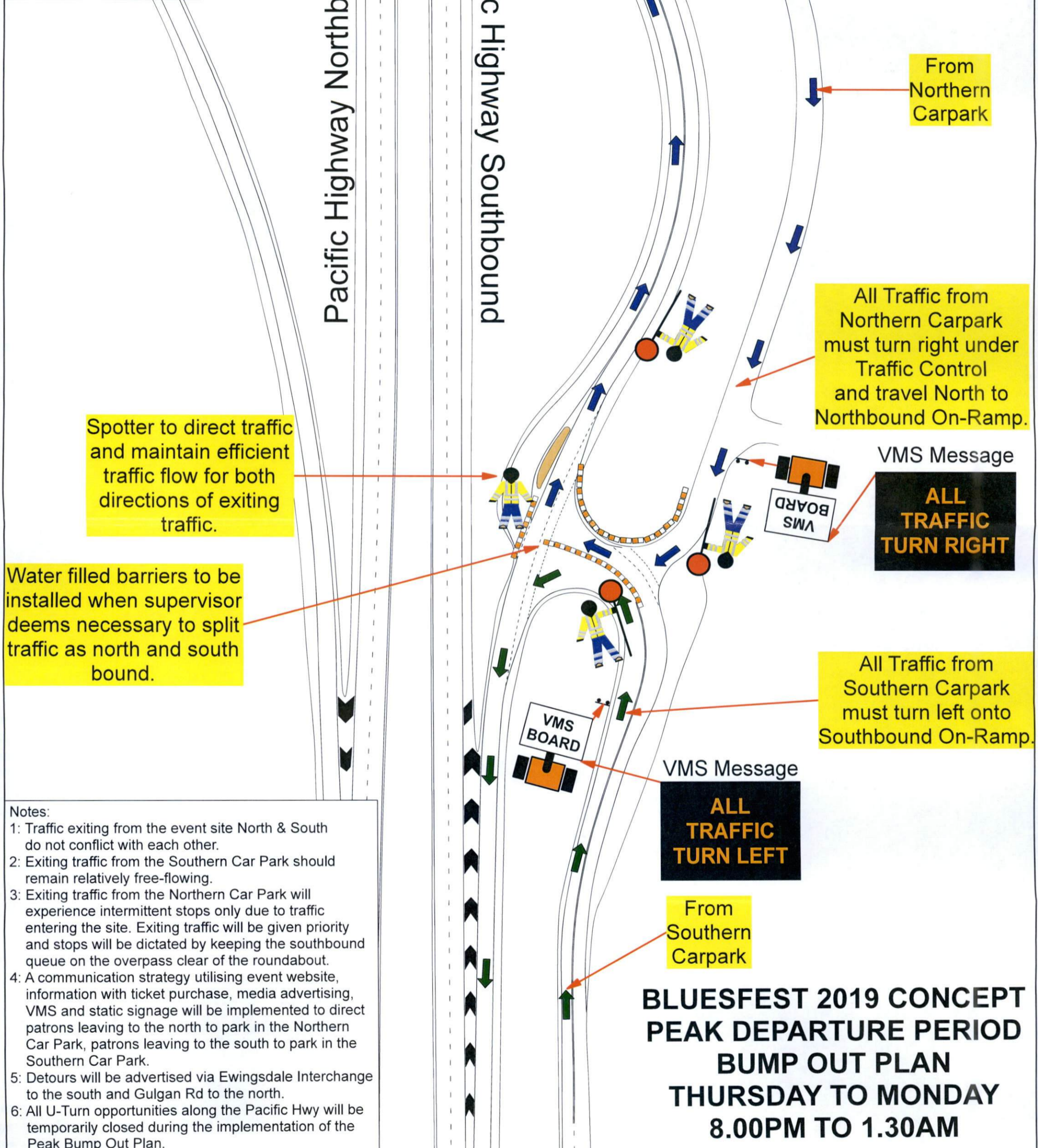
For
Bluesfest Services Pty Ltd

RECEIVED BY FRONT COUNTER
8 OCT 2018
BYRON SHIRE COUNCIL

2019 TRAFFIC CONTROL PLAN

Legend

- From Southern Car Park
- From Northern Car Park
- Spotter
- Water Filled Barrier
- Traffic Controller
- VMS Board



Spotter to direct traffic and maintain efficient traffic flow for both directions of exiting traffic.

Water filled barriers to be installed when supervisor deems necessary to split traffic as north and south bound.

All Traffic from Northern Carpark must turn right under Traffic Control and travel North to Northbound On-Ramp.

VMS Message
ALL TRAFFIC TURN RIGHT

All Traffic from Southern Carpark must turn left onto Southbound On-Ramp.

VMS Message
ALL TRAFFIC TURN LEFT

From Southern Carpark

BLUESFEST 2019 CONCEPT PEAK DEPARTURE PERIOD BUMP OUT PLAN THURSDAY TO MONDAY 8.00PM TO 1.30AM

- Notes:**
- 1: Traffic exiting from the event site North & South do not conflict with each other.
 - 2: Exiting traffic from the Southern Car Park should remain relatively free-flowing.
 - 3: Exiting traffic from the Northern Car Park will experience intermittent stops only due to traffic entering the site. Exiting traffic will be given priority and stops will be dictated by keeping the southbound queue on the overpass clear of the roundabout.
 - 4: A communication strategy utilising event website, information with ticket purchase, media advertising, VMS and static signage will be implemented to direct patrons leaving to the north to park in the Northern Car Park, patrons leaving to the south to park in the Southern Car Park.
 - 5: Detours will be advertised via Ewingsdale Interchange to the south and Gulgan Rd to the north.
 - 6: All U-Turn opportunities along the Pacific Hwy will be temporarily closed during the implementation of the Peak Bump Out Plan.

No.	By:	Date:	Description:	Appr:
1	SD	05/09/18	Issued for Implementation	PI
2				
3				
4				
5				
6				

Original Size A3 This TCP is not to scale

WORKFORCE ROAD SERVICES

Job Location: Pacific Hwy Tyagarah Work Activity: Peak Bump Out Plan

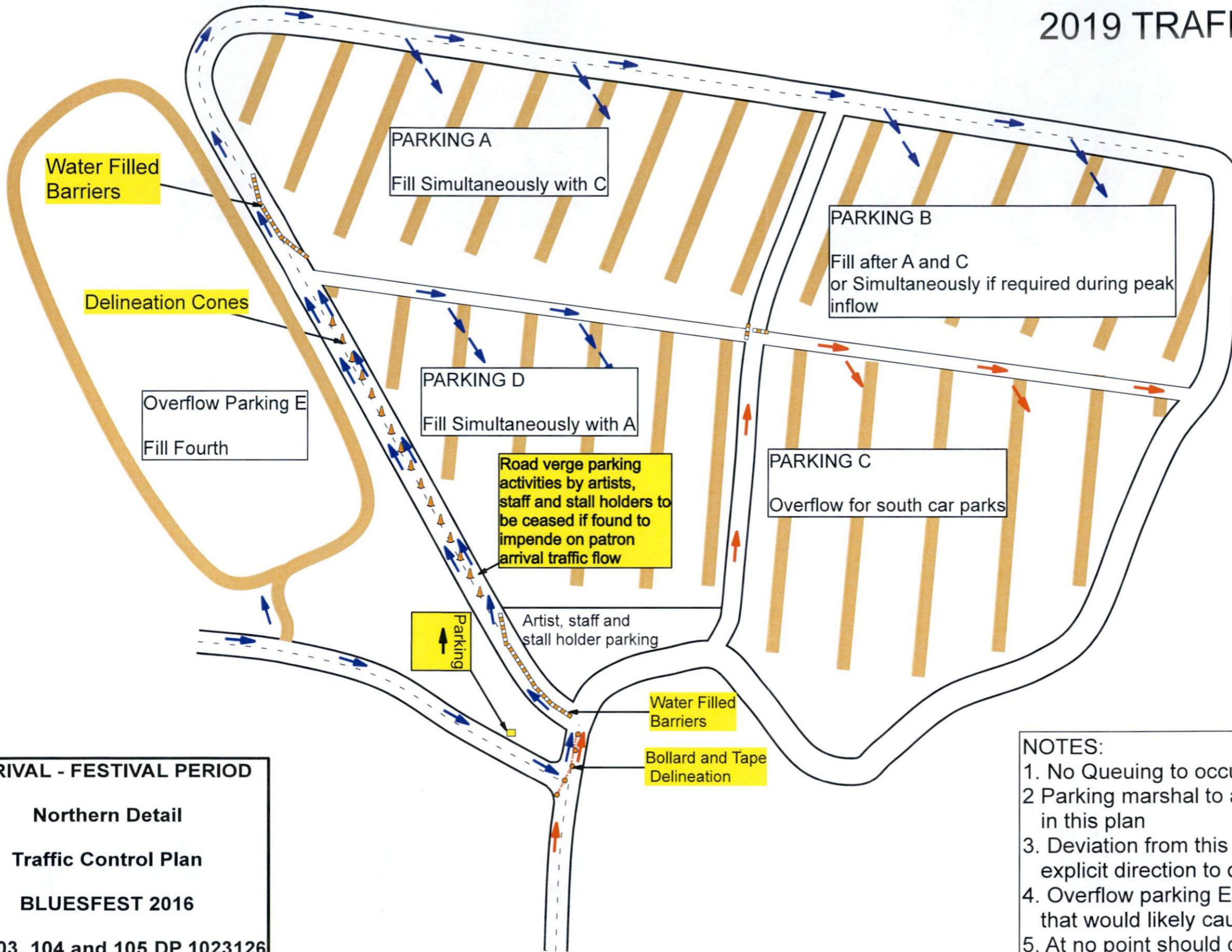
Client: Blues Festival Pty Ltd Drawing Number: WRS-TCP-15271

Drawn By: Steve Duck Prepare Work Zone Number : 0027386365 Exp Date: 21st Nov 2018 Signed:

Approved By: Peter Ingram Prepare Work Zone Number : 0030163634 Exp Date: 5th April 2019 Signed:

Workforce Road Services Planning Division Ph: 02 4960 7570 After Hours Ph : 1300 936 723 Email : trafficplans@workforce.com.au

2019 TRAFFIC CONTROL PLAN



Legend	
	ALL TRAFFIC FROM NORTH
	ALL TRAFFIC FROM SOUTH
	Bollard
	Cone
	Tape Delineation
	Water Filled Barrier

- NOTES:**
1. No Queuing to occur past site gate.
 2. Parking marshal to adhere to parking sequence depicted in this plan
 3. Deviation from this plan can only be made following explicit direction to do so by supervising traffic engineer.
 4. Overflow parking E not to be used during arrival peak as that would likely cause queuing outside site gate.
 5. At no point should cars from South and Cars from North be allowed to park in the same area

ARRIVAL - FESTIVAL PERIOD

Northern Detail

Traffic Control Plan

BLUESFEST 2016

Lot 103, 104 and 105 DP 1023126
Old Pacific Highway, Tyagarah

Revisions	No:	By:	Date:	Description:	Appr:
	1	SD	05/09/18	Issued for Implementation	PI
	2	SD	21/09/18	Amendments as per MA	PI
	3				
	4				
	5				
	6				

Disclaimer:
 This guidance scheme is for Traffic Management purposes only. Workforce Road Services disclaims all responsibility and all liability (including without limitation, liability in negligence) for all expenses, losses, damages and costs you might incur as a result of the information being inaccurate or incomplete in any way, and for any reason. This plan is drawn in accordance with the TCAWS manual.

Client Contact: Brendan Meek
Contact Number: 0411 207 011

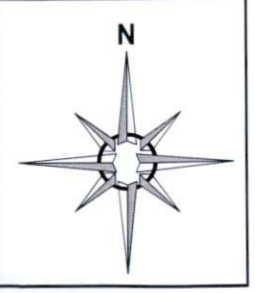


Job Location: Pacific Hwy Tyagarah
Client: Blues Festival Pty Ltd
Work Activity: Arrival Period
Drawing Number: WRS-TCP-15275

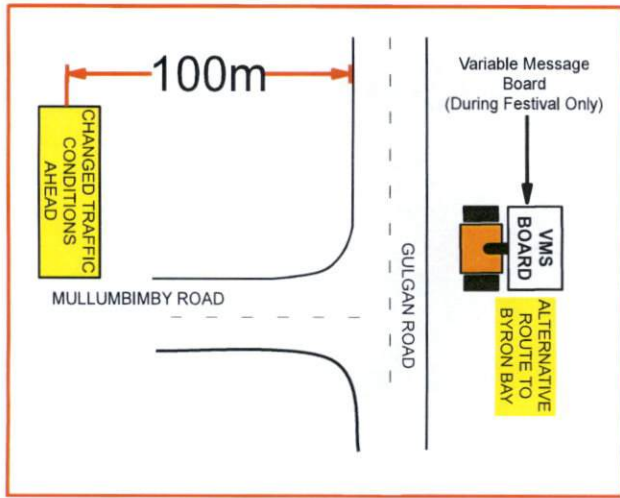
Drawn By: Steve Duck Prepare Work Zone Number : 0027386365 Exp Date: 21st Nov 2018 Signed:

Approved By: Peter Ingram Prepare Work Zone Number : 0030163634 Exp Date: 5th April 2019 Signed:

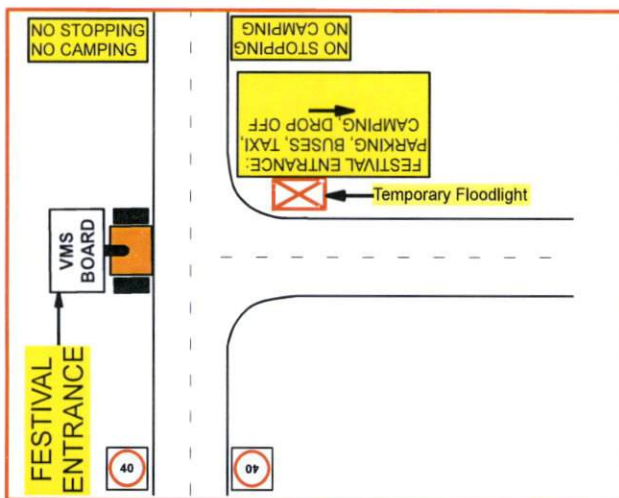
Workforce Road Services Planning Division Ph: 02 4960 7570 After Hours Ph : 1300 936 723 Email : trafficplans@workforce.com.au



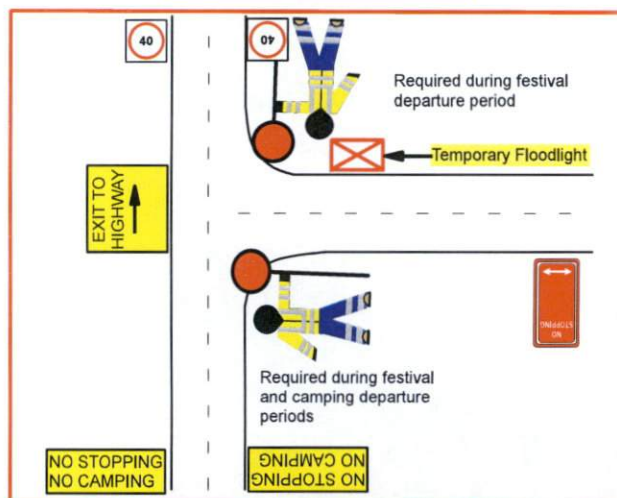
DETAIL 1 - GULGAN/MULLUMBIMBY RD INTERSECTION



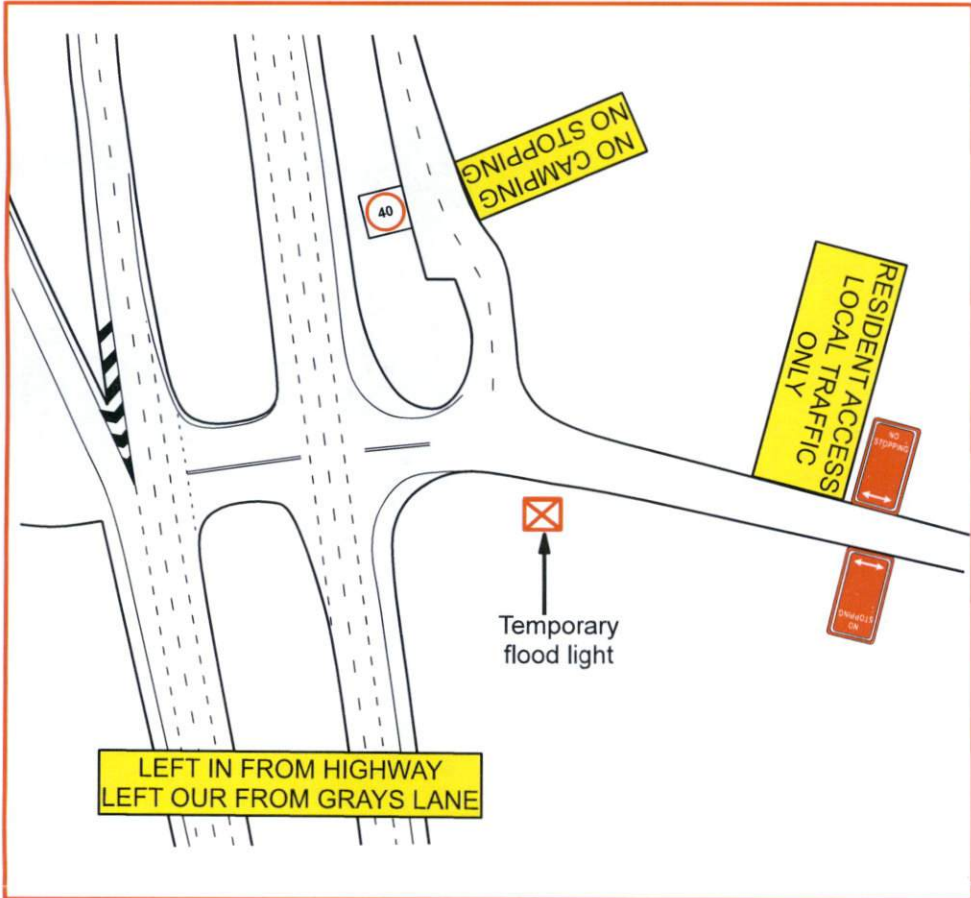
DETAIL 2 - ACCESS 3



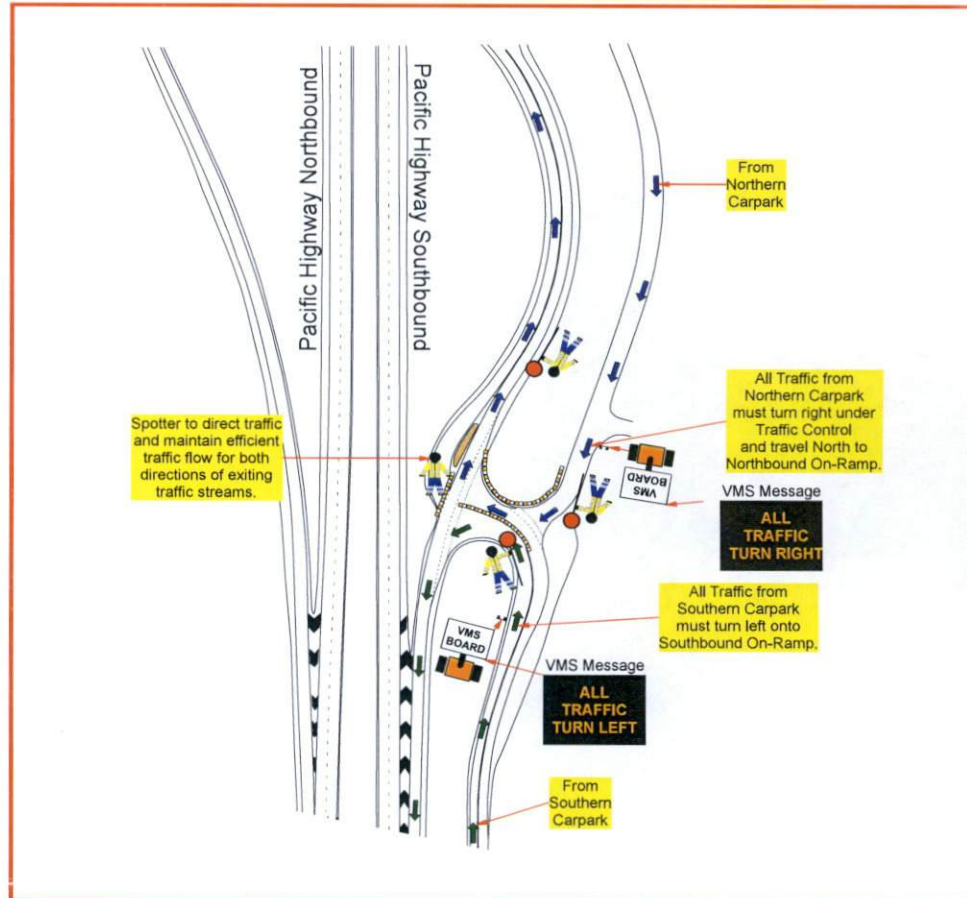
DETAIL 3 - ACCESS 4



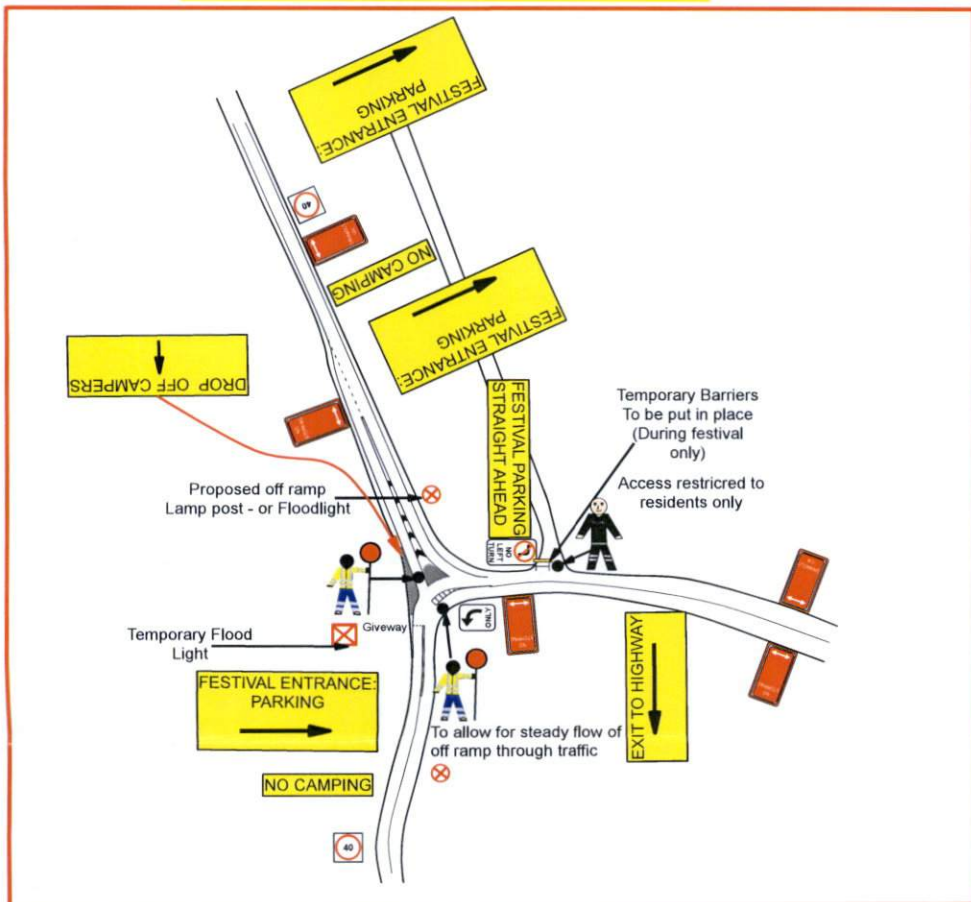
DETAIL 4 - GRAYS LANE - DURING FESTIVAL



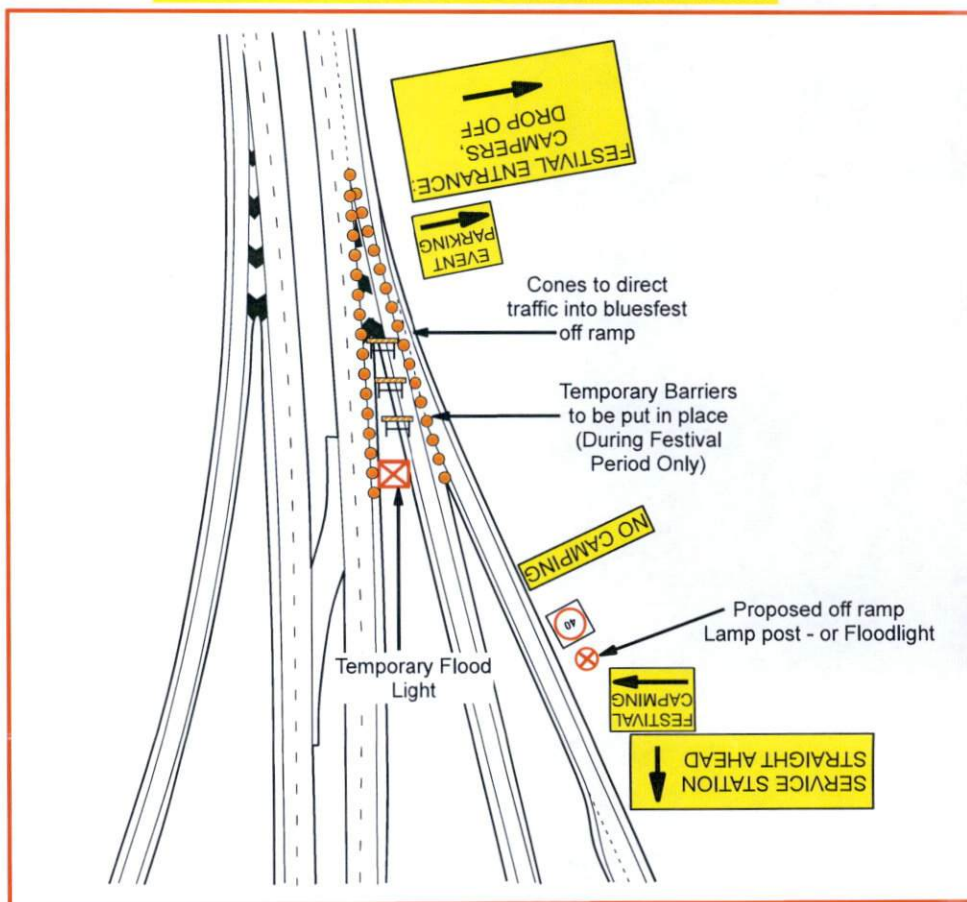
DETAIL 5 - SERVICE STATION & ROUNDABOUT



DETAIL 6 - ACCESS 1 SOUTH OFF RAMP



DETAIL 7 - OPENING OF BLUESFEST OFF RAMP



Legend

- From Northern Car Park
- From Southern Car Park
- Spotter
- Traffic Controller
- VMS Board
- Water Filled Barrier

2019 TRAFFIC CONTROL PLAN

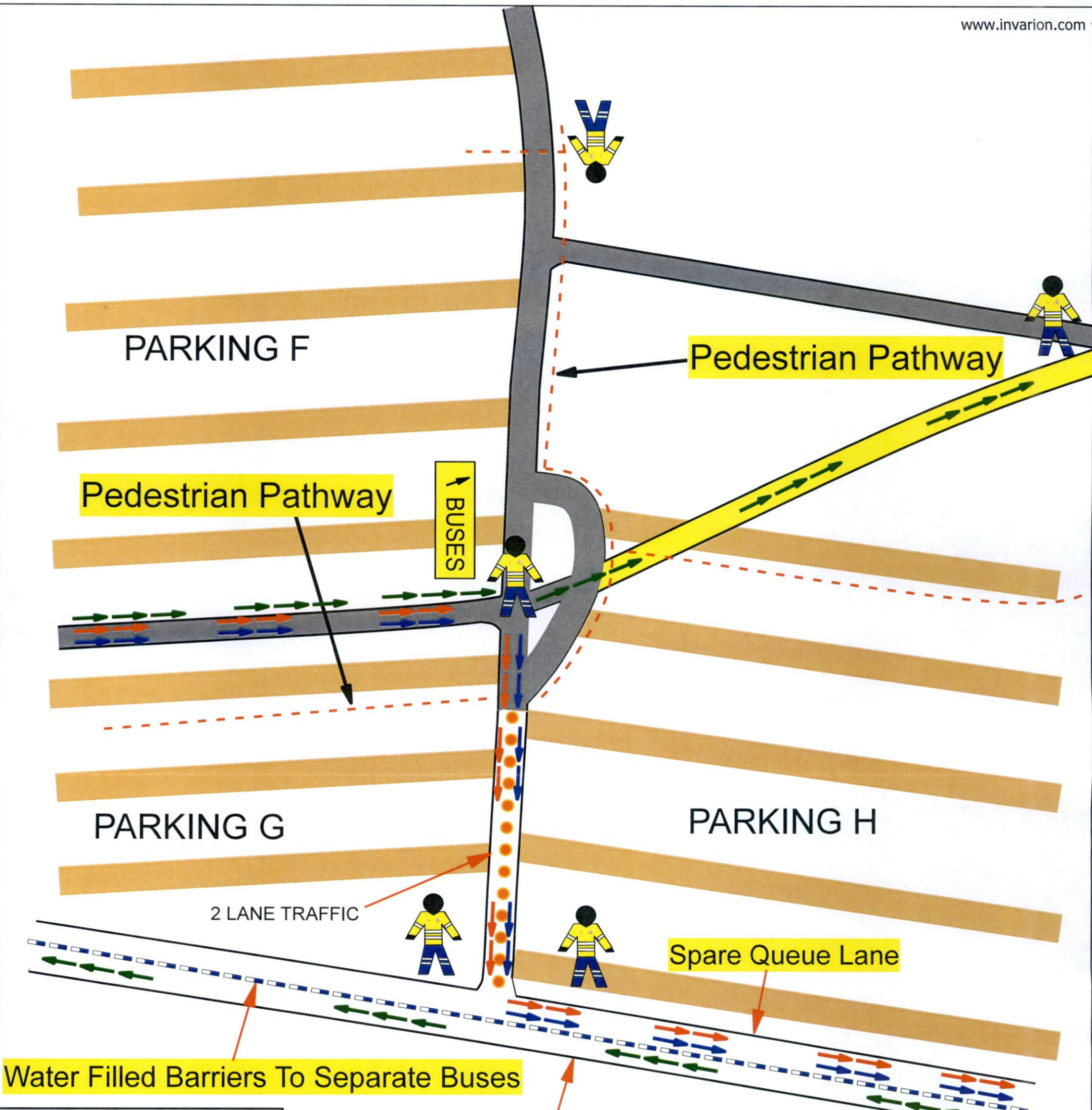
Revisions	No.	By:	Date:	Description:	Appr:
	1	SD	05/09/18	Issued for Implementation	PI
	2	SD	19/09/18	Amendments as per MA	PI
	3				
	4				
	5				
	6				

Original Size A3 This TCP is not to scale



Job Location: Pacific Hwy Tyagarah	Work Activity: Special Event
Client: Blues Festival Pty Ltd	Drawing Number: WRS-TCP-15280
Drawn By: Steve Duck	Prepare Work Zone Number : 0027386365 Exp Date: 21st Nov 2018 Signed:
Approved By: Peter Ingram	Prepare Work Zone Number : 0030163634 Exp Date: 5th April 2019 Signed:
Workforce Road Services Planning Division Ph: 02 4960 7570 After Hours Ph : 1300 936 723 Email : trafficplans@workforce.com.au	





Legend

- Bus Route
- Camper Route
- Cone
- Parking
- Pedestrian Path
- Water Filled Barrier

2019 TRAFFIC CONTROL PLAN

CAMPERS PRE FESTIVAL ARRIVAL

Southern Detail

Traffic Control Plan

BLUESFEST 2016

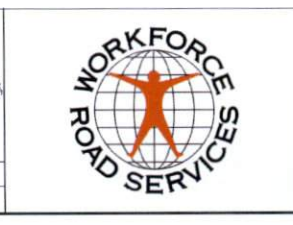
Lot 103, 104 and 105 DP 1023126
Old Pacific Highway, Tyagarah

Revisions	No.	By:	Date:	Description:	Appr:
1	SD	05/09/18		Issued for Implementation	PI
2	SD	19/09/18		Amendments as per MA	PI
3					
4					
5					
6					

Original Size A3 This TCP is not to scale

Disclaimer:
This guidance scheme is for Traffic Management purposes only. Workforce Road Services disclaims all responsibility and all liability (including without limitation, liability in negligence) for all expenses, losses, damages and costs you might incur as a result of the information being inaccurate or incomplete in any way, and for any reason. This plan is drawn in accordance with the TCAMS manual.

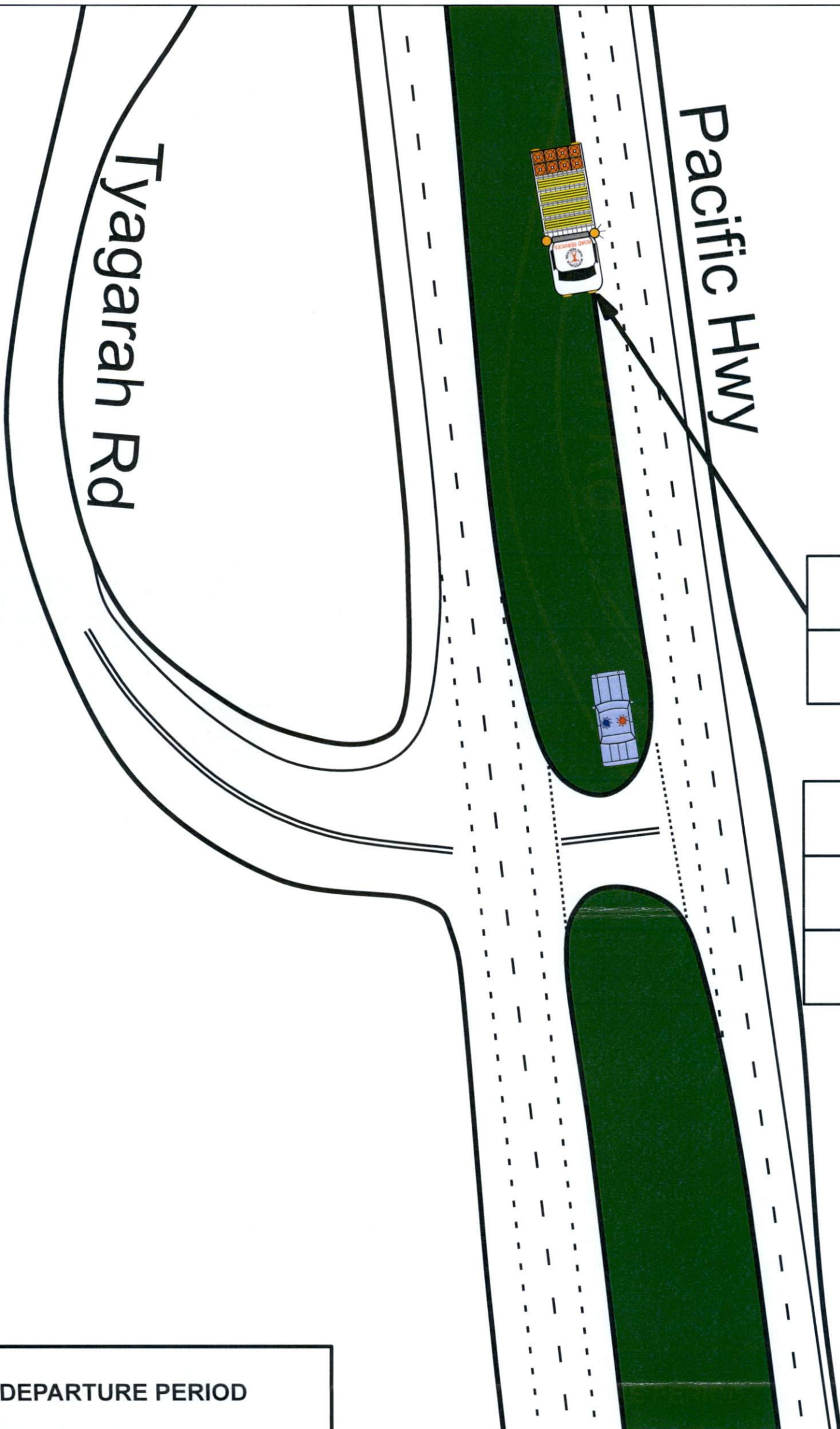
Client Contact: **Brendan Meek**
Contact Number: 0411 207 011



Job Location: Pacific Hwy Tyagarah	Work Activity: Special Event
Client: Blues Festival Pty Ltd	Drawing Number: WRS-TCP-15284
Drawn By: Steve Duck	Prepare Work Zone Number: 0027386365
Exp Date: 21st Nov 2018	Signed:
Approved By: Peter Ingram	Prepare Work Zone Number: 0030163634
Exp Date: 5th April 2019	Signed:
Workforce Road Services Planning Division Ph: 02 4960 7570 After Hours Ph: 1300 936 723 Email: trafficplans@workforce.com.au	



-  Police Vehicle
-  VMS Truck



VMS SCREEN 1

- NO
- U-TURN

VMS SCREEN 2

- USE
- EWINGSDALE
- INTERCHANGE

DEPARTURE PERIOD
Tyagarah Rd Cross Over

2019 TRAFFIC CONTROL PLAN



Tyagarah Road cross over to be monitored and managed by traffic control and/or police resources during the operation of the detour, VMS located on approach to the cross over will advise the detour to the north is via Ewingsdale Interchange

Revisions	No.	By:	Date:	Description:	Appr:
1	SD	05/09/18	Issued for Implementation	PI	
2					
3					
4					
5					
6					

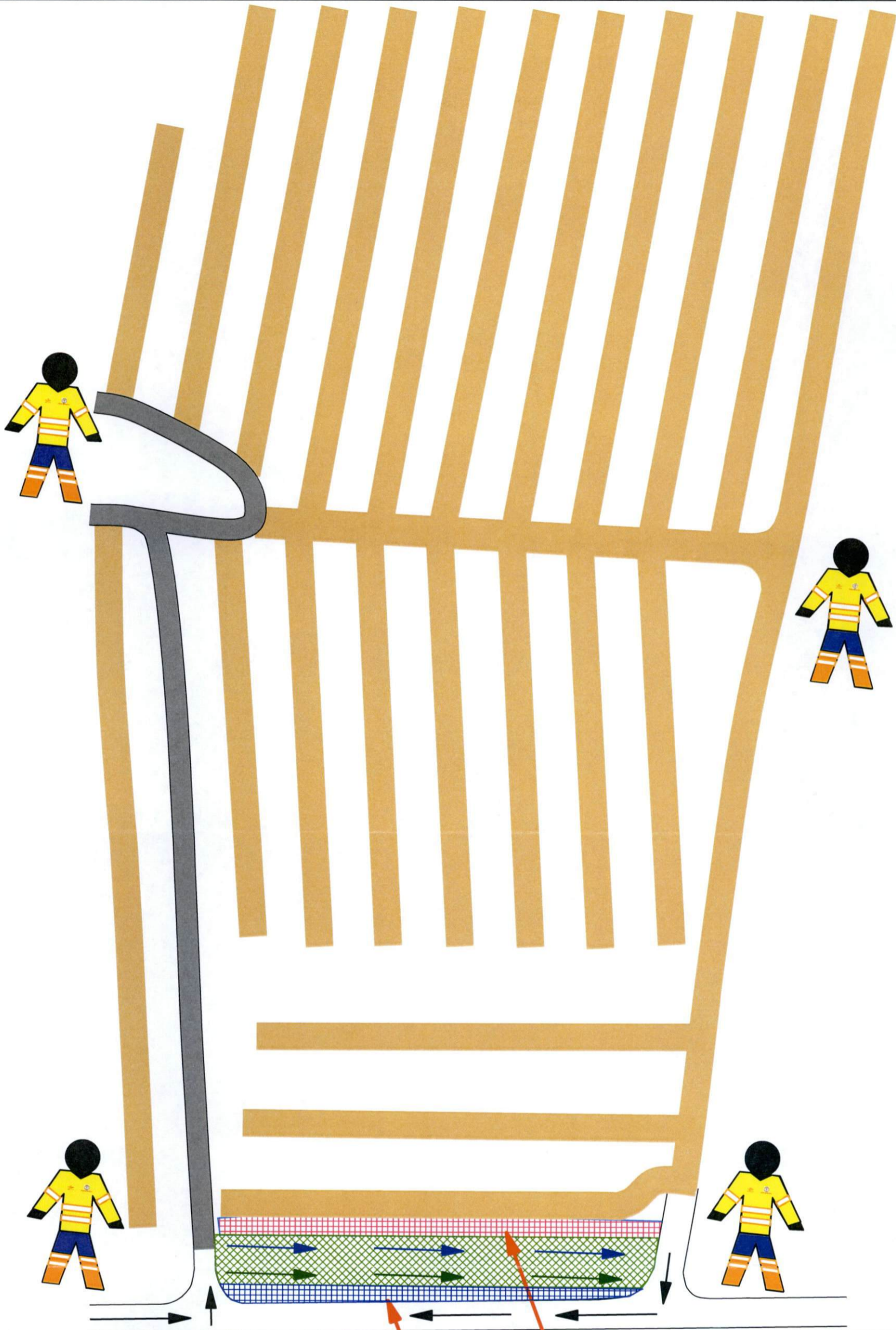
Disclaimer:
This guidance scheme is for Traffic Management purposes only. Workforce Road Services disclaims all responsibility and all liability (including without limitation, liability in negligence) for all expenses, losses, damages and costs you might incur as a result of the information being inaccurate or incomplete in any way, and for any reasons. This plan is drawn in accordance with the TCAMS manual.

Client Contact: **Brendan Meek**
Contact Number: 0411 207 011



Job Location: Pacific Hwy Tyagarah	Work Activity: Special Events
Client: Blues Festival Pty Ltd	Drawing Number: WRS-TCP-15285
Drawn By: Steve Duck	Prepare Work Zone Number : 0027386365
Exp Date: 21st Nov 2018	Signed: 
Approved By: Peter Ingram	Prepare Work Zone Number : 0030163634
Exp Date: 5th April 2019	Signed: 
Workforce Road Services Planning Division Ph: 02 4960 7570 After Hours Ph : 1300 936 723 Email : trafficplans@workforce.com.au	





Holding Zone Pick Up Zone

Legend

-  Holding Zone For Pick Up
-  Immediate Pick Up Zone
-  Pick Up Holding Zone
-  Pick Up Immediate
-  Traffic Controller



2019 TRAFFIC CONTROL PLAN

Revisions	No:	By:	Date:	Description:	Appr:
1	SD		05/09/18	Issued for Implementation	PI
2					
3					
4					
5					
6					

Disclaimer:
This guidance scheme is for Traffic Management purposes only.
Workforce Road Services disclaims all responsibility and all liability
(including without limitation, liability in negligence) for all expenses, losses,
damages and costs you might incur as a result of the information being
inaccurate or incomplete in any way, and for any reason. This plan is
drawn in accordance with the TCAMS manual.

Client Contact: Brendan Meek
Contact Number: 0411 207 011



Job Location: Pacific Hwy Tyagarah	Work Activity: Special Event
Client: Blues Festival Pty Ltd	Drawing Number: WRS-TCP-15286
Drawn By: Steve Duck	Prepare Work Zone Number : 0027386365 Exp Date: 21st Nov 2018 Signed: 
Approved By: Peter Ingram	Prepare Work Zone Number : 0030163634 Exp Date: 5th April 2019 Signed: 
Workforce Road Services Planning Division Ph: 02 4960 7570 After Hours Ph : 1300 936 723 Email : trafficplans@workforce.com.au	



Festival Departures

2019 TRAFFIC CONTROL PLAN

www.invarion.com

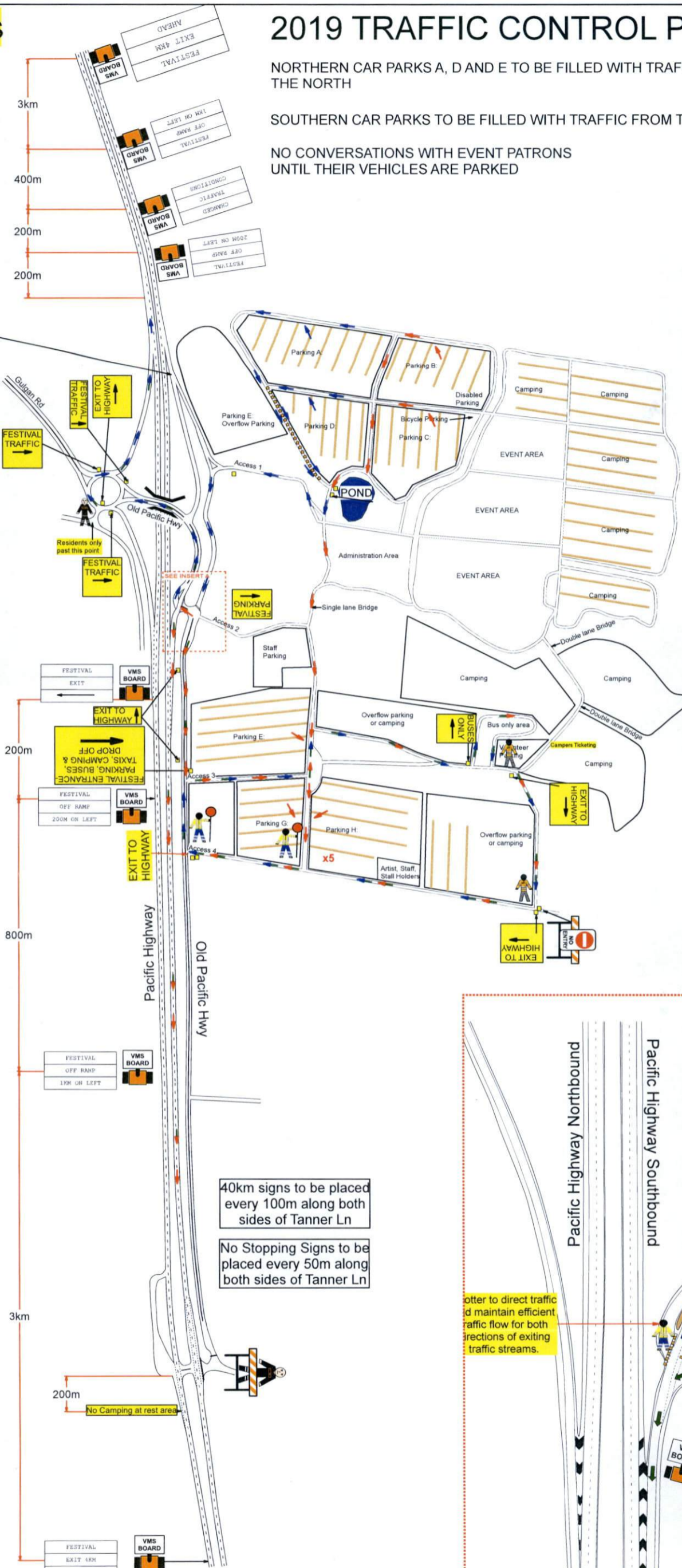
NORTHERN CAR PARKS A, D AND E TO BE FILLED WITH TRAFFIC FROM THE NORTH

SOUTHERN CAR PARKS TO BE FILLED WITH TRAFFIC FROM THE SOUTH

NO CONVERSATIONS WITH EVENT PATRONS UNTIL THEIR VEHICLES ARE PARKED

Legend

- Traffic Controller
- ALL TRAFFIC FROM SOUTH
- ALL TRAFFIC FROM NORTH
- Jersey
- Water Filled Barrier
- Spotter
- From Northern Car Park
- From Southern Car Park
- VMS Board



Old off-ramp to be closed and new off-ramp opened

No stopping signs to be placed every 50m along both sides of Gulgan Road (back to Mullumbimby Road = approx 1000m)

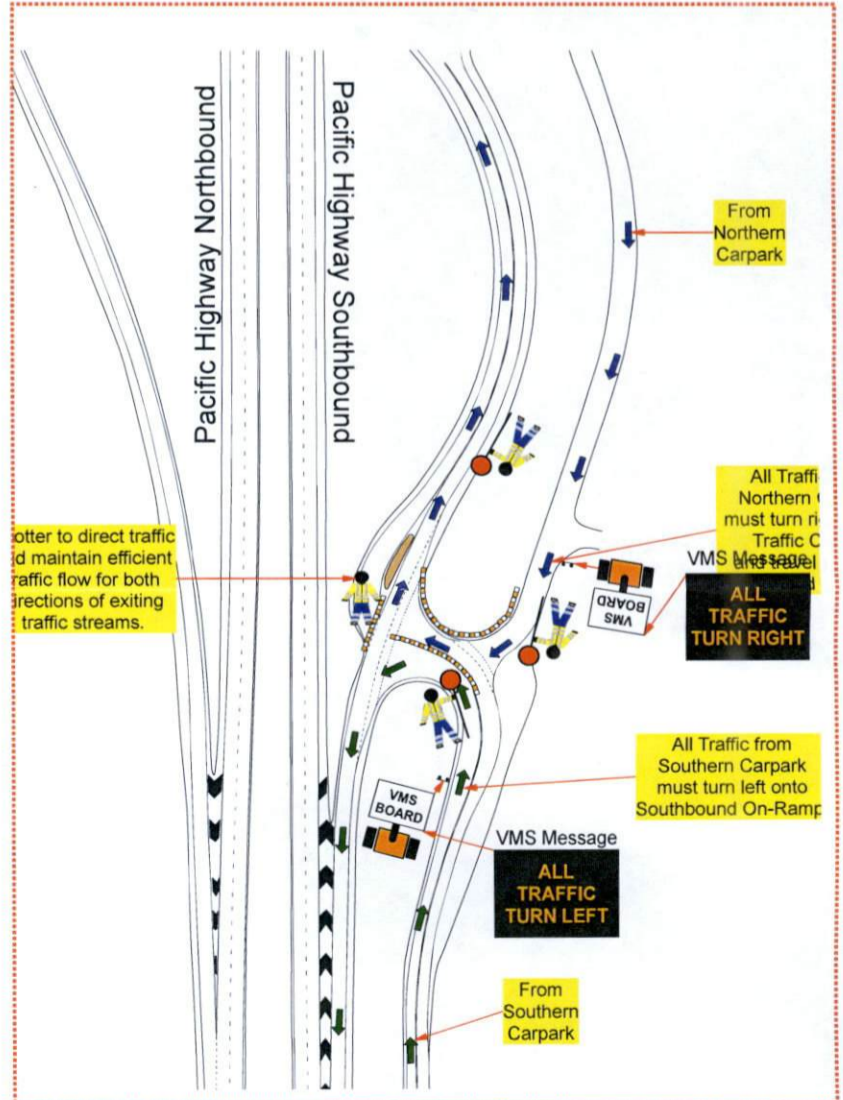
Block off access to existing gravel track to Fox Lane.

Hazard mesh fencing to be used to help stop illegal parking in this area.

Security guards to ensure no illegal camping occurs in this area.

No Stopping signs to be placed every 50m along both sides of Fox Lane

40km signs to be placed every 100m along both sides of Tanner Ln
 No Stopping Signs to be placed every 50m along both sides of Tanner Ln



DEPARTURE - FESTIVAL PERIOD
Traffic Control Plan
BLUESFEST 2016
 Lot 103, 104 and 105 DP 1023126
 Old Pacific Highway, Tyagarah

Revisions	No.	By:	Date:	Description:	Appr.:
1	SD	06/09/18	Issued for Implementation	PI	
2	SD	19/09/18	Amendments as per MA	PI	
3	SD	21/09/18	Amendments as per MA	PI	
4					
5					
6					

Client Contact: Brendan Meek
 Contact Number: 0411 207 011

Disclaimer:
 This guidance scheme is for Traffic Management purposes only. Workforce Road Services disclaims all responsibility and all liability (including without limitation, liability in negligence) for all expenses, losses, damages and costs you might incur as a result of the information being inaccurate or incomplete in any way, and for any reason. This plan is drawn in accordance with the TCAWS manual.



Job Location: Pacific Hwy Tyagarah	Work Activity: Special Event
Client: Blues Festival Pty Ltd	Drawing Number: WRS-TCP-15289
Drawn By: Steve Duck	Prepare Work Zone Number: 0027386365
Exp Date: 21st Nov 2018	Signed:
Approved By: Peter Ingram	Prepare Work Zone Number: 0030163634
Exp Date: 5th April 2019	Signed:
Workforce Road Services Planning Division Ph: 02 4960 7570 After Hours Ph: 1300 936 723 Email: trafficplans@workforce.com.au	

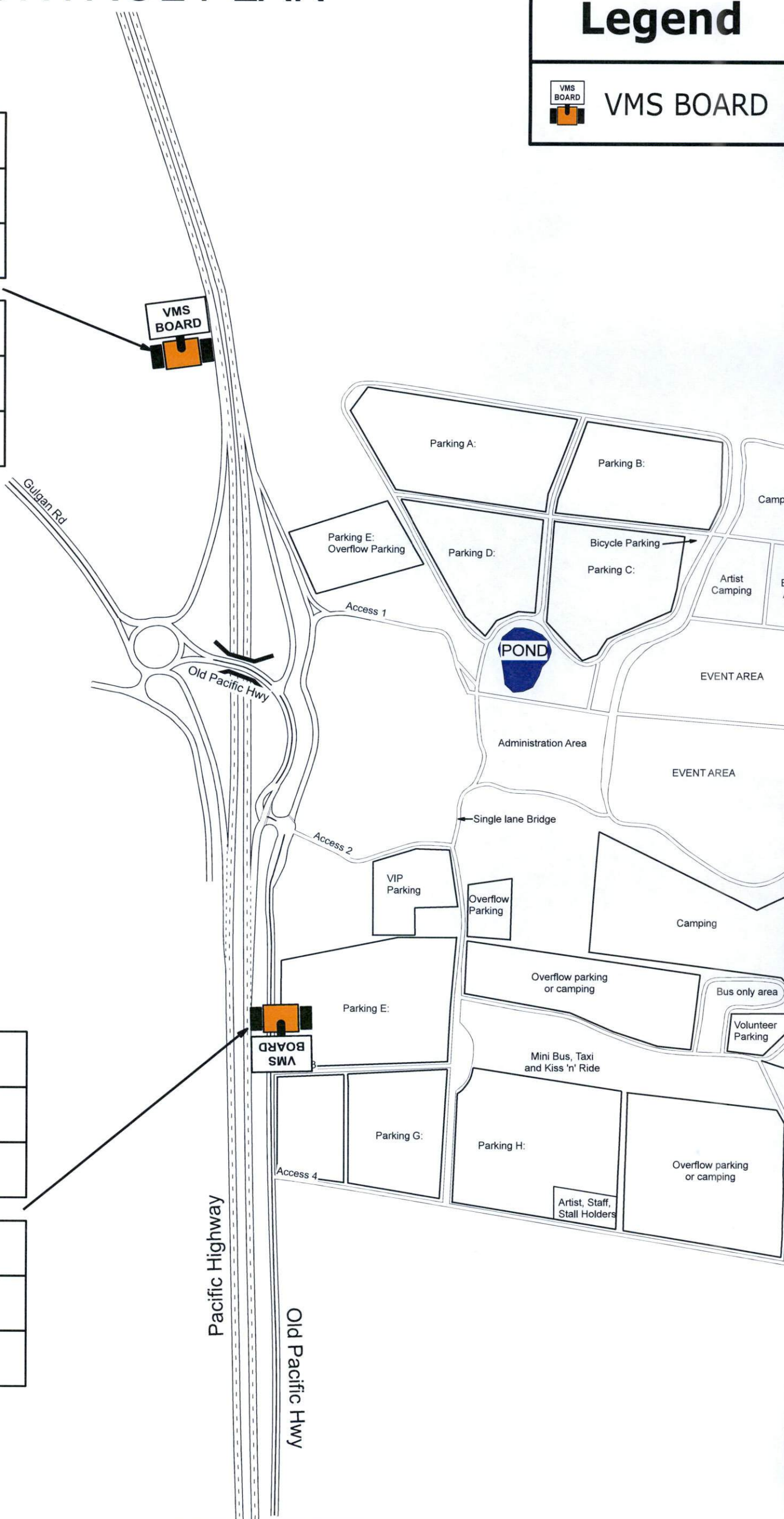
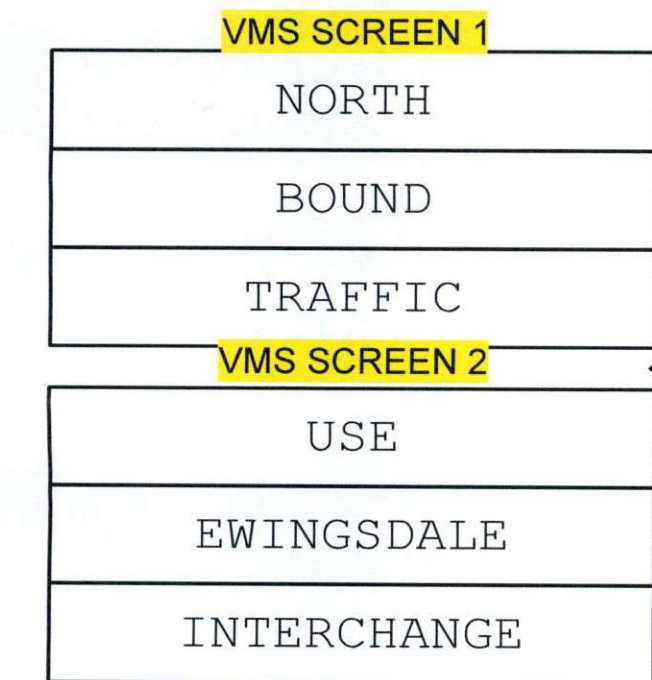
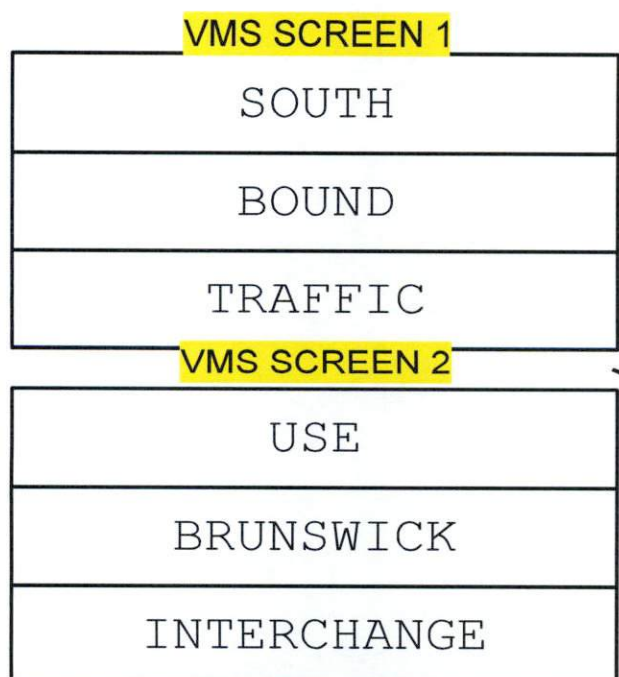


2019 TRAFFIC CONTROL PLAN

Legend



VMS BOARD



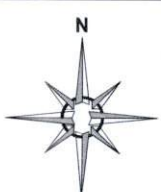
Revisions	No:	By:	Date:	Description:	Appr:
1	SD		06/09/18	Issued for Implementation	PI
2					
3					
4					
5					
6					

Disclaimer:
This guidance scheme is for Traffic Management purposes only. Workforce Road Services disclaims all responsibility and all liability (including without limitation, liability in negligence) for all expenses, losses, damages and costs you might incur as a result of the information being inaccurate or incomplete in any way, and for any reason. This plan is drawn in accordance with the TCAMS manual.

Client Contact: **Brendan Meek**
Contact Number: 0411 207 011



Job Location: Pacific Hwy Tyagarah	Work Activity: Special Event
Client: Blues Festival Pty Ltd	Drawing Number: WRS-TCP-15293
Drawn By: Steve Duck	Prepare Work Zone Number : 0027386365
Exp Date: 21st Nov 2018	Signed: <i>[Signature]</i>
Approved By: Peter Ingram	Prepare Work Zone Number : 0030163634
Exp Date: 5th April 2019	Signed: <i>[Signature]</i>
Workforce Road Services Planning Division Ph: 02 4960 7570 After Hours Ph : 1300 936 723 Email : trafficplans@workforce.com.au	



2019 TRAFFIC CONTROL PLAN

Legend

- North Bound Traffic
- South Bound Traffic
- Event Parking Area
- Event Area



Concept Vehicle Movement Plan

Destination Event Bump-in Period

NOTES:

1. Opening of event off-ramp to be undertaken utilizing a "Rolling Blockade" traffic control operation to minimize impact on pacific hwy traffic and reduce set-up time.
2. Event off-ramp to be opened only for period of event BUMP-IN period
3. Emergency Vehicles , Staff & Performers access via access 2
4. Contingency access via access 3
5. Interaction between local traffic from Grays Lane & event traffic is kept to a minimum.

Revisions	No:	By:	Date:	Description:	Appr:
	1	SD	06/09/18	Issued for Implementation	PI
	2	SD	18/09/18	Amendments As Per MA	PI
	3				
	4				
	5				
	6				

Original Size A3 This TCP is not to scale

Disclaimer:
This guidance scheme is for Traffic Management purposes only. Workforce Road Services disclaims all responsibility and all liability (including without limitation, liability in negligence) for all expenses, losses, damages and costs you might incur as a result of the information being inaccurate or incomplete in any way, and for any reason. This plan is drawn in accordance with the TCAMS manual.

Client Contact: Brendan Meek
Contact Number: 0411 207 011



Job Location: Pacific Hwy Tyagarah	Work Activity: Bump In Plan
Client: Blues Festival Pty Ltd	Drawing Number: WRS-TCP-15294 V2
Drawn By: Steve Duck	Prepare Work Zone Number: 0027386365
Approved By: Peter Ingram	Prepare Work Zone Number: 0030163634
Exp Date: 21st Nov 2018	Signed:
Exp Date: 5th April 2019	Signed:
Workforce Road Services Planning Division Ph: 02 4960 7570 After Hours Ph : 1300 936 723 Email : trafficplans@workforce.com.au	

