

Copyright © Whereis® Registered Trademark of Sensis Pty Ltd.

LOCALITY PLAN  
NOT TO SCALE

PRELIMINARY



MOBILE NETWORK SITE 288489  
BRUNSWICK HEADS OLD PACIFIC HWY  
SITE ACCESS AND LOCALITY PLAN  
314 PLAN 755692 OLD PACIFIC HWY, BRUNSWICK HEADS, NSW 2483

DWG  
NO.

N109803

SHT  
NO.

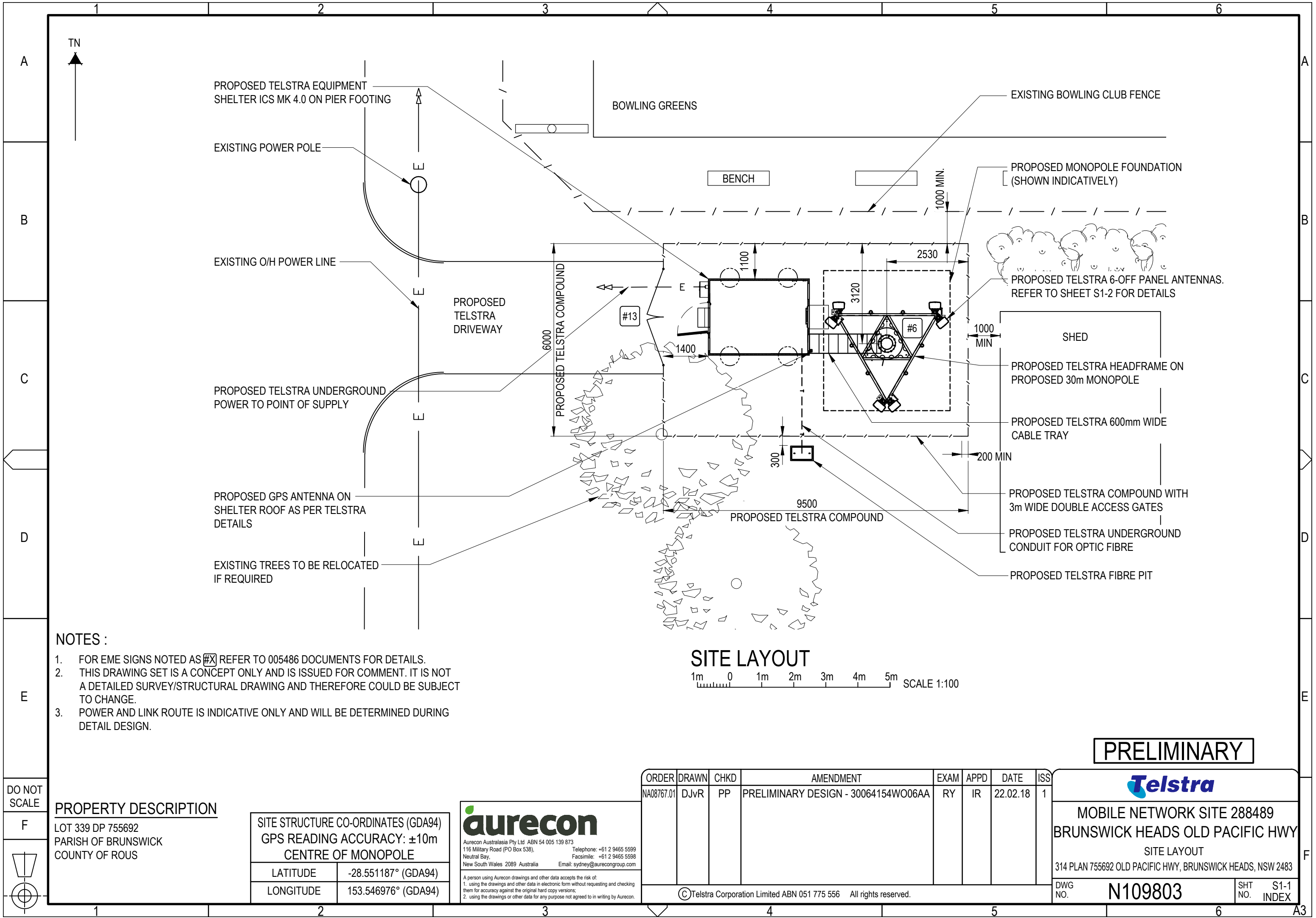
S1  
INDEX



Aurecon Australasia Pty Ltd ABN 54 005 139 873  
116 Military Road (PO Box 536),  
Neutral Bay,  
New South Wales 2089 Australia  
Telephone: +61 2 9465 5599  
Facsimile: +61 2 9465 5598  
Email: sydney@aurecongroup.com

A person using Aurecon drawings and other data accepts the risk of:  
1. using the drawings and other data in electronic form without requesting and checking them for accuracy against the original hard copy versions;  
2. using the drawings or other data for any purpose not agreed to in writing by Aurecon.

©Telstra Corporation Limited ABN 051 775 556 All rights reserved.



- NOTES :
- FOR EME SIGNS NOTED AS #X REFER TO 005486 DOCUMENTS FOR DETAILS.
  - THIS DRAWING SET IS A CONCEPT ONLY AND IS ISSUED FOR COMMENT. IT IS NOT A DETAILED SURVEY/STRUCTURAL DRAWING AND THEREFORE COULD BE SUBJECT TO CHANGE.
  - POWER AND LINK ROUTE IS INDICATIVE ONLY AND WILL BE DETERMINED DURING DETAIL DESIGN.

PROPERTY DESCRIPTION

LOT 339 DP 755692  
PARISH OF BRUNSWICK  
COUNTY OF ROUS

SITE STRUCTURE CO-ORDINATES (GDA94) GPS READING ACCURACY: ±10m CENTRE OF MONOPOLE	
LATITUDE	-28.551187° (GDA94)
LONGITUDE	153.546976° (GDA94)



Aurecon Australasia Pty Ltd ABN 54 005 139 873  
116 Military Road (PO Box 536),  
Neutral Bay,  
New South Wales 2089 Australia  
Telephone: +61 2 9465 5599  
Facsimile: +61 2 9465 5598  
Email: sydney@aurecongroup.com

A person using Aurecon drawings and other data accepts the risk of:  
1. using the drawings and other data in electronic form without requesting and checking them for accuracy against the original hard copy versions;  
2. using the drawings or other data for any purpose not agreed to in writing by Aurecon.

ORDER	DRAWN	CHKD	AMENDMENT	EXAM	APPD	DATE	ISS
NA08767.01	DJvR	PP	PRELIMINARY DESIGN - 30064154WO06AA	RY	IR	22.02.18	1

©Telstra Corporation Limited ABN 051 775 556 All rights reserved.

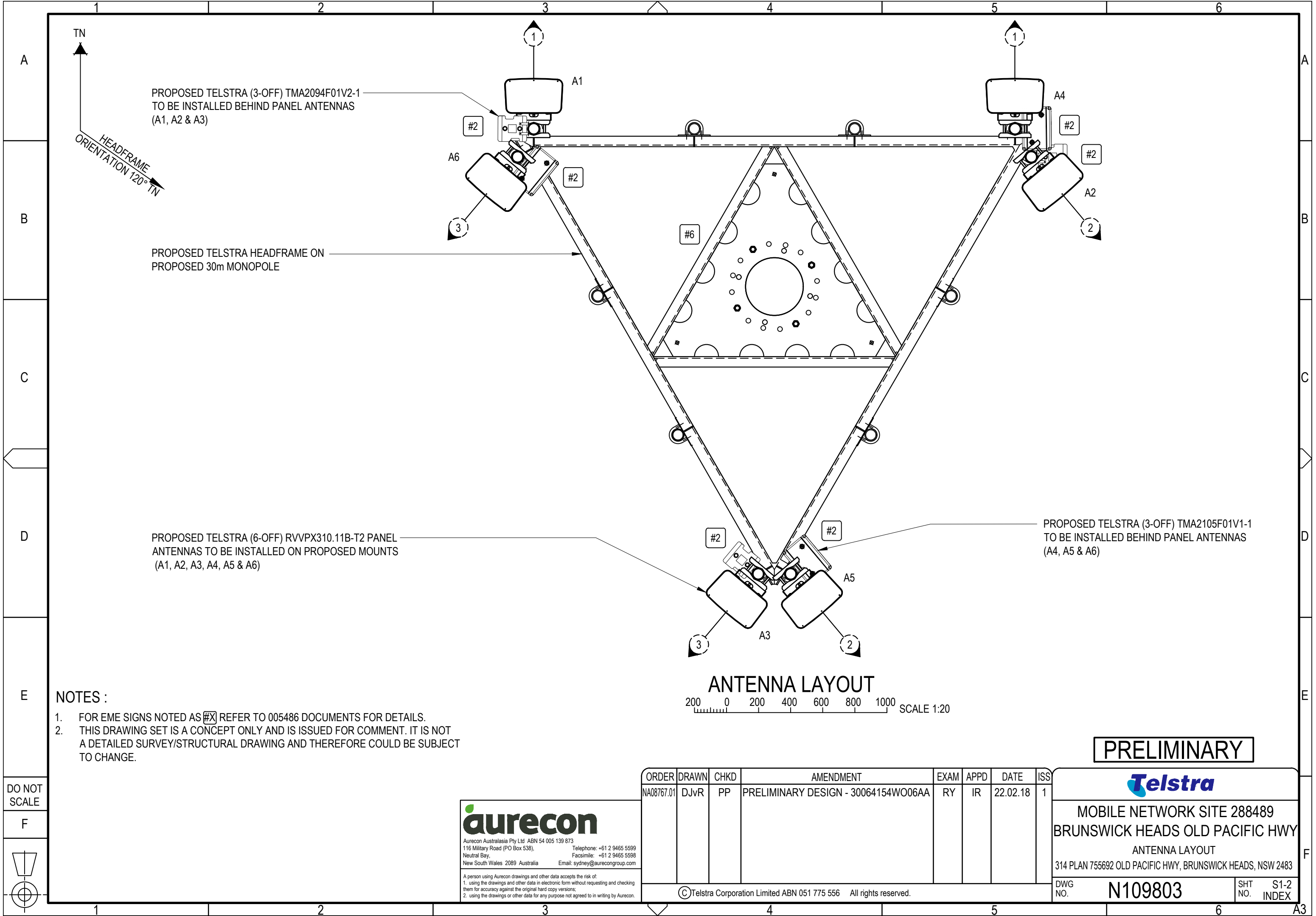
PRELIMINARY



MOBILE NETWORK SITE 288489  
BRUNSWICK HEADS OLD PACIFIC HWY  
SITE LAYOUT  
314 PLAN 755692 OLD PACIFIC HWY, BRUNSWICK HEADS, NSW 2483

DWG NO. N109803

SHT NO. S1-1  
INDEX



PROPOSED TELSTRA (3-OFF) TMA2094F01V2-1  
TO BE INSTALLED BEHIND PANEL ANTENNAS  
(A1, A2 & A3)

PROPOSED TELSTRA HEADFRAME ON  
PROPOSED 30m MONOPOLE

PROPOSED TELSTRA (6-OFF) RVVPX310.11B-T2 PANEL  
ANTENNAS TO BE INSTALLED ON PROPOSED MOUNTS  
(A1, A2, A3, A4, A5 & A6)

PROPOSED TELSTRA (3-OFF) TMA2105F01V1-1  
TO BE INSTALLED BEHIND PANEL ANTENNAS  
(A4, A5 & A6)

ANTENNA LAYOUT

200 0 200 400 600 800 1000 SCALE 1:20

NOTES :

- 1. FOR EME SIGNS NOTED AS #X REFER TO 005486 DOCUMENTS FOR DETAILS.
- 2. THIS DRAWING SET IS A CONCEPT ONLY AND IS ISSUED FOR COMMENT. IT IS NOT A DETAILED SURVEY/STRUCTURAL DRAWING AND THEREFORE COULD BE SUBJECT TO CHANGE.

PRELIMINARY



MOBILE NETWORK SITE 288489  
BRUNSWICK HEADS OLD PACIFIC HWY  
ANTENNA LAYOUT  
314 PLAN 755692 OLD PACIFIC HWY, BRUNSWICK HEADS, NSW 2483

DWG NO. N109803 SHT NO. S1-2 INDEX

**aurecon**  
Aurecon Australasia Pty Ltd ABN 54 005 139 873  
116 Military Road (PO Box 536), Telephone: +61 2 9465 5599  
Neutral Bay, Facsimile: +61 2 9465 5598  
New South Wales 2089 Australia Email: sydney@aurecongroup.com

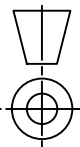
A person using Aurecon drawings and other data accepts the risk of:  
1. using the drawings and other data in electronic form without requesting and checking them for accuracy against the original hard copy versions;  
2. using the drawings or other data for any purpose not agreed to in writing by Aurecon.

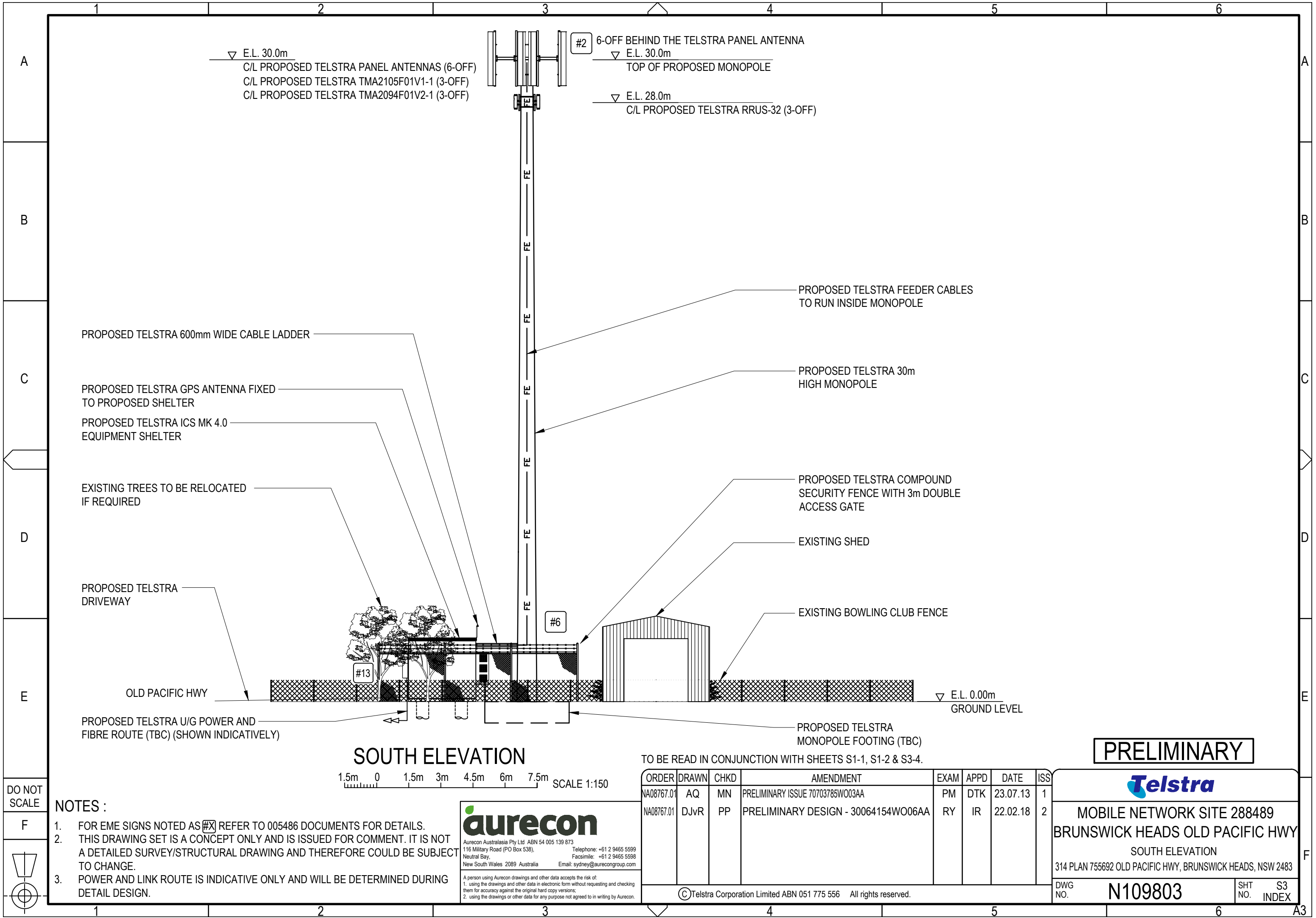
ORDER	DRAWN	CHKD	AMENDMENT	EXAM	APPD	DATE	ISS
NA08767.01	DJvR	PP	PRELIMINARY DESIGN - 30064154WO06AA	RY	IR	22.02.18	1

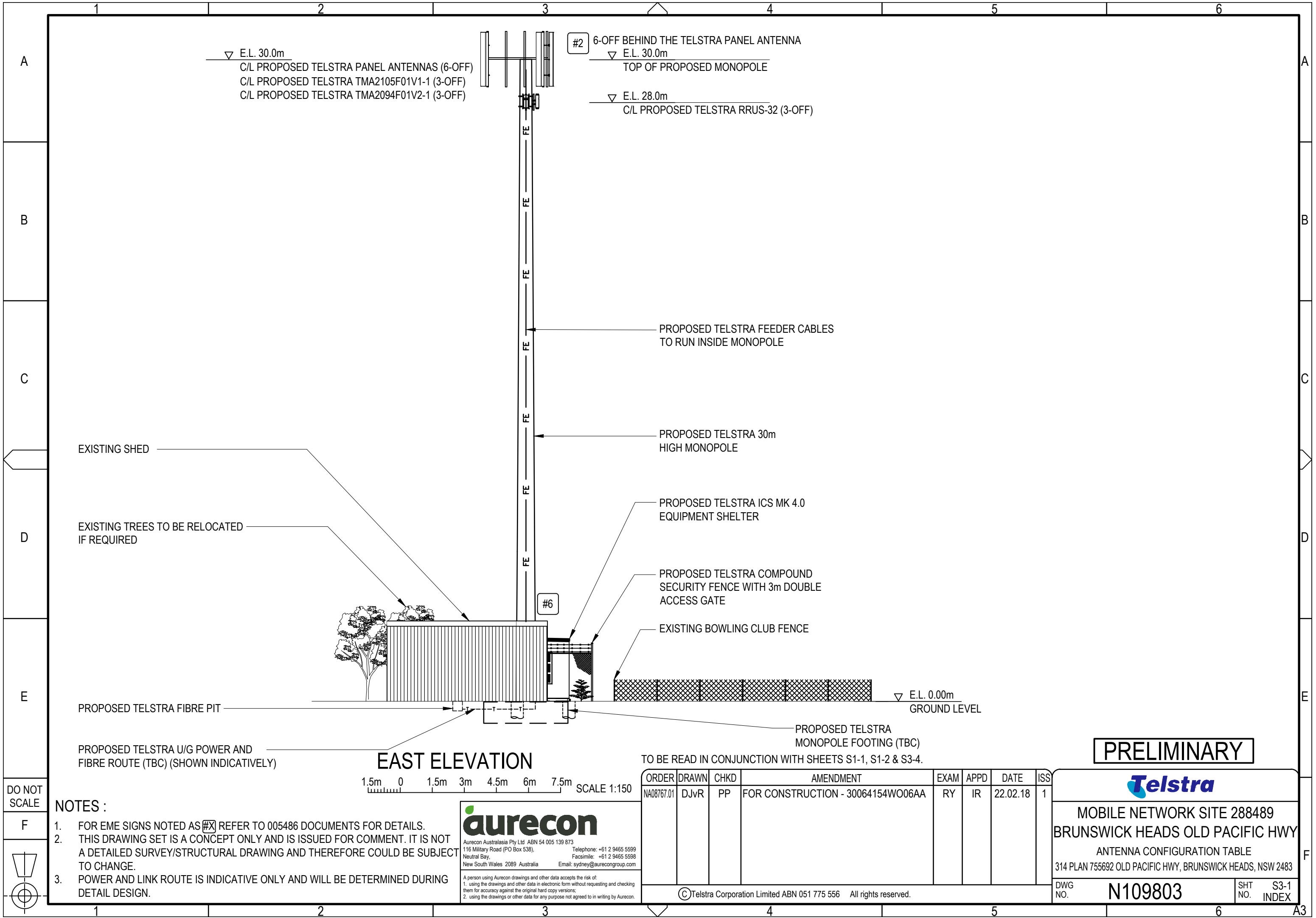
©Telstra Corporation Limited ABN 051 775 556 All rights reserved.

DO NOT  
SCALE

F

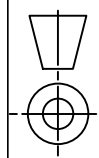






DO NOT  
SCALE

F



- NOTES :
- FOR EME SIGNS NOTED AS #X REFER TO 005486 DOCUMENTS FOR DETAILS.
  - THIS DRAWING SET IS A CONCEPT ONLY AND IS ISSUED FOR COMMENT. IT IS NOT A DETAILED SURVEY/STRUCTURAL DRAWING AND THEREFORE COULD BE SUBJECT TO CHANGE.
  - POWER AND LINK ROUTE IS INDICATIVE ONLY AND WILL BE DETERMINED DURING DETAIL DESIGN.

**aurecon**  
Aurecon Australasia Pty Ltd ABN 54 005 139 873  
116 Military Road (PO Box 536), Telephone: +61 2 9465 5599  
Neutral Bay, Facsimile: +61 2 9465 5598  
New South Wales 2089 Australia Email: sydney@aurecongroup.com

A person using Aurecon drawings and other data accepts the risk of:  
1. using the drawings and other data in electronic form without requesting and checking them for accuracy against the original hard copy versions;  
2. using the drawings or other data for any purpose not agreed to in writing by Aurecon.

TO BE READ IN CONJUNCTION WITH SHEETS S1-1, S1-2 & S3-4.

ORDER	DRAWN	CHKD	AMENDMENT	EXAM	APPD	DATE	ISS
NA08767.01	DJvR	PP	FOR CONSTRUCTION - 30064154WO06AA	RY	IR	22.02.18	1

©Telstra Corporation Limited ABN 051 775 556 All rights reserved.

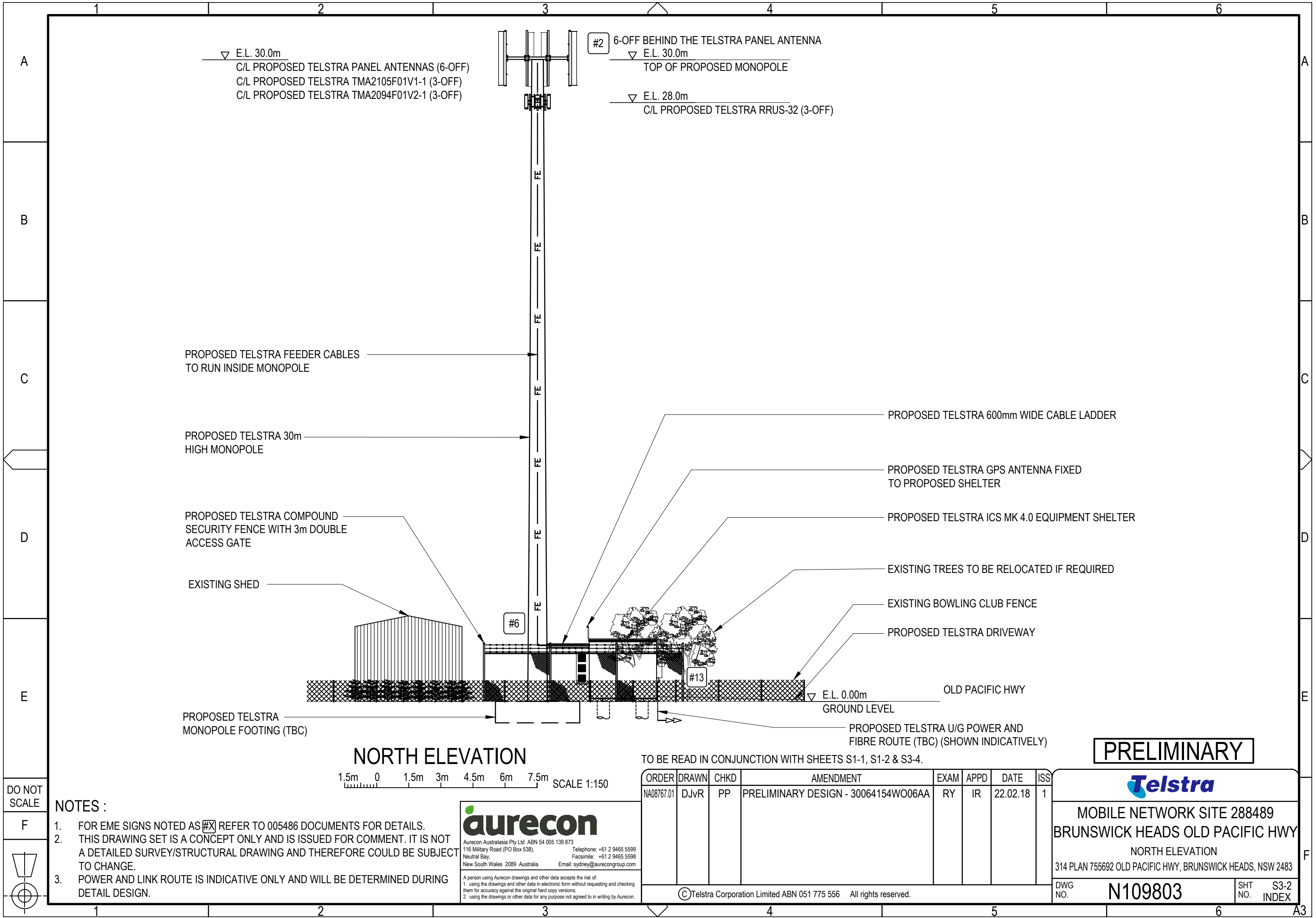
PRELIMINARY

**Telstra**

MOBILE NETWORK SITE 288489  
BRUNSWICK HEADS OLD PACIFIC HWY  
ANTENNA CONFIGURATION TABLE  
314 PLAN 755692 OLD PACIFIC HWY, BRUNSWICK HEADS, NSW 2483

DWG NO. **N109803** SHT NO. S3-1 INDEX





DO NOT  
SCALE

F

- NOTES :
- FOR EME SIGNS NOTED AS #X REFER TO 005486 DOCUMENTS FOR DETAILS.
  - THIS DRAWING SET IS A CONCEPT ONLY AND IS ISSUED FOR COMMENT. IT IS NOT A DETAILED SURVEY/STRUCTURAL DRAWING AND THEREFORE COULD BE SUBJECT TO CHANGE.
  - POWER AND LINK ROUTE IS INDICATIVE ONLY AND WILL BE DETERMINED DURING DETAIL DESIGN.

**aurecon**

Aurecon Australasia Pty Ltd ABN 54 005 139 873  
116 Military Road (PO Box 536),  
Neutral Bay, New South Wales 2089 Australia  
Telephone: +61 2 9465 5599  
Facsimile: +61 2 9465 5598  
Email: sydney@aurecongroup.com

A person using Aurecon drawings and other data accepts the risk of:  
1. using the drawings and other data in electronic form without requesting and checking them for accuracy against the original hard copy versions;  
2. using the drawings or other data for any purpose not agreed to in writing by Aurecon.

TO BE READ IN CONJUNCTION WITH SHEETS S1-1, S1-2 & S3-4.

ORDER	DRAWN	CHKD	AMENDMENT	EXAM	APPD	DATE	ISS
NA08767.01	DJvR	PP	PRELIMINARY DESIGN - 30064154WO06AA	RY	IR	22.02.18	1

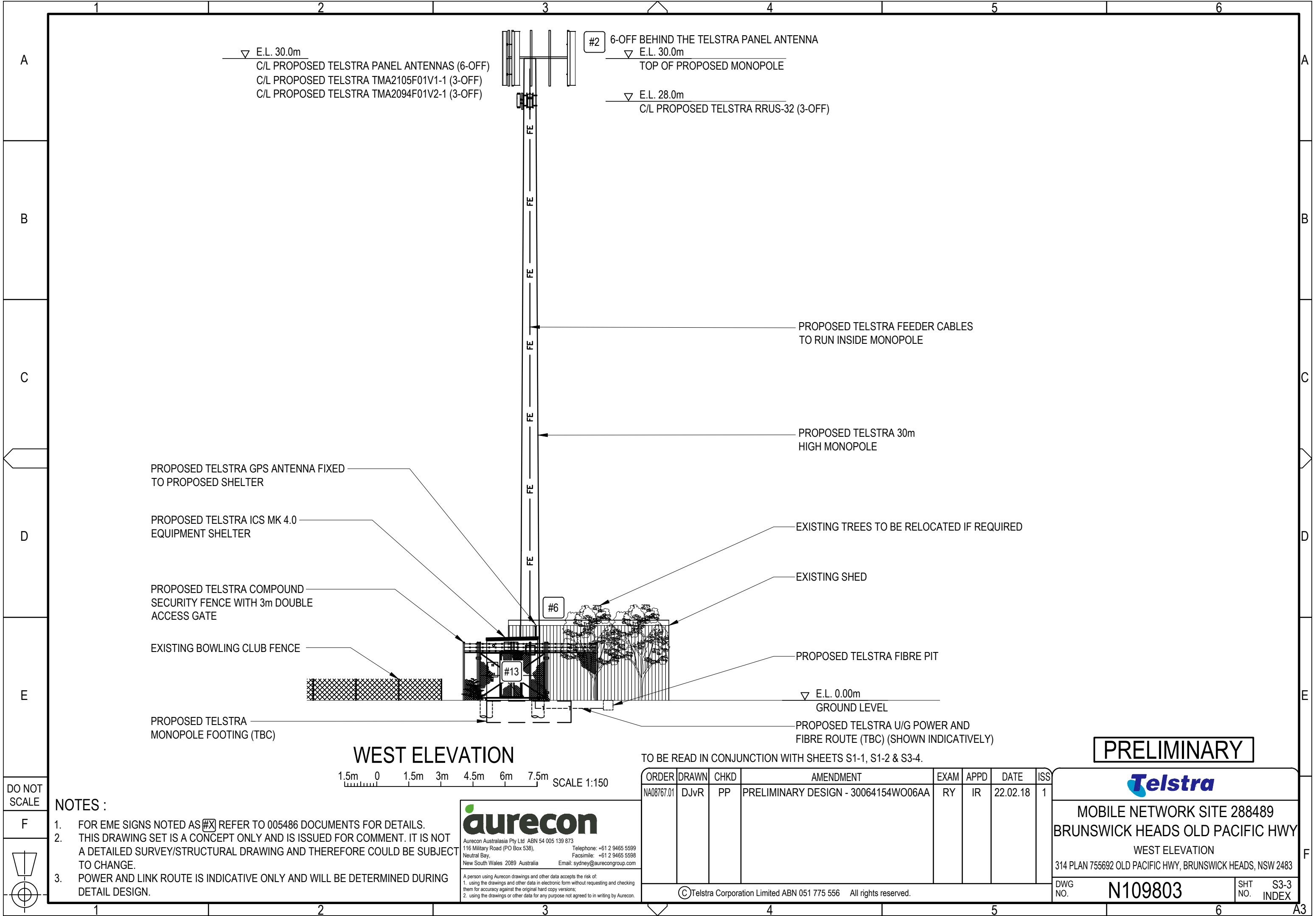
©Telstra Corporation Limited ABN 051 775 556 All rights reserved.

PRELIMINARY

**Telstra**

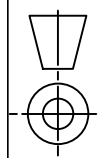
MOBILE NETWORK SITE 288489  
BRUNSWICK HEADS OLD PACIFIC HWY  
NORTH ELEVATION  
314 PLAN 755692 OLD PACIFIC HWY, BRUNSWICK HEADS, NSW 2483

DWG NO. **N109803** SHT NO. S3-2 INDEX



DO NOT  
SCALE

F



- NOTES :
- FOR EME SIGNS NOTED AS #X REFER TO 005486 DOCUMENTS FOR DETAILS.
  - THIS DRAWING SET IS A CONCEPT ONLY AND IS ISSUED FOR COMMENT. IT IS NOT A DETAILED SURVEY/STRUCTURAL DRAWING AND THEREFORE COULD BE SUBJECT TO CHANGE.
  - POWER AND LINK ROUTE IS INDICATIVE ONLY AND WILL BE DETERMINED DURING DETAIL DESIGN.



Aurecon Australasia Pty Ltd ABN 54 005 139 873  
116 Military Road (PO Box 536),  
Neutral Bay,  
New South Wales 2089 Australia  
Telephone: +61 2 9465 5599  
Facsimile: +61 2 9465 5598  
Email: sydney@aurecongroup.com

A person using Aurecon drawings and other data accepts the risk of:  
1. using the drawings and other data in electronic form without requesting and checking them for accuracy against the original hard copy versions;  
2. using the drawings or other data for any purpose not agreed to in writing by Aurecon.

TO BE READ IN CONJUNCTION WITH SHEETS S1-1, S1-2 & S3-4.

ORDER	DRAWN	CHKD	AMENDMENT	EXAM	APPD	DATE	ISS
NA08767.01	DJvR	PP	PRELIMINARY DESIGN - 30064154WO06AA	RY	IR	22.02.18	1

©Telstra Corporation Limited ABN 051 775 556 All rights reserved.

PRELIMINARY



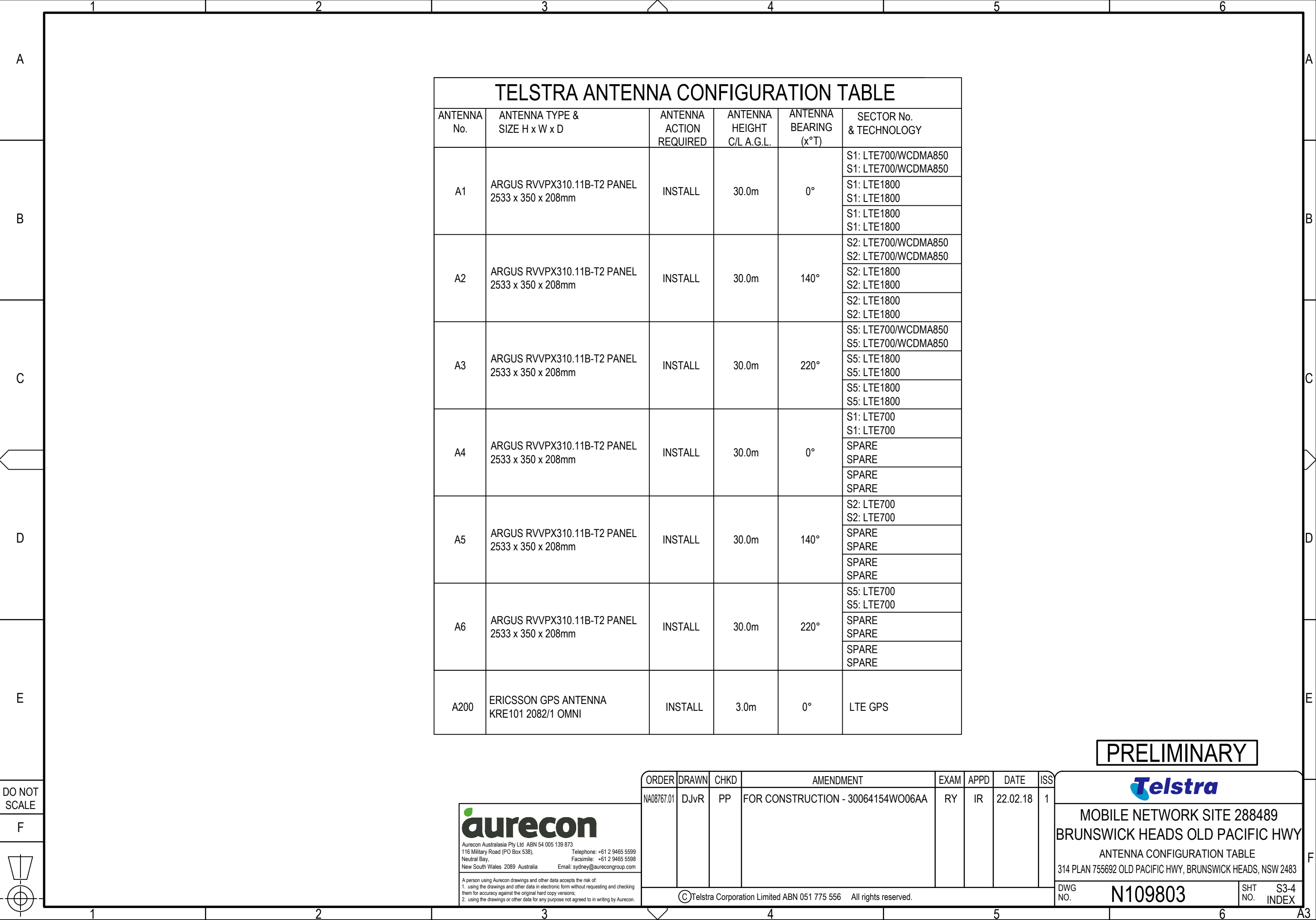
MOBILE NETWORK SITE 288489  
BRUNSWICK HEADS OLD PACIFIC HWY  
WEST ELEVATION  
314 PLAN 755692 OLD PACIFIC HWY, BRUNSWICK HEADS, NSW 2483

DWG NO. N109803

SHT NO. S3-3  
INDEX

F

A3



TELSTRA ANTENNA CONFIGURATION TABLE					
ANTENNA No.	ANTENNA TYPE & SIZE H x W x D	ANTENNA ACTION REQUIRED	ANTENNA HEIGHT C/L A.G.L.	ANTENNA BEARING (x°T)	SECTOR No. & TECHNOLOGY
A1	ARGUS RVVPX310.11B-T2 PANEL 2533 x 350 x 208mm	INSTALL	30.0m	0°	S1: LTE700/WCDMA850 S1: LTE700/WCDMA850
					S1: LTE1800 S1: LTE1800
					S1: LTE1800 S1: LTE1800
					S1: LTE1800 S1: LTE1800
A2	ARGUS RVVPX310.11B-T2 PANEL 2533 x 350 x 208mm	INSTALL	30.0m	140°	S2: LTE700/WCDMA850 S2: LTE700/WCDMA850
					S2: LTE1800 S2: LTE1800
					S2: LTE1800 S2: LTE1800
					S2: LTE1800 S2: LTE1800
A3	ARGUS RVVPX310.11B-T2 PANEL 2533 x 350 x 208mm	INSTALL	30.0m	220°	S5: LTE700/WCDMA850 S5: LTE700/WCDMA850
					S5: LTE1800 S5: LTE1800
					S5: LTE1800 S5: LTE1800
					S5: LTE1800 S5: LTE1800
A4	ARGUS RVVPX310.11B-T2 PANEL 2533 x 350 x 208mm	INSTALL	30.0m	0°	S1: LTE700 S1: LTE700
					SPARE SPARE
					SPARE SPARE
					SPARE SPARE
A5	ARGUS RVVPX310.11B-T2 PANEL 2533 x 350 x 208mm	INSTALL	30.0m	140°	S2: LTE700 S2: LTE700
					SPARE SPARE
					SPARE SPARE
					SPARE SPARE
A6	ARGUS RVVPX310.11B-T2 PANEL 2533 x 350 x 208mm	INSTALL	30.0m	220°	S5: LTE700 S5: LTE700
					SPARE SPARE
					SPARE SPARE
					SPARE SPARE
A200	ERICSSON GPS ANTENNA KRE101 2082/1 OMNI	INSTALL	3.0m	0°	LTE GPS

PRELIMINARY

DO NOT SCALE

F

Aurecon Australasia Pty Ltd ABN 54 005 139 873  
116 Military Road (PO Box 536),  
Neutral Bay,  
New South Wales 2089 Australia

Telephone: +61 2 9465 5599  
Facsimile: +61 2 9465 5598  
Email: sydney@aurecongroup.com

A person using Aurecon drawings and other data accepts the risk of:  
1. using the drawings and other data in electronic form without requesting and checking them for accuracy against the original hard copy versions;  
2. using the drawings or other data for any purpose not agreed to in writing by Aurecon.

ORDER	DRAWN	CHKD	AMENDMENT	EXAM	APPD	DATE	ISS
NA08767.01	DJvR	PP	FOR CONSTRUCTION - 30064154WO06AA	RY	IR	22.02.18	1

©Telstra Corporation Limited ABN 051 775 556 All rights reserved.

MOBILE NETWORK SITE 288489  
BRUNSWICK HEADS OLD PACIFIC HWY  
ANTENNA CONFIGURATION TABLE  
314 PLAN 755692 OLD PACIFIC HWY, BRUNSWICK HEADS, NSW 2483

DWG NO.

N109803

SHT NO.

S3-4 INDEX