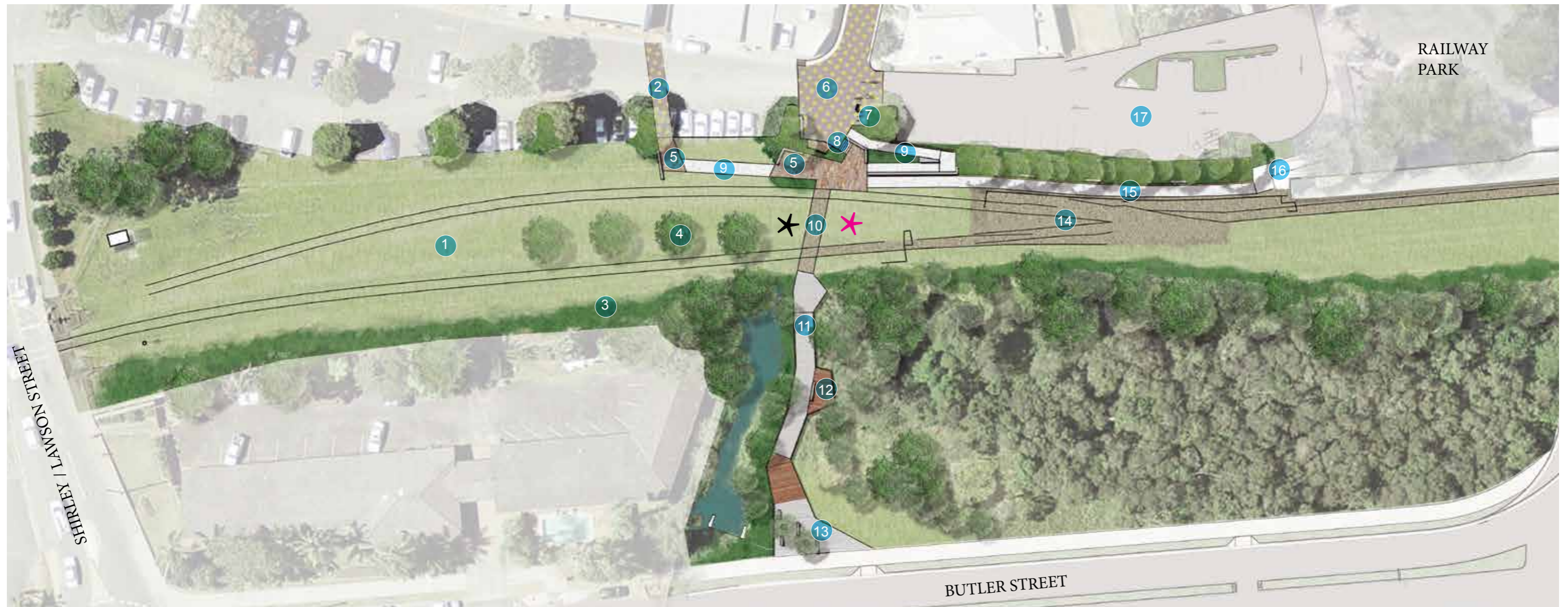




- | | | | | |
|--|---|---|---|--|
| 1. Rail Corridor spaces utilised as passive open space- turf areas bring finished levels to the top of track level | 5. Small paved gathering space under the shade of existing trees | 10. Gravel path through track zone- finished levels of path to be flush with the finished levels of the existing train tracks | 13. Small street level gathering space as the boardwalk connection transitions to Butler Street footpaths | the public open space areas in front of the heritage train station buildings |
| 2. Shared Zones through the car park areas to improve pedestrian links to Surf Alley and the town centre | 6. Shared Zone through car park and into Byron Lane- improving safety and strengthening east/west connections through the town centre | 11. Boardwalk connection to Butler Street and the western side of the Rail Corridor- providing equitable access across the corridor | 14. Areas where gravel fill is used to bring levels flush with the top of the existing tracks | 16. Existing Railway Park boardwalk |
| 3. Planting to areas where maintenance of turf is difficult- also assists with screening adjacent property and fence | 7. Planting area and bike racks | 12. Timber boardwalk and viewing deck areas providing views into existing vegetation area | 15. Concrete path connecting the Rail Corridor crossing path with the Railway Park path network- provides equitable path from the Byron Street alignment to | 17. Future car park upgrade |
| 4. Shade trees to improve open space amenity | 8. Small concrete stair access between car park and train track levels | | | ✳ Artwork location- Option 1 |
| | 9. Concrete paths for equitable access | | | ✳ Artwork location- Option 2 |

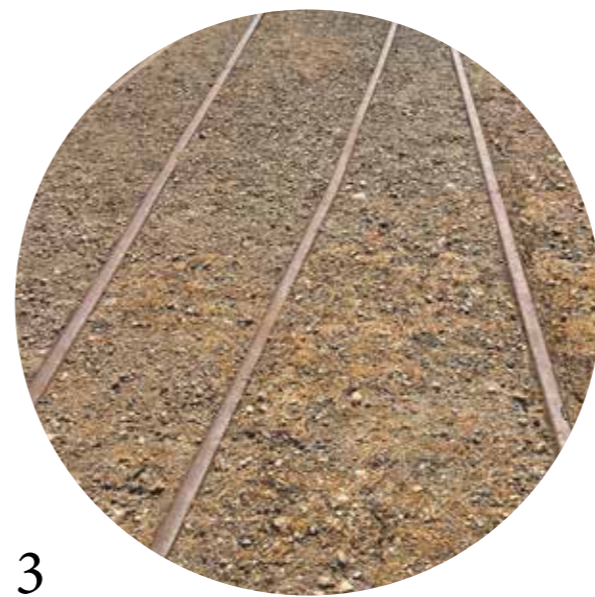




1



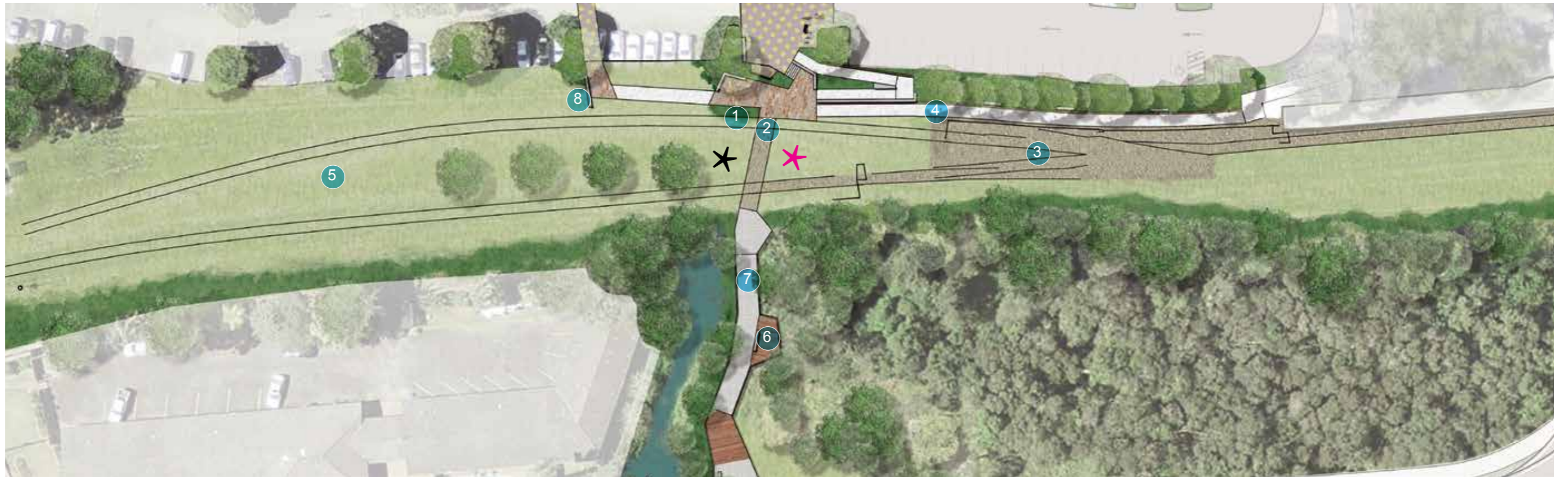
2



3



4



5



6



7



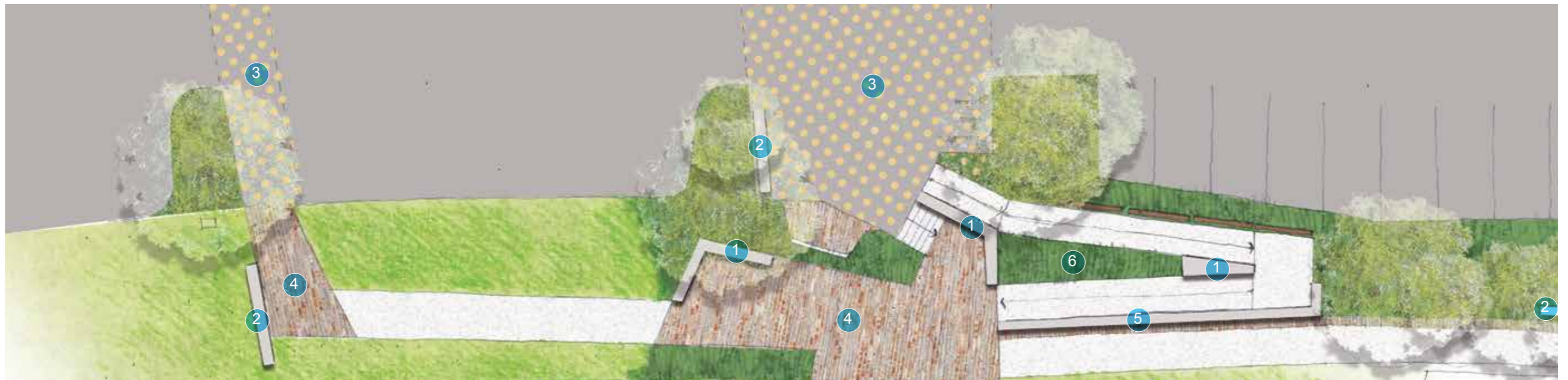
8



1



2



3



4



5



6





BYRON BAY- RAIL CORRIDOR PLAN

