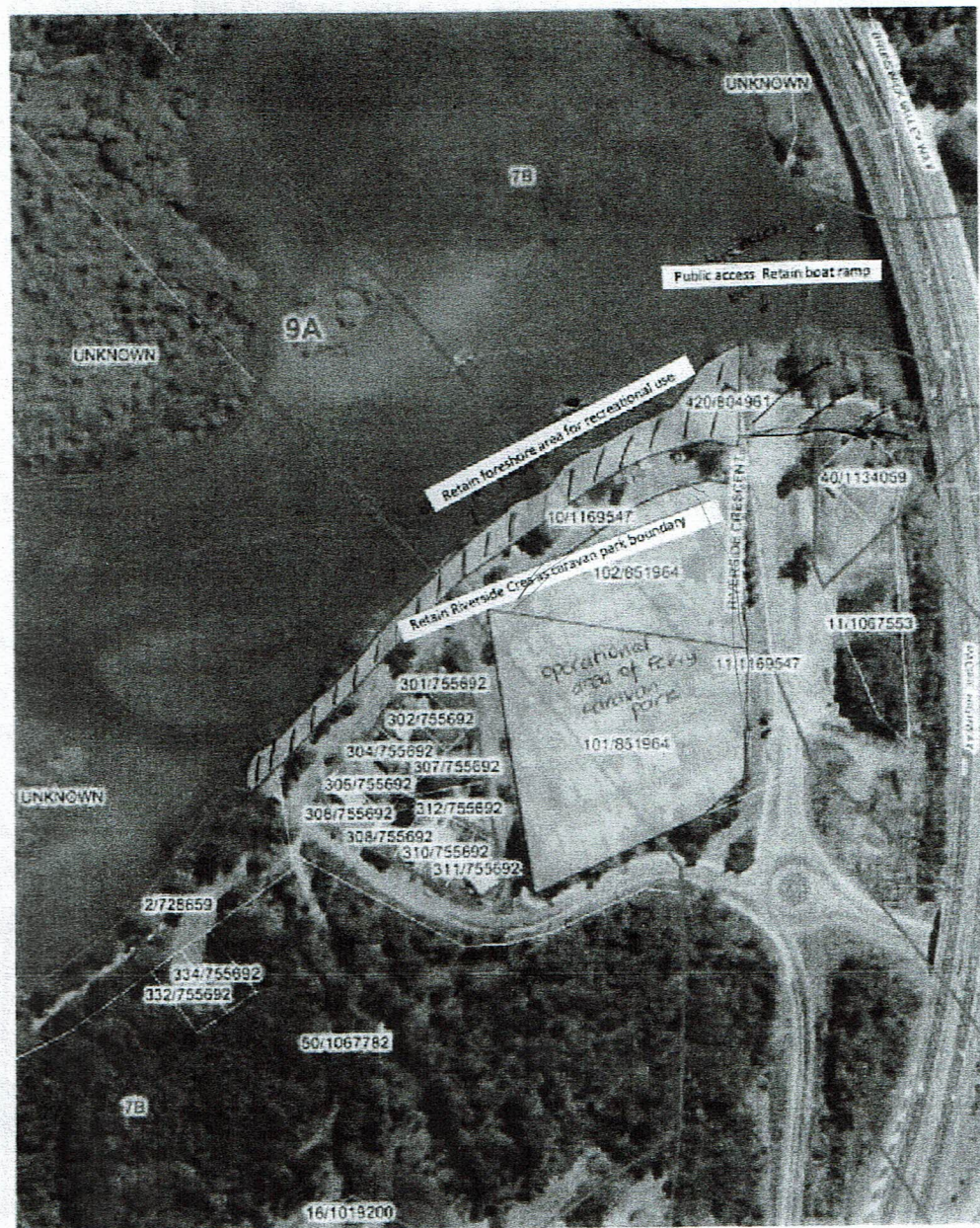


Ferry Reserve Holiday Park

Annexure 11(i)

Lot 101 and 102 DP 851964



Disclaimer: While all reasonable care has been taken to ensure the information contained on this map is up to date and accurate, the user must verify the information contained on this map in their own time or situation. Any reliance placed on such information shall be at the user's sole risk. Please verify the accuracy of the information prior to using it.
Note: The information shown on this map is a copyright of the Byron Shire Council and the NSW Department of Lands.

Scale = 1:2,733
Metres 50 100 150

N

(Scale correct at A4 size)

14/06/2012

Page 3 of 3

Ordinary 8/08/12

It was Council's intention to have all lands along the foreshore retained for public recreation. Lot 420 DP 804961 being the pump station is also within the 'foreshore area' and should be excluded from the operational area of Ferry Reserve Holiday Park. Reasons for its exclusion:

- i) The area is only 10m-15m in width along the foreshore. Over 50% of the grassed foreshore is the former public road reserve known as Riverside Crescent.