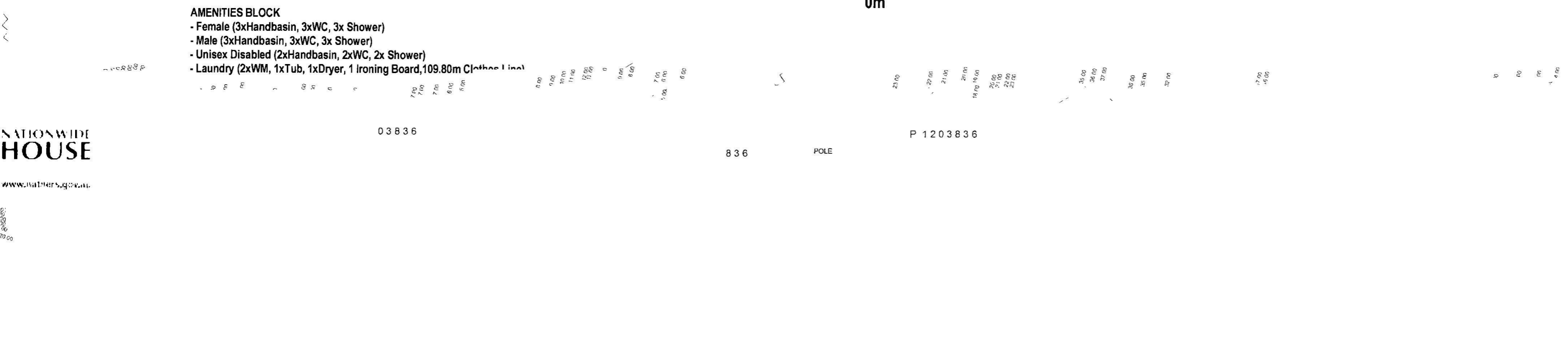


Validation Number M Franklyn = 35 Sites
 Proj. Name: Camp Ground
 Plan Type: SITE DA P1
 Description: **KEY**
 D P 622/35
 Job No.
 Scale: 22/02/18
 Lot 4, DP 874348 & Lot 5 DP 1203836
 PROPOSED CAMP GROUND, CABINS x 12, KIOSK SITE OFFICE, DAY SPA,
 AMENITIES BUILDINGS, NEW DWELLING AND NEW ROAD ACCESS
 NE 1007 COOLAMON SCENIC DRV, MURUMBidgee

12
 D P 622735
 (ZOHU HOUSE)
 YOGA HALL
 PLANS BY
 WRIGHT
 6
 D P 258075
 3
 D P 587391
 AMENITIES
 BUILDING 4



THE BLACK TEMPLE - YOGA AND MEDITATION CENTRE

1897 COOLAMON SCENIC DRIVE, MULLUMBIMBY, NSW

Sheet List

Sheet Number	Sheet Name	Current Revision
TP000	COVER SHEET AND AREAS	
TP001	FINISH SCHEDULES	
TP002	SITE PLAN	
TP003	3D VIEWS	
TP004	FLOOR PLAN	
TP005	ELEVATION EAST	
TP006	ELEVATION NORTH	
TP007	ELEVATION WEST	
TP008	ELEVATION SOUTH	
TP009	SECTION AA	
TP010	SECTION AA1	
TP011	SECTION BB	
TP012	SECTION BB1	

AREA SUMMARY	
ONE STOREY YOGA CENTRE	
SITE	16.63 ha
YOGA AND MEDITATION SPACE	363 sqm
MALE AMENITIES	15 sqm
FEMALE AMENITIES	15 sqm
KITCHEN	37 sqm
OUTDOOR DECK	209 sqm
TOTAL INTERNAL	430 sqm
TOTAL OUTDOOR	209 sqm

THE BLACK TEMPLE

COVER SHEET AND AREAS

Scale
Date 22/02/2018

N

Charles Wright Architects

Melbourne Office:
Level 9, Total House, 180 Russell St, Melbourne VIC 3000 T: +61 3 9663 1166 F: +61 3 8080 1630
Port Douglas Office:
Shop 5 - Laxmi Centre, 48 Macrossan St, Port Douglas QLD 4877 T: +61 7 4099 4965
ABN 89 319 653 905 ACN 110 285 008 Email: charles@wrightarchitects.com.au M: +61(0)433 226 501
WEB: www.wrightarchitects.com.au

FINISHES LEGEND / WALL TYPES

GENERAL NOTES

Notes A to concrete:

Class 2 off form finish to all exposed surfaces to architects approval.

Askin Panels

All ASKIN panels metal top and bottom sheets are grade 316 Colorbond stainless steel Range.

Timber Deck and associate battens

19mm Ironbark flooring 3mm gaps unless noted otherwise. **H1 durability timber.**

ROOF FINISHES

- AKN** Askin light weight roof system 200mm thk nom compacted with polythene former and fixing onto steel roof framing system as detailed to manufacturer's specification.

FLOORING

- CN1** Class 2 off form concrete finish with approved waterproof sealing. refer to note for detail info.
- CO1** trowel finish concrete with approved Sika waterproof sealing to new access ramp and landing. refer to specification and schedule for detail info.
- TM** Internal Ironbark timber deck floor on hardwood battens. compact with 100mm ASKIN Mineral Wool Core cladding panels under. and fixing onto steel floor framing system as detailed to manufacturer's specification.
- 1:100 fall to drain to wet area as detailed and manufacturer's specification
- TM2** external Ironbark timber flooring on hardwood battens. 1:200 fall to drain as detailed and manufacturer's specification

WALL FINISHES

- CN1** Class 2 off form concrete finish with approved waterproof sealing. nom for exposed concrete pad footings.
- AKN1** 200mm Askin Mineral Wool Core acoustic partition wall panels, fixed with 200mm thk polythene former and fixing system as manufacturer's specification. refer to details for further info
- AKN2** Askin cladding fixed with 100mm thk polythene former and fixing system as manufacturer's specification. refer to details for further info.
- OP1** Selected Lotus or approved similar, operable wall panels. Rw 34 min, with approved and manufacturer's recommended acoustic seal system as detailed to manufacturer's specification. Finish: Timber Veneer to match joinery. clear painted.
- ST01** 10-20mm selected large sized Calacatta marble stone splashback. refer to internal elevation package for further info
- MI** clear mirror as specified.
- GL-1** double glazed window or door glass panels, Viridian or approved similar. Rw 41 min. nom 6/16gap/8.5. refer to specification and schedule for further info.
- GL-2** 10mm toughen glass balustrade, refer to specification and schedule for further info.

CEILING FINISHES

- AKN** Selected Askin roof bottom metal skin as detailed to manufacturer's specification.

METAL FINISHES

- AL-1** Clear anodised aluminum member, trimmer or frames as specification and schedule detailed.
- SS1** 316 marine grade stainless steel finish.
- MP1** H.D.G. steel truss and framing members. painted as schedule and specification. refer to Structural Engineer for details.

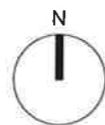
JOINERY FINISHES

- ST01** selected Feature large format Pilbara Marble stone 20mm thick to all splashbacks and benchtops as specified.
- MI** mirror with fixing as specified
- TV** top end Timber veneer (species tba), with 2-pac clear polyurethane satin finish as specified. applied to all bedroom, study and feature joinery
- 2PK** 2- pac white finish to hdr mdf, thickness 19mm as specified. applied to all wet area joinery exposed door, drawer and curved end panels
- SS1** 316 marine grade stainless steel finish.

THE BLACK TEMPLE

FINISH SCHEDULES

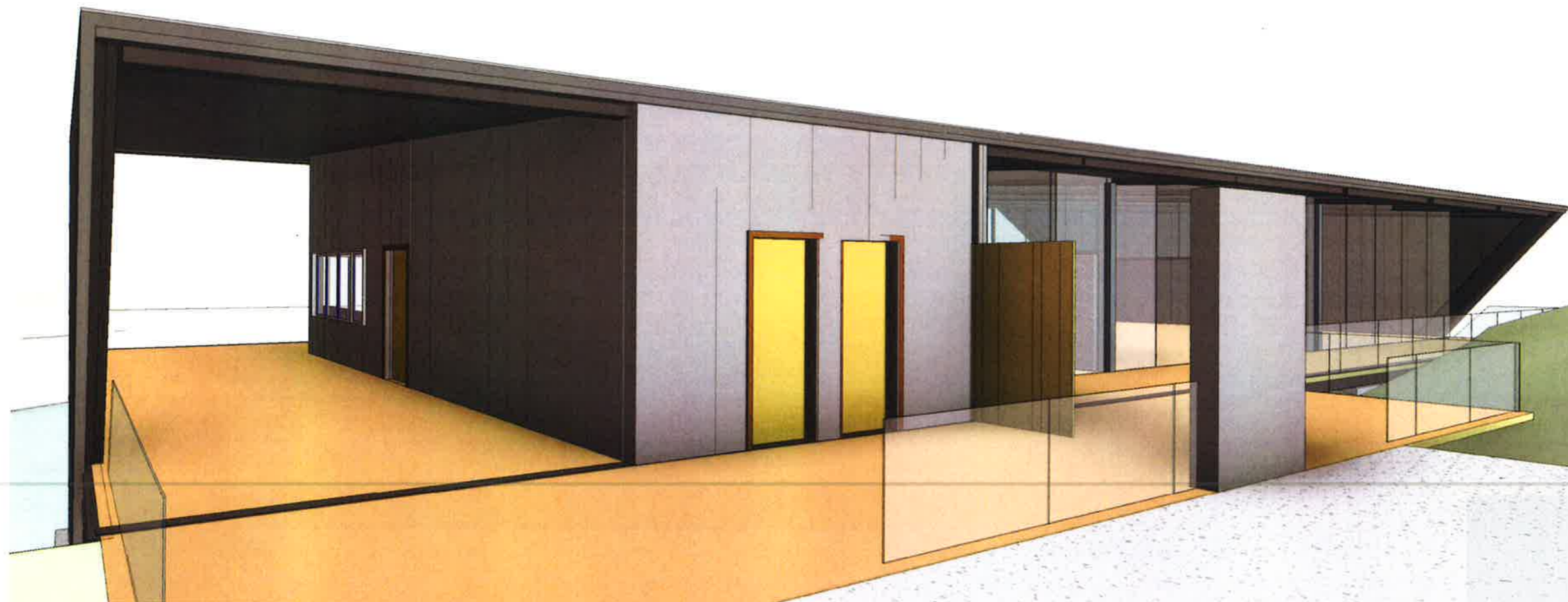
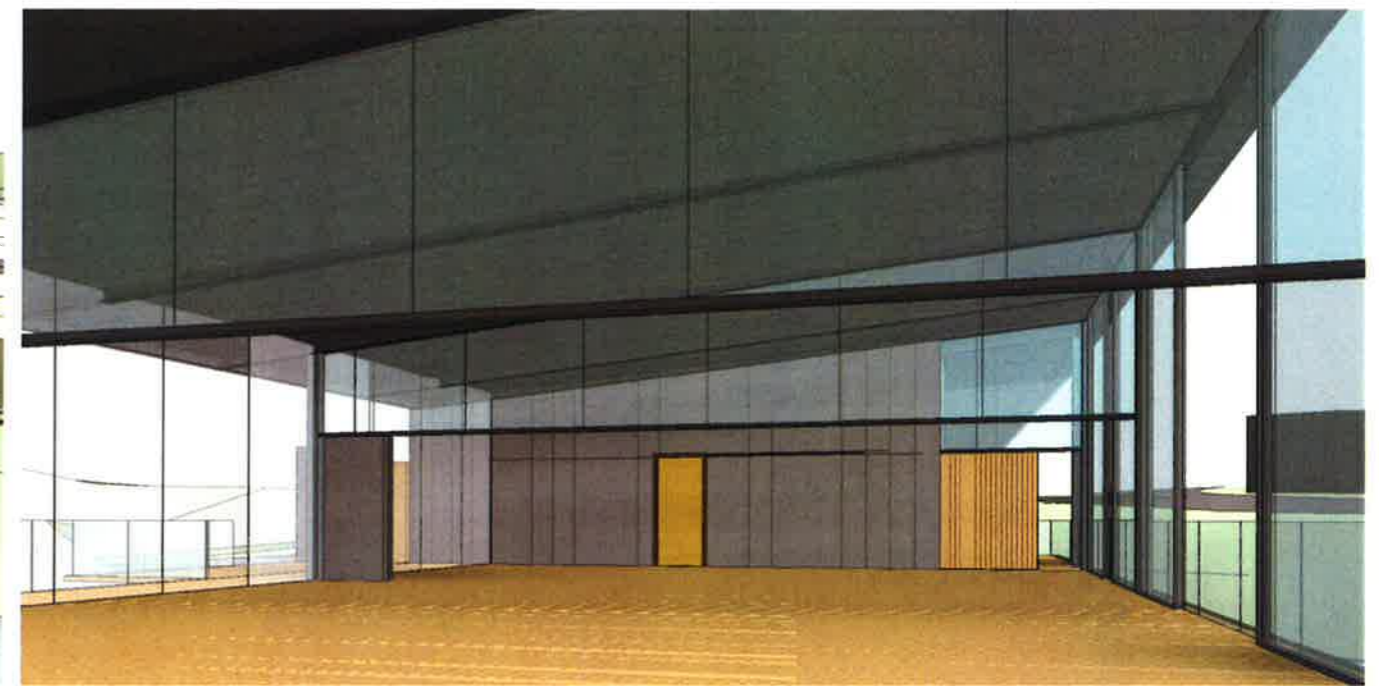
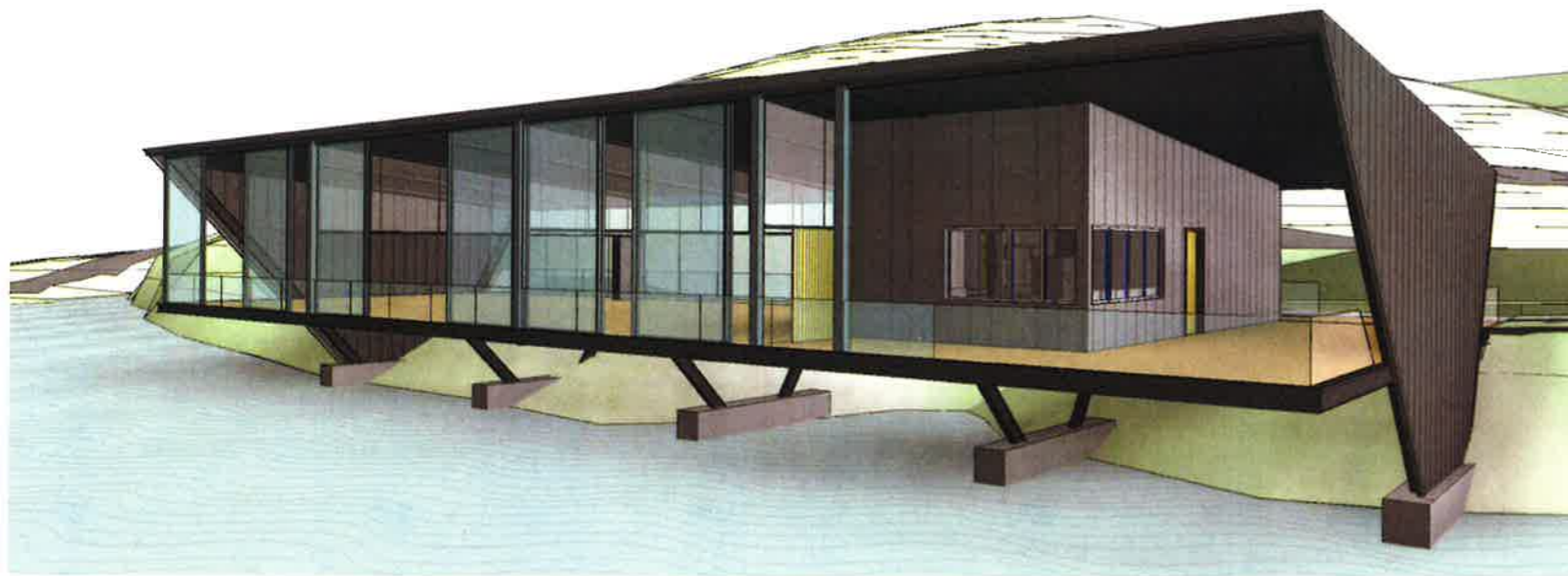
Scale
Date 22/02/2018




Charles Wright Architects

Melbourne Office:
Level 9, Total House, 180 Russell St, Melbourne VIC 3000 T: +61 3 9663 1166 F: +61 3 8080 1630
Port Douglas Office:
Shop 5 - Laxmi Centre, 48 Macrossan St, Port Douglas QLD 4877 T: +61 7 4099 4965
ABN 89 319 653 905 ACN 110 285 008 Email: charles@wrightarchitects.com.au M: +61(0)433 226 501
WEB: www.wrightarchitects.com.au

TP001



THE BLACK TEMPLE

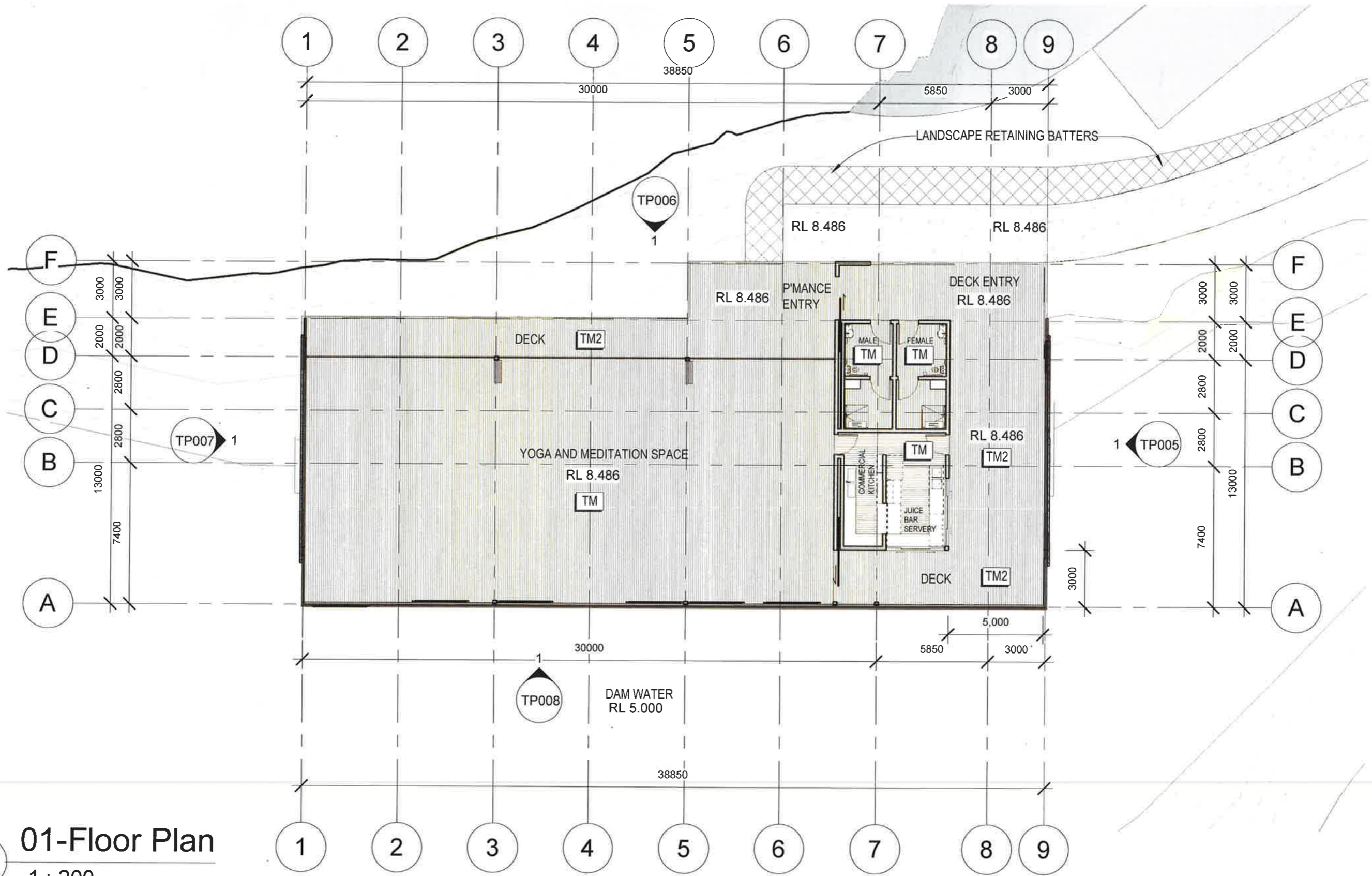
3D VIEWS
 Scale
 Date 22/02/2018



Melbourne Office:
 Level 9, Total House, 180 Russell St, Melbourne VIC 3000
 Port Douglas Office:
 Shop 5 - Laxmi Centre, 48 Macrossan St, Port Douglas QLD 4877
 ABN 89 319 653 905 ACN 110 285 008
 Email: charles@wrightarchitects.com.au
 WEB: www.wrightarchitects.com.au

T: +61 3 9663 1166 F: +61 3 8080 1630
 T: +61 7 4099 4965
 M: +61(0)433 226 501

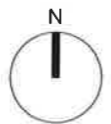
TP003



1 **01-Floor Plan**
1 : 200

THE BLACK TEMPLE

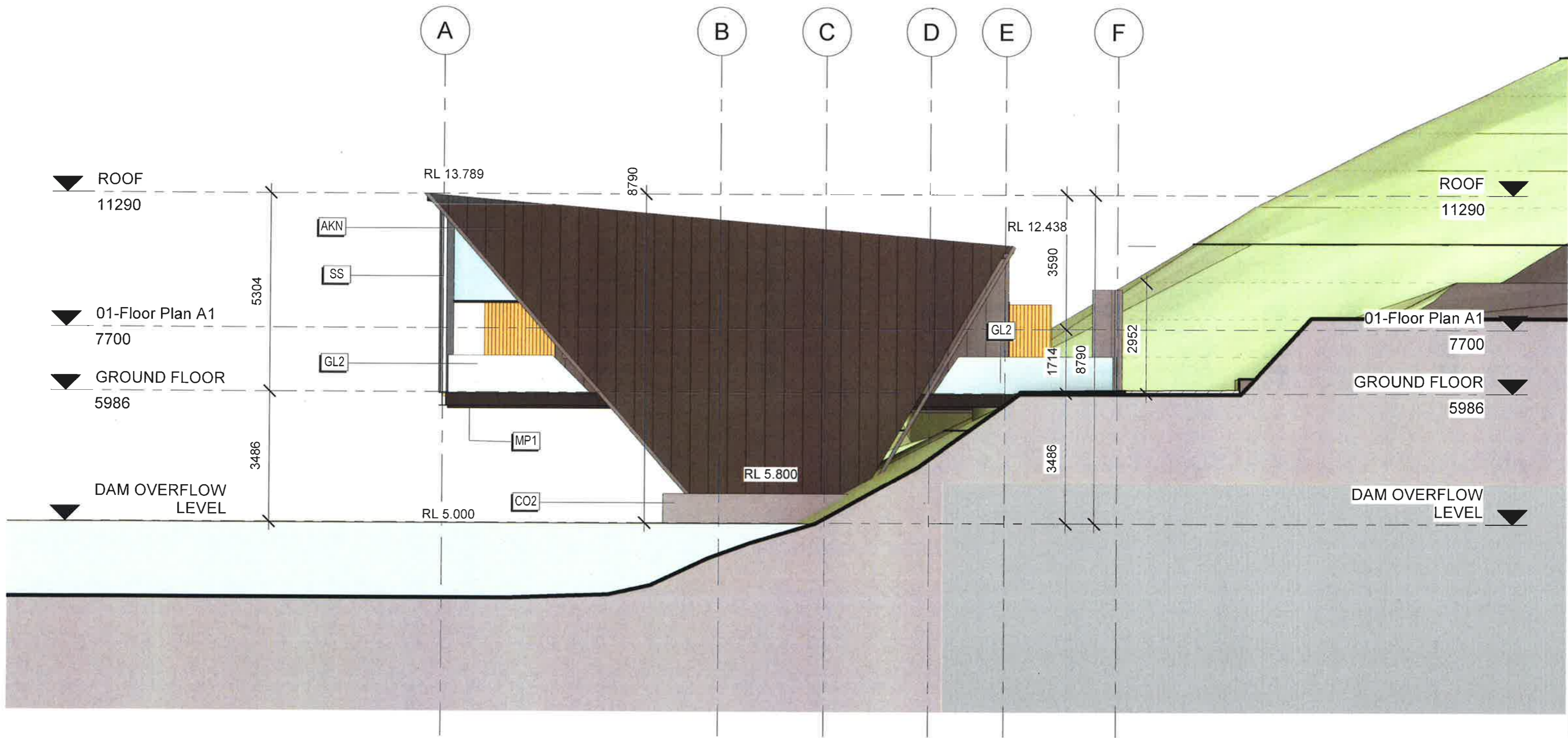
FLOOR PLAN
Scale
Date 22/02/2018



Melbourne Office:
Level 9, Total House, 180 Russell St, Melbourne VIC 3000
Port Douglas Office:
Shop 5 - Laxmi Centre, 48 Macrossan St, Port Douglas QLD 4877
ABN 89 319 653 905 ACN 110 285 008
Email: charles@wrightarchitects.com.au
WEB: www.wrightarchitects.com.au

T: +61 3 9663 1166 F: +61 3 8080 1630
T: +61 7 4099 4965
M: +61(0)433 226 501

TP004



1 ELEVATION - EAST
1 : 100

THE BLACK TEMPLE

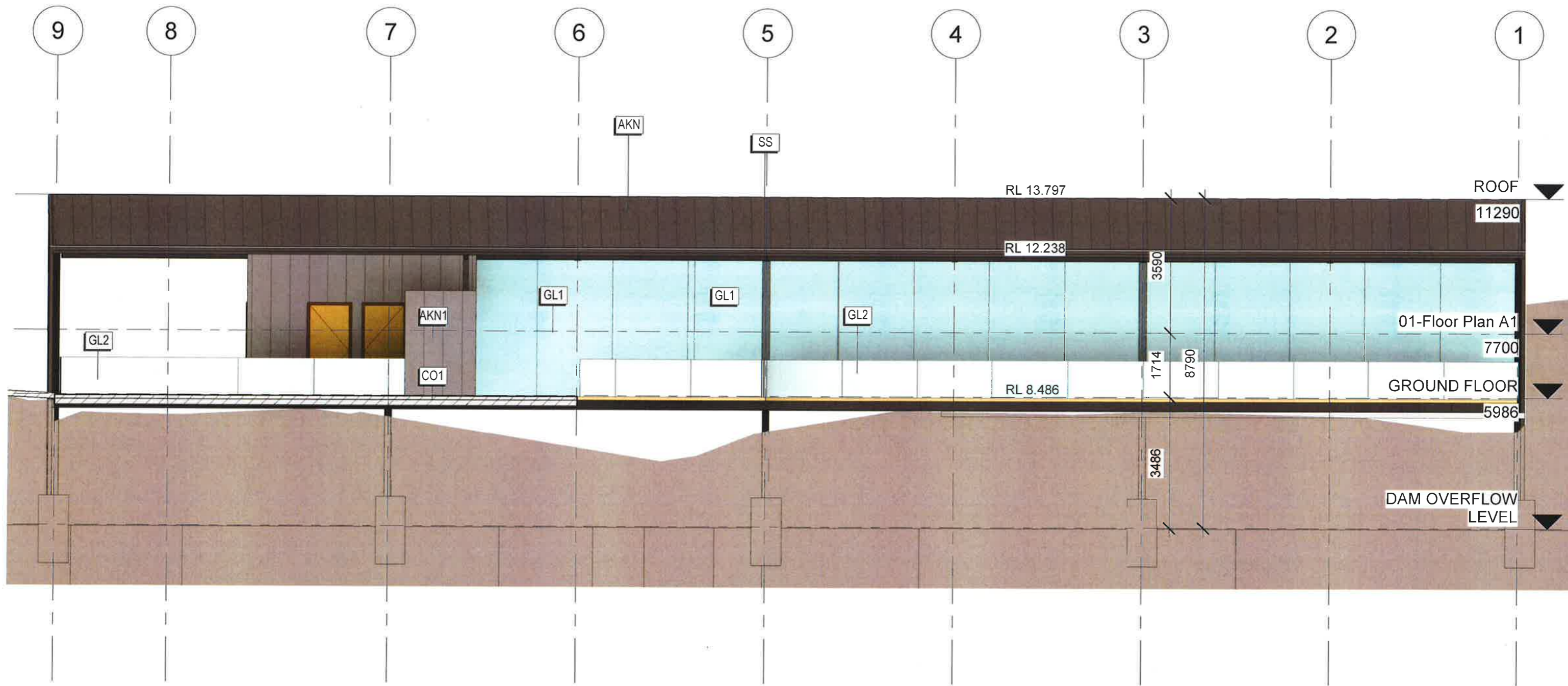
ELEVATION EAST
Scale
Date 22/02/2018



Melbourne Office:
Level 9, Total House, 180 Russell St, Melbourne VIC 3000
Port Douglas Office:
Shop 5 - Laxmi Centre, 48 Macrossan St, Port Douglas QLD 4877
ABN 89 319 653 905 ACN 110 285 008
Email: charles@wrightarchitects.com.au
WEB: www.wrightarchitects.com.au

T: +61 3 9663 1166 F: + 61 3 8080 1630
T: +61 7 4099 4965
M: +61(0)433 226 501

TP005



1 **ELEVATION - NORTH**
1 : 100

THE BLACK TEMPLE

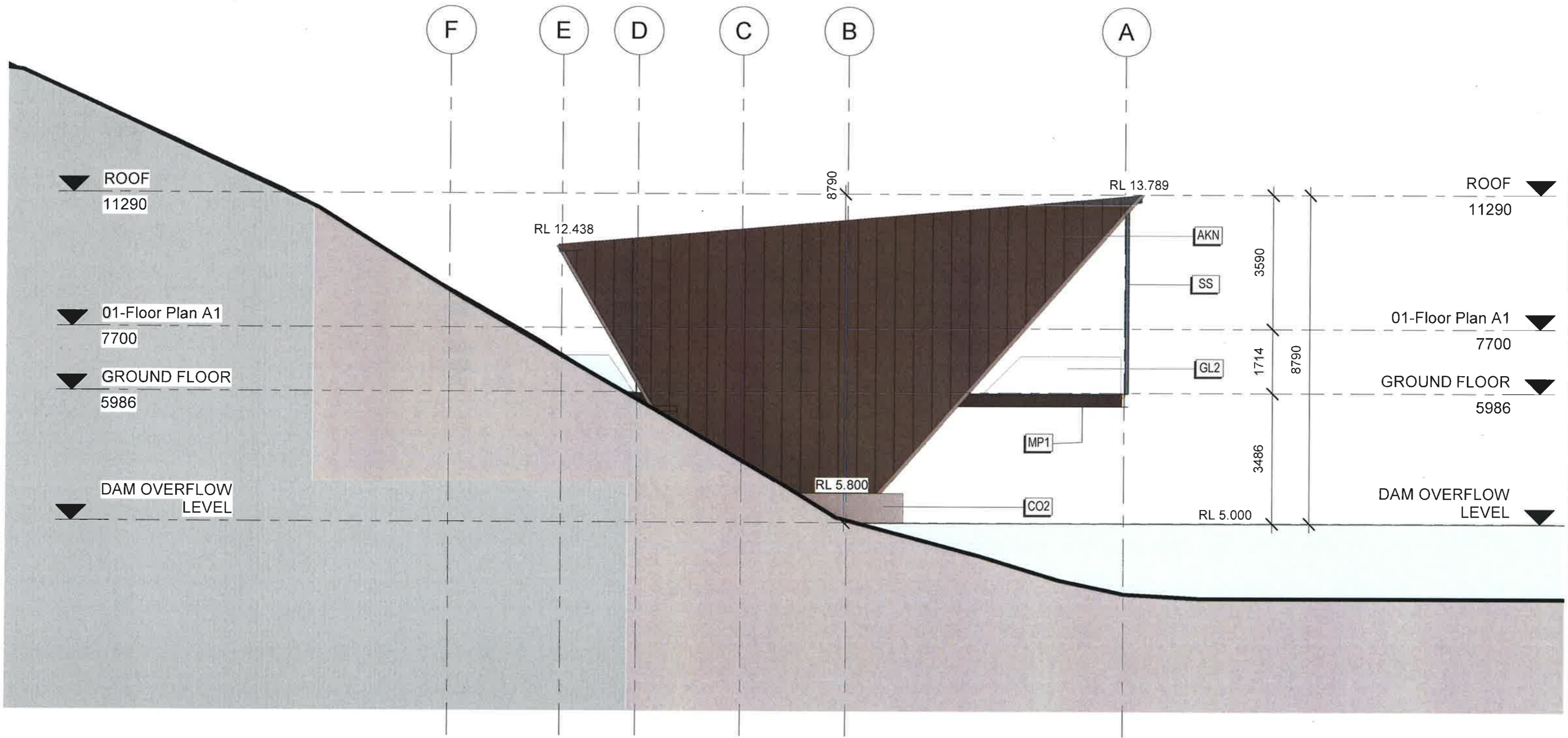
ELEVATION NORTH
Scale
Date 22/02/2018



Melbourne Office:
Level 9, Total House, 180 Russell St, Melbourne VIC 3000
Port Douglas Office:
Shop 5 - Laxmi Centre, 48 Macrossan St, Port Douglas QLD 4877
ABN 89 319 653 905 ACN 110 285 008
Email: charles@wrightarchitects.com.au
WEB: www.wrightarchitects.com.au

T: +61 3 9663 1166 F: +61 3 8080 1630
T: +61 7 4099 4965
M: +61(0)433 226 501

TP006



1 ELEVATION - WEST
1 : 100

THE BLACK TEMPLE

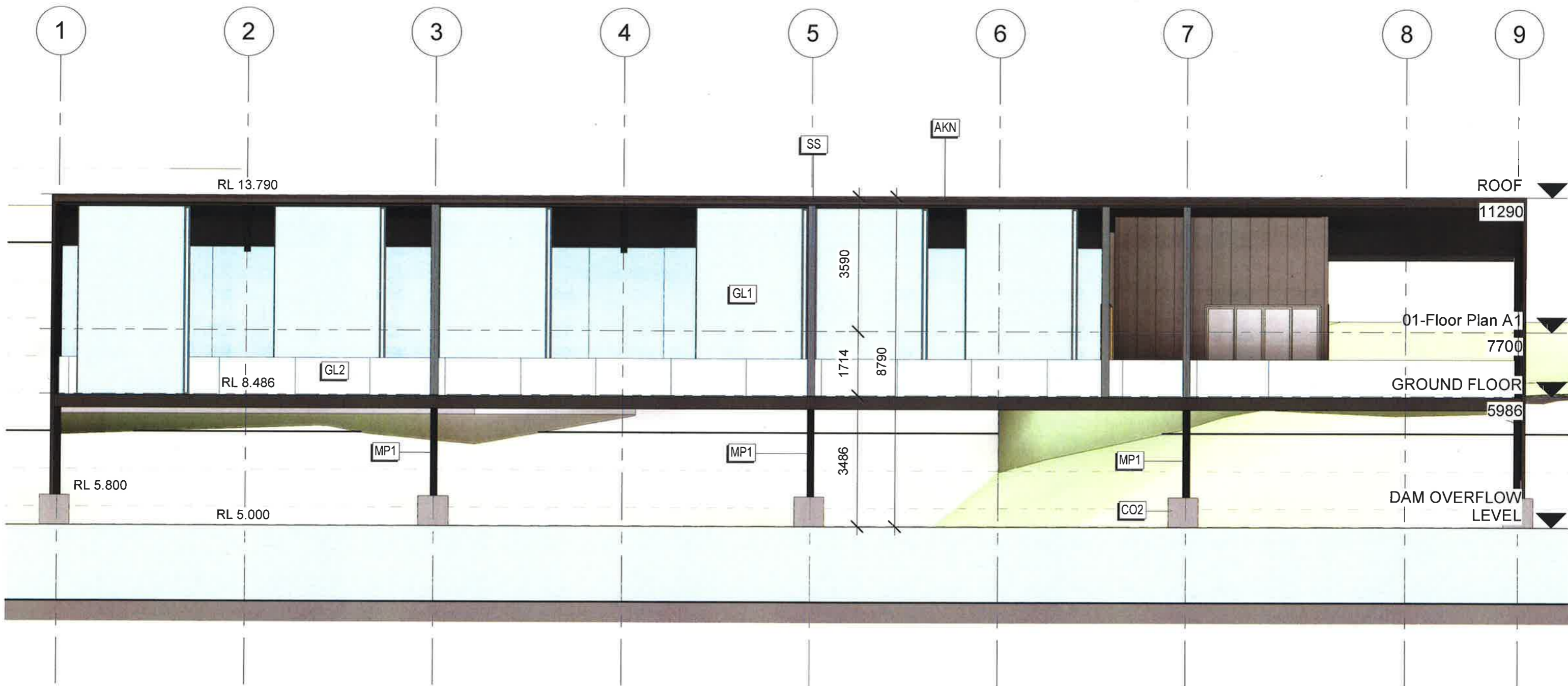
ELEVATION WEST
Scale
Date 22/02/2018



Melbourne Office:
Level 9, Total House, 180 Russell St, Melbourne VIC 3000
Port Douglas Office:
Shop 5 - Laxmi Centre, 48 Macrossan St, Port Douglas QLD 4877
ABN 89 319 653 905 ACN 110 285 008
Email: charles@wrightarchitects.com.au
WEB: www.wrightarchitects.com.au

T: +61 3 9663 1166 F: +61 3 8080 1630
T: +61 7 4099 4965
M: +61(0)433 226 501

TP007



1 ELEVATION - SOUTH
1 : 100

THE BLACK TEMPLE

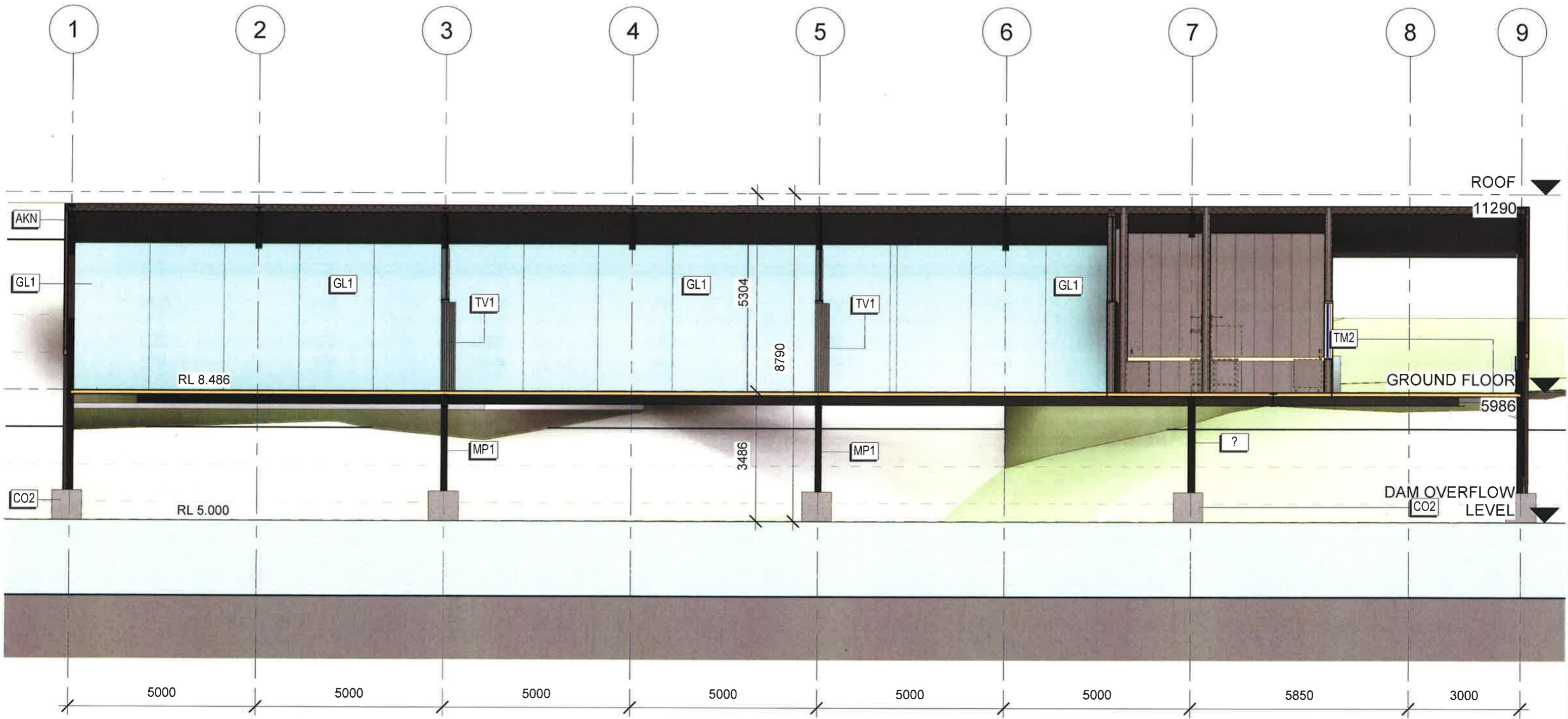
ELEVATION SOUTH
Scale
Date 22/02/2018



Melbourne Office:
Level 9, Total House, 180 Russell St, Melbourne VIC 3000
Port Douglas Office:
Shop 5 - Laxmi Centre, 48 Macrossan St, Port Douglas QLD 4877
ABN 89 319 653 905 ACN 110 285 008
Email: charles@wrightarchitects.com.au
WEB: www.wrightarchitects.com.au

T: +61 3 9663 1166 F: +61 3 8080 1630
T: +61 7 4099 4965
M: +61(0)433 226 501

TP008



1 Section A-A
1 : 100

THE BLACK TEMPLE

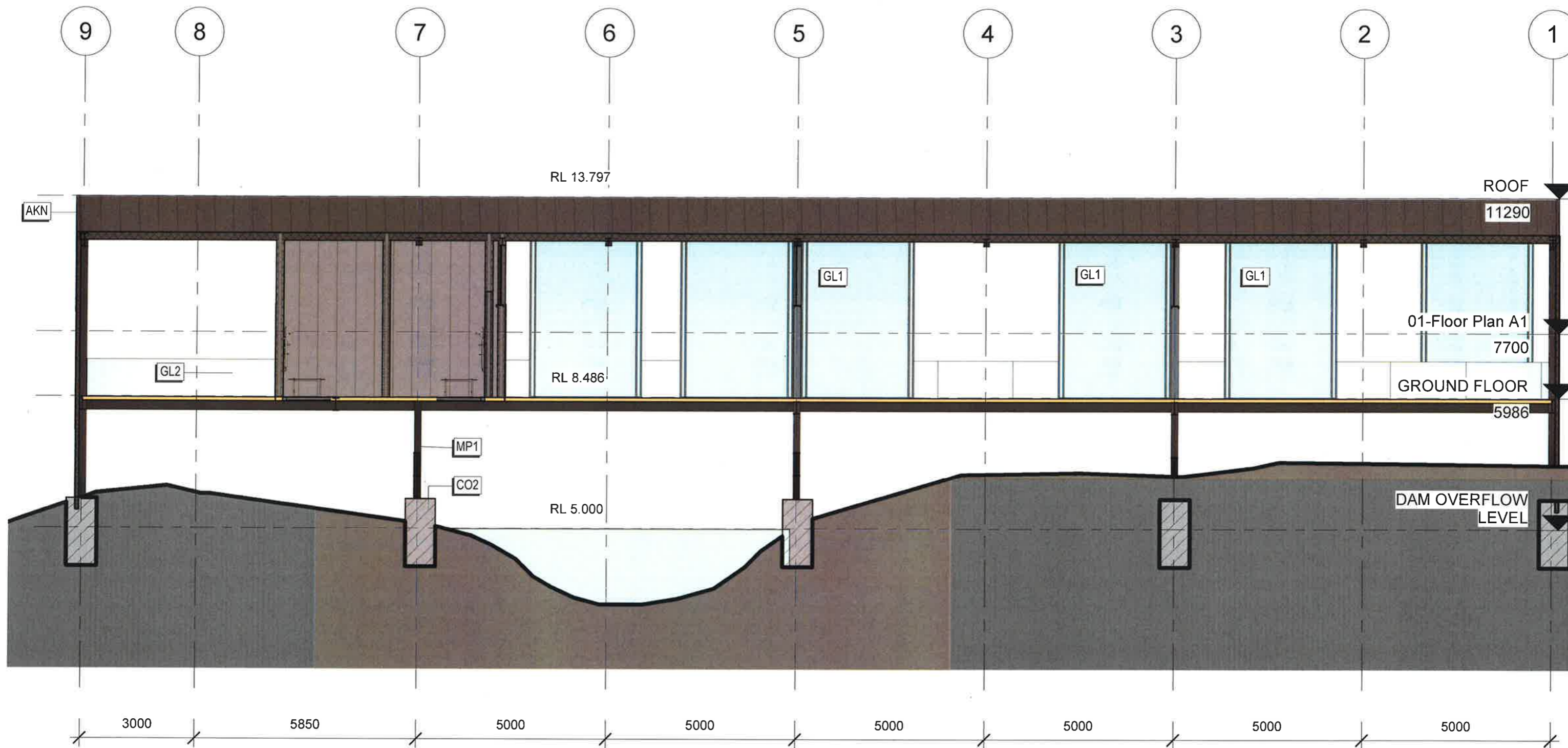
SECTION AA
Scale
Date 22/02/2018



Melbourne Office:
Level 9, Total House, 180 Russell St, Melbourne VIC 3000
Port Douglas Office:
Shop 5 - Laxmi Centre, 48 Macrossan St, Port Douglas QLD 4877
ABN 89 319 653 905 ACN 110 285 008
Email: charles@wrightarchitects.com.au
WEB: www.wrightarchitects.com.au

T: +61 3 9663 1166 F: +61 3 8090 1630
T: +61 7 4099 4965
M: +61(0)433 226 501

TP009



1 Section A-A1
1 : 100

THE BLACK TEMPLE

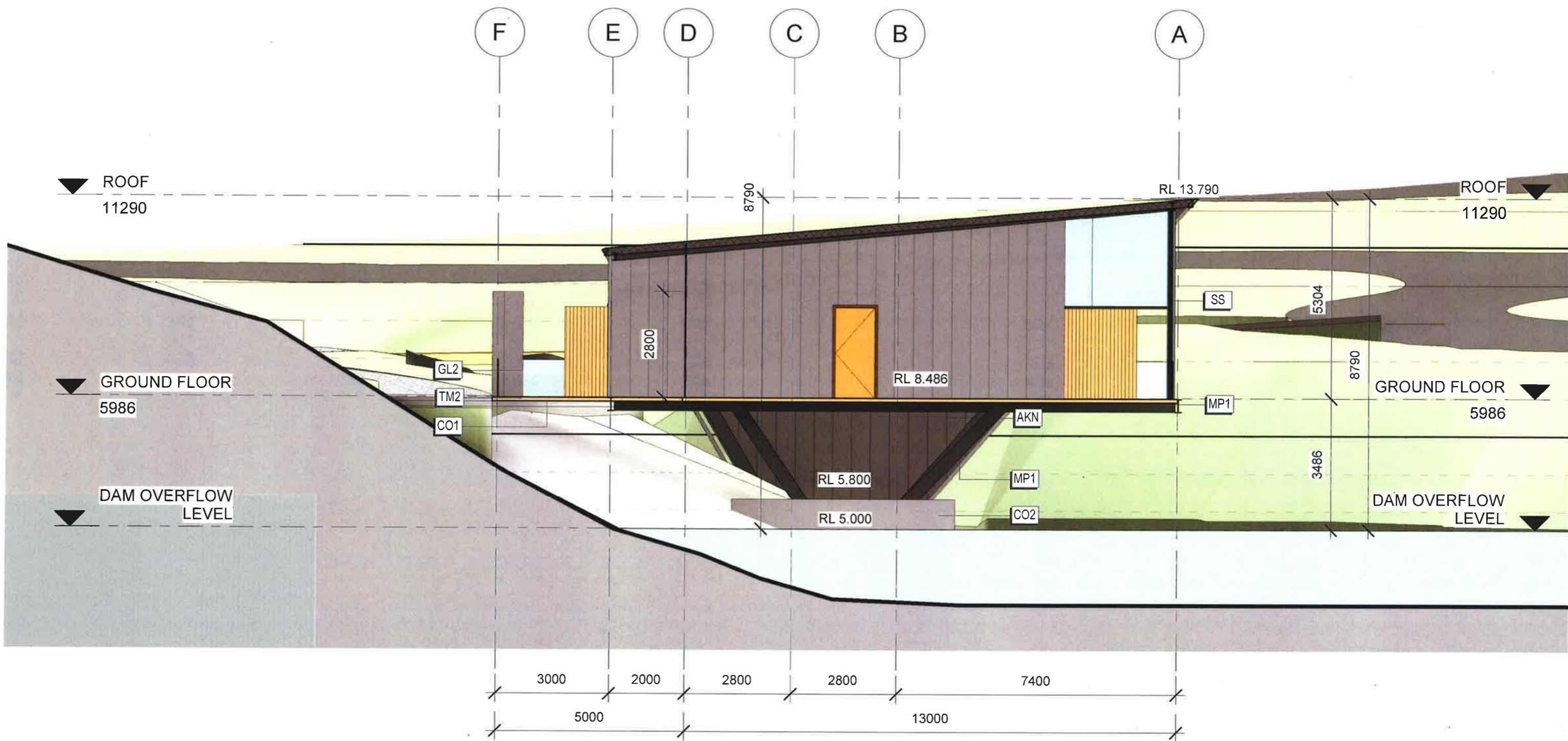
SECTION AA1
Scale
Date 22/02/2018



Melbourne Office:
Level 9, Total House, 180 Russell St, Melbourne VIC 3000
Port Douglas Office:
Shop 5 - Laxmi Centre, 48 Macrossan St, Port Douglas QLD 4877
ABN 89 319 653 905 ACN 110 285 008
Email: charles@wrightarchitects.com.au
WEB: www.wrightarchitects.com.au

T: +61 3 9663 1166 F: +61 3 8080 1630
T: +61 7 4099 4965
M: +61(0)433 226 501

TP010



1 Section B-B
1 : 100

THE BLACK TEMPLE

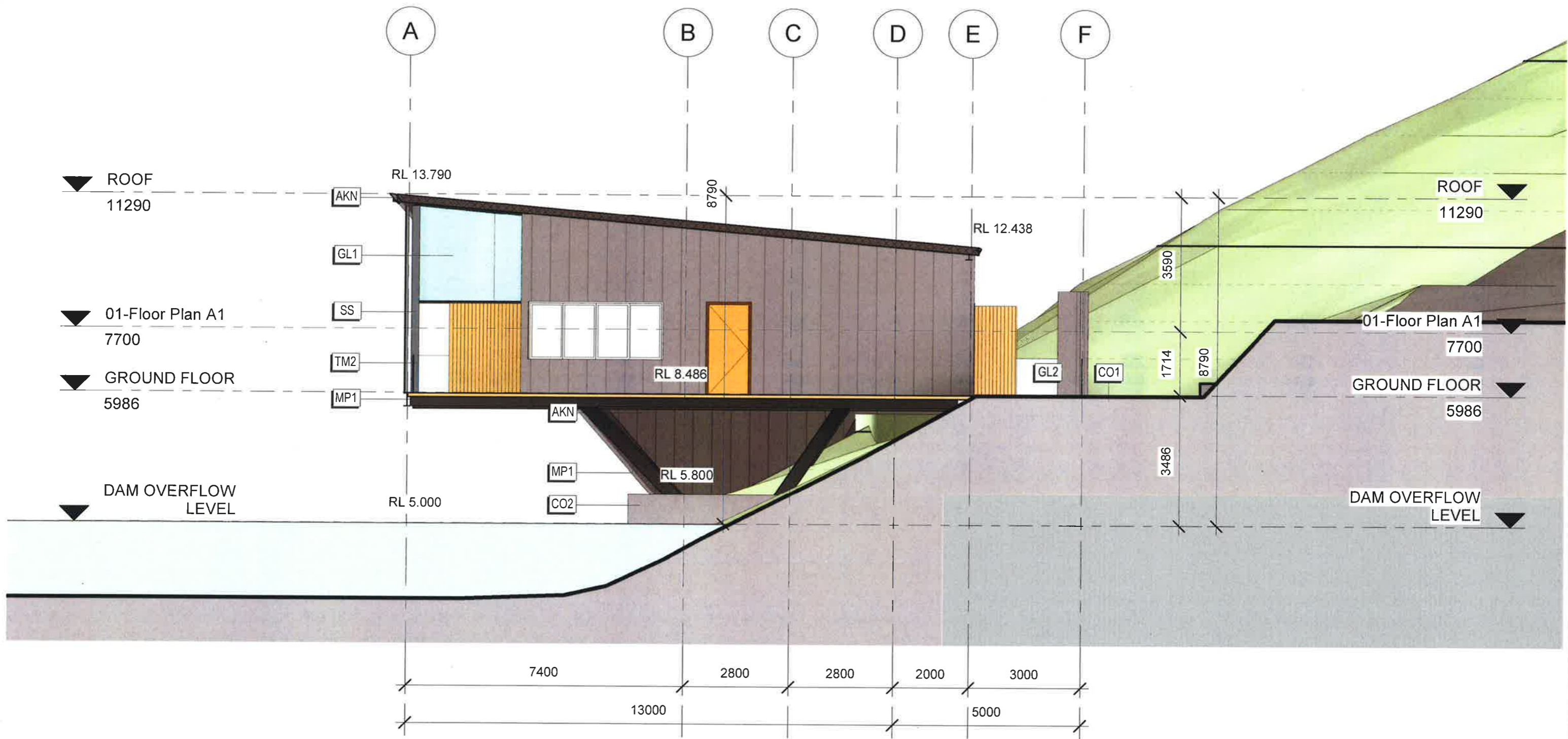
SECTION BB
Scale
Date 22/02/2018



Melbourne Office:
Level 9, Total House, 180 Russell St, Melbourne VIC 3000
Port Douglas Office:
Shop 5 - Laxmi Centre, 48 Macrossan St, Port Douglas QLD 4877
ABN 89 319 653 905 ACN 110 285 008
Email: charles@wrightarchitects.com.au
WEB: www.wrightarchitects.com.au

T: +61 3 9663 1166 F: +61 3 8080 1630
T: +61 7 4099 4965
M: +61(0)433 226 501

TP011



1 Section B-B1
1 : 100

THE BLACK TEMPLE

SECTION BB1
Scale
Date 22/02/2018



Melbourne Office:
Level 9, Total House, 180 Russell St, Melbourne VIC 3000
Port Douglas Office:
Shop 5 - Laxmi Centre, 48 Macrossan St, Port Douglas QLD 4877
ABN 89 319 653 905 ACN 110 285 008
Email: charles@wrightarchitects.com.au
WEB: www.wrightarchitects.com.au

T: +61 3 9663 1166 F: +61 3 8080 1630
T: +61 7 4099 4965
M: +61(0)433 226 501

TP012