



## HELICOPTER LANDING PROCEDURE

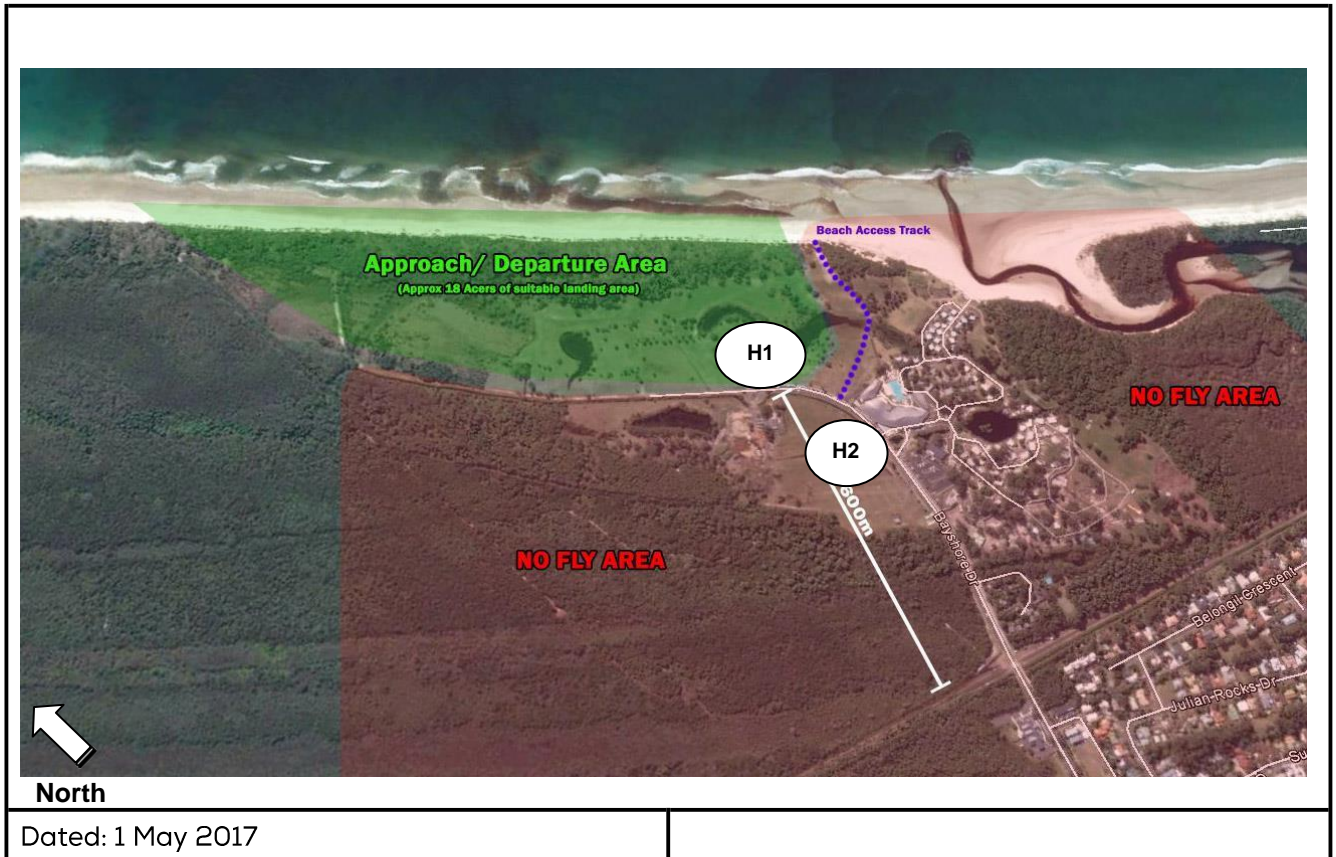
Elements of Byron support the landing of private helicopters for transferring guests to and from the resort on the provision that flight operators adhere to the following procedures:

- Approval needs to be sought prior to the planned arrival noting specific timing for landing and departure by calling the Elements of Byron Duty Manager on 02 6639 1500.
- The helicopter is not to be hovered or landed when a non-controlled person of the public is within 30 metres of the aircraft
- Aircraft noise is to be kept to a minimum when landing and taking off in consideration of nearby residents, resort guests and wildlife in the area – particularly birds.

Please refer to the landing site register and map below for specific information regarding the landing area, preferred approach/departure and resort contact details.

### BASIC HELICOPTER LANDING SITE REGISTER

<b>HLS TITLE:</b> Elements of Byron – BASIC HLS		<b>ELEVATION AMSL:</b> 20'	
<b>LOCATION:</b> Bayshore Drive, Belongil Beach NSW 2481			
<b>GPS CO-ORDINATES:</b> 28°37'26"S 153°35'12"E		<b>MAP REFERENCE:</b> Attached	
<b>MINIMUM STANDARD:</b> Basic (BASIC / STD)		<b>DAY OPS:</b> Yes	<b>NIGHT OPS:</b> No
<b>SURFACE:</b> Grass			
<b>SLOPE:</b> Nil		<b>(DEGREES UP / DOWN - DIRECTION)</b>	
<b>HAZARDS AND OBSTRUCTIONS IN VICINITY OF LANDING AREA:</b>			
<ul style="list-style-type: none"> <li>• Strong onshore winds can lead to downdrafts on leeward side of sand dunes.</li> <li>• Possible Drone Activity</li> <li>• Possible members of the public within 30m of the HLS. (A Loader or Crew member must be available to secure the site if required.)</li> <li>• Possible horse activity nearby being conducted by Zephyr horses through Elements. (Do not overfly these activities and remain clear of all stock.)</li> <li>• Wires running parallel with the road from NW to SE – Not Applicable as they are in the (NO FLY AREA)</li> </ul>			
<b>PREFERRED APPROACH:</b>			
<ul style="list-style-type: none"> <li>• Approach and Depart via the coast, preferably from the North (See Attached preferred approach and departure area highlighted in green)</li> <li>• Fly a Low Noise approach direct to the HLS.</li> </ul>			
<b>RESTRICTIONS ON APPROACH:</b>			
<ul style="list-style-type: none"> <li>• Do not land if unaccompanied personal are within 30m of the HLS.</li> <li>• If required, go around until the site can be secured by ground crew.</li> </ul>			
<b>PREFERRED DEPARTURE:</b> North - over water, climb to 500' as soon as practicable.			
<b>RESTRICTIONS ON DEPARTURE:</b> Avoid overflying pedestrians, stock and stick to the preferred departure points highlighted in green in the below map.			
<b>SPECIFIC INSTRUCTIONS AND RESTRICTIONS:</b>			
<ul style="list-style-type: none"> <li>• Due to the nature of the unfenced open space, a ground crew member is required to secure the landing site prior to helicopters arrival.</li> <li>• Prior to arrival, all pilots should be familiar with the characteristics of the HLS and this document. This plays a significant part of the pilot's recce and assessment of the HLS suitability.</li> <li>• As stated in CAAP 92-2 Section 5. – no person shall be within 30m of the closest point of hovering or taxiing helicopter (other than ground crew).</li> </ul>			



H1: Commercial Operators (bringing their own ground crew).

H2: Private Operators (hotel staff to facilitate landing protocol).