

# DINGO LANE SOLAR FARM - STATEMENT OF LANDSCAPE INTENT

DINGO LN, MYOCUM NSW 2481



C O N S U L T I N G



### VEGETATION PRINCIPLES

Dingo Lane Solar Farm is surrounded by low lying, flat rural farmland to two of the three sides of the property. Grazing is the predominant land use within the low lying valley surrounding the site. To the north, east and west are areas of Large Lot Residential, located on undulating hills.

On the surrounding hills and ridges within the viewshed, the character of rural land transitions from large grazing paddocks to smaller production areas include macadamia orchards. These areas support a greater diversity of tree cover including remnant vegetation and cultivated tree crops.



Other areas to consider, such as the dedicated viewing areas, will present a more detailed visual appearance for visitors, including attractive layered sub-tropical planting, wayfinding elements and potential rest areas.



The site proposes to have a 4-5m wide buffer of natural vegetation along the boundaries in order to assist in improving the overall visual amenity.

This vegetation screen will mitigate glare and visual impact to surrounding properties and present as a soft, native tree and shrub lined border which will enhance view lines and reinforce the rural character of the area.

This vegetation screen will mitigate glare and visual impact to surrounding properties and present as a soft, native tree and shrub lined border, enhancing view lines and reinforcing the rural landscape character of the area.



In summary, the landscape for Dingo Lane Solar Farm will provide and perform both functionally and aesthetically and satisfy and support local Council's landscape principals for the site.

## Statement of Landscape Intent

DINGO LN, MYOCUM NSW 2481

Date: MONTH, YEAR  
Scale: AS SHOWN  
Rev: 01

Drawn: MP  
Checked: SW

Page 2

Level 1 2247 Gold Coast Hwy  
Nobby Beach  
PO Box 206 Nobby Beach QLD 4218  
Telephone: 07 5526 1500  
Fax: 07 5526 1502  
admin@planitconsulting.com.au

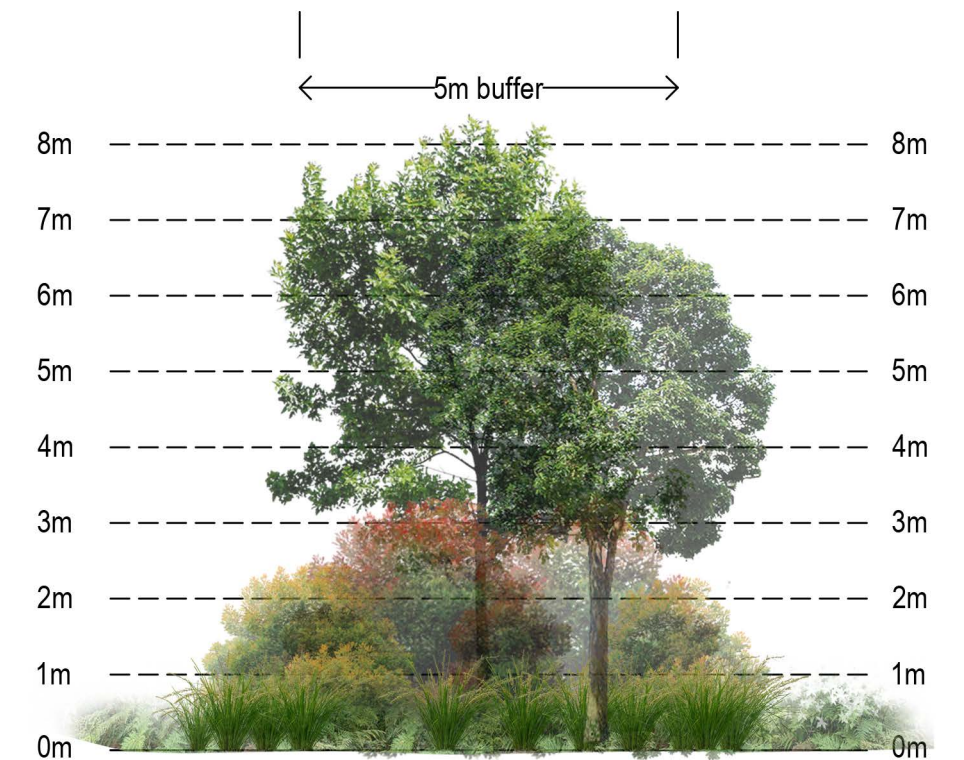






### LEGEND

- ① VISITOR AREA  
Refer to Visitor Area Typical Layout on following page.
- ② LANDSCAPE BUFFER PLANTING  
Refer to typical buffer planting arrangement for information.
- ③ OPEN GRASSLAND AREAS
- ④ SOLAR ARRAY AREA



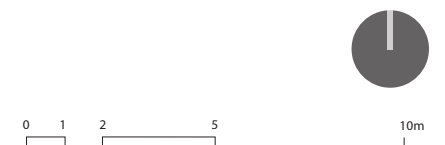
Typical buffer planting - Section 'A'



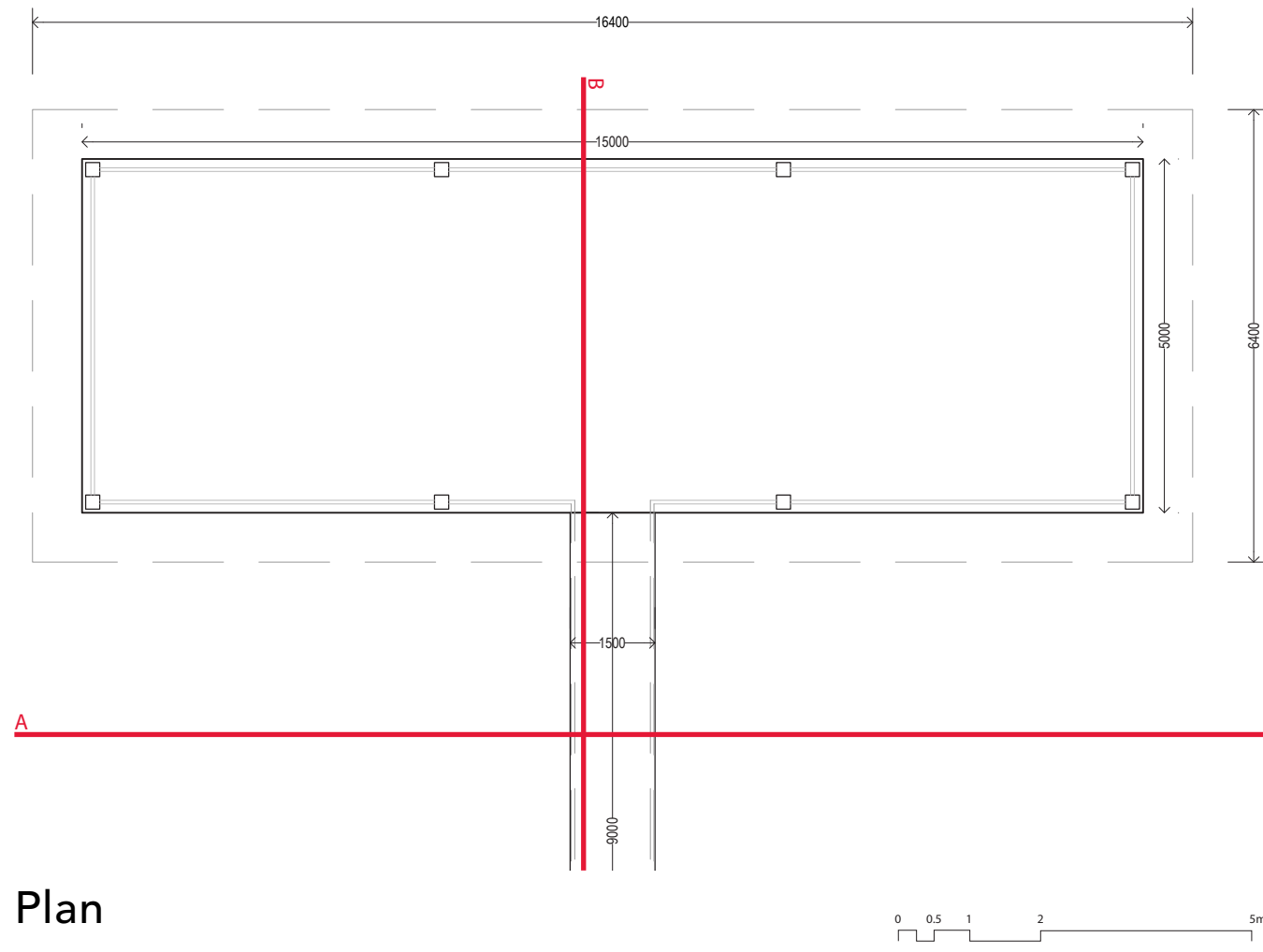


### LEGEND

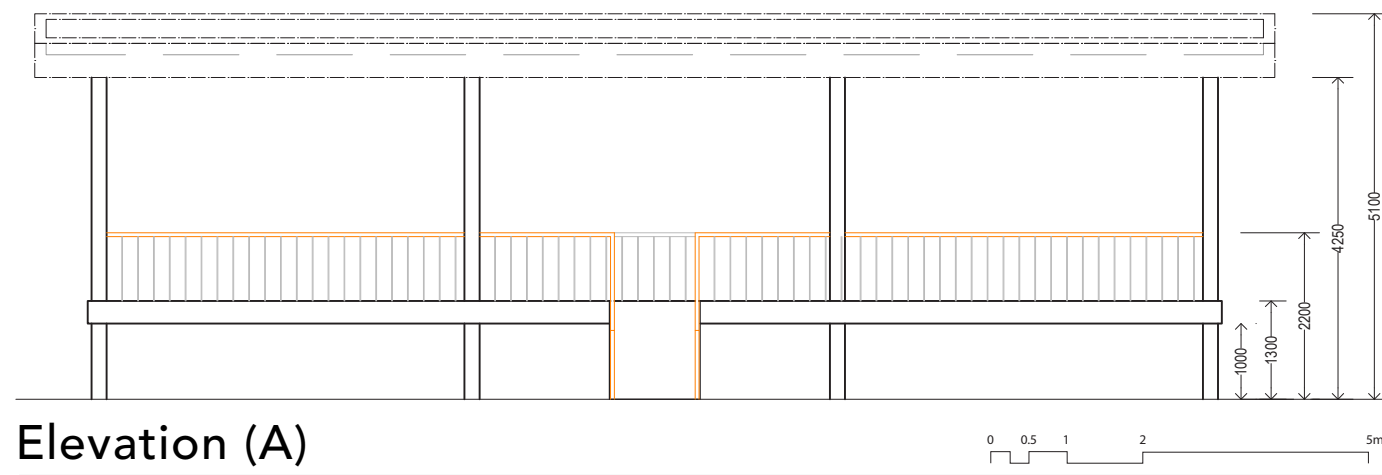
- ① AMENITY PLANTING TO CARPARK AREA  
Five carparks and a turn around area, refer to civil plans for information.
- ② AMENITY PLANTING EITHER SIDE OF WALKWAY.  
Planting to contribute aesthetically and assist in landscape buffering N/W frontage.
- ③ OPEN GRASSLAND AREAS
- ④ VIEWING PLATFORM  
Refer to viewing platform typical details for information.
- ⑤ LANDSCAPE BUFFER PLANTING  
Refer to typical buffer planting arrangement for information.
- ⑥ SOLAR FARM







Plan



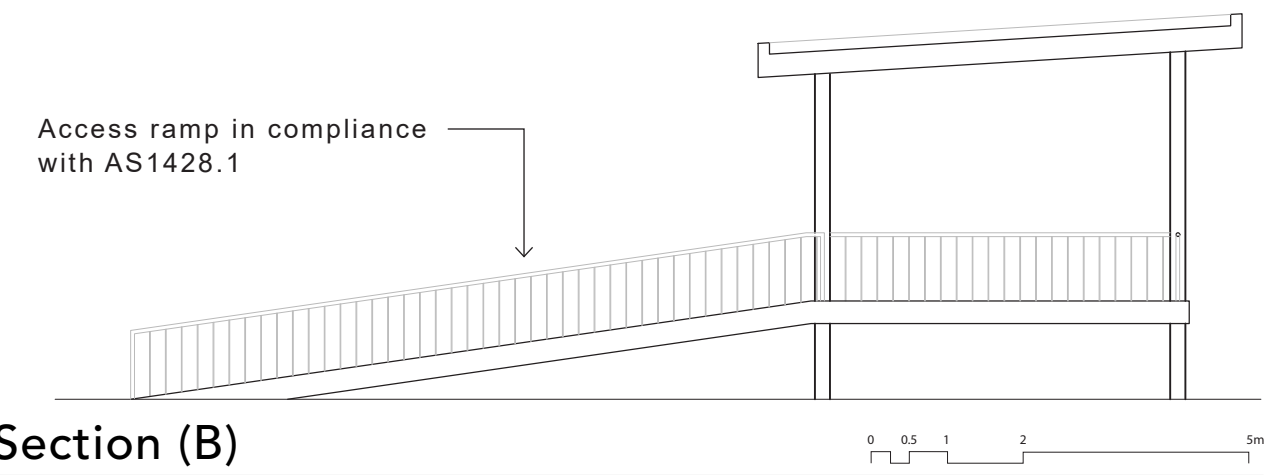
Elevation (A)

The viewing platform will allow for approximately 30 visitors to stand and admire the solar arrays. This structure will be built on piers, to achieve an elevated 1.3m above the ground level. This structure will be accessed by a DDA compliant access ramp, with native planting either side.

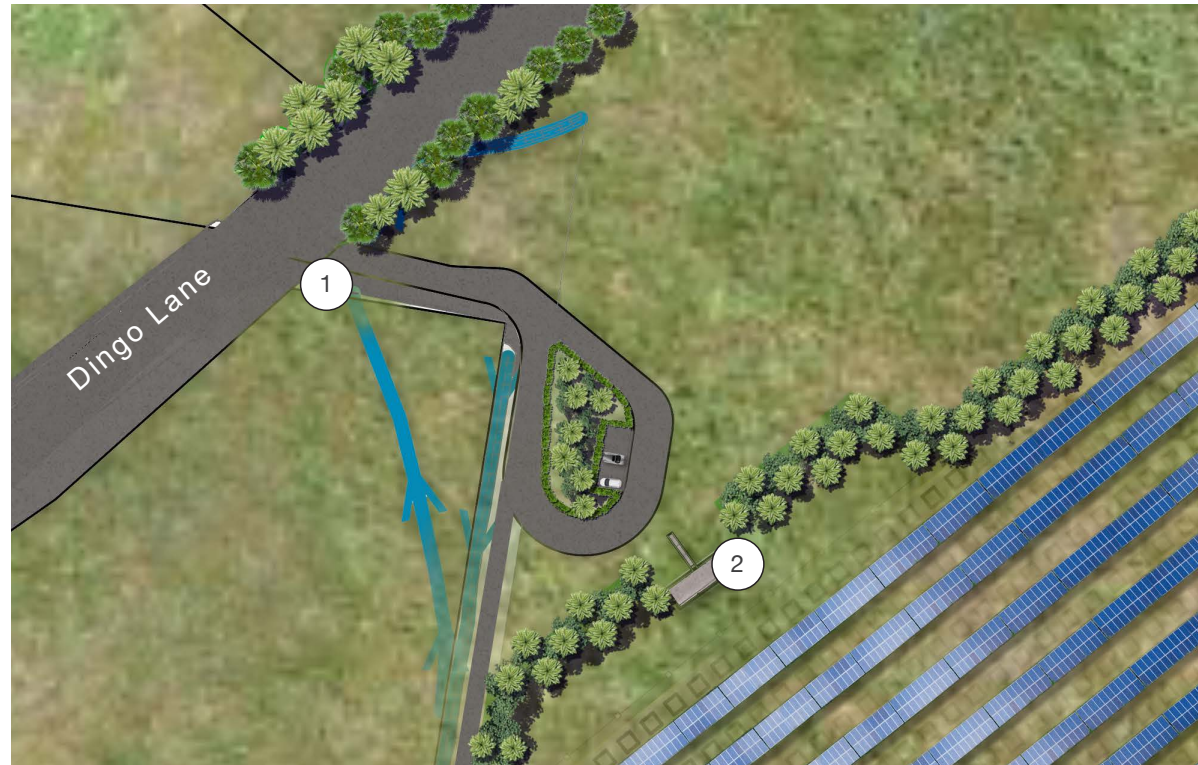
The roof above the platform will be a natural colour bond colour, to blend in with the surrounding landscape.



3D Perspective



Section (B)



Proposed signage locations (Plan NTS)

### LEGEND

- ① ENTRY SIGN AND VISITOR PARKING.  
Located on entry road.
- ② EDUCATIONAL SIGNAGE  
Located on viewing platform.

Visitor signage will be located at the entry to the site along with educational plaques within the elevated viewing platform.

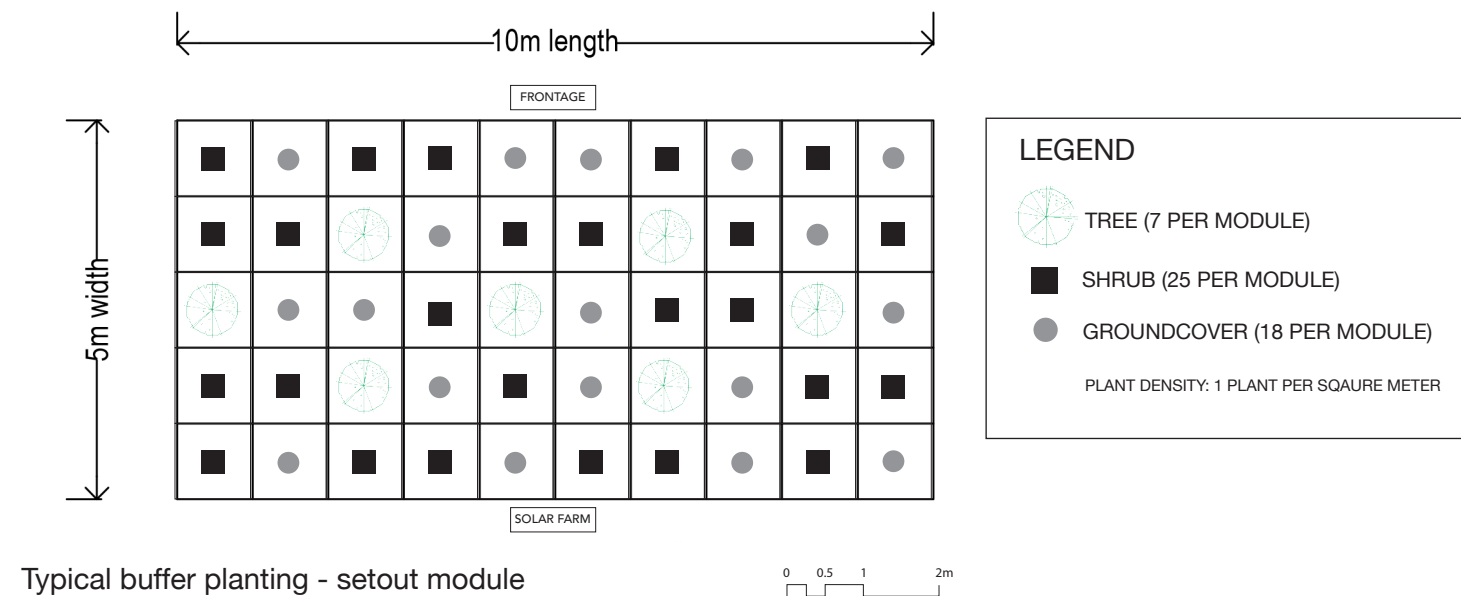
The ageless appearance of Corten will be applied to laser cut panels that can be forged into different shapes and sizes.

The appearance of the Corten has been chosen to tie in with the surrounding rural character.



Precedent imagery





Typical buffer planting - setout module

Species have been selected from plant communities recognised within the foothills and hinterland area of Myocum.

Plants are to achieve a minimum density of 1 plant per sqaure meter at installation, with diverse mix of species setout on the ground.

Trees will be located centrally within the buffer with shrubs and groundcovers to tier down to the front and back of the buffer area.



Timeline of projected plant growth over 15 years

## Statement of Landscape Intent

DINGO LN, MYOCUM NSW 2481

Date: MONTH, YEAR  
Scale: AS SHOWN  
Rev: 01

Drawn: MP  
Checked: SW

Page 7

Level 1 2247 Gold Coast Hwy  
Nobby Beach  
PO Box 206 Nobby Beach QLD 4218  
Telephone: 07 5526 1500  
Fax: 07 5526 1502  
admin@plantconsulting.com.au





Buffer Planting

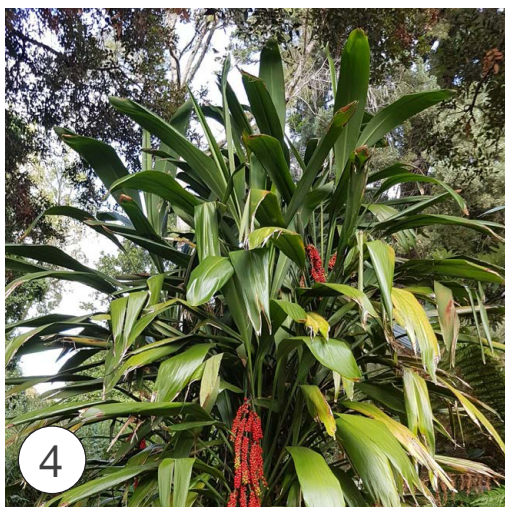
CODE	BOTANIC NAME	COMMON NAME
1	Allocasuarina littoralis	Black She-Oak
2	Allocasuarina torulosa	Forest Oak
3	Callistemon viminalis	Weeping Bottle Brush
4	Cryptocarya laevigata	Glossy Laurel
5	Daviesia arborea	Weeping Pea Tree
6	Eleocarpus reticulatis	Blue Berry Ash
7	Lophostemon confertus	Brush Box
8	Breynia oblongifolia	Breynia
9	Callicarpa pendunculata	Velvet Leaf
10	Cordyline petiolaris	Broad-leaf Palm Lilly
11	Cordyline stricta	Narrow-leaved Palm Lily
12	Dodonaea viscosa	Hop bush
13	Doryanthus palmeri	Spear Lily
14	Hovea acutifolia	Pointed-Leaf Hovea
15	Melastoma affine	Blue Tongue
16	Alpinia caeurea	Native Ginger
17	Dianella longifolia	Blue Flax Lily
18	Hibebrtia Scandens	Snake Vine
19	Lomandra hystrix	Mat Rush





Amenity Planting

CODE	BOTANIC NAME	COMMON NAME
1	Callistemon viminalis	Weeping Bottle Brush
2	Eleocarpus reticulatis	Blue Berry Ash
3	Breynia oblongifolia	Breynia
4	Cordyline petiolaris	Broad-leaf Palm Lilly
5	Cordyline stricta	Narrow-leaved Palm Lily
6	Callistemon comboynensis	Cliff bottlebrush
7	Dianella Caerulea	Blue Flax Lily
8	Doryanthus palmeri	Spear Lily
9	Hovea acutifolia	Pointed-Leaf Hovea
10	Melastoma affine	Blue Tongue
11	Alpinia caeurlea	Native Ginger
12	Dianella longifolia	Blue Flax Lily
13	Hibbertia scandens	Snake vine
14	Lomandra hystrix	Mat rush
15	Westringea fruiticosa	Native Rosemary







C O N S U L T I N G

PREPARED BY PLANIT CONSULTING | [INFO@PLANITCONSULTING.COM.AU](mailto:INFO@PLANITCONSULTING.COM.AU) | [WWW.PLANITCONSULTING.COM.AU](http://WWW.PLANITCONSULTING.COM.AU)