

Brunswick Valley Heritage Park

Maslen Arboretum Map

John Tann
February 2022

Maslen Arboretum Brunswick Valley Heritage Park

Maslen Arboretum is located in Brunswick Valley Heritage Park on the right bank of the Brunswick River in Mullumbimby, New South Wales. Established with the leadership and foresight of Russ and Beryl Maslen in 1980, the arboretum has 300 species of local rainforest trees grown from seeds and seedlings collected locally from forests within the Brunswick, Tweed and Richmond valleys.



Entrance to the arboretum is next to the tennis courts in Tyagarah Street, Mullumbimby.

Maslen Arboretum in Brunswick Valley Heritage Park is supported by Brunswick Valley Landcare.

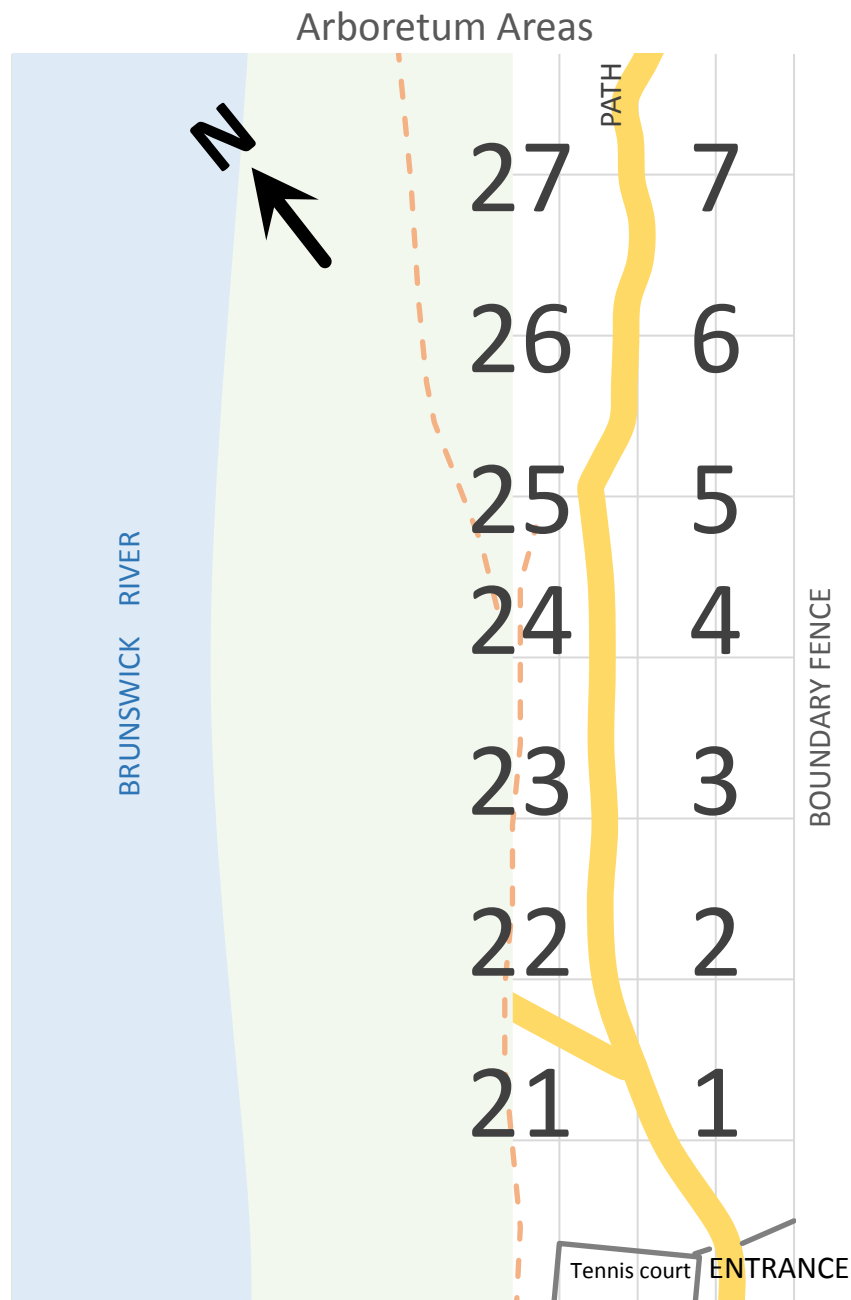


This work is licensed under the Creative Commons Attribution 4.0 International Licence.
<https://doi.org/10.6084/m9.figshare.19114871>

Arboretum Map

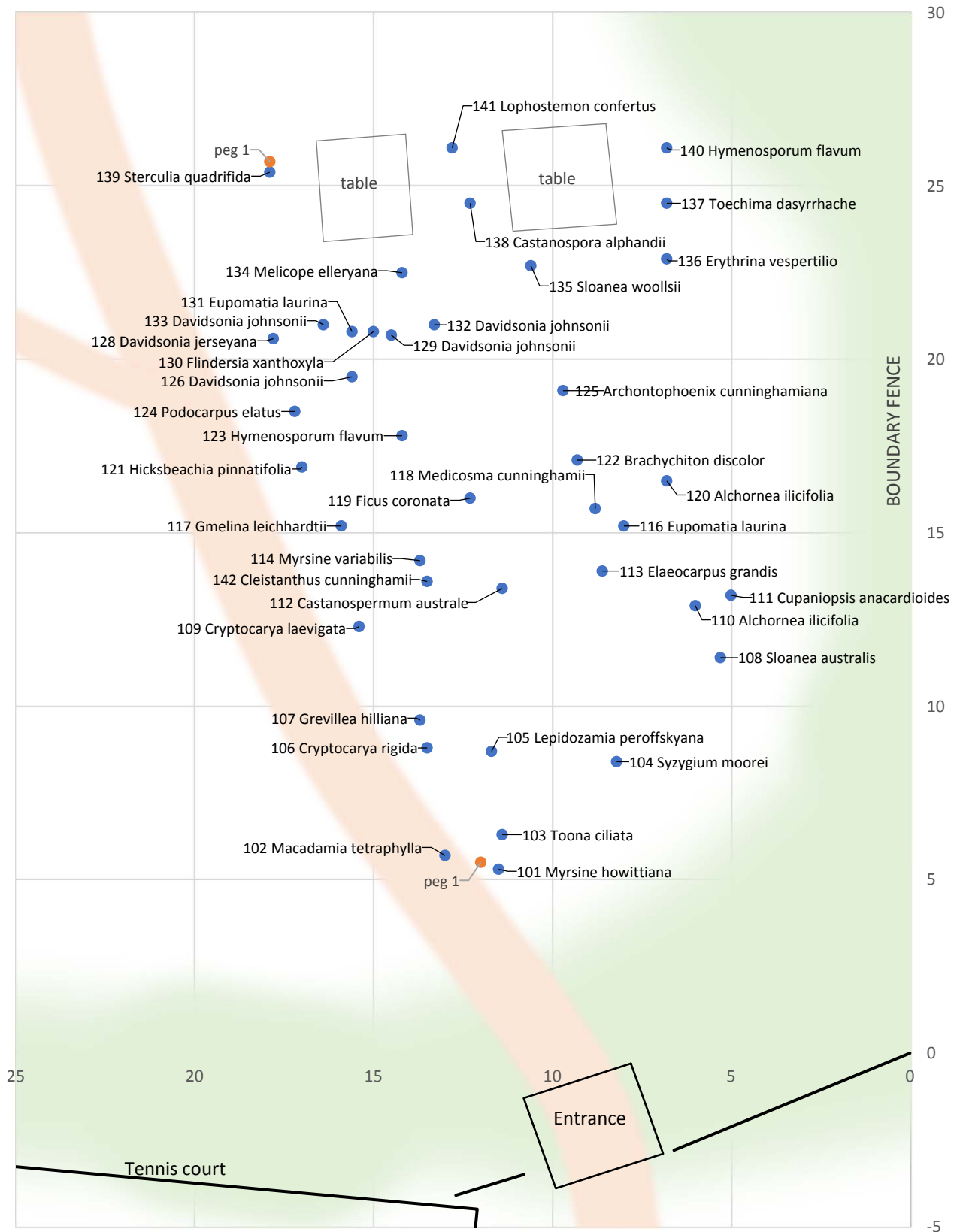
This booklet presents a series of maps of the trees of Maslen Arboretum. Trees can be found growing in areas labelled 1 to 27 with markers on the ground showing area boundaries. Trees are labelled with both common name and scientific name.

The coordinates of each tree refer to the park's southern ENTRANCE on Tyagarah St, and the eastern BOUNDARY FENCE behind the adjoining houses. Tree locations are measured in metres from these boundaries.



Marked areas 1-7 and 21-27 are located either side of the path within Heritage Park.

Area 1

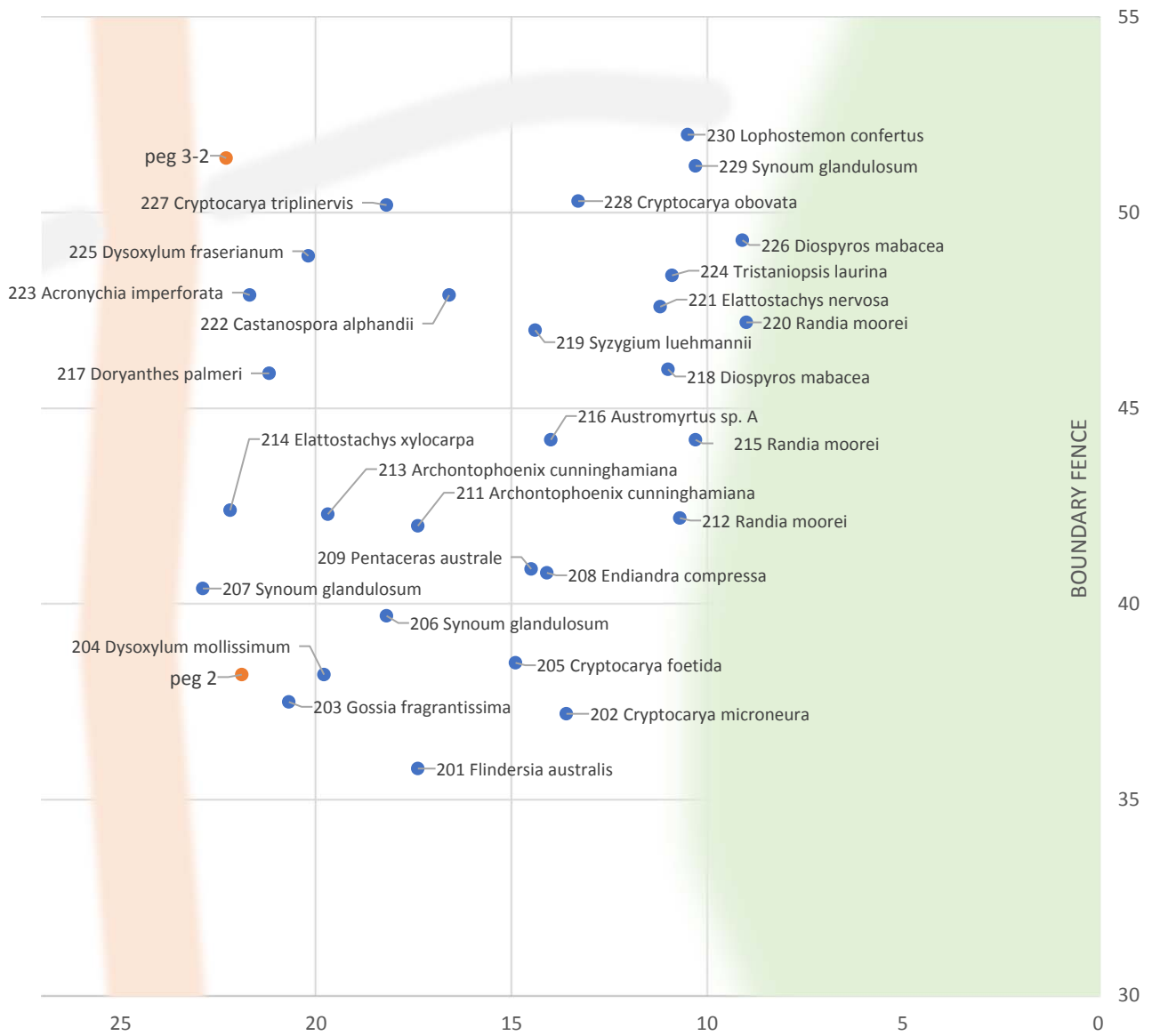


Area 1

*	No.	Scientific name	Common name	Fence	Entrance	Notes
	110	<i>Alchornea ilicifolia</i>	Native Holly	6	13	
	120	<i>Alchornea ilicifolia</i>	Native Holly	7	17	
	125	<i>Archontophoenix cunninghamiana</i>	Bangalow Palm cluster	10	19	
	122	<i>Brachychiton discolor</i>	Lacebark	9	17	
	112	<i>Castanospermum australe</i>	Black Bean	11	13	
	138	<i>Castanospora alphandii</i>	Brown Tamarind	12	25	
	142	<i>Cleistanthus cunninghamii</i>	Omega	14	14	
	109	<i>Cryptocarya laevigata</i>	Glossy Laurel	15	12	
	106	<i>Cryptocarya rigida</i>	Rose Maple	14	9	
	111	<i>Cupaniopsis anacardioides</i>	Tuckeroo	5	13	
E	128	<i>Davidsonia jerseyana</i>	Davidson Plum	18	21	
E	126	<i>Davidsonia johnsonii</i>	Smooth Davidson Plum	16	20	=Davidsonia sp. Buri
E	129	<i>Davidsonia johnsonii</i>	Smooth Davidson Plum	15	21	=Davidsonia sp. Mid
E	132	<i>Davidsonia johnsonii</i>	Smooth Davidson Plum	13	21	=Davidsonia sp. A
E	133	<i>Davidsonia johnsonii</i>	Smooth Davidson Plum	16	21	
	113	<i>Elaeocarpus grandis</i>	Blue Quandong	9	14	
	136	<i>Erythrina vespertilio</i>	Bat's Wing Coral Tree	7	23	
	116	<i>Eupomatia laurina</i>	Bolwarra	8	15	
	131	<i>Eupomatia laurina</i>	Bolwarra	16	21	
	119	<i>Ficus coronata</i>	Creek Sandpaper Fig	12	16	
	130	<i>Flindersia xanthoxyla</i>	Long Jack	15	21	
	117	<i>Gmelina leichhardtii</i>	White Beech	16	15	
E	107	<i>Grevillea hilliana</i>	White Yiel Yiel	14	10	
V	121	<i>Hicksbeachia pinnatifolia</i>	Red Bopple Nut	17	17	
	123	<i>Hymenosporum flavum</i>	Native Frangipani	14	18	
	140	<i>Hymenosporum flavum</i>	Native Frangipani	7	26	
	105	<i>Lepidozamia peroffskyana</i>	Shining Burrawang	12	9	
	141	<i>Lophostemon confertus</i>	Brush Box	13	26	
V	102	<i>Macadamia tetraphylla</i>	Rough-shelled Macadamia	13	6	
	118	<i>Medicosma cunninghamii</i>	Pinkheart	9	16	
	134	<i>Melicope elleryana</i>	Pink Euodia	14	23	
	101	<i>Myrsine howittiana</i>	Brush Muttonwood	12	5	
	114	<i>Myrsine variabilis</i>	Muttonwood	14	14	= <i>Rapanea variabilis</i>
	124	<i>Podocarpus elatus</i>	Brown Pine	17	19	
	108	<i>Sloanea australis</i>	Maiden's Blush	5	11	
	135	<i>Sloanea woollsii</i>	Yellow Carabeen	11	23	
	139	<i>Sterculia quadrifida</i>	Peanut Tree	18	25	
V	104	<i>Syzygium moorei</i>	Coolamon	8	8	
	137	<i>Toechima dasyrrhache</i>	Blunt-leaved Steelwood	7	25	
	103	<i>Toona ciliata</i>	Red Cedar	11	6	

* Threatened Species: C – Critically Endangered, E – Endangered, V - Vulnerable

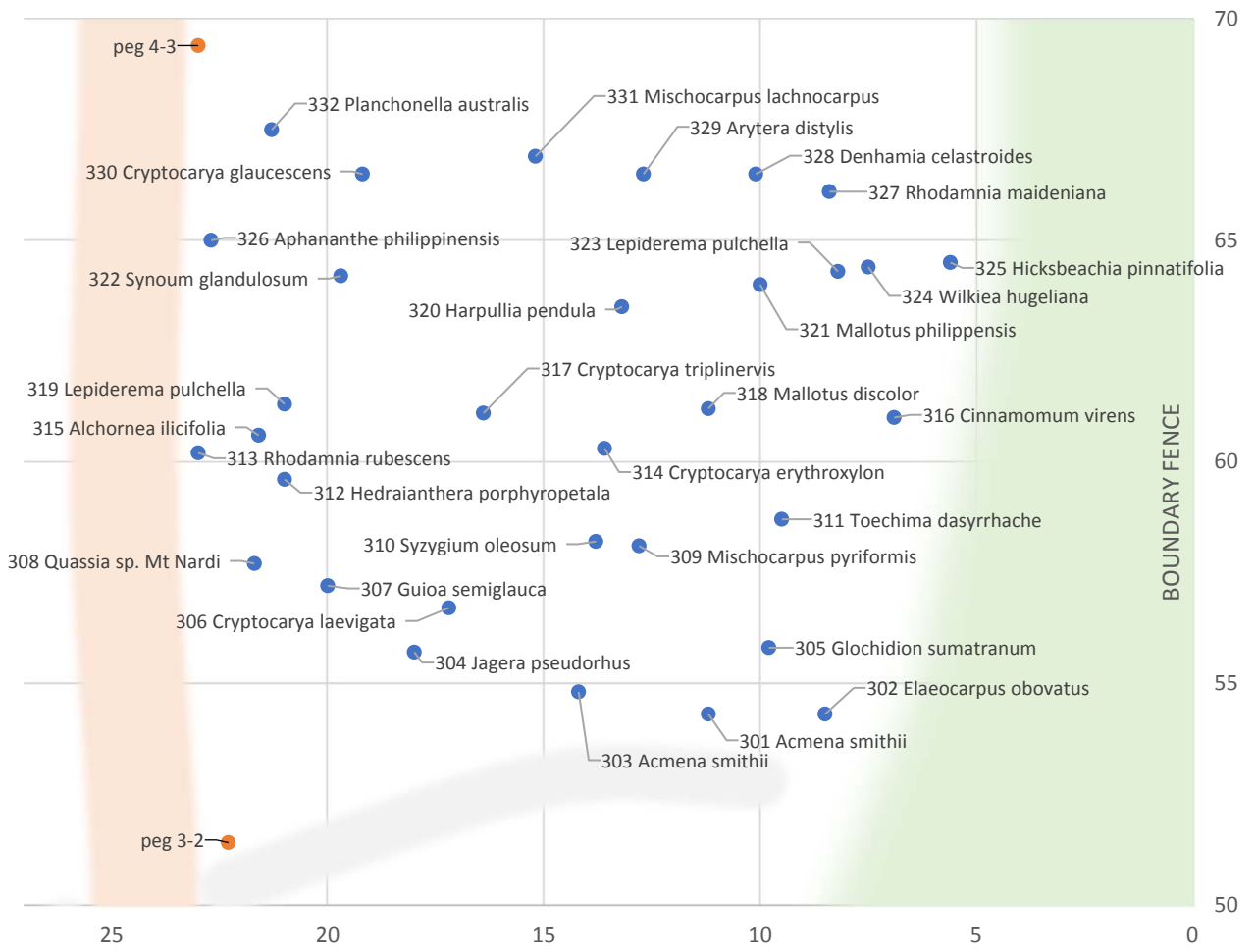
Area 2



Area 2

*	No.	Scientific name	Common name	Fence	Entrance	Notes
	223	<i>Acronychia imperforata</i>	Beach Acronychia	22	48	
	211	<i>Archontophoenix cunninghamiana</i>	Bangalow Palm	17	42	
	213	<i>Archontophoenix cunninghamiana</i>	Bangalow Palm	20	42	
	216	<i>Austromyrtus sp. A</i>	Velvet Myrtle	14	44	? Lenwebbia prominens
	222	<i>Castanospora alphandii</i>	Brown Tamarind	17	48	
V	205	<i>Cryptocarya foetida</i>	Stinking Cryptocarya	15	39	
	202	<i>Cryptocarya microneura</i>	Murrogun	14	37	
	228	<i>Cryptocarya obovata</i>	Pepperberry	13	50	
	227	<i>Cryptocarya triplinervis</i>	Three-veined Laurel	18	50	
E	218	<i>Diospyros mabacea</i>	Red-fruited Ebony	11	46	very small
E	226	<i>Diospyros mabacea</i>	Red-fruited Ebony	9	49	
V	217	<i>Doryanthes palmeri</i>	Spear Lily	21	46	
	225	<i>Dysoxylum fraserianum</i>	Rosewood	20	49	
	204	<i>Dysoxylum mollissimum</i>	Red Bean	20	38	was <i>Dysoxylum fraseri</i>
	221	<i>Elattostachys nervosa</i>	Green Tamarind	11	48	
	214	<i>Elattostachys xylocarpa</i>	White Tamarind	22	42	
	208	<i>Endiandra compressa</i>	White Bark	14	41	
	201	<i>Flindersia australis</i>	Australian Teak	17	36	
E	203	<i>Gossia fragrantissima</i>	Sweet Myrtle	21	38	= <i>Austromyrtus fragrans</i>
	230	<i>Lophostemon confertus</i>	Brush Box	11	52	
	209	<i>Pentaceras australe</i>	Bastard Crows Ash	15	41	
E	212	<i>Randia moorei</i>	Spiny Gardenia	11	42	
E	215	<i>Randia moorei</i>	Spiny Gardenia	10	44	no label
E	220	<i>Randia moorei</i>	Spiny Gardenia	9	47	
	206	<i>Synoum glandulosum</i>	Scentless Rosewood	18	40	
	207	<i>Synoum glandulosum</i>	Scentless Rosewood	23	40	
	229	<i>Synoum glandulosum</i>	Scentless Rosewood	10	51	
	219	<i>Syzygium luehmannii</i>	Riberry	14	47	
	224	<i>Tristaniopsis laurina</i>	Water Gum	11	48	

Area 3

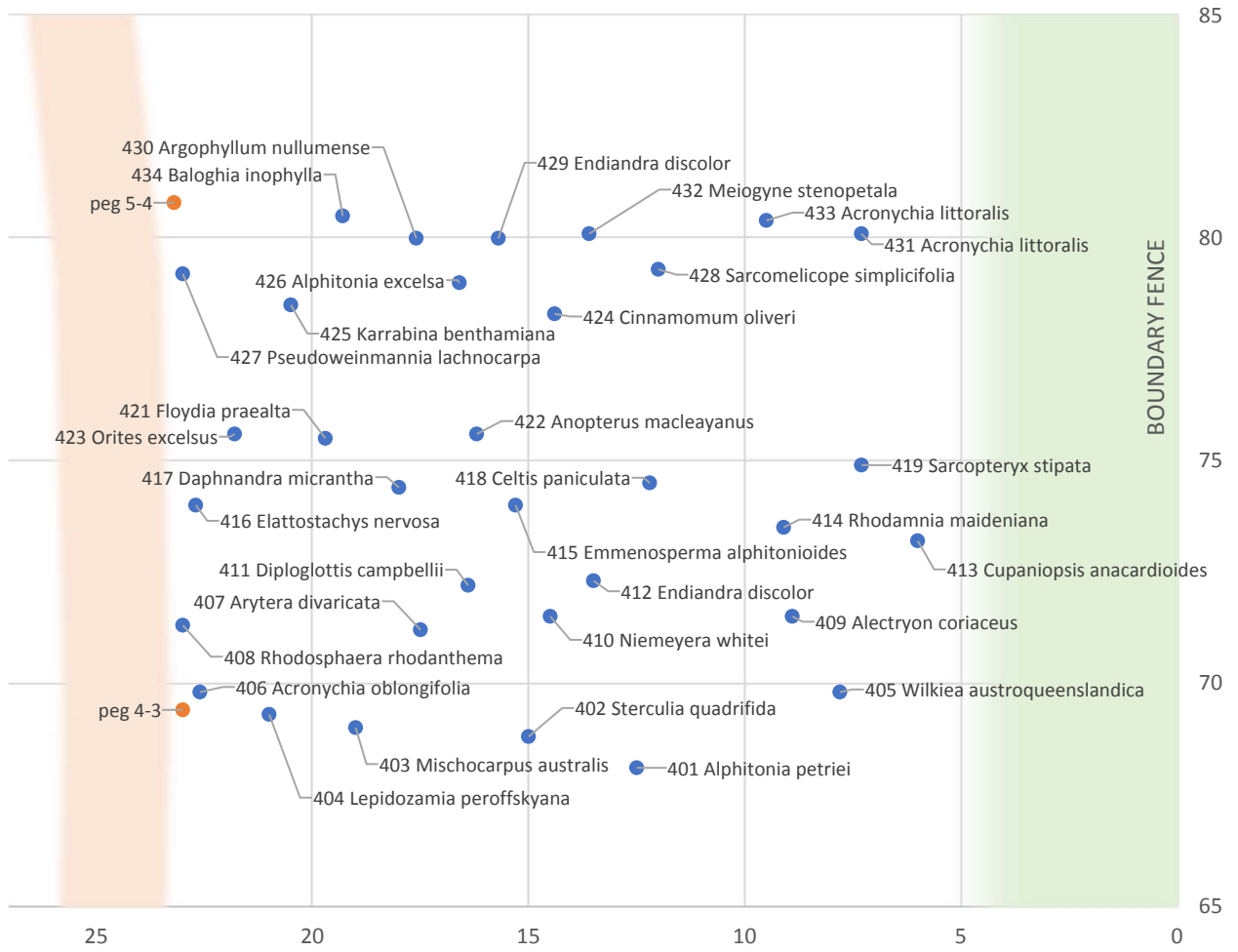


Area 3

*	No.	Scientific name	Common name	Fence	Entrance	Notes
	301	<i>Acmena smithii</i>	Creek Lilly Pilly	11	54	
	303	<i>Acmena smithii</i>	Creek Lilly Pilly	14	55	
	315	<i>Alchornea ilicifolia</i>	Native Holly	22	61	
	326	<i>Aphananthe philippinensis</i>	Rough-leaved Elm	23	65	
	329	<i>Arytera distylis</i>	Twin-leaved Coogera	13	67	
	316	<i>Cinnamomum virens</i>	Red-barked Sassafras	7	61	
	314	<i>Cryptocarya erythroxylon</i>	Pigeonberry Ash	14	60	
	330	<i>Cryptocarya glaucescens</i>	Jackwood	19	67	
	306	<i>Cryptocarya laevigata</i>	Glossy Laurel	17	57	
	317	<i>Cryptocarya triplinervis</i>	Three-veined Laurel	16	61	
	328	<i>Denhamia celastroides</i>	Orange Boxwood	10	67	
	302	<i>Elaeocarpus obovatus</i>	Hard Quandong	9	54	
	305	<i>Glochidion sumatranum</i>	Umbrella Cheese Tree	10	56	
	307	<i>Guioa semiglauca</i>	Guioa	20	57	
	320	<i>Harpullia pendula</i>	Tulipwood	13	64	
	312	<i>Hedraianthera porphyropetala</i>	Hedraianthera	21	60	
V	325	<i>Hicksbeachia pinnatifolia</i>	Red Bopple Nut	6	65	
	304	<i>Jagera pseudorhus</i>	Foambark	18	56	
V	319	<i>Lepiderema pulchella</i>	Fine-leaved Tuckeroo	21	61	
V	323	<i>Lepiderema pulchella</i>	Fine-leaved Tuckeroo	8	64	
	318	<i>Mallotus discolor</i>	White Kamala	11	61	
	321	<i>Mallotus philippensis</i>	Red Kamala	10	64	
	331	<i>Mischocarpus lachnocarpus</i>	Woolly Pear-fruit	15	67	
	309	<i>Mischocarpus pyriformis</i>	Yellow Pear-fruit	13	58	no label
	332	<i>Planchonella australis</i>	Black Apple	21	68	
	308	<i>Quassia sp. Mt Nardi</i>	Southern Quassia	22	58	Samadera
	327	<i>Rhodamnia maideniana</i>	Smooth Scrub Turpentine	8	66	Myrtle rust
C	313	<i>Rhodamnia rubescens</i>	Scrub Turpentine	23	60	Myrtle rust
	322	<i>Synoum glandulosum</i>	Scentless Rosewood	20	64	
	310	<i>Syzygium oleosum</i>	Blue Lilly Pilly	14	58	
	311	<i>Toechima dasyrrhache</i>	Blunt-leaved Steelwood	10	59	
	324	<i>Wilkiea hugeliana</i>	Veiny Wilkiea	8	64	Wilkiea huegeliana (PlantN

* Threatened Species: C – Critically Endangered, E – Endangered, V - Vulnerable

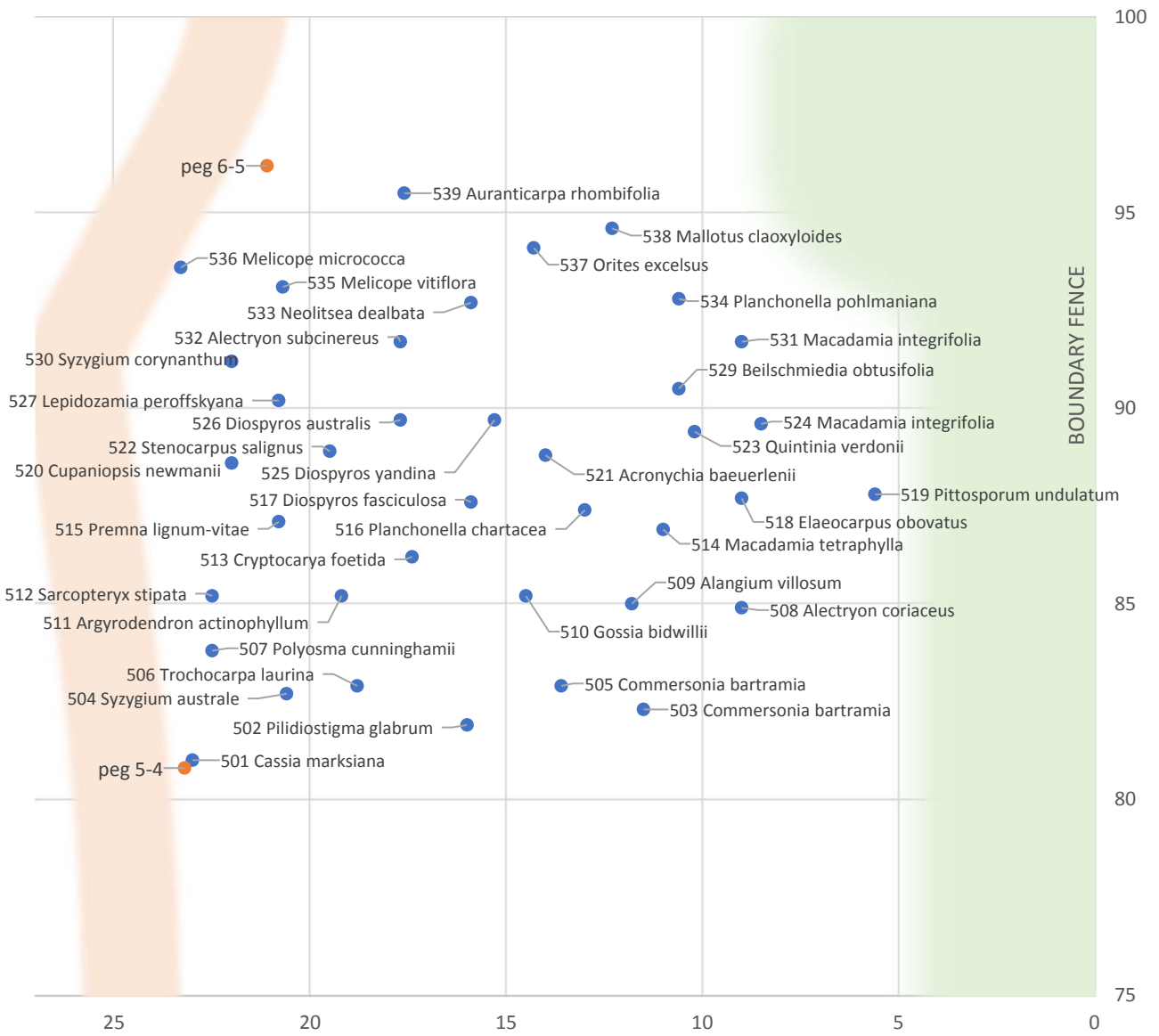
Area 4



Area 4

*	No.	Scientific name	Common name	Fence	Entrance	Notes
E	431	<i>Acronychia littoralis</i>	Scented Acronychia	7	80	
E	433	<i>Acronychia littoralis</i>	Scented Acronychia	10	80	
	406	<i>Acronychia oblongifolia</i>	Common Acronychia	23	70	
	409	<i>Alectryon coriaceus</i>	Beach Alectryon	9	72	
	426	<i>Alphitonia excelsa</i>	Red Ash	17	79	
	401	<i>Alphitonia petriei</i>	White Ash	13	68	
	422	<i>Anopterus macleayanus</i>	Macleay Laurel	16	76	
	430	<i>Argophyllum nullumense</i>	Silver Leaf	18	80	
	407	<i>Arytera divaricata</i>	Coogera	18	71	
	434	<i>Baloghia inophylla</i>	Brush Bloodwood	19	81	= <i>Baloghia lucida</i>
	418	<i>Celtis paniculata</i>	Native Celtis	12	75	
	424	<i>Cinnamomum oliveri</i>	Olivers Sassafras	14	78	
	413	<i>Cupaniopsis anacardioides</i>	Tuckeroo	6	73	
	417	<i>Daphnandra micrantha</i>	Socketwood	18	74	
E	411	<i>Diploglottis campbellii</i>	Small-leaved Tamarind	16	72	
	416	<i>Elattostachys nervosa</i>	Green Tamarind	23	74	
	415	<i>Emmenosperma alphitonioides</i>	Yellow Ash	15	74	
	412	<i>Endiandra discolor</i>	Rose Walnut	14	72	
	429	<i>Endiandra discolor</i>	Rose Walnut	16	80	
V	421	<i>Floydia praealta</i>	Ball Nut	20	76	
	425	<i>Karrabina benthamiana</i>	Red Carabeen	21	79	= <i>Geissois benthamiana</i>
	404	<i>Lepidozamia peroffskyana</i>	Shining Burrawang	21	69	
	432	<i>Meiogyne stenopetala</i>	Fissistigma	14	80	= <i>Fissistigma stenopetala</i>
	403	<i>Mischocarpus australis</i>	Red Pear-fruit	19	69	
V	410	<i>Niemeyera whitei</i>	Rusty Plum	15	72	= <i>Amorphospermum whitei</i>
	423	<i>Orites excelsus</i>	Prickly Ash	22	76	memorial tree
	427	<i>Pseudoweinmannia lachnocarpa</i>	Rose Marara	23	79	
	414	<i>Rhodamnia maideniana</i>	Smooth Scrub Turpentine	9	74	Myrtle rust
	408	<i>Rhodosphaera rhodanthema</i>	Deep Yellowwood	23	71	
	428	<i>Sarcomelicope simplicifolia</i>	Bauerella	12	79	
	419	<i>Sarcopteryx stipata</i>	Steelwood	7	75	
	402	<i>Sterculia quadrifida</i>	Peanut Tree	15	69	
	405	<i>Wilkiea austroqueenslandica</i>	Smooth Wilkiea	8	70	

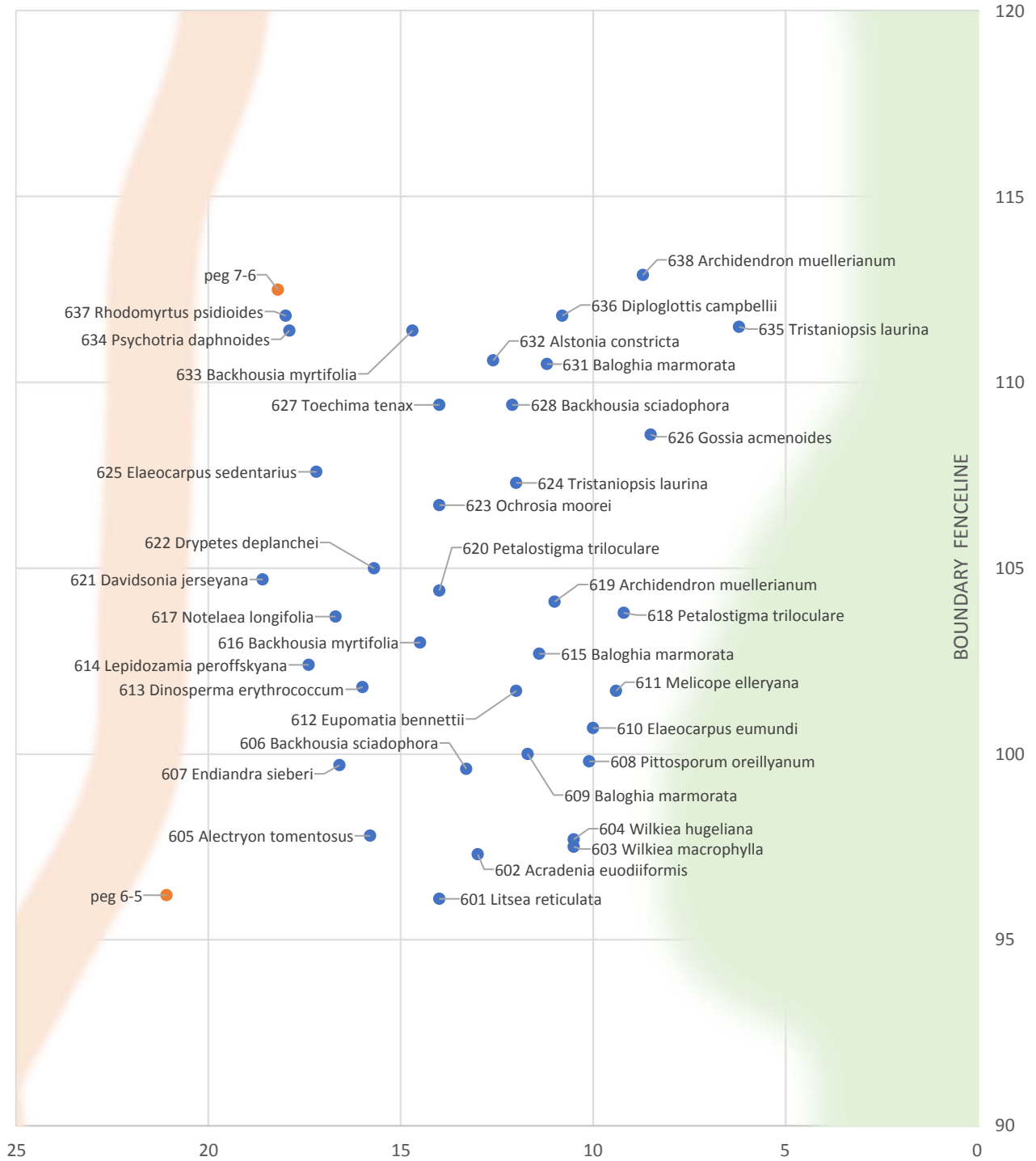
Area 5



Area 5

*	No.	Scientific name	Common name	Fence	Entrance	Notes
	521	<i>Acronychia baeuerlenii</i>	Byron Bay Acronychia	14	89	
	509	<i>Alangium villosum</i>	Muskwood	12	85	
	508	<i>Alectryon coriaceus</i>	Beach Alectryon	9	85	
	532	<i>Alectryon subcinereus</i>	Wild Quince	18	92	
	511	<i>Argyrodendron actinophyllum</i>	Black Booyong	19	85	
	539	<i>Auranticarpa rhombifolia</i>	White Hollywood	18	96	=Pittosporum rhombifolii
	529	<i>Beilschmiedia obtusifolia</i>	Blush Walnut	11	91	
E	501	<i>Cassia marksiana</i>	Mark's Cassia	23	81	=Cassia brewsteri
	503	<i>Commersonia bartramia</i>	Brown Kurrajong	12	82	
	505	<i>Commersonia bartramia</i>	Brown Kurrajong	14	83	
V	513	<i>Cryptocarya foetida</i>	Stinking Cryptocarya	17	86	
	520	<i>Cupaniopsis newmanii</i>	Long-leaved Tuckeroo	22	89	
	526	<i>Diospyros australis</i>	Black Plum	18	90	
E	525	<i>Diospyros yandina</i>	Shiny-leaved Ebony	15	90	=Diospyros major var. eb
	517	<i>Diospyros fasciculosa</i>	Grey Ebony	16	88	
	518	<i>Elaeocarpus obovatus</i>	Hard Quandong	9	88	
	510	<i>Gossia bidwillii</i>	Python Tree	15	85	=Austromyrtus bidwillii
	527	<i>Lepidozamia peroffskyana</i>	Shining Burrawang	21	90	
V	524	<i>Macadamia integrifolia</i>	Smooth-shelled Macadamia	9	90	
V	531	<i>Macadamia integrifolia</i>	Smooth-shelled Macadamia	9	92	
V	514	<i>Macadamia tetraphylla</i>	Rough-shelled Macadamia	11	87	
	538	<i>Mallotus laoxyloides</i>	Green Kamala	12	95	
	536	<i>Melicope micrococca</i>	White Euodia	23	94	
E	535	<i>Melicope vitiflora</i>	Coast Euodia	21	93	
	533	<i>Neolitsea dealbata</i>	White Bolly Gum	16	93	
	537	<i>Orites excelsus</i>	Prickly Ash	14	94	label = Orites excelsa
	502	<i>Pilidostigma glabrum</i>	Plum Myrtle	16	82	
	519	<i>Pittosporum undulatum</i>	Sweet Pittosporum	6	88	
	516	<i>Planchonella chartacea</i>	Thin-leaved Coondoo	13	87	
	534	<i>Planchonella pohlmaniana</i>	Yellow Boxwood	11	93	
	507	<i>Polyosma cunninghamii</i>	Featherwood	23	84	
	515	<i>Premna lignum-vitae</i>	Lignum-vitae	21	87	=Vitex lignum-vitae
	523	<i>Quintinia verdonii</i>	Grey Possomwood	10	89	
	512	<i>Sarcopteryx stipata</i>	Steelwood	23	85	
	522	<i>Stenocarpus salignus</i>	Scrub Beefwood	20	89	
	504	<i>Syzygium australe</i>	Brush Cherry	21	83	
	530	<i>Syzygium corynanthum</i>	Sour Cherry	22	91	
	506	<i>Trochocarpa laurina</i>	Tree Heath	19	83	
Not included						
	641	<i>Macadamia tetraphylla</i>	Macadamia			planted by resident 2013

Area 6



Area 6

	No.	Scientific name	Common name	Fence	Entrance	Notes
	602	<i>Acradenia euodiiiformis</i>	Bonewood	13	97	reshooting
	605	<i>Alectryon tomentosus</i>	Hairy Alectryon	16	98	
	632	<i>Alstonia constricta</i>	Quinine Bush	13	111	regrowth
	619	<i>Archidendron muellerianum</i>	Veiny Lace Flower	11	104	
	638	<i>Archidendron muellerianum</i>	Veiny Lace Flower	9	113	
	616	<i>Backhousia myrtifolia</i>	Grey Myrtle	15	103	
	633	<i>Backhousia myrtifolia</i>	Grey Myrtle	15	111	
	606	<i>Backhousia sciadophora</i>	Shatterwood	13	100	
	628	<i>Backhousia sciadophora</i>	Shatterwood	12	109	poor condition
V	609	<i>Baloghia marmorata</i>	Jointed Baloghia	12	100	
V	615	<i>Baloghia marmorata</i>	Jointed Baloghia	11	103	
V	631	<i>Baloghia marmorata</i>	Jointed Baloghia	11	111	
E	621	<i>Davidsonia jerseyana</i>	Davidson Plum	19	105	
	613	<i>Dinosperma erythroccum</i>	Tingletongue	16	102	=Melicope erythrocca
E	636	<i>Diploglottis campbellii</i>	Small-leaved Tamarind	11	112	
	622	<i>Drypetes deplanchei</i>	Yellow Tulip	16	105	
	610	<i>Elaeocarpus eumundi</i>	Eumundi Quandong	10	101	
E	625	<i>Elaeocarpus sedentarius</i>	Minyon Quandong	17	108	
	607	<i>Endiandra sieberi</i>	Hard Corkwood	17	100	
	612	<i>Eupomatia bennettii</i>	Small Bolwarra	12	102	
	626	<i>Gossia acmenoides</i>	Scrub Ironwood	9	109	
	614	<i>Lepidozamia peroffskyana</i>	Shining Burrawang	17	102	
	601	<i>Litsea reticulata</i>	Bolly Gum	14	96	
	611	<i>Melicope elleryana</i>	Pink Euodia	9	102	
	617	<i>Notelaea longifolia</i>	Large Mock-olive	17	104	
E	623	<i>Ochrosia moorei</i>	Southern Ochrosia	14	107	
	618	<i>Petalostigma triloculare</i>	Long-leaved Bitter Bark	9	104	
	620	<i>Petalostigma triloculare</i>	Long-leaved Bitter Bark	14	104	no post
	608	<i>Pittosporum oreillyanum</i>	Thorny Pittosporum	10	100	
	634	<i>Psychotria daphnoides</i>	Smooth Psychotria	18	111	
C	637	<i>Rhodomyrtus psidioides</i>	Native Guava	18	112	regrowth after rust-infected feller
	627	<i>Toechima tenax</i>	Pitted-leaf Steelwood	14	109	no label
	624	<i>Tristaniopsis laurina</i>	Water Gum	12	107	
	635	<i>Tristaniopsis laurina</i>	Water Gum	6	112	
	604	<i>Wilkiea hugeliana</i>	Veiny Wilkiea	11	98	
	603	<i>Wilkiea macrophylla</i>	Large-leaved Wilkiea	11	98	regrowth

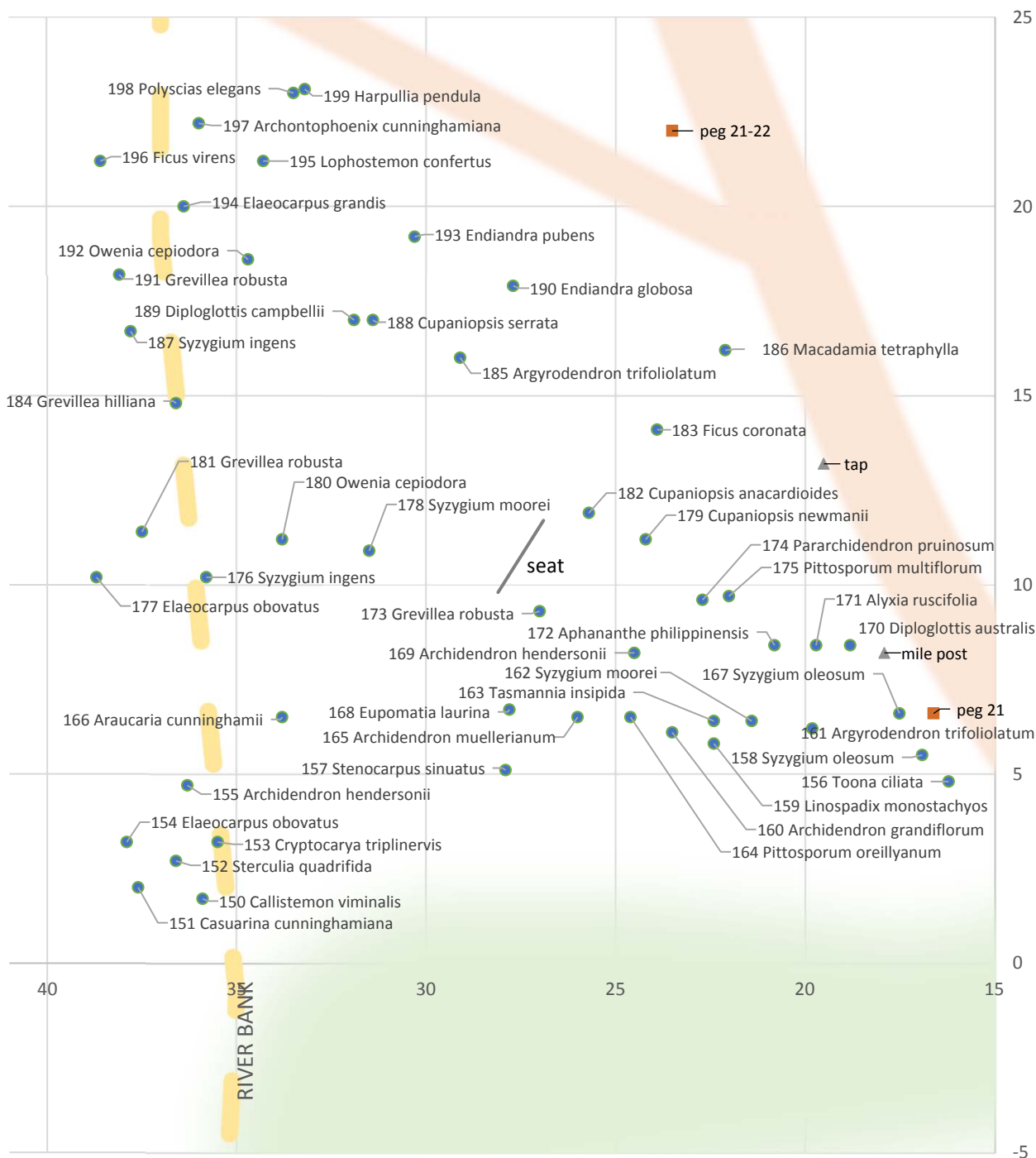
Area 7



Area 7

*	No.	Scientific name	Common name	Fence	Entrance	Notes
	727	<i>Allocasuarina torulosa</i>	Forest Oak	17	130	
	729	<i>Allocasuarina torulosa</i>	Forest Oak	17	132	
	715	<i>Atractocarpus benthamianus</i>	Native Gardenia	12	121	= <i>Randia benthamiana</i>
	701	<i>Austrobuxus swainii</i>	Pink Cherry	15	114	straggly
	731	<i>Banksia robur</i>	Swamp Banksia	18	134	
	708	<i>Brachychiton acerifolius</i>	Flame Tree	14	118	
	735	<i>Corymbia citriodora</i>	Lemon-scented Gum	5	141	
	737	<i>Corymbia maculata</i>	Spotted Gum	13	143	
	739	<i>Daviesia arborea</i>	Golden Pea Tree	7	120	no label
E	702	<i>Diploglottis campbellii</i>	Small-leaved Tamarind	11	115	
	704	<i>Dysoxylum fraserianum</i>	Rosewood	9	115	
	714	<i>Elaeocarpus grandis</i>	Blue Quandong	11	121	
	709	<i>Elaeocarpus kirtonii</i>	Silver Quandong	9	118	
	707	<i>Elaeocarpus obovatus</i>	Hard Quandong	7	117	
E	718	<i>Elaeocarpus williamsianus</i>	Hairy Quandong	13	123	
E	705	<i>Endiandra floydii</i>	Crystal Creek Walnut	14	115	
	734	<i>Eucalyptus pilularis</i>	Blackbutt	4	136	large dead tree
	716	<i>Eucalyptus robusta</i>	Swamp Mahogany	16	122	
V	710	<i>Fontainea australis</i>	Southern Fontainea	14	119	
V	717	<i>Fontainea australis</i>	Southern Fontainea	15	122	
C	721	<i>Fontainea oraria</i>	Lennox Head Fontainea	11	126	
	722	<i>Glochidion sumatranum</i>	Umbrella Cheese Tree	17	128	
	730	<i>Gmelina leichhardtii</i>	White Beech	16	134	
	703	<i>Gossia acmenoides</i>	Scrub Ironwood	12	115	
	719	<i>Hymenosporum flavum</i>	Native Frangipani	14	124	regrowth
	726	<i>Hymenosporum flavum</i>	Native Frangipani	13	129	regrowth
	720	<i>Lepidozamia peroffskyana</i>	Shining Burrawang	16	126	
	723	<i>Lepidozamia peroffskyana</i>	Shining Burrawang	16	129	
	725	<i>Macaranga tanarius</i>	Macaranga	15	129	
	728	<i>Macaranga tanarius</i>	Macaranga	19	131	regrowth
	713	<i>Mischocarpus pyriformis</i>	Yellow Pear-fruit	14	121	
	712	<i>Pittosporum revolutum</i>	Hairy Pittosporum	5	120	no label
	724	<i>Pittosporum revolutum</i>	Hairy Pittosporum	12	129	no label
	711	<i>Rhysotoechia bifoliolata</i>	Twin-leaved Tuckeroo	11	119	
	706	<i>Stenocarpus sinuatus</i>	Firewheel Tree	12	116	
V	733	<i>Syzygium moorei</i>	Coolamon	19	134	
	732	<i>Xanthorrhoea johnsonii</i>	Grass Tree	17	134	
	736	<i>Xanthorrhoea johnsonii</i>	Grass Tree	7	142	

Area 21

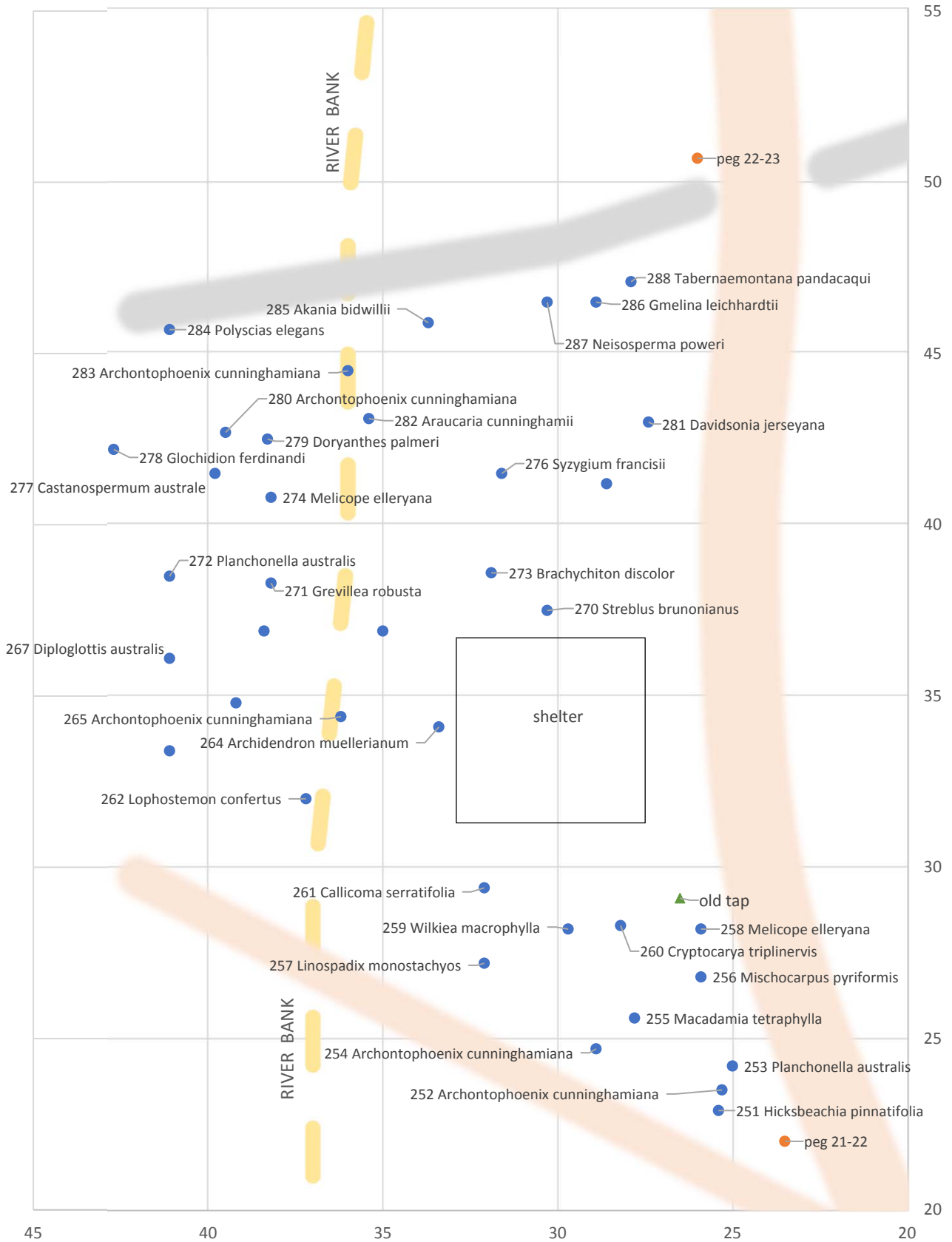


Area 21

*	No.	Scientific name	Common name	Fence	Entrance	Notes
	171	<i>Alyxia ruscifolia</i>	Prickly Alyxia	20	8	
	172	<i>Aphananthe philippinensis</i>	Rough-leaved Elm	21	8	
	166	<i>Araucaria cunninghamii</i>	Hoop Pine	34	7	
	160	<i>Archidendron grandiflorum</i>	Pink Lace Flower	24	6	
V	155	<i>Archidendron hendersonii</i>	White Laceflower	36	5	
V	169	<i>Archidendron hendersonii</i>	White Laceflower	25	8	
	165	<i>Archidendron muellerianum</i>	Veiny Laceflower	26	7	
	197	<i>Archontophoenix cunninghamiana</i>	Bangalow Palm cluster	36	22	
	161	<i>Argyrodendron trifoliolatum</i>	White Booyong	20	6	
	185	<i>Argyrodendron trifoliolatum</i>	White Booyong	29	16	
	150	<i>Callistemon viminalis</i>	Weeping Bottlebrush	36	2	
	151	<i>Casuarina cunninghamiana</i>	River She-oak	38	2	
	153	<i>Cryptocarya triplinervis</i>	Three-veined Laurel	36	3	
	182	<i>Cupaniopsis anacardioides</i>	Tuckeroo	26	12	
	179	<i>Cupaniopsis newmanii</i>	Long-leaved Tuckeroo	24	11	
E	188	<i>Cupaniopsis serrata</i>	Smooth Tuckeroo	31	17	
	170	<i>Diploglottis australis</i>	Native Tamarind	19	8	
E	189	<i>Diploglottis campbellii</i>	Small-leaved Tamarind	32	17	
	194	<i>Elaeocarpus grandis</i>	Blue Quandong	36	20	
	154	<i>Elaeocarpus obovatus</i>	Hard Quandong	38	3	
	177	<i>Elaeocarpus obovatus</i>	Hard Quandong	39	10	
	190	<i>Endiandra globosa</i>	Black Walnut	28	18	
	193	<i>Endiandra pubens</i>	Hairy Walnut	30	19	
	168	<i>Eupomatia laurina</i>	Bolwarra	28	7	
	183	<i>Ficus coronata</i>	Creek Sandpaper Fig	24	14	
	196	<i>Ficus virens</i>	White Fig	39	21	
E	184	<i>Grevillea hilliana</i>	White Yiel Yiel	37	15	
	173	<i>Grevillea robusta</i>	Silky Oak	27	9	
	181	<i>Grevillea robusta</i>	Silky Oak	38	11	
	191	<i>Grevillea robusta</i>	Silky Oak	38	18	
	199	<i>Harpullia pendula</i>	Tulipwood	33	23	
	159	<i>Linospadix monostachyos</i>	Walking Stick Palm	22	6	
	195	<i>Lophostemon confertus</i>	Brush Box	34	21	
V	186	<i>Macadamia tetraphylla</i>	Rough-shelled Macadamia	22	16	
V	180	<i>Owenia cepiodora</i>	Onion Cedar	34	11	
V	192	<i>Owenia cepiodora</i>	Onion Cedar	35	19	
	174	<i>Pararchidendron pruinatum</i>	Snowwood	23	10	
	175	<i>Pittosporum multiflorum</i>	Orange Thorn	22	10	
	164	<i>Pittosporum oreillyanum</i>	Thorny Pittosporum	25	7	
	198	<i>Polyscias elegans</i>	Celery Wood	34	23	
	157	<i>Stenocarpus sinuatus</i>	Firewheel Tree	28	5	
	152	<i>Sterculia quadrifida</i>	Peanut Tree	37	3	
	176	<i>Syzygium ingens</i>	Red Apple	36	10	
	187	<i>Syzygium ingens</i>	Red Apple	38	17	
V	162	<i>Syzygium moorei</i>	Coolamon	21	6	
V	178	<i>Syzygium moorei</i>	Coolamon	32	11	
	158	<i>Syzygium oleosum</i>	Blue Lilly Pilly	17	6	
	167	<i>Syzygium oleosum</i>	Blue Lilly Pilly	18	7	
	163	<i>Tasmannia insipida</i>	Brush Pepperbush	22	6	
	156	<i>Toona ciliata</i>	Red Cedar	16	5	

* Threatened Species: C – Critically Endangered, E – Endangered, V - Vulnerable

Area 22



Area 22

*	No.	Scientific name	Common name	Fence	Entrance	Notes
	285	<i>Akania bidwillii</i>	Turnipwood	34	46	
	282	<i>Araucaria cunninghamii</i>	Hoop Pine	35	43	
	264	<i>Archidendron muellerianum</i>	Veiny Lace Flower	33	34	
	252	<i>Archontophoenix cunninghamiana</i>	Bangalow Palm	25	24	
	254	<i>Archontophoenix cunninghamiana</i>	Bangalow Palm	29	25	
	265	<i>Archontophoenix cunninghamiana</i>	Bangalow Palm	36	34	
	280	<i>Archontophoenix cunninghamiana</i>	Bangalow Palm	40	43	
	283	<i>Archontophoenix cunninghamiana</i>	Bangalow Palm	36	45	
	273	<i>Brachychiton discolor</i>	Lacebark	32	39	
	261	<i>Callicoma serratifolia</i>	Black Wattle	32	29	
	277	<i>Castanospermum australe</i>	Black Bean	40	42	
	260	<i>Cryptocarya triplinervis</i>	Three-veined Laurel	28	28	
E	281	<i>Davidsonia jerseyana</i>	Davidson Plum	27	43	
	267	<i>Diploglottis australis</i>	Native Tamarind	41	36	
V	279	<i>Doryanthes palmeri</i>	Spear Lily	38	43	
	269	<i>Elaeocarpus reticulatus</i>	Blueberry Ash	38	37	
	266	<i>Endiandra globosa</i>	Black Walnut	39	35	
	275	<i>Eucalyptus grandis</i>	Flooded Gum	29	41	
	268	<i>Flindersia bennettii</i>	Bennett's Ash	35	37	
	263	<i>Flindersia xanthoxyla</i>	Long Jack	41	33	
	278	<i>Glochidion ferdinandi</i>	Cheese Tree	43	42	unlabelled on flat
	286	<i>Gmelina leichhardtii</i>	White Beech	29	47	
	271	<i>Grevillea robusta</i>	Silky Oak	38	38	
V	251	<i>Hicksbeachia pinnatifolia</i>	Red Bopple Nut	25	23	
	257	<i>Linospadix monostachyos</i>	Walking Stick Palm	32	27	
	262	<i>Lophostemon confertus</i>	Brush Box	37	32	
V	255	<i>Macadamia tetraphylla</i>	Rough-shelled Macadamia	28	26	
	258	<i>Melicope elleryana</i>	Pink Euodia	26	28	
	274	<i>Melicope elleryana</i>	Pink Euodia	38	41	
	256	<i>Mischocarpus pyriformis</i>	Yellow Pear-fruit	26	27	
	287	<i>Neisosperma poweri</i>	Milkbush	30	47	
	253	<i>Planchonella australis</i>	Black Apple	25	24	
	272	<i>Planchonella australis</i>	Black Apple	41	39	
	284	<i>Polyscias elegans</i>	Celery Wood	41	46	
	270	<i>Streblus brunonianus</i>	Whalebone Tree	30	38	ALA incorrectly renar
	276	<i>Syzygium francisii</i>	Giant Water Gum	32	42	
	288	<i>Tabernaemontana pandacaqui</i>	Banana Bush	28	47	
	259	<i>Wilkiea macrophylla</i>	Large-leaved Wilkiea	30	28	

Area 23

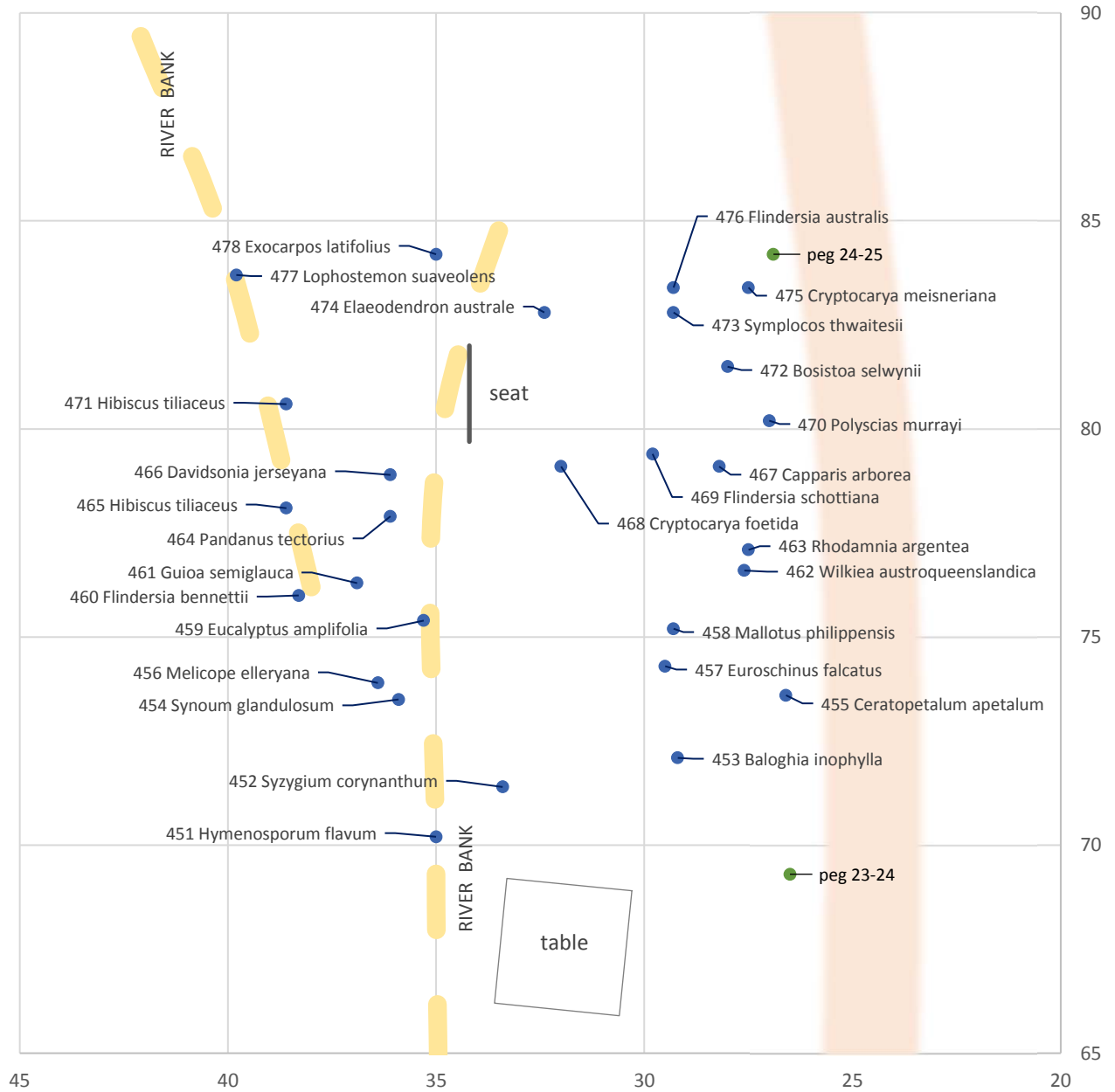


Area 23

*	No.	Scientific name	Common name	Fence	Entrance	Notes
V	384	<i>Acacia bakeri</i>	Marblewood	40	65	
	354	<i>Alphitonia excelsa</i>	Red Ash	26	51	
	368	<i>Alphitonia excelsa</i>	Red Ash	27	56	
	370	<i>Araucaria cunninghamii</i>	Hoop Pine	26	58	
	385	<i>Araucaria cunninghamii</i>	Hoop Pine	28	65	
	361	<i>Archontophoenix cunninghamiana</i>	Bangalow Palm	39	54	
	356	<i>Argyrodendron trifoliolatum</i>	White Booyong	28	52	
	380	<i>Brachychiton discolor</i>	Lacebark	27	64	
	344	<i>Castanospora alphandii</i>	Brown Tamarind	41	49	
E	342	<i>Davidsonia jerseyana</i>	Davidson plum	33	49	unlabelled
E	347	<i>Davidsonia jerseyana</i>	Davidson plum	29	50	
	378	<i>Delonix regia</i>	Poinciana	35	62	host to many Hoya
V	389	<i>Doryanthes palmeri</i>	Spear Lily	40	69	
	382	<i>Dysoxylum rufum</i>	Hairy Rosewood	31	64	
	355	<i>Elaeocarpus grandis</i>	Blue Quandong	39	52	remove
	372	<i>Elaeocarpus grandis</i>	Blue Quandong	29	59	
	381	<i>Elaeocarpus grandis</i>	Blue Quandong	41	64	
	387	<i>Elaeocarpus obovatus</i>	Hard Quandong	29	68	no label
E	350	<i>Endiandra floydii</i>	Crystal Creek Walnut	35	50	
E	363	<i>Endiandra floydii</i>	Crystal Creek Walnut	26	54	
	373	<i>Endiandra pubens</i>	Hairy Walnut	31	59	
	364	<i>Eucalyptus grandis</i>	Flooded Gum	35	54	
	374	<i>Eucalyptus robusta</i>	Swamp Mahogany	37	59	
	369	<i>Ficus coronata</i>	Creek Sandpaper Fig	38	57	
	351	<i>Ficus fraseri</i>	Sandpaper Fig	40	50	
	346	<i>Glochidion ferdinandi</i>	Cheese Tree	45	49	
	367	<i>Glochidion sumatranum</i>	Umbrella Cheese Tree	45	55	
	348	<i>Grevillea robusta</i>	Silky Oak	30	50	
	383	<i>Grevillea robusta</i>	Silky Oak	37	65	
	352	<i>Guioa semiglauca</i>	Guioa	40	51	
	376	<i>Guioa semiglauca</i>	Guioa	37	61	
	386	<i>Guioa semiglauca</i>	Guioa cluster	43	66	
V	343	<i>Hicksbeachia pinnatifolia</i>	Red Bopple Nut	39	49	
V	399	<i>Hicksbeachia pinnatifolia</i>	Red Bopple Nut	37	48	
	379	<i>Myrsine subsessilis</i>	Red Muttonwood	30	63	tiny, = <i>Rapanea subsessilis</i>
	341	<i>Pilidiostigma glabrum</i>	Plum Myrtle	42	47	
	362	<i>Pilidiostigma glabrum</i>	Plum Myrtle	42	54	
	371	<i>Pilidiostigma glabrum</i>	Plum Myrtle	42	58	
	353	<i>Polyscias elegans</i>	Celery Wood	38	51	
	390	<i>Schizomeria ovata</i>	Crab Apple	30	69	
	388	<i>Sloanea australis</i>	Maiden's blush	27	69	
	375	<i>Sterculia quadrifida</i>	Peanut Tree	26	61	
V	365	<i>Syzygium moorei</i>	Coolamon	33	55	memorial
	359	<i>Toona ciliata</i>	Red Cedar	44	53	
	360	<i>Toona ciliata</i>	Red Cedar	31	53	
	377	<i>Toona ciliata</i>	Red Cedar	28	62	
	357	<i>Tristaniaopsis laurina</i>	Water Gum	45	52	
	358	<i>Wilkiea austroqueenslandica</i>	Smooth Wilkiea	43	53	
	345	<i>Wilkiea huegeliana</i>	Veiny Wilkiea	33	49	unlabelled= <i>Wilkiea huegeliana</i>

* Threatened Species: C – Critically Endangered, E – Endangered, V - Vulnerable

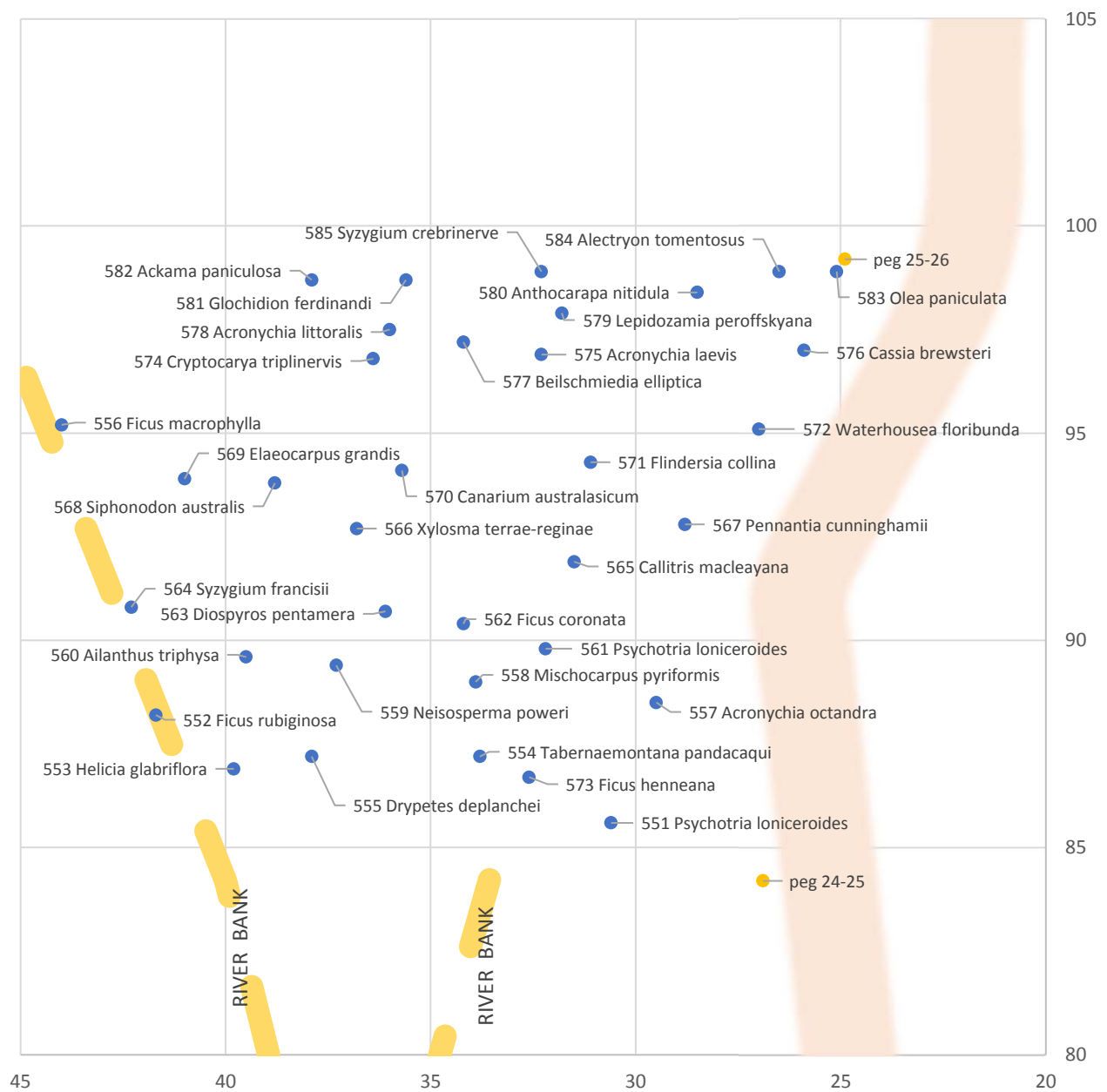
Area 24



Area 24

*	No.	Scientific name	Common name	Fence	Entrance	Notes
	453	<i>Baloghia inophylla</i>	Brush Bloodwood	29	72	
	472	<i>Bosistoa selwynii</i>	Heart-leaved Bosistoa	28	82	
	467	<i>Capparis arborea</i>	Brush Caper Berry	28	79	
	455	<i>Ceratopetalum apetalum</i>	Coachwood	27	74	
V	468	<i>Cryptocarya foetida</i>	Stinking Cryptocarya	32	79	
	475	<i>Cryptocarya meisneriana</i>	Thick-leaved Laurel	28	83	
E	466	<i>Davidsonia jerseyana</i>	Davidson Plum	36	79	
	474	<i>Elaeodendron australe</i>	Red Olive Plum	32	83	=Cassine australis
	459	<i>Eucalyptus amplifolia</i>	Cabbage Gum	35	75	
	457	<i>Euroschinus falcatus</i>	Ribbonwood	30	74	
	478	<i>Exocarpos latifolius</i>	Broad-leaved Ballart	35	84	
	476	<i>Flindersia australis</i>	Australian Teak	29	83	
	460	<i>Flindersia bennettii</i>	Bennett's ash	38	76	
	469	<i>Flindersia schottiana</i>	Cudgerie	30	79	
	461	<i>Guioa semiglauc</i>	Guioa	37	76	
	465	<i>Hibiscus tiliaceus</i>	Cottonwood	39	78	
	471	<i>Hibiscus tiliaceus</i>	Cottonwood	39	81	
	451	<i>Hymenosporum flavum</i>	Native Frangipani	35	70	
	477	<i>Lophostemon suaveolens</i>	Swamp Box	40	84	
	458	<i>Mallotus philippensis</i>	Red Kamala	29	75	
	456	<i>Melicope elleryana</i>	Pink Euodia	36	74	
	464	<i>Pandanus tectorius</i>	Coastal Pandanus	36	78	
	470	<i>Polyscias murrayi</i>	Pencil Cedar	27	80	
	463	<i>Rhodamnia argentea</i>	Malletwood	28	77	
	473	<i>Symplocos thwaitesii</i>	Bluff Hazelwood	29	83	
	454	<i>Synoum glandulosum</i>	Scentless Rosewood	36	74	
	452	<i>Syzygium corynanthum</i>	Sour Cherry	33	71	struggling
	462	<i>Wilkiea austroqueenslandica</i>	Smooth Wilkiea	28	77	lots, unlabelled

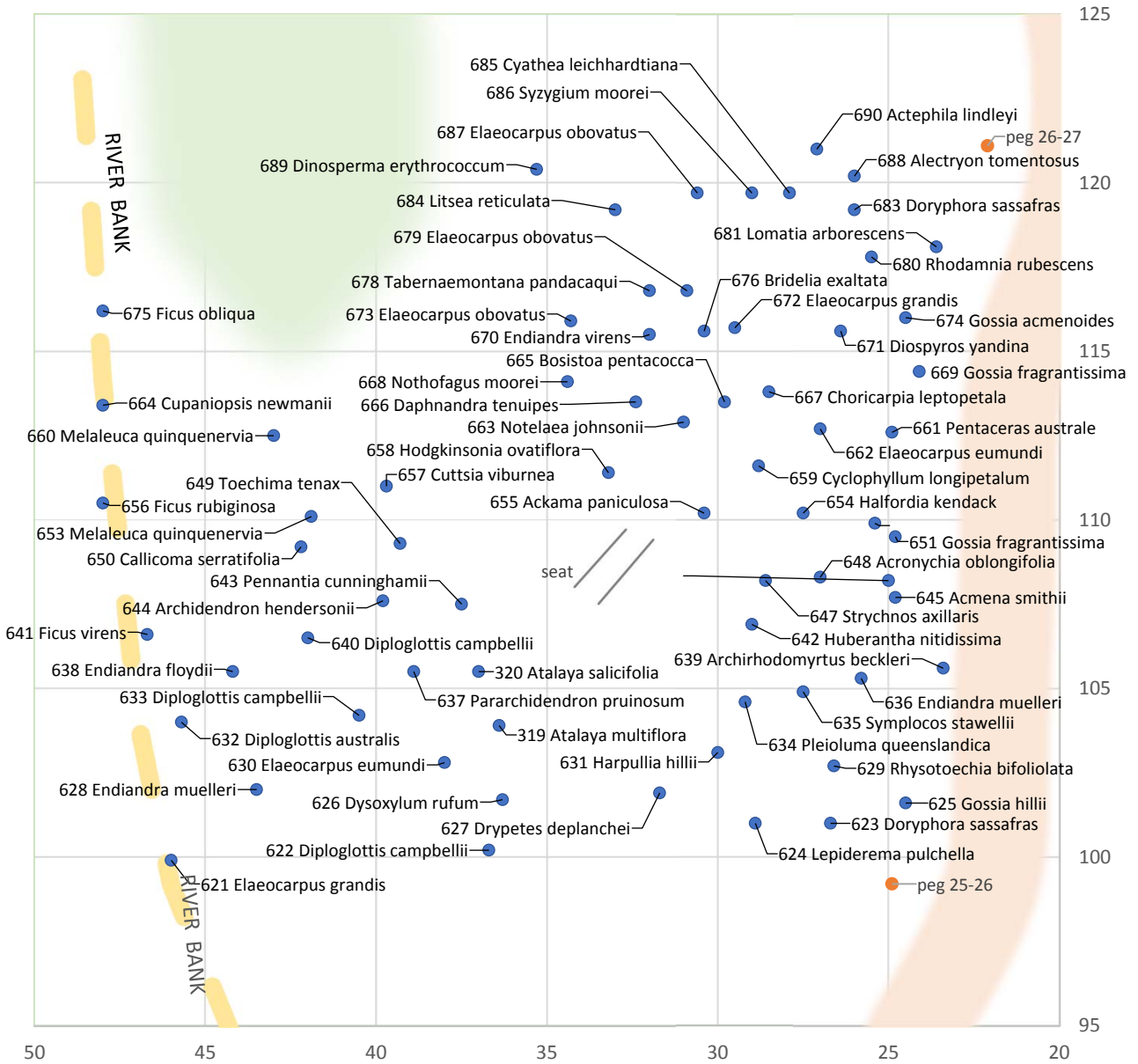
Area 25



Area 25

*	No.	Scientific name	Common name	Fence	Entrance	Notes
	582	<i>Ackama paniculosa</i>	Soft Corkwood	38	99	=Caldcluvia paniculosa
	575	<i>Acronychia laevis</i>	Hard Aspen	32	97	
E	578	<i>Acronychia littoralis</i>	Scented Acronychia	36	98	
	557	<i>Acronychia octandra</i>	Doughwood	30	89	=Melicope octandra
	560	<i>Ailanthus triphysa</i>	White Bean	40	90	
	584	<i>Alectryon tomentosus</i>	Hairy Alectryon	27	99	
	580	<i>Anthocarapa nitidula</i>	Incense Cedar	29	98	
	577	<i>Beilschmiedia elliptica</i>	Grey Walnut	34	97	
	565	<i>Callitris macleayana</i>	Stringybark Pine	32	92	
	570	<i>Canarium australasicum</i>	Mango Bark	36	94	
	576	<i>Cassia brewsteri</i>	Leichhardt Bean	26	97	
	574	<i>Cryptocarya triplinervis</i>	Three-veined Laurel	36	97	
	563	<i>Diospyros pentamera</i>	Myrtle Ebony	36	91	
	555	<i>Drypetes deplanchei</i>	Yellow Tulip	38	87	=Drypetes australasica
	569	<i>Elaeocarpus grandis</i>	Blue Quandong	41	94	
	562	<i>Ficus coronata</i>	Sandpaper Fig	34	90	sapling 1.5m, unlabelled
	573	<i>Ficus henneana</i>	Superb Fig	33	87	=Ficus superba
	556	<i>Ficus macrophylla</i>	Moreton Bay Fig	44	95	
	552	<i>Ficus rubiginosa</i>	Rusty Fig	42	88	
	571	<i>Flindersia collina</i>	Leopard Ash	31	94	
	581	<i>Glochidion ferdinandi</i>	Cheese Tree	36	99	
	553	<i>Helicia glabriflora</i>	Smooth Helicia	40	87	
	579	<i>Lepidozamia peroffskyana</i>	Shining Burrawang	32	98	
	558	<i>Mischocarpus pyriformis</i>	Yellow Pear-fruit	34	89	
	559	<i>Neisosperma poweri</i>	Milkbush	37	89	
	583	<i>Olea paniculata</i>	Native Olive	25	99	
	567	<i>Pennantia cunninghamii</i>	Brown Beech	29	93	
	551	<i>Psychotria loniceroides</i>	Hairy Psychotria	31	86	
	561	<i>Psychotria loniceroides</i>	Hairy Psychotria	32	90	
	568	<i>Siphonodon australis</i>	Ivorywood	39	94	
	585	<i>Syzygium crebrinerve</i>	Purple Cherry	32	99	
	564	<i>Syzygium francisii</i>	Giant Water Gum	42	91	
	554	<i>Tabernaemontana pandacaqui</i>	Banana Bush	34	87	
	572	<i>Waterhousea floribunda</i>	Weeping Lilly Pilly	27	95	
E	566	<i>Xylosma terrae-reginae</i>	Queensland Xylosma	37	93	

Area 26



Area 26

*	No.	Scientific name	Common name	Fence	Entrance	Notes
	679	<i>Elaeocarpus obovatus</i>	Hard Quandong	31	117	
	655	<i>Ackama paniculosa</i>	Soft Corkwood	30	110	= <i>Caldcluvia paniculosa</i>
	645	<i>Acmena smithii</i>	Creek Lilly Pilly	25	108	= <i>Syzygium smithii</i>
	648	<i>Acronychia oblongifolia</i>	Common Acronychia	27	108	
	690	<i>Actephila lindleyi</i>	Actephila	27	121	
	688	<i>Alectryon tomentosus</i>	Hairy Alectryon	26	120	
V	644	<i>Archidendron hendersonii</i>	White Lace Flower	40	108	
	639	<i>Archirhodomyrtus beckleri</i>	Rose Myrtle	23	106	
	319	<i>Atalaya multiflora</i>	Broad-leaved Whitewood	36	104	
	320	<i>Atalaya salicifolia</i>	Brush Whitewood	37	106	
	665	<i>Bosistoa pentacocca</i>	Ferny-leaf Bosistoa	30	114	
	676	<i>Bridelia exaltata</i>	Brush Ironbark	30	116	
	650	<i>Callicoma serratifolia</i>	Black Wattle	42	109	
	667	<i>Choricarpia leptopetala</i>	Brown Myrtle	29	114	
	664	<i>Cupaniopsis newmanii</i>	Long-leaved Tuckeroo	48	113	
	657	<i>Cuttsia viburnea</i>	Cuttsia	40	111	
	685	<i>Cyathea leichhardtiana</i>	Prickly Tree Fern	28	120	
	659	<i>Cyclophyllum longipetalum</i>	Coast Canthium	29	112	= <i>Canthium coprosmoide</i>
	666	<i>Daphnandra tenuipes</i>	Red-flowered Socketwood	32	114	
	689	<i>Dinosperma erythrococcum</i>	Tingletongue	35	120	
E	671	<i>Diospyros yandina</i>	Shiny-leaved Ebony	26	116	= <i>Diospyros major</i> var. <i>et</i>
	632	<i>Diploglottis australis</i>	Native Tamarind	46	104	
E	622	<i>Diploglottis campbellii</i>	Small-leaved Tamarind	37	100	
E	633	<i>Diploglottis campbellii</i>	Small-leaved Tamarind	41	104	
E	640	<i>Diploglottis campbellii</i>	Small-leaved Tamarind	42	107	
	623	<i>Doryphora sassafras</i>	Sassafras	27	101	stunted, insufficient light
	683	<i>Doryphora sassafras</i>	Sassafras	26	119	
	627	<i>Drypetes deplanchei</i>	Yellow Tulip	32	102	
	626	<i>Dysoxylum rufum</i>	Hairy Rosewood	36	102	
	630	<i>Elaeocarpus eumundi</i>	Eumundi Quandong	38	103	no label
	662	<i>Elaeocarpus eumundi</i>	Eumundi Quandong	27	113	
	621	<i>Elaeocarpus grandis</i>	Blue Quandong	46	100	
	672	<i>Elaeocarpus grandis</i>	Blue Quandong	30	116	
	673	<i>Elaeocarpus obovatus</i>	Hard Quandong	34	116	no label
	687	<i>Elaeocarpus obovatus</i>	Hard Quandong	31	120	
E	638	<i>Endiandra floydii</i>	Crystal Creek Walnut	44	106	
E	628	<i>Endiandra muelleri</i>	Green-leaved Rose Walnut	44	102	
E	636	<i>Endiandra muelleri</i>	Green-leaved Rose Walnut	26	105	subsp <i>bracteata</i> ?
	670	<i>Endiandra virens</i>	White Apple	32	116	
	675	<i>Ficus obliqua</i>	Small-leaved Fig	48	116	
	656	<i>Ficus rubiginosa</i>	Rusty Fig	48	111	
	641	<i>Ficus virens</i>	White Fig	47	107	
	674	<i>Gossia acmenoides</i>	Scrub Ironwood	25	116	
E	651	<i>Gossia fragrantissima</i>	Sweet Myrtle	25	110	
E	669	<i>Gossia fragrantissima</i>	Sweet Myrtle	24	114	
	625	<i>Gossia hillii</i>	Scaly Myrtle	25	102	= <i>Austromyrtus hillii</i>
	654	<i>Halfordia kendack</i>	Saffron Heart	28	110	
	631	<i>Harpullia hillii</i>	Blunt-leaved Tulip	30	103	
	658	<i>Hodgkinsonia ovatiflora</i>	Golden Ash	33	111	
V	624	<i>Lepiderema pulchella</i>	Fine-leaved Tuckeroo	29	101	
	684	<i>Litsea reticulata</i>	Bolly Gum	33	119	
	681	<i>Lomatia arborescens</i>	Smooth Lomatia	24	118	
	653	<i>Melaleuca quinquenervia</i>	Broad-leaved Paperbark	42	110	
	660	<i>Melaleuca quinquenervia</i>	Broad-leaved Paperbark	43	113	
	663	<i>Notelaea johnsonii</i>	Veinless Mock-olive	31	113	
	668	<i>Nothofagus moorei</i>	Antarctic Beech	34	114	
	637	<i>Pararchidendron pruinosum</i>	Snowwood	39	106	
	643	<i>Pennantia cunninghamii</i>	Brown Beech	38	108	

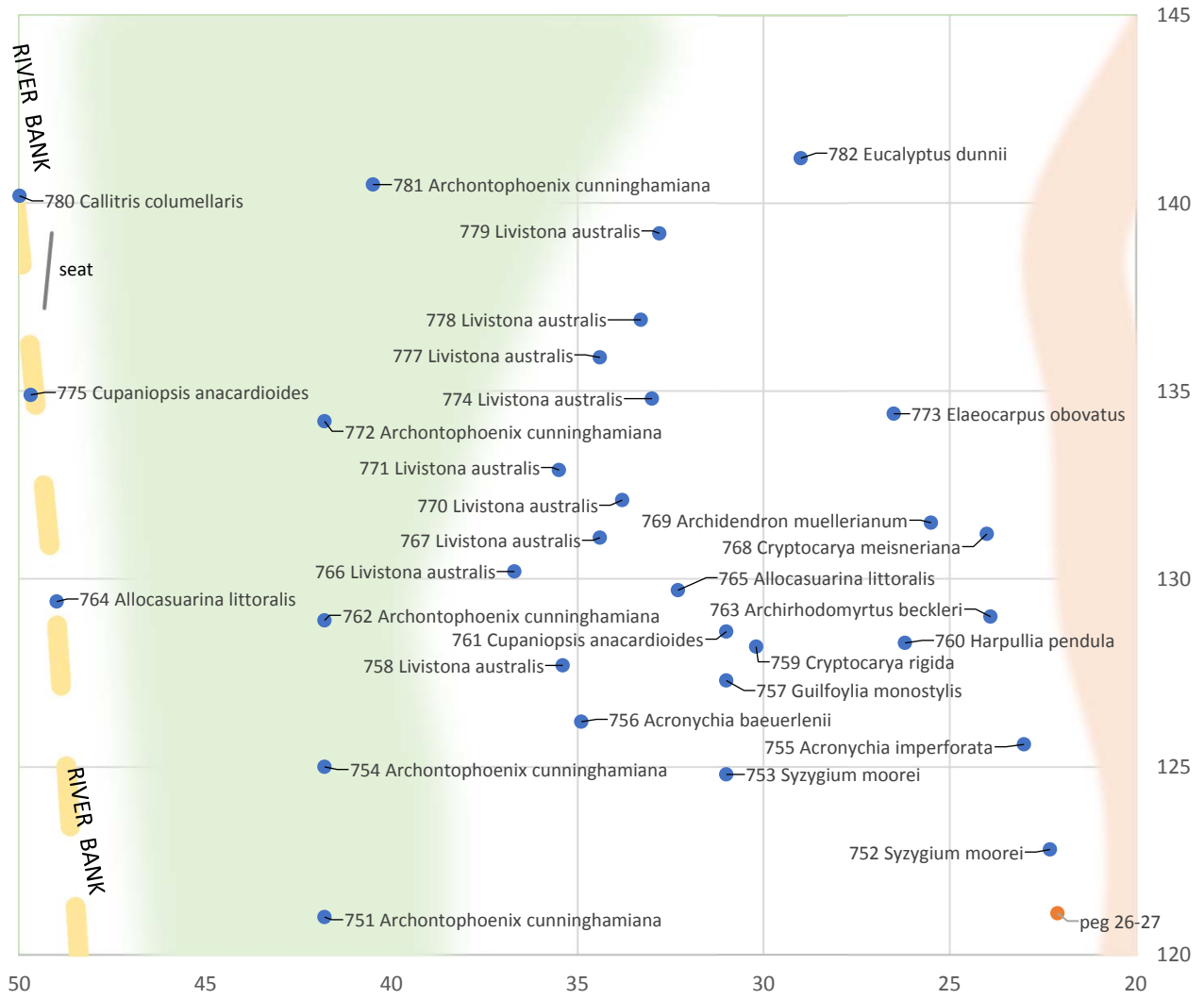
* Threatened Species: C – Critically Endangered, E – Endangered, V - Vulnerable

Area 26

*	No. Scientific name	Common name	Fence	Entrance	Notes
	661 <i>Pentaceras australe</i>	Bastard Crows Ash	25	113	
	642 <i>Huberantha nitidissima</i>	Canary Beech	29	107	= <i>Polyalthia nitidissima</i>
	634 <i>Pleioluma queenslandica</i>	Blush Coondoo	29	105	= <i>Planchonella laurifolia</i>
	680 <i>Rhodamnia rubescens</i>	Scrub Turpentine	26	118	
	629 <i>Rhysotoechia bifoliolata</i>	Twin-leaved Tuckeroo	27	103	
	647 <i>Strychnos axillaris</i>	Strychnine Tree	29	108	
	635 <i>Symplocos stawellii</i>	White Hazelwood	28	105	
V	686 <i>Syzygium moorei</i>	Coolamon	29	120	no label
	678 <i>Tabernaemontana pandacaqui</i>	Banana Bush	32	117	
	649 <i>Toechima tenax</i>	Pitted-leaf Steelwood	39	109	
	652 <i>Toechima tenax</i>	Pitted-leaf Steelwood	25	110	
	646 <i>Wilkiea austroqueenslandica</i>	Smooth Wilkiea	25	108	
	Missing				
	348 <i>Geijera salicifolia</i>	Broad-leaved Brush Wilga			= <i>Geijera latifolia</i>

NEXT MAP →

Area 27



Area 27

*	No. Scientific name	Common name	Fence	Entrance	Notes
	756 <i>Acronychia baeuerlenii</i>		35	126	=Sarcomelicope sim
	755 <i>Acronychia imperforata</i>		23	126	
	764 <i>Allocauarina littoralis</i>		49	129	
	765 <i>Allocauarina littoralis</i>		32	130	
	769 <i>Archidendron muellerianum</i>		26	132	
	763 <i>Archirhodomirtus beckleri</i>		24	129	
	751 <i>Archontophoenix cunninghamiana</i>		42	121	
	754 <i>Archontophoenix cunninghamiana</i>		42	125	
	762 <i>Archontophoenix cunninghamiana</i>		42	129	
	772 <i>Archontophoenix cunninghamiana</i>		42	134	
	781 <i>Archontophoenix cunninghamiana</i>		41	141	
	780 <i>Callitris columellaris</i>		50	140	
	768 <i>Cryptocarya meisneriana</i>		24	131	
	759 <i>Cryptocarya rigida</i>		30	128	
	761 <i>Cupaniopsis anacardioides</i>		31	129	
	775 <i>Cupaniopsis anacardioides</i>		50	135	
	773 <i>Elaeocarpus obovatus</i>		27	134	
	782 <i>Eucalyptus dunnii</i>		29	141	
	757 <i>Guilfoylia monostylis</i>		31	127	
	760 <i>Harpullia pendula</i>		26	128	
	758 <i>Livistona australis</i>		35	128	
	766 <i>Livistona australis</i>		37	130	
	767 <i>Livistona australis</i>		34	131	
	770 <i>Livistona australis</i>		34	132	
	771 <i>Livistona australis</i>		36	133	
	774 <i>Livistona australis</i>		33	135	
	777 <i>Livistona australis</i>		34	136	
	778 <i>Livistona australis</i>		33	137	
	779 <i>Livistona australis</i>		33	139	
V	752 <i>Syzygium moorei</i>		22	123	
V	753 <i>Syzygium moorei</i>		31	125	

Threatened species

Scientific name	Common name	Status	Areas						
<i>Acacia bakeri</i>	Marblewood	Vulnerable	23						
<i>Acronychia littoralis</i>	Scented Acronychia	Endangered	4	25					
<i>Archidendron hendersonii</i>	White Lace Flower	Vulnerable	21	26					
<i>Baloghia marmorata</i>	Jointed Baloghia	Vulnerable	6						
<i>Cassia marksiana</i>	Mark's Cassia	Endangered	5						
<i>Cryptocarya foetida</i>	Stinking Cryptocarya	Vulnerable	2	5	24				
<i>Cupaniopsis serrata</i>	Smooth Tuckeroo	Endangered	21						
<i>Davidsonia jerseyana</i>	Davidson Plum	Endangered	1	6	22	23	24		
<i>Davidsonia johnsonii</i>	Smooth Davidson Plum	Endangered	1						
<i>Diospyros ellipticifolia</i>	Shiny-leaved Ebony	Endangered	5	26					
<i>Diospyros mabacea</i>	Red-fruited Ebony	Endangered	2						
<i>Diploglottis campbellii</i>	Small-leaved Tamarind	Endangered	4	6	7	21	26		
<i>Doryanthes palmeri</i>	Spear Lily	Vulnerable	2	22	23				
<i>Elaeocarpus sedentarius</i>	Minyon Quandong	Endangered	6						
<i>Elaeocarpus williamsianus</i>	Hairy Quandong	Endangered	7						
<i>Endiandra floydii</i>	Crystal Creek Walnut	Endangered	7	23	26				
<i>Endiandra muelleri</i>	Green-leaved Rose Walnut	Endangered	26						
<i>Floydia praealta</i>	Ball Nut	Vulnerable	4						
<i>Fontainea australis</i>	Southern Fontainea	Vulnerable	7						
<i>Fontainea oraria</i>	Coastal Fontainea	Critically Endangered	7						
<i>Gossia fragrantissima</i>	Small-leaved Myrtle	Endangered	2	26					
<i>Grevillea hilliana</i>	White Yiel Yiel	Endangered	1	21					
<i>Hicksbeachia pinnatifolia</i>	Red Bopple Nut	Vulnerable	1	3	22	23			
<i>Lepiderema pulchella</i>	Fine-leaved Tuckeroo	Vulnerable	3	26					
<i>Macadamia integrifolia</i>	Smooth-shelled Macadamia	Vulnerable	5						
<i>Macadamia tetraphylla</i>	Rough-shelled Macadamia	Vulnerable	1	5	21	22			
<i>Melicope vitiflora</i>	Coast Euodia	Endangered	5						
<i>Niemeyera whitei</i>	Rusty Plum	Vulnerable	4						
<i>Ochrosia moorei</i>	Southern Ochrosia	Endangered	6						
<i>Owenia cepiodora</i>	Onion Cedar	Vulnerable	21						
<i>Randia moorei</i>	Spiny Gardenia	Endangered	2						
<i>Rhodamnia rubescens</i>	Scrub Turpentine	Critically Endangered	3						
<i>Rhodomyrtus psidioides</i>	Native Guava	Critically Endangered	6						
<i>Syzygium moorei</i>	Coolamon	Vulnerable	1	7	21	23	26	27	
<i>Xylosma terrae-reginae</i>	Queensland Xylosma	Endangered	25						

Index

Name	AKA	Areas
<i>Acacia bakeri</i>	Marblewood	23
<i>Ackama paniculosa</i>	Soft Corkwood	25 26
<i>Acmena smithii</i>	Creek Lilly Pilly	3 26
<i>Acradenia euodiiformis</i>	Bonewood	6
<i>Acronychia baeuerlenii</i>	Byron Bay Acronychia	5 27
<i>Acronychia imperforata</i>	Beach Acronychia	2 27
<i>Acronychia laevis</i>	Hard Aspen	25
<i>Acronychia littoralis</i>	Scented Acronychia	4 25
<i>Acronychia oblongifolia</i>	Common Acronychia	4 26
<i>Acronychia octandra</i>	Doughwood	25
Acronychia, Beach	<i>Acronychia imperforata</i>	2 27
Acronychia, Byron Bay	<i>Acronychia baeuerlenii</i>	5 27
Acronychia, Common	<i>Acronychia oblongifolia</i>	4 26
Acronychia, Scented	<i>Acronychia littoralis</i>	4 25
Actephila	<i>Actephila lindleyi</i>	26
<i>Actephila lindleyi</i>	Actephila	26
<i>Ailanthus triphysa</i>	White Bean	25
<i>Akania bidwillii</i>	Turnipwood	22
<i>Alangium villosum</i>	Muskwood	5
<i>Alchornea ilicifolia</i>	Native Holly	1 3
<i>Alectryon coriaceus</i>	Beach Alectryon	4 5
<i>Alectryon subcinereus</i>	Wild Quince	5
<i>Alectryon tomentosus</i>	Hairy Alectryon	6 25 26
Alectryon, Beach	<i>Alectryon coriaceus</i>	4 5
Alectryon, Hairy	<i>Alectryon tomentosus</i>	6 25 26
<i>Allocasuarina littoralis</i>	Black She-oak	27
<i>Allocasuarina torulosa</i>	Forest Oak	7
<i>Alphitonia excelsa</i>	Red Ash	4 23
<i>Alphitonia petriei</i>	White Ash	4
<i>Alstonia constricta</i>	Quinine Bush	6
<i>Alyxia ruscifolia</i>	Prickly Alyxia	21
Alyxia, Prickly	<i>Alyxia ruscifolia</i>	21
<i>Anopterus macleayanus</i>	Macleay Laurel	4
Antarctic Beech	<i>Nothofagus moorei</i>	26
<i>Anthocarapa nitidula</i>	Incense Cedar	25
<i>Aphananthe philippinensis</i>	Rough-leaved Elm	3 21
Apple, Black	<i>Planchonella australis</i>	3 22
Apple, Crab	<i>Schizomeria ovata</i>	23
Apple, Red	<i>Syzygium ingens</i>	21
Apple, White	<i>Endiandra virens</i>	26
<i>Araucaria cunninghamii</i>	Hoop Pine	21 22 23
<i>Archidendron grandiflorum</i>	Pink Laceflower	21
<i>Archidendron hendersonii</i>	White Laceflower	21 26
<i>Archidendron muellerianum</i>	Veiny Laceflower	6 21 22 27
<i>Archirhodomyrtus beckleri</i>	Rose Myrtle	27
<i>Archontophoenix cunninghamiana</i>	Bangalow Palm	1 2 21 22 23 27
<i>Argophyllum nullumense</i>	Silver Leaf	4
<i>Argyrodendron actinophyllum</i>	Black Booyong	5
<i>Argyrodendron trifoliolatum</i>	White Booyong	21 23
<i>Arytera distylis</i>	Twin-leaved Coogera	3
<i>Arytera divaricata</i>	Coogera	4
Ash, Bastard Crows	<i>Pentaceras australe</i>	2 26
Ash, Bennett's	<i>Flindersia bennettii</i>	22 24
Ash, Blueberry	<i>Elaeocarpus reticulatus</i>	22
Ash, Golden	<i>Hodgkinsonia ovatiflora</i>	26
Ash, Leopard	<i>Flindersia collina</i>	25
Ash, Pigeonberry	<i>Cryptocarya erythroxylon</i>	3
Ash, Prickly	<i>Orites excelsus</i>	4 5

Index

Name	AKA	Areas
Ash, Red	<i>Alphitonia excelsa</i>	4 23
Ash, White	<i>Alphitonia petriei</i>	4
Ash, Yellow	<i>Emmenosperma alphitonioides</i>	4
Aspen, Hard	<i>Acronychia laevis</i>	25
<i>Atalaya multiflora</i>	Broad-leaved Whitewood	26
<i>Atalaya salicifolia</i>	Brush Whitewood	26
<i>Atractocarpus benthamianus</i>	Native Gardenia	7
<i>Auranticarpa rhombifolia</i>	White Hollywood	5
Australian Teak	<i>Flindersia australis</i>	2 24
<i>Austrobuxus swainii</i>	Pink Cherry	7
<i>Austromyrtus sp. A</i>	Velvet Myrtle	2
<i>Backhousia myrtifolia</i>	Grey Myrtle	6
<i>Backhousia sciadophora</i>	Shatterwood	6
Ball Nut	<i>Floydia praealta</i>	4
Ballart, Broad-leaved	<i>Exocarpos latifolius</i>	24
<i>Baloghia inophylla</i>	Brush Bloodwood	4 24
<i>Baloghia marmorata</i>	Jointed Baloghia	6
Baloghia, Jointed	<i>Baloghia marmorata</i>	6
Banana Bush	<i>Tabernaemontana pandacaqui</i>	22 25 26
Bangalow Palm	<i>Archontophoenix cunninghamiana</i>	1 2 21 22 23 27
<i>Banksia robur</i>	Swamp Banksia	7
Banksia, Swamp	<i>Banksia robur</i>	7
Bark, Mango	<i>Canarium australasicum</i>	25
Bark, White	<i>Endiandra compressa</i>	2
Bastard Crows Ash	<i>Pentaceras australe</i>	2 26
Bat's Wing Coral Tree	<i>Erythrina vespertilio</i>	1
Bauerella	<i>Sarcomelicope simplicifolia</i>	4
Beach Acronychia	<i>Acronychia imperforata</i>	2 27
Beach Alectryon	<i>Alectryon coriaceus</i>	4 5
Bean, Black	<i>Castanospermum australe</i>	1 22
Bean, Leichhardt	<i>Cassia brewsteri</i>	25
Bean, Red	<i>Dysoxylum mollissimum</i>	2
Bean, White	<i>Ailanthus triphysa</i>	25
Beech, Antarctic	<i>Nothofagus moorei</i>	26
Beech, Brown	<i>Pennantia cunninghamii</i>	25 26
Beech, Canary	<i>Huberantha nitidissima</i>	26
Beech, White	<i>Gmelina leichhardtii</i>	1 7 22
Beefwood, Scrub	<i>Stenocarpus salignus</i>	5
<i>Beilschmiedia elliptica</i>	Grey Walnut	25
<i>Beilschmiedia obtusifolia</i>	Blush Walnut	5
Bennett's Ash	<i>Flindersia bennettii</i>	22 24
Bitter Bark, Long-leaved	<i>Petalostigma triloculare</i>	6
Black Apple	<i>Planchonella australis</i>	3 22
Black Bean	<i>Castanospermum australe</i>	1 22
Black Booyong	<i>Argyrodendron actinophyllum</i>	5
Black Plum	<i>Diospyros australis</i>	5
Black She-oak	<i>Allocasuarina littoralis</i>	27
Black Walnut	<i>Endiandra globosa</i>	21 22
Black Wattle	<i>Callicoma serratifolia</i>	22 26
Blackbutt	<i>Eucalyptus pilularis</i>	7
Bloodwood, Brush	<i>Baloghia inophylla</i>	4 24
Blue Lilly Pilly	<i>Syzygium oleosum</i>	3 21
Blue Quandong	<i>Elaeocarpus grandis</i>	1 7 21 23 25 26
Blueberry Ash	<i>Elaeocarpus reticulatus</i>	22
Bluff Hazelwood	<i>Symplocos thwaitesii</i>	24
Blunt-leaved Steelwood	<i>Toechima dasyrrhache</i>	1 3
Blunt-leaved Tulip	<i>Harpullia hillii</i>	26
Blush Coondoo	<i>Pleioluma queenslandica</i>	26

Index

Name	AKA	Areas
Blush Walnut	<i>Beilschmiedia obtusifolia</i>	5
Blush, Maiden's	<i>Sloanea australis</i>	1 23
Bolly Gum	<i>Litsea reticulata</i>	6 26
Bolly Gum, White	<i>Neolitsea dealbata</i>	5
Bolwarra	<i>Eupomatia laurina</i>	1 21
Bolwarra, Small	<i>Eupomatia bennettii</i>	6
Bonewood	<i>Acradenia euodiiiformis</i>	6
Booyong, Black	<i>Argyrodendron actinophyllum</i>	5
Booyong, White	<i>Argyrodendron trifoliolatum</i>	21 23
Bopple Nut, Red	<i>Hicksbeachia pinnatifolia</i>	1 3 22 23
<i>Bosistoa pentacocca</i>	Ferny-leaf Bosistoa	26
<i>Bosistoa selwynii</i>	Heart-leaved Bosistoa	24
Bosistoa, Ferny-leaf	<i>Bosistoa pentacocca</i>	26
Bosistoa, Heart-leaved	<i>Bosistoa selwynii</i>	24
Bottlebrush, Weeping	<i>Callistemon viminalis</i>	21
Box, Brush	<i>Lophostemon confertus</i>	1 2 21 22
Box, Swamp	<i>Lophostemon suaveolens</i>	24
Boxwood, Orange	<i>Denhamia celastroides</i>	3
Boxwood, Yellow	<i>Planchonella pohlmaniana</i>	5
<i>Brachychiton acerifolius</i>	Flame Tree	7
<i>Brachychiton discolor</i>	Lacebark	1 22 23
<i>Bridelia exaltata</i>	Brush Ironbark	26
Broad-leaved Ballart	<i>Exocarpos latifolius</i>	24
Broad-leaved Paperbark	<i>Melaleuca quinquenervia</i>	26
Broad-leaved Whitewood	<i>Atalaya multiflora</i>	26
Brown Beech	<i>Pennantia cunninghamii</i>	25 26
Brown Kurrajong	<i>Commersonia bartramia</i>	5
Brown Myrtle	<i>Choricarpia leptopetala</i>	26
Brown Pine	<i>Podocarpus elatus</i>	1
Brown Tamarind	<i>Castanospora alphanthii</i>	1 2 23
Brush Bloodwood	<i>Baloghia inophylla</i>	4 24
Brush Box	<i>Lophostemon confertus</i>	1 2 21 22
Brush Caper Berry	<i>Capparis arborea</i>	24
Brush Cherry	<i>Syzygium australe</i>	5
Brush Ironbark	<i>Bridelia exaltata</i>	26
Brush Muttonwood	<i>Myrsine howittiana</i>	1
Brush Pepperbush	<i>Tasmannia insipida</i>	21
Brush Whitewood	<i>Atalaya salicifolia</i>	26
Burrawang, Shining	<i>Lepidozamia peroffskyana</i>	1 4 5 6 7 25
Byron Bay Acronychia	<i>Acronychia baeuerlenii</i>	5 27
Cabbage Gum	<i>Eucalyptus amplifolia</i>	24
Cabbage-tree Palm	<i>Livistona australis</i>	27
<i>Callicoma serratifolia</i>	Black Wattle	22 26
<i>Callistemon viminalis</i>	Weeping Bottlebrush	21
<i>Callitris columellaris</i>	Coastal Cypress Pine	27
<i>Callitris macleayana</i>	Stringybark Pine	25
<i>Canarium australasicum</i>	Mango Bark	25
Canary Beech	<i>Huberantha nitidissima</i>	26
Canthium, Coast	<i>Cyclophyllum longipetalum</i>	26
Caper Berry, Brush	<i>Capparis arborea</i>	24
<i>Capparis arborea</i>	Brush Caper Berry	24
Carabeen, Red	<i>Karrabina benthamiana</i>	4
Carabeen, Yellow	<i>Sloanea woollsii</i>	1
<i>Cassia brewsteri</i>	Leichhardt Bean	25
<i>Cassia marksiana</i>	Mark's Cassia	5
Cassia, Mark's	<i>Cassia marksiana</i>	5
<i>Castanospermum australe</i>	Black Bean	1 22
<i>Castanospora alphanthii</i>	Brown Tamarind	1 2 23

Index

Name	AKA	Areas
<i>Casuarina cunninghamiana</i>	River She-oak	21
Cedar, Incense	<i>Anthocarapa nitidula</i>	25
Cedar, Onion	<i>Owenia cepiodora</i>	21
Cedar, Pencil	<i>Polyscias murrayi</i>	24
Cedar, Red	<i>Toona ciliata</i>	1 21 23
Celery Wood	<i>Polyscias elegans</i>	21 22 23
<i>Celtis paniculata</i>	Native Celtis	4
Celtis, Native	<i>Celtis paniculata</i>	4
<i>Ceratopetalum apetalum</i>	Coachwood	24
Cheese Tree	<i>Glochidion ferdinandi</i>	22 23 25
Cheese Tree, Umbrella	<i>Glochidion sumatranum</i>	3 7 23
Cherry, Brush	<i>Syzygium australe</i>	5
Cherry, Pink	<i>Austrobuxus swainii</i>	7
Cherry, Purple	<i>Syzygium crebrinerve</i>	25
Cherry, Sour	<i>Syzygium corynanthum</i>	5 24
<i>Choricarpia leptopetala</i>	Brown Myrtle	26
<i>Cinnamomum oliveri</i>	Olivers Sassafras	4
<i>Cinnamomum virens</i>	Red-barked Sassafras	3
<i>Cleistanthus cunninghamii</i>	Omega	1
Coachwood	<i>Ceratopetalum apetalum</i>	24
Coast Canthium	<i>Cyclophyllum longipetalum</i>	26
Coast Euodia	<i>Melicope vitiflora</i>	5
Coastal Cypress Pine	<i>Callitris columellaris</i>	27
Coastal Pandanus	<i>Pandanus tectorius</i>	24
<i>Commersonia bartramia</i>	Brown Kurrajong	5
Common Acronychia	<i>Acronychia oblongifolia</i>	4 26
Coogera	<i>Arytera divaricata</i>	4
Coogera, Twin-leaved	<i>Arytera distylis</i>	3
Coolamon	<i>Syzygium moorei</i>	1 7 21 23 26 27
Coondoo, Blush	<i>Pleioluma queenslandica</i>	26
Coondoo, Thin-leaved	<i>Planchonella chartacea</i>	5
Coral Tree, Bat's Wing	<i>Erythrina vespertilio</i>	1
Corkwood, Hard	<i>Endiandra sieberi</i>	6
Corkwood, Soft	<i>Ackama paniculosa</i>	25 26
<i>Corymbia citriodora</i>	Lemon-scented Gum	7
<i>Corymbia maculata</i>	Spotted Gum	7
Cottonwood	<i>Hibiscus tiliaceus</i>	24
Crab Apple	<i>Schizomeria ovata</i>	23
Creek Lilly Pilly	<i>Acmena smithii</i>	3 26
Creek Sandpaper Fig	<i>Ficus coronata</i>	1 21 23
Crows Ash, Bastard	<i>Pentaceras australe</i>	2 26
<i>Cryptocarya erythroxylon</i>	Pigeonberry Ash	3
<i>Cryptocarya foetida</i>	Stinking Cryptocarya	2 5 24
<i>Cryptocarya glaucescens</i>	Jackwood	3
<i>Cryptocarya laevigata</i>	Glossy Laurel	1 3
<i>Cryptocarya meisneriana</i>	Thick-leaved Laurel	24 27
<i>Cryptocarya microneura</i>	Murrogun	2
<i>Cryptocarya obovata</i>	Pepperberry	2
<i>Cryptocarya rigida</i>	Rose Maple	1 27
<i>Cryptocarya triplinervis</i>	Three-veined Laurel	2 3 21 22 25
Cryptocarya, Stinking	<i>Cryptocarya foetida</i>	2 5 24
Crystal Creek Walnut	<i>Endiandra floydii</i>	7 23 26
Cudgerie	<i>Flindersia schottiana</i>	24
<i>Cupaniopsis anacardioides</i>	Tuckeroo	1 4 21 27
<i>Cupaniopsis newmanii</i>	Long-leaved Tuckeroo	5 21 26
<i>Cupaniopsis serrata</i>	Smooth Tuckeroo	21
Cuttsia	<i>Cuttsia viburnea</i>	26
<i>Cuttsia viburnea</i>	Cuttsia	26

Index

Name	AKA	Areas
<i>Cyathea leichhardtiana</i>	Prickly Tree Fern	26
<i>Cyclophyllum longipetalum</i>	Coast Canthium	26
Cypress Pine, Coastal	<i>Callitris columellaris</i>	27
<i>Daphnandra micrantha</i>	Socketwood	4
<i>Daphnandra tenuipes</i>	Red-flowered Socketwood	26
Davidson Plum	<i>Davidsonia jerseyana</i>	1 6 22 23 24
Davidson Plum, Smooth	<i>Davidsonia johnsonii</i>	1
<i>Davidsonia jerseyana</i>	Davidson Plum	1 6 22 23 24
<i>Davidsonia johnsonii</i>	Smooth Davidson Plum	1
<i>Daviesia arborea</i>	Golden Pea Tree	7
Deep Yellowwood	<i>Rhodosphaera rhodanthema</i>	4
<i>Delonix regia</i>	Poinciana	23
<i>Denhamia celastroides</i>	Orange Boxwood	3
<i>Dinosperma erythroccum</i>	Tingletongue	6 26
<i>Diospyros australis</i>	Black Plum	5
<i>Diospyros fasciculosa</i>	Grey Ebony	5
<i>Diospyros mabacea</i>	Red-fruited Ebony	2
<i>Diospyros pentamera</i>	Myrtle Ebony	25
<i>Diospyros yandina</i>	Shiny-leaved Ebony	5 26
<i>Diploglottis australis</i>	Native Tamarind	21 22 26
<i>Diploglottis campbellii</i>	Small-leaved Tamarind	4 6 7 21 26
<i>Doryanthes palmeri</i>	Spear Lily	2 22 23 26
<i>Doryphora sassafras</i>	Sassafras	26
Doughwood	<i>Acronychia octandra</i>	25
<i>Drypetes deplanchei</i>	Yellow Tulip	6 25 26
<i>Dysoxylum fraserianum</i>	Rosewood	2 7
<i>Dysoxylum mollissimum</i>	Red Bean	2
<i>Dysoxylum rufum</i>	Hairy Rosewood	23 26
Ebony, Grey	<i>Diospyros fasciculosa</i>	5
Ebony, Myrtle	<i>Diospyros pentamera</i>	25
Ebony, Red-fruited	<i>Diospyros mabacea</i>	2
Ebony, Shiny-leaved	<i>Diospyros yandina</i>	5 26
<i>Elaeocarpus eumundi</i>	Eumundi Quandong	6 26
<i>Elaeocarpus grandis</i>	Blue Quandong	1 7 21 23 25 26
<i>Elaeocarpus kirtonii</i>	Silver Quandong	7
<i>Elaeocarpus obovatus</i>	Hard Quandong	3 5 7 21 23 26 27
<i>Elaeocarpus reticulatus</i>	Blueberry Ash	22
<i>Elaeocarpus sedentarius</i>	Minyon Quandong	6
<i>Elaeocarpus williamsianus</i>	Hairy Quandong	7
<i>Elaeodendron australe</i>	Red Olive Plum	24
<i>Elattostachys nervosa</i>	Green Tamarind	2 4
<i>Elattostachys xylocarpa</i>	White Tamarind	2
Elm, Rough-leaved	<i>Aphananthe philippinensis</i>	3 21
<i>Emmenosperma alphonoides</i>	Yellow Ash	4
<i>Endiandra compressa</i>	White Bark	2
<i>Endiandra discolor</i>	Rose Walnut	4
<i>Endiandra floydii</i>	Crystal Creek Walnut	7 23 26
<i>Endiandra globosa</i>	Black Walnut	21 22
<i>Endiandra muelleri</i>	Green-leaved Rose Walnut	26
<i>Endiandra pubens</i>	Hairy Walnut	21 23
<i>Endiandra sieberi</i>	Hard Corkwood	6
<i>Endiandra virens</i>	White Apple	26
<i>Erythrina vespertilio</i>	Bat's Wing Coral Tree	1
<i>Eucalyptus amplifolia</i>	Cabbage Gum	24
<i>Eucalyptus dunnii</i>	White Gum	27
<i>Eucalyptus grandis</i>	Flooded Gum	22 23
<i>Eucalyptus microcorys</i>	Tallowwood	27
<i>Eucalyptus pilularis</i>	Blackbutt	7

Index

Name	AKA	Areas
<i>Eucalyptus robusta</i>	Swamp Mahogany	7 23
Eumundi Quandong	<i>Elaeocarpus eumundi</i>	6 26
Euodia, Coast	<i>Melicope vitiflora</i>	5
Euodia, Pink	<i>Melicope elleryana</i>	1 6 22 24
Euodia, White	<i>Melicope micrococca</i>	5
<i>Eupomatia bennettii</i>	Small Bolwarra	6
<i>Eupomatia laurina</i>	Bolwarra	1 21
<i>Euroschinus falcatus</i>	Ribbonwood	24
<i>Exocarpos latifolius</i>	Broad-leaved Ballart	24
Featherwood	<i>Polyosma cunninghamii</i>	5
Ferny-leaf Bosistoa	<i>Bosistoa pentacocca</i>	26
<i>Ficus coronata</i>	Creek Sandpaper Fig	1 21 23
<i>Ficus fraseri</i>	Sandpaper Fig	23 25
<i>Ficus henneana</i>	Superb Fig	25
<i>Ficus macrophylla</i>	Moreton Bay Fig	25
<i>Ficus obliqua</i>	Small-leaved Fig	26
<i>Ficus rubiginosa</i>	Rusty Fig	25 26
<i>Ficus virens</i>	White Fig	21 26
Fig, Creek Sandpaper	<i>Ficus coronata</i>	1 21 23
Fig, Moreton Bay	<i>Ficus macrophylla</i>	25
Fig, Rusty	<i>Ficus rubiginosa</i>	25 26
Fig, Sandpaper	<i>Ficus fraseri</i>	23 25
Fig, Small-leaved	<i>Ficus obliqua</i>	26
Fig, Superb	<i>Ficus henneana</i>	25
Fig, White	<i>Ficus virens</i>	21 26
Fine-leaved Tuckeroo	<i>Lepiderema pulchella</i>	3 26
Firewheel Tree	<i>Stenocarpus sinuatus</i>	7 21
Fissistigma	<i>Meiogyne stenopetala</i>	4
Flame Tree	<i>Brachychiton acerifolius</i>	7
<i>Flindersia australis</i>	Australian Teak	2 24
<i>Flindersia bennettii</i>	Bennett's Ash	22 24
<i>Flindersia collina</i>	Leopard Ash	25
<i>Flindersia schottiana</i>	Cudgerie	24
<i>Flindersia xanthoxyla</i>	Long Jack	1 22
Flooded Gum	<i>Eucalyptus grandis</i>	22 23
<i>Floydia praealta</i>	Ball Nut	4
Foambark	<i>Jagera pseudorhus</i>	3
<i>Fontainea australis</i>	Southern Fontainea	7
<i>Fontainea oraria</i>	Lennox Head Fontainea	7
Fontainea, Lennox Head	<i>Fontainea oraria</i>	7
Fontainea, Southern	<i>Fontainea australis</i>	7
Forest Oak	<i>Allocasuarina torulosa</i>	7
Frangipani, Native	<i>Hymenosporum flavum</i>	1 7 24
Gardenia, Native	<i>Atractocarpus benthamianus</i>	7
Gardenia, Spiny	<i>Randia moorei</i>	2
Giant Water Gum	<i>Syzygium francisii</i>	22 25
<i>Glochidion ferdinandi</i>	Cheese Tree	22 23 25
<i>Glochidion sumatranum</i>	Umbrella Cheese Tree	3 7 23
Glossy Laurel	<i>Cryptocarya laevigata</i>	1 3
<i>Gmelina leichhardtii</i>	White Beech	1 7 22
Golden Ash	<i>Hodgkinsonia ovatiflora</i>	26
Golden Pea Tree	<i>Daviesia arborea</i>	7
<i>Gossia acmenoides</i>	Scrub Ironwood	6 7 26
<i>Gossia bidwillii</i>	Python Tree	5
<i>Gossia fragrantissima</i>	Sweet Myrtle	2 26
<i>Gossia hillii</i>	Scaly Myrtle	26
Grass Tree	<i>Xanthorrhoea johnsonii</i>	7
Green Kamala	<i>Mallotus claoxyloides</i>	5

Index

Name	AKA	Areas
Green Tamarind	<i>Elattostachys nervosa</i>	2 4
Green-leaved Rose Walnut	<i>Endiandra muelleri</i>	26
<i>Grevillea hilliana</i>	White Yiel Yiel	1 21
<i>Grevillea robusta</i>	Silky Oak	21 22 23
Grey Ebony	<i>Diospyros fasciculosa</i>	5
Grey Myrtle	<i>Backhousia myrtifolia</i>	6
Grey Possomwood	<i>Quintinia verdonii</i>	5
Grey Walnut	<i>Beilschmiedia elliptica</i>	25
Guava, Native	<i>Rhodomyrtus psidioides</i>	6
<i>Guilfoylia monostylis</i>	Scrub Ooline	27
Guioa	<i>Guioa semiglauca</i>	3 23 24
<i>Guioa semiglauca</i>	Guioa	3 23 24
Gum, Bolly	<i>Litsea reticulata</i>	6 26
Gum, Brown Bolly	<i>Litsea australis</i>	5
Gum, Cabbage	<i>Eucalyptus amplifolia</i>	24
Gum, Flooded	<i>Eucalyptus grandis</i>	22 23
Gum, Giant Water	<i>Syzygium francisii</i>	22 25
Gum, Lemon-scented	<i>Corymbia citriodora</i>	7
Gum, Spotted	<i>Corymbia maculata</i>	7
Gum, Water	<i>Tristaniopsis laurina</i>	2 6 23
Gum, White	<i>Eucalyptus dunnii</i>	27
Gum, White Bolly	<i>Neolitsea dealbata</i>	5
Hairy Alectryon	<i>Alectryon tomentosus</i>	6 25 26
Hairy Pittosporum	<i>Pittosporum revolutum</i>	7
Hairy Psychotria	<i>Psychotria loniceroides</i>	25
Hairy Quandong	<i>Elaeocarpus williamsianus</i>	7
Hairy Rosewood	<i>Dysoxylum rufum</i>	23 26
Hairy Walnut	<i>Endiandra pubens</i>	21 23
<i>Halfordia kendack</i>	Saffron Heart	26
Hard Aspen	<i>Acronychia laevis</i>	25
Hard Corkwood	<i>Endiandra sieberi</i>	6
Hard Quandong	<i>Elaeocarpus obovatus</i>	3 5 7 21 23 26 27
<i>Harpullia hillii</i>	Blunt-leaved Tulip	26
<i>Harpullia pendula</i>	Tulipwood	3 21 27
Hazelwood, Bluff	<i>Symplocos thwaitesii</i>	24
Hazelwood, White	<i>Symplocos stawellii</i>	26
Heart-leaved Bosistoa	<i>Bosistoa selwynii</i>	24
Heath, Tree	<i>Trochocarpa laurina</i>	5
Hedraianthera	<i>Hedraianthera porphyropetala</i>	3 25 24
<i>Hedraianthera porphyropetala</i>	Hedraianthera	3 25 24
<i>Helicia glabriflora</i>	Smooth Helicia	25
Helicia, Smooth	<i>Helicia glabriflora</i>	25
<i>Hibiscus tiliaceus</i>	Cottonwood	24
<i>Hicksbeachia pinnatifolia</i>	Red Bopple Nut	1 3 22 23
<i>Hodgkinsonia ovatiflora</i>	Golden Ash	26
Holly, Native	<i>Alchornea ilicifolia</i>	1 3
Hollywood, White	<i>Auranticarpa rhombifolia</i>	5
Hoop Pine	<i>Araucaria cunninghamii</i>	21 22 23
<i>Huberantha nitidissima</i>	Canary Beech	26
<i>Hymenosporum flavum</i>	Native Frangipani	1 7 24
Incense Cedar	<i>Anthocarapa nitidula</i>	25
Ironbark, Brush	<i>Bridelia exaltata</i>	26
Ironwood, Scrub	<i>Gossia acmenoides</i>	6 7 26
Ivorywood	<i>Siphonodon australis</i>	25
Jackwood	<i>Cryptocarya glaucescens</i>	3
<i>Jagera pseudorhus</i>	Foambark	3
Jointed Baloghia	<i>Baloghia marmorata</i>	6
Kamala, Green	<i>Mallotus claoxyloides</i>	5

Index

Name	AKA	Areas
Kamala, Red	<i>Mallotus philippensis</i>	3 24
Kamala, White	<i>Mallotus discolor</i>	3
<i>Karrabina benthamiana</i>	Red Carabeen	4
Kurrajong, Brown	<i>Commersonia bartramia</i>	5
Lacebark	<i>Brachychiton discolor</i>	1 22 23
Laceflower, Pink	<i>Archidendron grandiflorum</i>	21
Laceflower, Veiny	<i>Archidendron muellerianum</i>	6 21 22 27
Laceflower, White	<i>Archidendron hendersonii</i>	21 26
Large Mock-olive	<i>Notelaea longifolia</i>	6
Large-leaved Wilklea	<i>Wilkiea macrophylla</i>	6 22
Laurel, Glossy	<i>Cryptocarya laevigata</i>	1 3
Laurel, Macleay	<i>Anopterus macleayanus</i>	4
Laurel, Thick-leaved	<i>Cryptocarya meisneriana</i>	24 27
Laurel, Three-veined	<i>Cryptocarya triplinervis</i>	2 3 21 22 25
Leichhardt Bean	<i>Cassia brewsteri</i>	25
Lemon-scented Gum	<i>Corymbia citriodora</i>	7
Lennox Head Fontainea	<i>Fontainea oraria</i>	7
Leopard Ash	<i>Flindersia collina</i>	25
<i>Lepiderema pulchella</i>	Fine-leaved Tuckeroo	3 26
<i>Lepidozamia peroffskyana</i>	Shining Burrawang	1 4 5 6 7 25
Lignum-vitae	<i>Premna lignum-vitae</i>	5
Lilly Pilly, Blue	<i>Syzygium oleosum</i>	3 21
Lilly Pilly, Creek	<i>Acmena smithii</i>	3 26
Lilly Pilly, Weeping	<i>Waterhousea floribunda</i>	25
Lily, Spear	<i>Doryanthes palmeri</i>	2 22 23 26
<i>Linospadix monostachyos</i>	Walking Stick Palm	21 22
<i>Litsea reticulata</i>	Bolly Gum	6 26
<i>Livistona australis</i>	Cabbage-tree Palm	27
<i>Lomatia arborescens</i>	Smooth Lomatia	26
Lomatia, Smooth	<i>Lomatia arborescens</i>	26
Long Jack	<i>Flindersia xanthoxyla</i>	1 22
Long-leaved Bitter Bark	<i>Petalostigma triloculare</i>	6
Long-leaved Tuckeroo	<i>Cupaniopsis newmanii</i>	5 21 26
<i>Lophostemon confertus</i>	Brush Box	1 2 21 22
<i>Lophostemon suaveolens</i>	Swamp Box	24
<i>Macadamia integrifolia</i>	Smooth-shelled Macadamia	5
<i>Macadamia tetraphylla</i>	Rough-shelled Macadamia	1 5 21 22
Macadamia, Rough-shelled	<i>Macadamia tetraphylla</i>	1 5 21 22
Macadamia, Smooth-shelled	<i>Macadamia integrifolia</i>	5
Macaranga	<i>Macaranga tanarius</i>	7
<i>Macaranga tanarius</i>	Macaranga	7
Macleay Laurel	<i>Anopterus macleayanus</i>	4
Mahogany, Swamp	<i>Eucalyptus robusta</i>	7 23
Maiden's Blush	<i>Sloanea australis</i>	1 23
Malletwood	<i>Rhodamnia argentea</i>	24
<i>Mallotus claoxyloides</i>	Green Kamala	5
<i>Mallotus discolor</i>	White Kamala	3
<i>Mallotus philippensis</i>	Red Kamala	3 24
Mango Bark	<i>Canarium australasicum</i>	25
Maple, Rose	<i>Cryptocarya rigida</i>	1 27
Marara, Rose	<i>Pseudoweinmannia lachnocarpa</i>	4
Marblewood	<i>Acacia bakeri</i>	23
Mark's Cassia	<i>Cassia marksiana</i>	5
<i>Medicosma cunninghamii</i>	Pinkheart	1
<i>Meiogyne stenopetala</i>	Fissistigma	4
<i>Melaleuca quinquenervia</i>	Broad-leaved Paperbark	26
<i>Melicope elleryana</i>	Pink Euodia	1 6 22 24
<i>Melicope micrococca</i>	White Euodia	5

Index

Name	AKA	Areas
<i>Melicope vitiflora</i>	Coast Euodia	5
Milkbush	<i>Neisosperma poweri</i>	22 25
Minyon Quandong	<i>Elaeocarpus sedentarius</i>	6
<i>Mischocarpus australis</i>	Red Pear-fruit	4
<i>Mischocarpus lachnocarpus</i>	Woolly Pear-fruit	3
<i>Mischocarpus pyriformis</i>	Yellow Pear-fruit	3 7 22 25
Mock-olive, Large	<i>Notelaea longifolia</i>	6
Mock-olive, Veinless	<i>Notelaea johnsonii</i>	26
Moreton Bay Fig	<i>Ficus macrophylla</i>	25
Murrogun	<i>Cryptocarya microneura</i>	2
Muskwood	<i>Alangium villosum</i>	5
Muttonwood	<i>Myrsine variabilis</i>	1
Muttonwood, Brush	<i>Myrsine howittiana</i>	1
Muttonwood, Red	<i>Myrsine subsessilis</i>	23
<i>Myrsine howittiana</i>	Brush Muttonwood	1
<i>Myrsine subsessilis</i>	Red Muttonwood	23
<i>Myrsine variabilis</i>	Muttonwood	1
Myrtle Ebony	<i>Diospyros pentamera</i>	25
Myrtle, Brown	<i>Choricarpia leptopetala</i>	26
Myrtle, Grey	<i>Backhousia myrtifolia</i>	6
Myrtle, Plum	<i>Ptilidostigma glabrum</i>	5 23
Myrtle, Rose	<i>Archirhodomyrtus beckleri</i>	27
Myrtle, Scaly	<i>Gossia hillii</i>	26
Myrtle, Sweet	<i>Gossia fragrantissima</i>	2 26
Myrtle, Velvet	<i>Austromyrtus sp. A</i>	2
Native Celtis	<i>Celtis paniculata</i>	4
Native Frangipani	<i>Hymenosporum flavum</i>	1 7 24
Native Gardenia	<i>Atractocarpus benthamianus</i>	7
Native Guava	<i>Rhodomyrtus psidioides</i>	6
Native Holly	<i>Alchornea ilicifolia</i>	1 3
Native Olive	<i>Olea paniculata</i>	25
Native Tamarind	<i>Diploglottis australis</i>	21 22 26
<i>Neisosperma poweri</i>	Milkbush	22 25
<i>Neolitsea dealbata</i>	White Bolly Gum	5
<i>Niemeyera whitei</i>	Rusty Plum	4
<i>Notelaea johnsonii</i>	Veinless Mock-olive	26
<i>Notelaea longifolia</i>	Large Mock-olive	6
<i>Nothofagus moorei</i>	Antarctic Beech	26
Oak, Forest	<i>Allocasuarina torulosa</i>	7
Oak, Silky	<i>Grevillea robusta</i>	21 22 23
<i>Ochrosia moorei</i>	Southern Ochrosia	6
Ochrosia, Southern	<i>Ochrosia moorei</i>	6
<i>Olea paniculata</i>	Native Olive	25
Olive Plum, Red	<i>Elaeodendron australe</i>	24
Olive, Native	<i>Olea paniculata</i>	25
Olivers Sassafras	<i>Cinnamomum oliveri</i>	4
Omega	<i>Cleistanthus cunninghamii</i>	1
Onion Cedar	<i>Owenia cepiodora</i>	21
Ooline, Scrub	<i>Guilfoylia monostylis</i>	27
Orange Boxwood	<i>Denhamia celastroides</i>	3
Orange Thorn	<i>Pittosporum multiflorum</i>	21
<i>Orites excelsus</i>	Prickly Ash	4 5
<i>Owenia cepiodora</i>	Onion Cedar	21
Palm, Bangalow	<i>Archontophoenix cunninghamiana</i>	1 2 21 22 23 27
Palm, Cabbage-tree	<i>Livistona australis</i>	27
Palm, Walking Stick	<i>Linospadix monostachyos</i>	21 22
<i>Pandanus tectorius</i>	Coastal Pandanus	24
Pandanus, Coastal	<i>Pandanus tectorius</i>	24

Index

Name	AKA	Areas
Paperbark, Broad-leaved	<i>Melaleuca quinquenervia</i>	26
<i>Pararchidendron pruinatum</i>	Snowwood	21 26
Pea Tree, Golden	<i>Daviesia arborea</i>	7
Peanut Tree	<i>Sterculia quadrifida</i>	1 4 21 23
Pear-fruit, Red	<i>Mischocarpus australis</i>	4
Pear-fruit, Woolly	<i>Mischocarpus lachnocarpus</i>	3
Pear-fruit, Yellow	<i>Mischocarpus pyriformis</i>	3 7 22 25
Pencil Cedar	<i>Polyscias murrayi</i>	24
<i>Pennantia cunninghamii</i>	Brown Beech	25 26
<i>Pentaceras australe</i>	Bastard Crows Ash	2 26
Pepperberry	<i>Cryptocarya obovata</i>	2
Pepperbush, Brush	<i>Tasmannia insipida</i>	21
<i>Petalostigma triloculare</i>	Long-leaved Bitter Bark	6
Pigeonberry Ash	<i>Cryptocarya erythroxylon</i>	3
<i>Pilidiostigma glabrum</i>	Plum Myrtle	5 23
Pine, Brown	<i>Podocarpus elatus</i>	1
Pine, Coastal Cypress	<i>Callitris columellaris</i>	27
Pine, Hoop	<i>Araucaria cunninghamii</i>	21 22 23
Pine, Stringybark	<i>Callitris macleayana</i>	25
Pink Cherry	<i>Austrobuxus swainii</i>	7
Pink Euodia	<i>Melicope elleryana</i>	1 6 22 24
Pink Laceflower	<i>Archidendron grandiflorum</i>	21
Pinkheart	<i>Medicosma cunninghamii</i>	1
Pitted-leaf Steelwood	<i>Toechima tenax</i>	6 26
<i>Pittosporum multiflorum</i>	Orange Thorn	21
<i>Pittosporum oreillyanum</i>	Thorny Pittosporum	6 21
<i>Pittosporum revolutum</i>	Hairy Pittosporum	7
<i>Pittosporum undulatum</i>	Sweet Pittosporum	5
Pittosporum, Hairy	<i>Pittosporum revolutum</i>	7
Pittosporum, Sweet	<i>Pittosporum undulatum</i>	5
Pittosporum, Thorny	<i>Pittosporum oreillyanum</i>	6 21
<i>Planchonella australis</i>	Black Apple	3 22
<i>Planchonella chartacea</i>	Thin-leaved Coondoo	5
<i>Planchonella pohlmaniana</i>	Yellow Boxwood	5
<i>Pleioluma queenslandica</i>	Blush Coondoo	26
Plum Myrtle	<i>Pilidiostigma glabrum</i>	5 23
Plum, Black	<i>Diospyros australis</i>	5
Plum, Davidson	<i>Davidsonia jerseyana</i>	1 6 22 23 24
Plum, Red Olive	<i>Elaeodendron australe</i>	24
Plum, Rusty	<i>Niemeyera whitei</i>	4
Plum, Smooth Davidson	<i>Davidsonia johnsonii</i>	1
<i>Podocarpus elatus</i>	Brown Pine	1
Poinciana	<i>Delonix regia</i>	23
<i>Polyosma cunninghamii</i>	Featherwood	5
<i>Polyscias elegans</i>	Celery Wood	21 22 23
<i>Polyscias murrayi</i>	Pencil Cedar	24
Possomwood, Grey	<i>Quintinia verdonii</i>	5
<i>Premna lignum-vitae</i>	Lignum-vitae	5
Prickly Alyxia	<i>Alyxia ruscifolia</i>	21
Prickly Ash	<i>Orites excelsus</i>	4 5
Prickly Tree Fern	<i>Cyathea leichhardtiana</i>	26
<i>Pseudoweinmannia lachnocarpa</i>	Rose Marara	4
<i>Psychotria daphnoides</i>	Smooth Psychotria	6
<i>Psychotria loniceroides</i>	Hairy Psychotria	25
Psychotria, Hairy	<i>Psychotria loniceroides</i>	25
Psychotria, Smooth	<i>Psychotria daphnoides</i>	6
Purple Cherry	<i>Syzygium crebrinerve</i>	25
Python Tree	<i>Gossia bidwillii</i>	5

Index

Name	AKA	Areas
Quandong, Blue	<i>Elaeocarpus grandis</i>	1 7 21 23 25 26
Quandong, Eumundi	<i>Elaeocarpus eumundi</i>	6 26
Quandong, Hairy	<i>Elaeocarpus williamsianus</i>	7
Quandong, Hard	<i>Elaeocarpus obovatus</i>	3 5 7 21 23 26 27
Quandong, Minyon	<i>Elaeocarpus sedentarius</i>	6
Quandong, Silver	<i>Elaeocarpus kirtonii</i>	7
<i>Quassia</i> sp. Mt Nardi	Southern Quassia	3
Quassia, Southern	<i>Quassia</i> sp. Mt Nardi	3
Queensland Xylosma	<i>Xylosma terrae-reginae</i>	25
Quince, Wild	<i>Alectryon subcinereus</i>	5
Quinine Bush	<i>Alstonia constricta</i>	6
<i>Quintinia verdonii</i>	Grey Possomwood	5
<i>Randia moorei</i>	Spiny Gardenia	2
Red Apple	<i>Syzygium ingens</i>	21
Red Ash	<i>Alphitonia excelsa</i>	4 23
Red Bean	<i>Dysoxylum mollissimum</i>	2
Red Bopple Nut	<i>Hicksbeachia pinnatifolia</i>	1 3 22 23
Red Carabeen	<i>Karrabina benthamiana</i>	4
Red Cedar	<i>Toona ciliata</i>	1 21 23
Red Kamala	<i>Mallotus philippensis</i>	3 24
Red Muttonwood	<i>Myrsine subsessilis</i>	23
Red Olive Plum	<i>Elaeodendron australe</i>	24
Red Pear-fruit	<i>Mischocarpus australis</i>	4
Red-barked Sassafras	<i>Cinnamomum virens</i>	3
Red-flowered Socketwood	<i>Daphnandra tenuipes</i>	26
Red-fruited Ebony	<i>Diospyros mabacea</i>	2
<i>Rhodamnia argentea</i>	Malletwood	24
<i>Rhodamnia maideniana</i>	Smooth Scrub Turpentine	3 4
<i>Rhodamnia rubescens</i>	Scrub Turpentine	3 26
<i>Rhodomyrtus psidioides</i>	Native Guava	6
<i>Rhodosphaera rhodanthema</i>	Deep Yellowwood	4
<i>Rhysotoechia bifoliolata</i>	Twin-leaved Tuckeroo	7 26
Ribbonwood	<i>Euroschinus falcatus</i>	24
Riberry	<i>Syzygium luehmannii</i>	2
River She-oak	<i>Casuarina cunninghamiana</i>	21
Rose Maple	<i>Cryptocarya rigida</i>	1 27
Rose Marara	<i>Pseudoweinmannia lachnocarpa</i>	4
Rose Myrtle	<i>Archirhodomyrtus beckleri</i>	27
Rose Walnut	<i>Endiandra discolor</i>	4
Rosewood	<i>Dysoxylum fraserianum</i>	2 7
Rosewood, Hairy	<i>Dysoxylum rufum</i>	23 26
Rosewood, Scentless	<i>Synoum glandulosum</i>	2 3 24
Rough-leaved Elm	<i>Aphananthe philippinensis</i>	3 21
Rough-shelled Macadamia	<i>Macadamia tetraphylla</i>	1 5 21 22
Rusty Fig	<i>Ficus rubiginosa</i>	25 26
Rusty Plum	<i>Niemeyera whitei</i>	4
Saffron Heart	<i>Halfordia kendack</i>	26
Sandpaper Fig	<i>Ficus fraseri</i>	23 25
Sandpaper Fig, Creek	<i>Ficus coronata</i>	1 21 23
<i>Sarcomelicope simplicifolia</i>	Bauerella	4
<i>Sarcopteryx stipata</i>	Steelwood	4 5
Sassafras	<i>Doryphora sassafras</i>	26
Sassafras, Red-barked	<i>Cinnamomum virens</i>	3
Sassafras, Olivers	<i>Cinnamomum oliveri</i>	4
Scaly Myrtle	<i>Gossia hillii</i>	26
Scented Acronychia	<i>Acronychia littoralis</i>	4 25
Scentless Rosewood	<i>Synoum glandulosum</i>	2 3 24
<i>Schizomeria ovata</i>	Crab Apple	23

Index

Name	AKA	Areas
Scrub Beefwood	<i>Stenocarpus salignus</i>	5
Scrub Ironwood	<i>Gossia acmenoides</i>	6 7 26
Scrub Ooline	<i>Guilfoylia monostylis</i>	27
Scrub Turpentine	<i>Rhodamnia rubescens</i>	3 26
Scrub Turpentine, Smooth	<i>Rhodamnia maideniana</i>	3 4
Shatterwood	<i>Backhousia sciadophora</i>	6
She-oak, Black	<i>Allocasuarina littoralis</i>	27
She-oak, River	<i>Casuarina cunninghamiana</i>	21
Shining Burrawang	<i>Lepidozamia peroffskyana</i>	1 4 5 6 7 25
Shiny-leaved Ebony	<i>Diospyros yandina</i>	5 26
Silky Oak	<i>Grevillea robusta</i>	21 22 23
Silver Leaf	<i>Argophyllum nullumense</i>	4
Silver Quandong	<i>Elaeocarpus kirtonii</i>	7
<i>Siphonodon australis</i>	Ivorywood	25
<i>Sloanea australis</i>	Maiden's Blush	1 23
<i>Sloanea woollsii</i>	Yellow Carabeen	1
Small Bolwarra	<i>Eupomatia bennettii</i>	6
Small-leaved Fig	<i>Ficus obliqua</i>	26
Small-leaved Tamarind	<i>Diploglottis campbellii</i>	4 6 7 21 26
Smooth Davidson Plum	<i>Davidsonia johnsonii</i>	1
Smooth Helicia	<i>Helicia glabriflora</i>	25
Smooth Lomatia	<i>Lomatia arborescens</i>	26
Smooth Psychotria	<i>Psychotria daphnoides</i>	6
Smooth Scrub Turpentine	<i>Rhodamnia maideniana</i>	3 4
Smooth Tuckeroo	<i>Cupaniopsis serrata</i>	21
Smooth Wilkiea	<i>Wilkiea austroqueenslandica</i>	4 23 24 26
Smooth-shelled Macadamia	<i>Macadamia integrifolia</i>	5
Snowwood	<i>Pararchidendron pruinosum</i>	21 26
Socketwood	<i>Daphnandra micrantha</i>	4
Socketwood, Red-flowered	<i>Daphnandra tenuipes</i>	26
Soft Corkwood	<i>Ackama paniculosa</i>	25 26
Sour Cherry	<i>Syzygium corynanthum</i>	5 24
Southern Fontainea	<i>Fontainea australis</i>	7
Southern Ochrosia	<i>Ochrosia moorei</i>	6
Southern Quassia	<i>Quassia sp. Mt Nardi</i>	3
Spear Lily	<i>Doryanthes palmeri</i>	2 22 23 26
Spiny Gardenia	<i>Randia moorei</i>	2
Spotted Gum	<i>Corymbia maculata</i>	7
Steelwood	<i>Sarcopteryx stipata</i>	4 5
Steelwood, Blunt-leaved	<i>Toechima dasyrrhache</i>	1 3
Steelwood, Pitted-leaf	<i>Toechima tenax</i>	6 26
<i>Stenocarpus salignus</i>	Scrub Beefwood	5
<i>Stenocarpus sinuatus</i>	Firewheel Tree	7 21
<i>Sterculia quadrifida</i>	Peanut Tree	1 4 21 23
Stinking Cryptocarya	<i>Cryptocarya foetida</i>	2 5 24
<i>Streblus brunonianus</i>	Whalebone Tree	22
Stringybark Pine	<i>Callitris macleayana</i>	25
Strychnine Tree	<i>Strychnos axillaris</i>	26
<i>Strychnos axillaris</i>	Strychnine Tree	26
Superb Fig	<i>Ficus henneana</i>	25
Swamp Banksia	<i>Banksia robur</i>	7
Swamp Box	<i>Lophostemon suaveolens</i>	24
Swamp Mahogany	<i>Eucalyptus robusta</i>	7 23
Sweet Myrtle	<i>Gossia fragrantissima</i>	2 26
Sweet Pittosporum	<i>Pittosporum undulatum</i>	5
<i>Symplocos stawellii</i>	White Hazelwood	26
<i>Symplocos thwaitesii</i>	Bluff Hazelwood	24
<i>Synoum glandulosum</i>	Scentless Rosewood	2 3 24

Index

Name	AKA	Areas
<i>Syzygium australe</i>	Brush Cherry	5
<i>Syzygium corynanthum</i>	Sour Cherry	5 24
<i>Syzygium crebrinerve</i>	Purple Cherry	25
<i>Syzygium francisii</i>	Giant Water Gum	22 25
<i>Syzygium ingens</i>	Red Apple	21
<i>Syzygium luehmannii</i>	Riberry	2
<i>Syzygium moorei</i>	Coolamon	1 7 21 23 26 27
<i>Syzygium oleosum</i>	Blue Lilly Pilly	3 21
<i>Tabernaemontana pandacaqui</i>	Banana Bush	22 25 26
Tallowwood	<i>Eucalyptus microcorys</i>	27
Tamarind, Brown	<i>Castanospora alphandii</i>	1 2 23
Tamarind, Green	<i>Elattostachys nervosa</i>	2 4
Tamarind, Native	<i>Diploglottis australis</i>	21 22 26
Tamarind, Small-leaved	<i>Diploglottis campbellii</i>	4 6 7 21 26
Tamarind, White	<i>Elattostachys xylocarpa</i>	2
<i>Tasmannia insipida</i>	Brush Pepperbush	21
Teak, Australian	<i>Flindersia australis</i>	2 24
Thick-leaved Laurel	<i>Cryptocarya meisneriana</i>	24 27
Thin-leaved Coondoo	<i>Planchonella chartacea</i>	5
Thorn, Orange	<i>Pittosporum multiflorum</i>	21
Thorny Pittosporum	<i>Pittosporum oreillyanum</i>	6 21
Three-veined Laurel	<i>Cryptocarya triplinervis</i>	2 3 21 22 25
Tingletongue	<i>Dinosperma erythrococcum</i>	6 26
<i>Toechima dasyrrhache</i>	Blunt-leaved Steelwood	1 3
<i>Toechima tenax</i>	Pitted-leaf Steelwood	6 26
<i>Toona ciliata</i>	Red Cedar	1 21 23
Tree Fern, Prickly	<i>Cyathea leichhardtiana</i>	26
Tree Heath	<i>Trochocarpa laurina</i>	5
<i>Tristaniopsis laurina</i>	Water Gum	2 6 23
<i>Trochocarpa laurina</i>	Tree Heath	5
Tuckeroo	<i>Cupaniopsis anacardioides</i>	1 4 21 27
Tuckeroo, Fine-leaved	<i>Lepiderema pulchella</i>	3 26
Tuckeroo, Long-leaved	<i>Cupaniopsis newmanii</i>	5 21 26
Tuckeroo, Smooth	<i>Cupaniopsis serrata</i>	21
Tuckeroo, Twin-leaved	<i>Rhysotoechia bifoliolata</i>	7 26
Tulip, Blunt-leaved	<i>Harpullia hillii</i>	26 27
Tulip, Yellow	<i>Drypetes deplanchei</i>	6 25 26
Tulipwood	<i>Harpullia pendula</i>	3 21 27
Turnipwood	<i>Akania bidwillii</i>	22
Turpentine, Scrub	<i>Rhodamnia rubescens</i>	3 26
Turpentine, Smooth Scrub	<i>Rhodamnia maideniana</i>	3 4
Twin-leaved Coogera	<i>Arytera distylis</i>	3
Twin-leaved Tuckeroo	<i>Rhysotoechia bifoliolata</i>	7 26
Umbrella Cheese Tree	<i>Glochidion sumatranum</i>	3 7 23
Veinless Mock-olive	<i>Notelaea johnsonii</i>	26
Veiny Laceflower	<i>Archidendron muellerianum</i>	6 21 22 27
Veiny Wilkiea	<i>Wilkiea huegeliana</i>	3 6 23
Velvet Myrtle	<i>Austromyrtus sp. A</i>	2
Walking Stick Palm	<i>Linospadix monostachyos</i>	21 22
Walnut, Black	<i>Endiandra globosa</i>	21 22
Walnut, Blush	<i>Beilschmiedia obtusifolia</i>	5
Walnut, Crystal Creek	<i>Endiandra floydii</i>	7 23 26
Walnut, Green-leaved Rose	<i>Endiandra muelleri</i>	26
Walnut, Grey	<i>Beilschmiedia elliptica</i>	25
Walnut, Hairy	<i>Endiandra pubens</i>	21 23
Walnut, Rose	<i>Endiandra discolor</i>	4
Water Gum	<i>Tristaniopsis laurina</i>	2 6 23
Water Gum, Giant	<i>Syzygium francisii</i>	22 25

Index

Name	AKA	Areas
<i>Waterhousea floribunda</i>	Weeping Lilly Pilly	25
Wattle, Black	<i>Callicoma serratifolia</i>	22 26
Weeping Bottlebrush	<i>Callistemon viminalis</i>	21
Weeping Lilly Pilly	<i>Waterhousea floribunda</i>	25
Whalebone Tree	<i>Streblus brunonianus</i>	22
White Apple	<i>Endiandra virens</i>	26
White Ash	<i>Alphitonia petriei</i>	4
White Bark	<i>Endiandra compressa</i>	2
White Bean	<i>Ailanthus triphysa</i>	25
White Beech	<i>Gmelina leichhardtii</i>	1 7 22
White Bolly Gum	<i>Neolitsea dealbata</i>	5
White Booyong	<i>Argyrodendron trifoliolatum</i>	21 23
White Euodia	<i>Melicope micrococca</i>	5
White Fig	<i>Ficus virens</i>	21 26
White Gum	<i>Eucalyptus dunnii</i>	27
White Hazelwood	<i>Symplocos stawellii</i>	26
White Hollywood	<i>Auranticarpa rhombifolia</i>	5
White Kamala	<i>Mallotus discolor</i>	3
White Laceflower	<i>Archidendron hendersonii</i>	21 26
White Tamarind	<i>Elattostachys xylocarpa</i>	2
White Yiel Yiel	<i>Grevillea hilliana</i>	1 21
Whitewood, Broad-leaved	<i>Atalaya multiflora</i>	26
Whitewood, Brush	<i>Atalaya salicifolia</i>	26
Wild Quince	<i>Alectryon subcinereus</i>	5
<i>Wilkiea austroqueenslandica</i>	Smooth Wilkiea	4 23 24 26
<i>Wilkiea huegeliana</i>	Veiny Wilkiea	3 6 23
<i>Wilkiea macrophylla</i>	Large-leaved Wilkiea	6 22
Wilkiea, Large-leaved	<i>Wilkiea macrophylla</i>	6 22
Wilkiea, Smooth	<i>Wilkiea austroqueenslandica</i>	4 23 24 26
Wilkiea, Veiny	<i>Wilkiea huegeliana</i>	3 6 23
Wood, Celery	<i>Polyscias elegans</i>	21 22 23
Woolly Pear-fruit	<i>Mischocarpus lachnocarpus</i>	3
<i>Xanthorrhoea johnsonii</i>	Grass Tree	7
<i>Xylosma terrae-reginae</i>	Queensland Xylosma	25
Xylosma, Queensland	<i>Xylosma terrae-reginae</i>	25
Yellow Ash	<i>Emmenosperma alphitonioides</i>	4
Yellow Boxwood	<i>Planchonella pohlmaniana</i>	5
Yellow Carabeen	<i>Sloanea woollsii</i>	1
Yellow Pear-fruit	<i>Mischocarpus pyriformis</i>	3 7 22 25
Yellow Tulip	<i>Drypetes deplanchei</i>	6 25 26
Yellowwood, Deep	<i>Rhodosphaera rhodanthema</i>	4
Yiel Yiel, White	<i>Grevillea hilliana</i>	1 21