

1. EXPANDED ANPR SURVEY FOOTPRINT

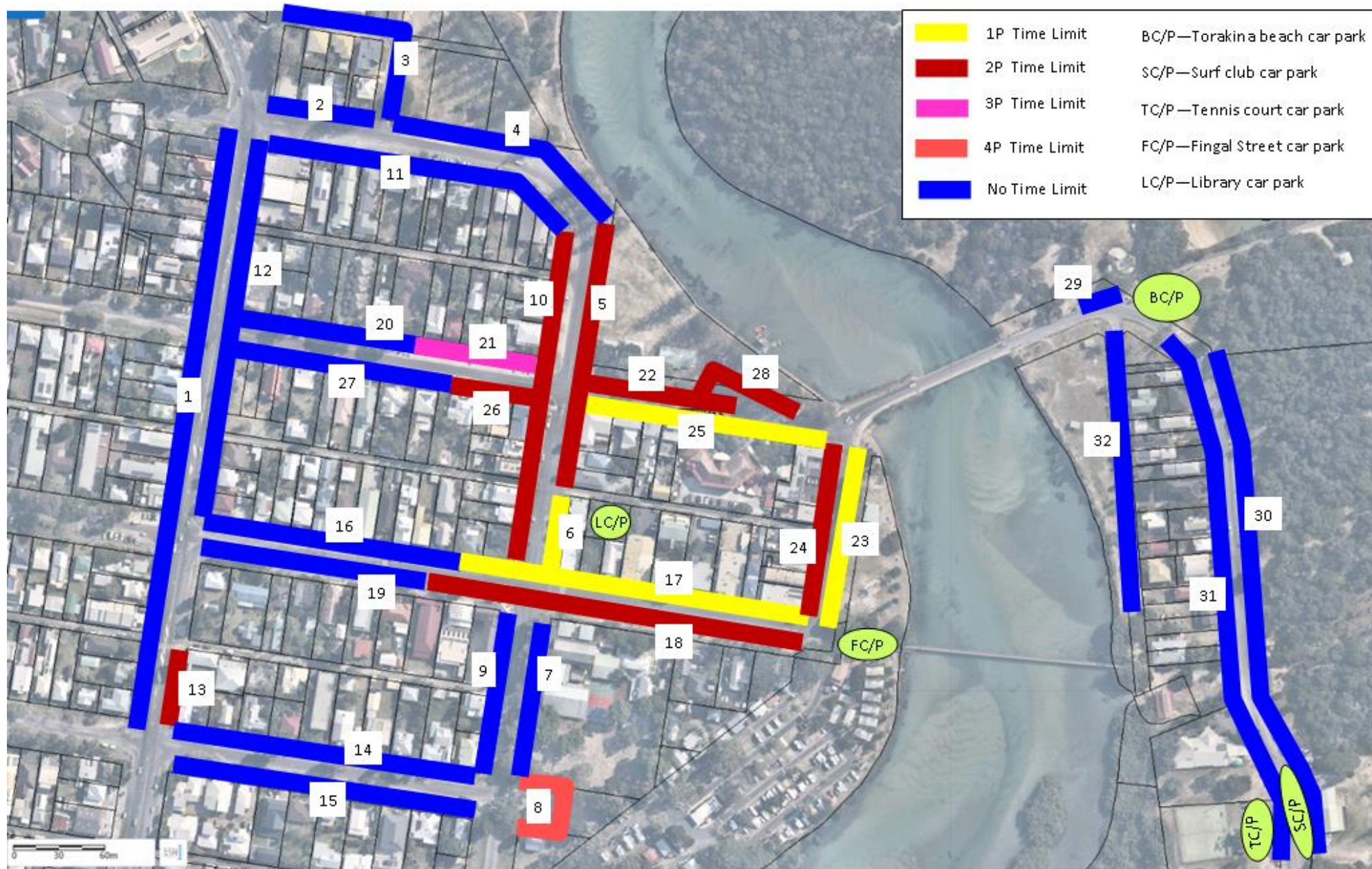


Figure 1.1a – ANPR Zone layout

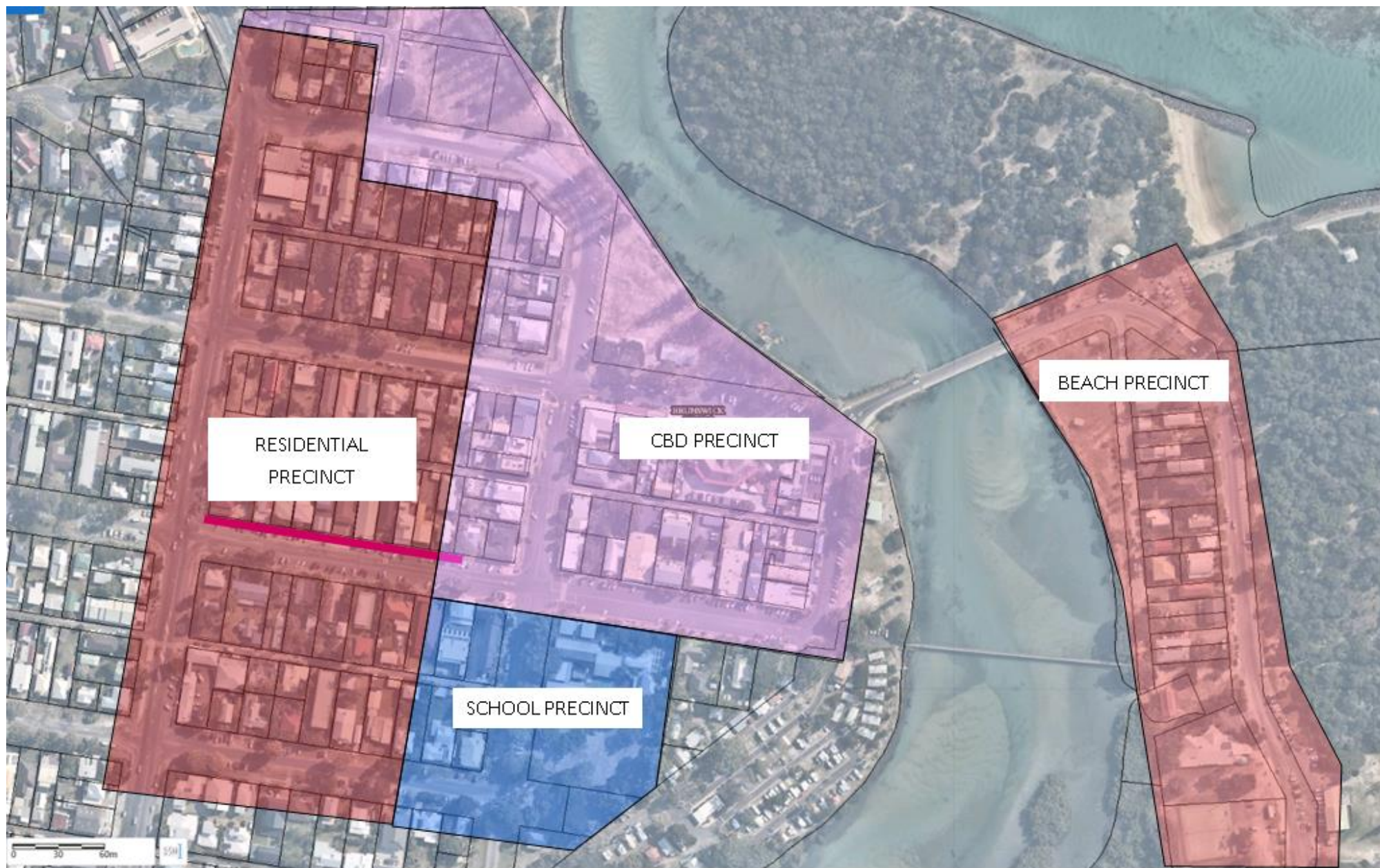


Figure 1.1b: Visual representation of Table 2 and the possible precincts within Brunswick Heads

2. OCCUPANCY RATES

The following tables show how average occupancy rates were calculated for 1P, 2P, CBD Precinct and Beach Precinct. For example, in the 1P Zones table:

- The first row shows all zones with a 1P time limit.
- The second row shows the occupancy rate for each individual zone (i.e. demand)
- The third row shows the number of cars spaces available in the zones (i.e. supply)
- The forth row is calculation multiplying Occupancy Rate x Spaces. This shows how many spaces are actually required to meet the demand.
- The fifth row calculates the Occupancy Rate (demand) for the whole combined zone.
- As an example, the occupancy rate across all 1P zones is 101.8%

The above dot points apply to the following 4 tables.

As can be seen:

- 1P zones has an occupancy rate of 101.8%,
- 2P zones has an occupancy rate of 99.4%,
- CBD precinct has an occupancy rate of 83% and
- Beach precinct has an occupancy rate of 86%.

1P Zones

1P ZONES					
Zones	6	17	23	25	
Occupancy Rate	257.4%	86.9%	102.8%	100.8%	
Spaces	4	42	19	16	81
Spaces x Oc. Rate	10.3	36.5	19.5	16.1	82.5
Occupancy Rate for all 1P areas =					101.8%

2P Zones

2P ZONES									
Zones	5	10	13	18	22	24	26	28	
Occupancy Rate	96.1%	88.6%	98.3%	82.8%	98.8%	208.3%	161.8%	105.3%	
Spaces	28	27	11	36	14	4	7	23	
Spaces x Oc. Rate	26.9	23.9	10.8	29.8	13.8	8.3	11.3	24.2	
Occupancy Rate for all 2P areas =									150
									149.2
Occupancy Rate for all 2P areas =									99.4%

CBD Precinct

Zone	3	4	5	6	10	17	18	21
Occupancy Rate	101%	60%	96%	257%	89%	87%	83%	52%
Spaces	15	30	28	4	27	42	36	31
Spaces x Oc. Rate	15.135	17.97	26.908	10.296	23.922	36.498	29.808	16.244
Zone	22	23	24	25	26	28	L/CP	213 176.781 83%
Occupancy Rate	99%	103%	208%	101%	162%	105%	89%	
Spaces	14	19	4	16	7	23	12	
Spaces x Oc. Rate	13.832	19.532	8.332	16.128	11.326	24.219	10.68	
Occupancy Rate for the CBD Precinct =								

Beach Precinct

Zone	T/CP	29	30	31	32	total
Occupancy Rate	96%	440.40%	63.50%	106.70%	83.50%	
Spaces	29	4	98	27	34	192
Spaces x Oc. Rate	27.84	17.616	62.23	28.809	28.39	164.885
Occupancy Rate for the Beach Precinct =						86%