



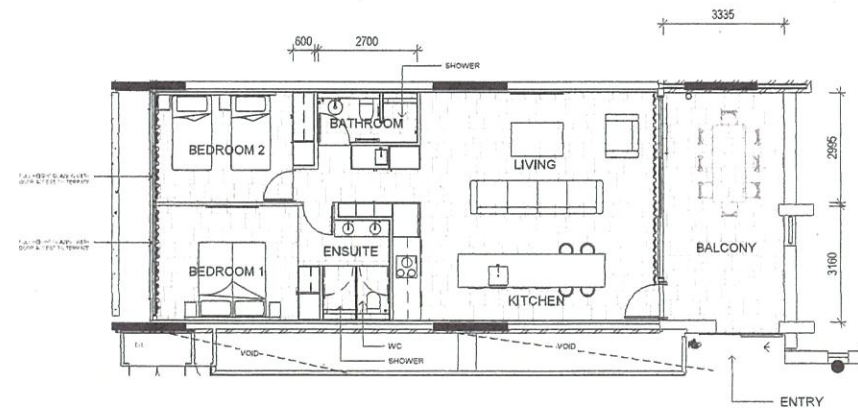
TYPICAL 2 BED APARTMENT - 1.09 + 2.09

INTERNAL	102m ²
EXTERNAL ENTRY	2m ²
EXTERNAL TERRACES	5m ²
BALCONY	23m ²
TOTAL	131m ²



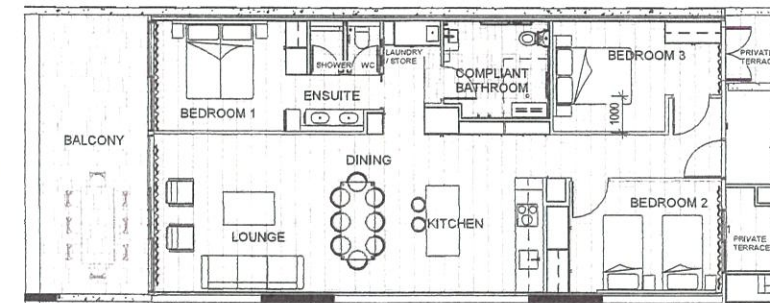
TYPICAL 3 BED APARTMENT

INTERNAL	114m ²
EXTERNAL ENTRY	2m ²
EXTERNAL TERRACES	7m ²
BALCONY	23m ²
TOTAL	146m ²



TYPICAL 2 BED APARTMENT - SIDE ACCESS - 2.10 / 2.08 (MIRRORED) + 1.10/1.08

INTERNAL	85m ²
EXTERNAL ENTRY	5m ²
EXTERNAL TERRACES	5m ²
BALCONY	19m ²
TOTAL	114m ²



TYPICAL 3 BED APARTMENT - ACCESSIBLE

INTERNAL	114m ²
EXTERNAL ENTRY	4m ²
EXTERNAL TERRACES	7m ²
BALCONY	23m ²
TOTAL	114m ²

APARTMENT NUMBER G.01 / 1.01/1.17 & 2.01
NOTE: FINAL CONFIGURATION SUBJECT TO FURTHER DESIGN DEVELOPMENT

RICHARDS&SPENCE

UPSTAIRS SHOP AM5 ADA LANE, 46 JAMES ST
FORTITUDE VALLEY
BRISBANE QLD 4006
TEL +61 7 3257 0077
INGRID@RICHARDSANDSPENCE.COM
ADRIAN@RICHARDSANDSPENCE.COM

CHECK ALL DIMENSIONS ON SITE BEFORE
FABRICATION OR SETOUT
© COPYRIGHT RICHARDS AND SPENCE PTY LTD
ANY FORM OF REPRODUCTION OF THIS
DRAWING IN FULL OR PART WITHOUT THE
WRITTEN PERMISSION OF RICHARDS AND
SPENCE PTY LTD CONSTITUTES AN
INFRINGEMENT OF COPYRIGHT

Rev	Description	By	Date
1	DEVELOPMENT APPLICATION	SH	06.05.2021
2	REVISED DA - s4.95(2)	MG	24.02.2022
3	REVISED DA - s4.95	MG	27.06.2022

Keyplan

Document Control Status
**SECTION 4.55 (2)
MODIFICATION APPLICATION**

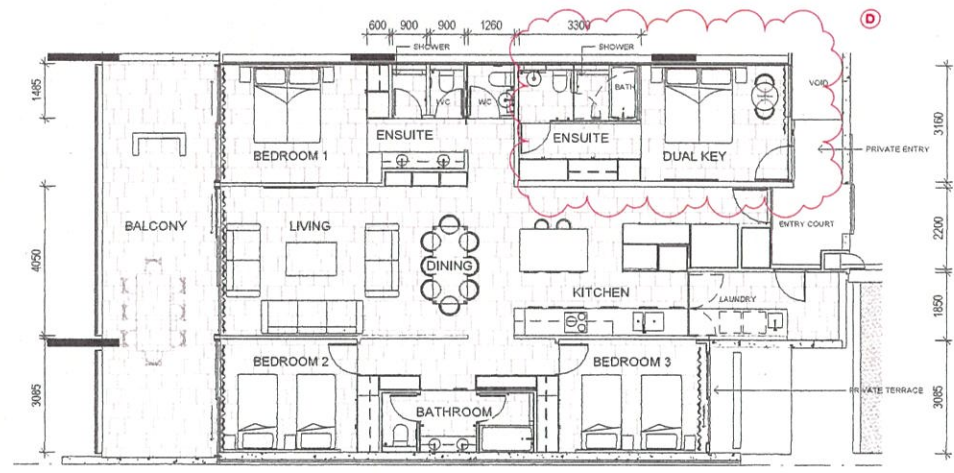
Project
116-118 JONSON ST
Client
PODIA

Northpoint

Drawing Title
PLAN - APARTMENT TYPICAL

Drawn MG	Proj Director AS/R
Proj Architect JW	Co-ordinated IR
Cad File	Scale 1:100@A1
Drawing Number A.71.01	Revision 3

2100002



TYPICAL 4 BED APARTMENT - (L1 - LEVEL 2 SIMILAR)

INTERNAL	155m ²
EXTERNAL ENTRY	2m ²
EXTERNAL TERRACES	6m ²
BALCONY	33m ²
TOTAL	197m ²

RICHARDS&SPENCE

UPSTAIRS SHOP AM5 ADA LANE, 46 JAMES ST
FORTITUDE VALLEY
BRISBANE QLD 4006
TEL +61 7 3257 0077
INFO@RICHARDSANDSPENCE.COM
ADRIAN@RICHARDSANDSPENCE.COM

CHECK ALL DIMENSIONS ON SITE BEFORE
FABRICATION OR SETOUT
© COPYRIGHT RICHARDS AND SPENCE PTY LTD

ANY FORM OF REPRODUCTION OF THIS
DRAWING IN FULL OR PART WITHOUT THE
WRITTEN PERMISSION OF RICHARDS AND
SPENCE PTY LTD CONSTITUTES AN
INFRINGEMENT OF COPYRIGHT

Rev	Description	By	Date
1	DEVELOPMENT APPLICATION	SH	05.05.2021
2	REVISED DA - s4.55(2)	MG	24.02.2022
3	REVISED DA - s4.55	MG	27.06.2022

Keyplan

Document Control Status
SECTION 4.55 (2) APPLICATION
MODIFICATION APPLICATION

Project
116-118 JONSON ST
Client
PODIA

Northpoint

Drawing Title
PLAN - APARTMENT TYPICAL

Drawn: MG	Proj Director: AS/IR
Proj Architect: JW	Co-ordinated: IR
Cad File:	Scale: 1:100@A1
Drawing Number: A.71.02	2100002 Revision: 3