

FUNDING APPLICATION

SEPTEMBER 2018

BYRON BAY SKATE SPACE

CONVIC

ACKNOWLEDGEMENTS

Convic Pty Ltd. Acknowledge the contributions of all those who participated in the consultation phase of the Byron Bay Skate Space, including the Byron Shire Council staff, residents, community groups and other stakeholders who responded to the various opportunities for input and/or who provided advice and information where required.

QUALITY INFORMATION

PROJECT NAME

Byron Bay Skate Park

PROJECT NO.

18041

PREPARED BY

Angus Ianni

REVIEWED BY

Jason Geralis

PREPARED BY

CONVIC

FOR



REVISION HISTORY

REVISION	REVISION DATE	DETAILS	AUTHORISED	
			NAME / POSITION	SIGNATURE
A	27.09.18	DRAFT ISSUE	JASON GERALIS/ DESIGN MANAGER	

© CONVIC Pty Ltd. All rights reserved.

CONVIC has prepared this document for the sole use of the Client and for a specific purpose, each as expressly stated in the document. No other party should rely on this document without the prior written consent of CONVIC. CONVIC undertakes no duty, nor accepts any responsibility, to any third party who may rely upon or use this document. This document has been prepared based on the Client’s description of its requirements and CONVIC’s experience, having regard to assumptions that CONVIC can reasonably be expected to make in accordance with sound professional principles. CONVIC may also have relied upon information provided by the Client and other third parties to prepare this document, some of which may not have been verified. Subject to the above conditions, this document may be transmitted, reproduced or disseminated only in its entirety.

CONTENTS

01 INTRODUCTION AND VISION	04	09 OVERALL LAYOUT PLAN	17
02 CONSULTATION SUMMARY	05	10 EXTENT OF SKATE PARK WORKS	18
03 SITE CONTEXT	06	11 3D RENDERS	19 - 22
04 SITE ANALYSIS	07	12 PALETTE - SKATE	23
05 SKATE CONTEXT	08 - 09	13 PALETTE - FURNITURE	24
06 SIMILAR ICONIC BEACH FACILITIES - EXAMPLES	10 - 12	14 PALETTE - LANDSCAPE	25
07 DESIGN INSPIRATION	13 - 14	15 SUMMARY / CONCLUSION	26
08 DESIGN DEVELOPMENT	15 - 16		

01

INTRODUCTION AND VISION

BACKGROUND

Byron Shire Council are proposing a new regional scale skate space within the Byron Bay area for the growing youth population and wider Byron Bay community. The facility shall compliment the existing uses and future recreational facilities proposed as part of the Byron Bay Master Plan (2016). By utilising a holistic approach the design of the Byron Bay Skate Space will result in a dynamic and activated central community hub that offers recreational and social experiences for all members of the community within a beautiful natural setting.

The Byron Bay Skate Space aims to be a regional level facility catering to the needs of young people of the Shire of Byron, and be part of the broader network of skate parks/informal youth recreation facilities available in the wider region.

The following report explains the approach and principles utilised to create a comprehensive design response. It outlines the development of the design process and how it responds to council and community feedback.

The design explores opportunities and possibilities for the holistic integration of an active youth recreation precinct with landscape amenity, increased youth activation, supporting infrastructure, circulation and access.



VISION | To create a multi-use skate and family space for all ages to enjoy. A space to play, teach and learn, through active recreation and social inclusion. A vibrant district hub designed with the community, for the community.

02

CONSULTATION SUMMARY

THE BYRON SKATE SPACE WILL PROVIDE A UNIQUE, CREATIVE FACILITY FOR A VARIETY OF USERS AND A DIVERSITY OF SKATE STYLES. IT WILL BE INVITING AND SAFE FOR THE YOUTH COMMUNITY OF BYRON BAY AND THE BROADER REGION.



DESIGN VISION

The community consultation outcomes from 30th August, 2018 have been summarised to inform a community driven design brief for the Byron Bay Skate Space. The information collected from questionnaires, group work, as well as conversations had with users have informed this brief. These are all outlined thematically and have been used as the foundation for the bespoke development of the draft concept design.

SITE INTEGRATION

There was a very strong request to ensure the facility is integrated with the adjacent Library, Child Care Centre and Youth Service. This provides an opportunity for the facility to be utilised for community events and creates a 'community hub'. The facility will offer a number of social opportunities, catering for a variety of different user groups. The provision for areas of refuge and shade throughout the day is to be considered as it will provide a family friendly and inviting space for the wider community to sit and watch the skate park, or to enjoy the wider Byron Bay setting.

TARGET USER GROUP

The consultation feedback has highlighted skateboarders as the majority users. It will, however, cater to all active wheeled sports including: BMX, roller skaters, scooters and all passive and active spectators.

SKILL LEVEL PROVISION

The majority of users were of intermediate and advanced level. The skate park design will reflect this user skill level, however, it is important to provide a facility that welcomes and provides opportunities for beginners and future generations of users. Diverse features that

can be utilised by beginners, intermediate and advanced riders will be included, encouraging natural progression of skills, as well as continual user challenge and skill development.

SKATE TYPOLOGY

The community consultation had an open forum for the skate typology discussion, with the majority of riders favouring a combination of street and transition style skate typologies. The facility design will respond to community desires, offering a variety of features that cater to all styles of skate.

SKATE OBSTACLE PROVISION

Features highly favoured by community members included; creative skate-able elements e.g. whale, unicorn, ship anchor, pole jam, manual pads, bowl, flat bar and long ledges. Another key outcome from the community was creating something different and unique from other parks in the wider area.

A wide variety of creative features will be installed to ensure a unique experience and to continue to push and encourage riders to progress their skill levels across all styles of skating.

USER + SPECTATOR AMENITIES

To ensure a central community space that can be used by a variety of different user groups, the facility will offer a number of social opportunities. The provision of areas of refuge and shade throughout the day is to be considered and allowed for within the design. Lighting, drinking fountains, art installations, BBQ facilities and bins were also considered as important amenities for both skate park users and spectators.

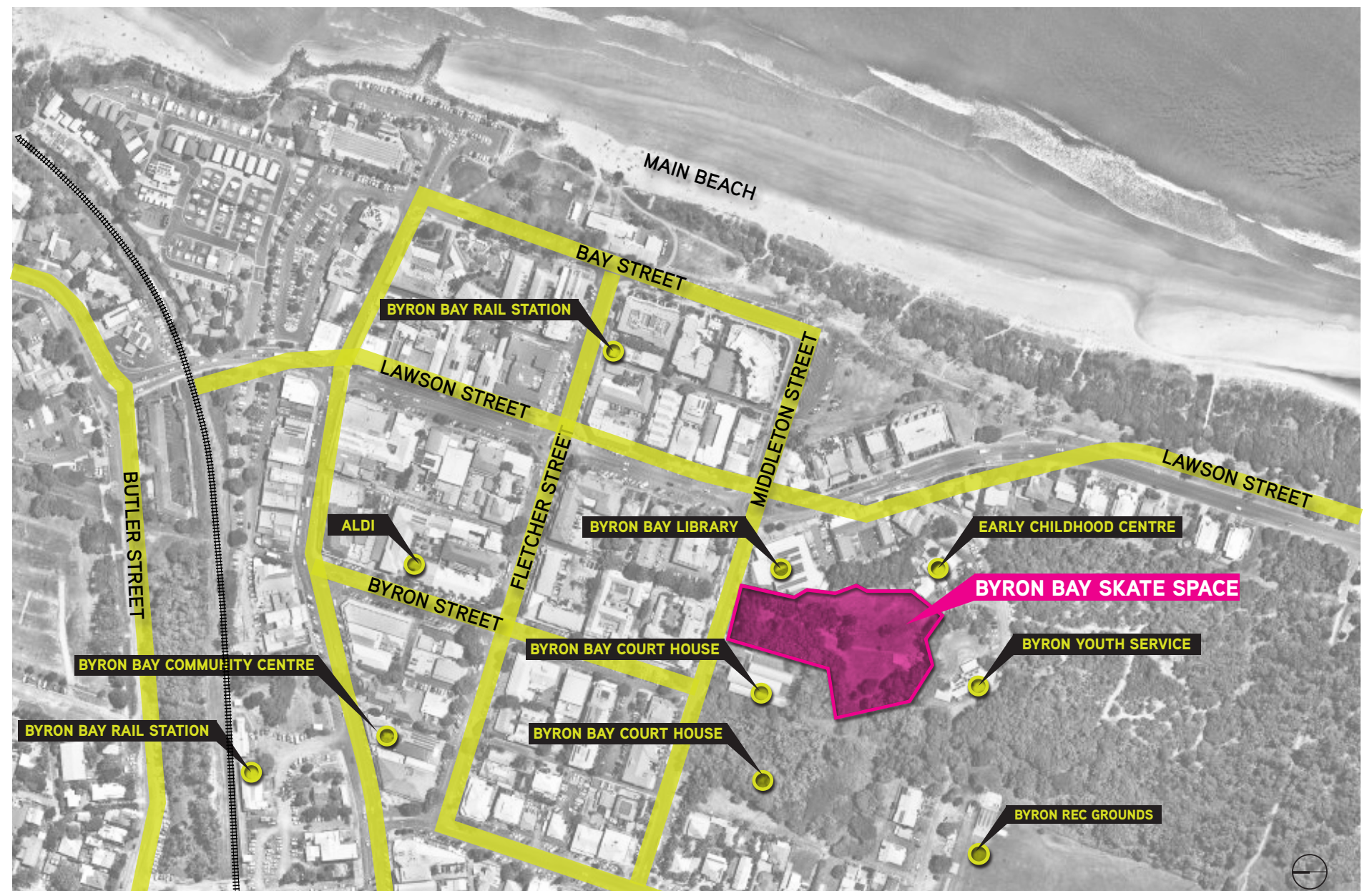
03

SITE CONTEXT

SITE

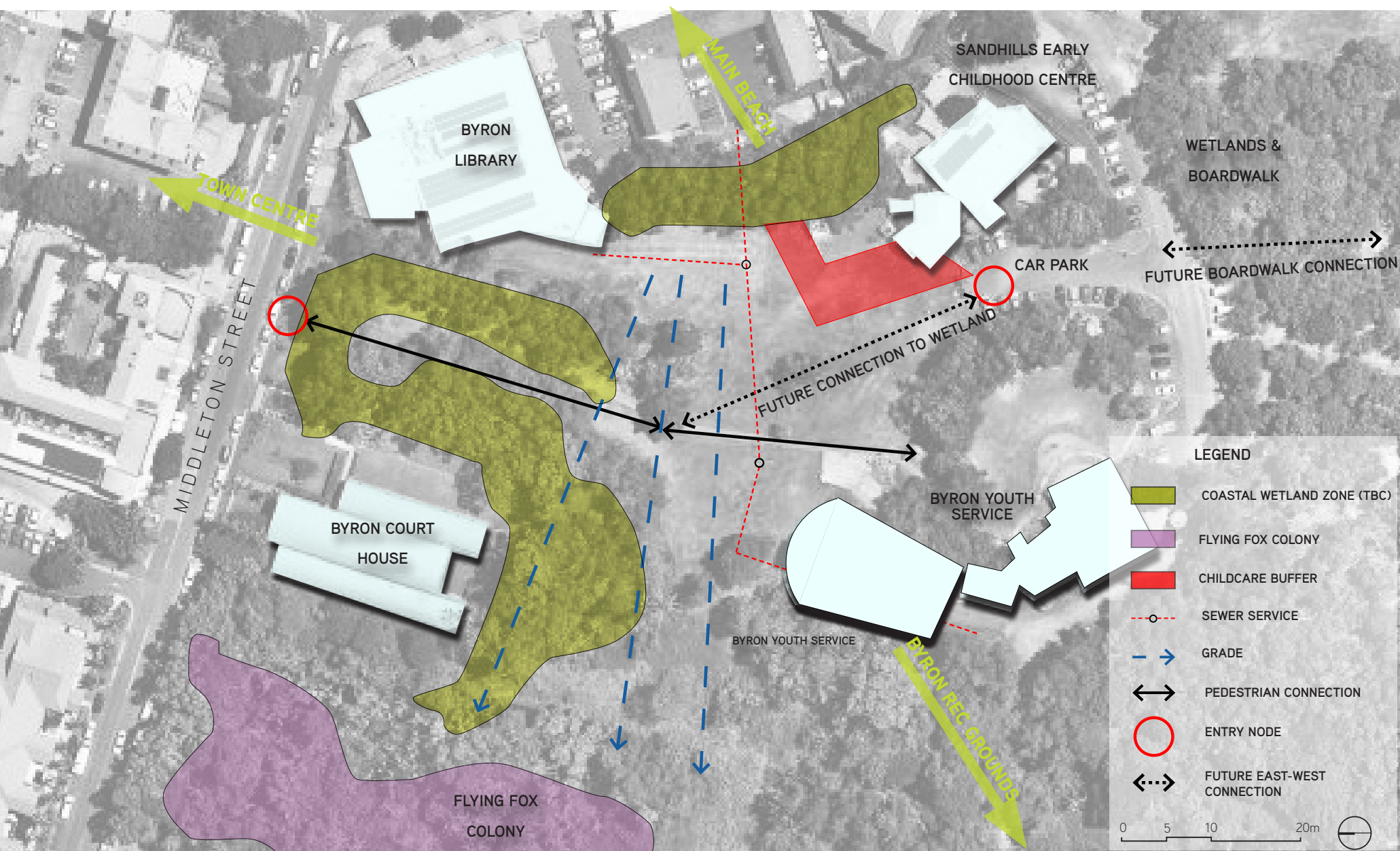
The site is located between the Byron Bay library, Early Childhood Centre, Courthouse and Youth Service (The YAC), 450m to the Byron Bay Train Station, 250m to Main Beach and in close proximity to Byron Bay Public School and Byron Bay High School.

The facility aims to generate a North - South link between Byron Bay's Recreational Grounds and Main Beach, as well a crucial East-West pedestrian connection to the town centre. After many years of consultation and a community push for a skate space in Byron Bay, council endorsed the Sandhills Estate Site as the preferred site for the Byron Bay Skate Space.



04

SITE ANALYSIS



SITE

The existing site analysis outlines a number of key considerations to address through the design process:

- Views into the site from Middleton St are limited and do not promote natural and passive surveillance. Potential to open up views and create strong east - west connection.
- Natural endangered ecologies exist on the site which may conflict with required spatial layout of the proposed facility. Exact requirements to be confirmed.
- Opportunities for adjacent existing landuse to tie into the skate space such as Youth Services and Library.
- Design to be symptahtic to Early Childhood Centre and noise implications.

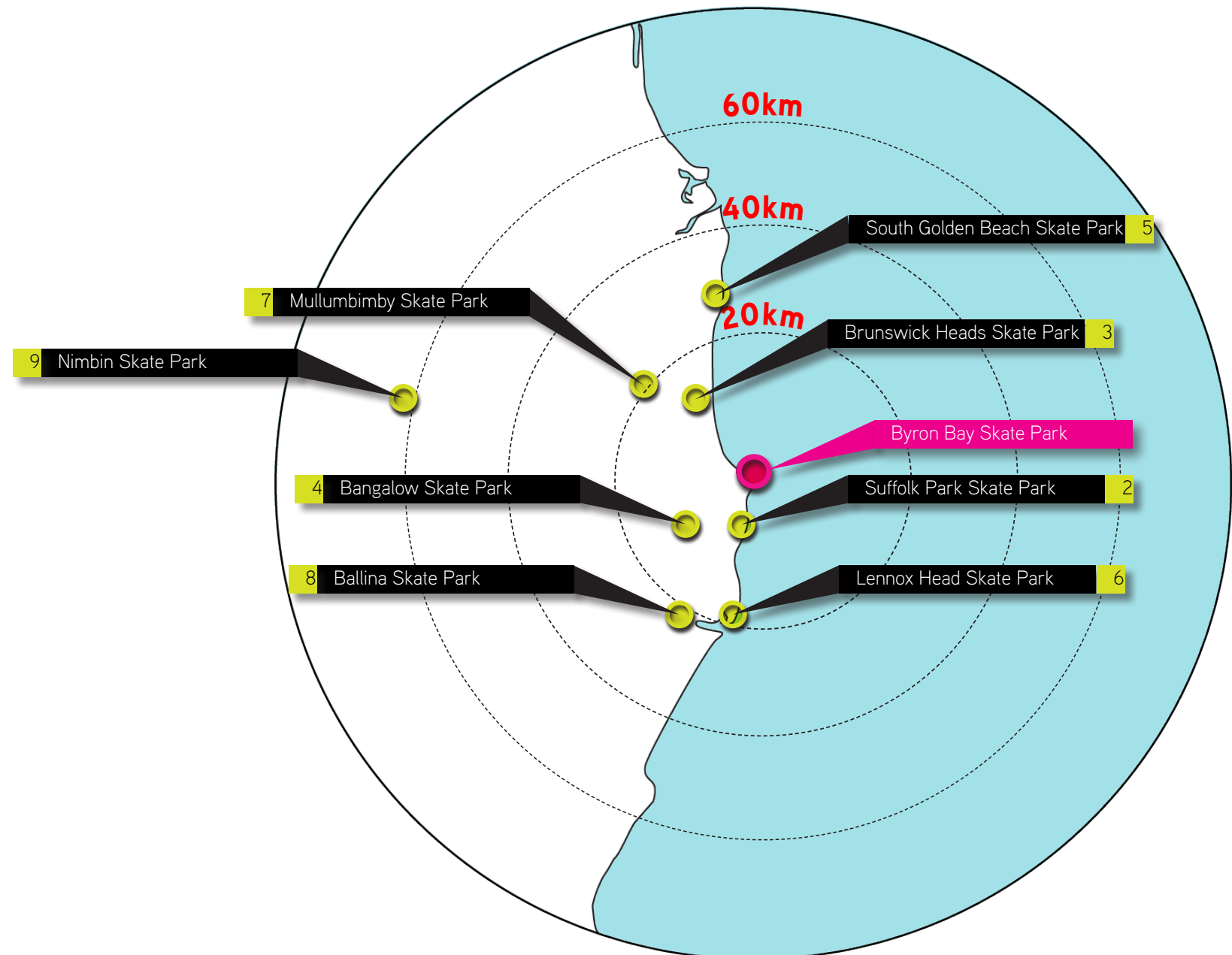
EXISTING SKATE PROVISION

SUMMARY:

The skate and action wheel sport scene is highly activated and popular within the greater New South Wales context, however, distances between parks are varied and can be up to 60km. With multiple parks located to the surrounds of Byron Bay, allowing the proposed skate park to not only become a destination but also a stepping stone for skate parks in this region and play a vital role in providing something different, adding to existing skate provision and typology.

While many youth facilities have numerous similar features due to their diversity in use, it is important to conduct a study of parks within the region of the proposed development. This further develops the typology of the proposed facility, while identifying possible gaps in skate-able/rideable features within the local skate park network.

A desktop study allows for the generation of a developed Byron Bay Skate Park design which further enriches the skate facility network. Overall many of the facilities in the surrounding area are typical early 2000's skate parks with back and forward flow and vast concrete expanse, outdated and not in line with current skate space trends.



SKATE CONTEXT



There are a number of different skate facilities within the wider South Wales Australian region (as referenced on the skate provision diagram on the previous page). These parks include:

2. Suffolk Park Skate Park (5.7km drive North) - A fun flowing style park, featuring rails, fun box, ledges and a open ended 4ft bowl.

3. Brunswick Heads Skate Bowl (16.9km drive North) - A 6ft kidney bowl with street course featuring ledges, banks and rails.

4. Bangalow Skate Park (13.7km drive North West) - Features large kidney bowl, stairs, concrete coping, flow bowl and street area with ledges and rails.

5. South Golden Beach Skate Park (29.2km drive South West) Small skate park park featuring funbox, mini ramp, quarter, flat bar and ledge.

6. Lennox Head Skate Park (20.2km drive North) Clover style bowl with metal coping, as well a street area with quaters, flat bank, fun box with ledge.

7. Mullumbimby Skate Park (20.9km drive North) A series of interconnected bowls, banks, half-pipe and small box grind box.

8. Ballina Skate Park (35.3km drive South) A large skate park containing 4 bowls of varying heights, 3 of which are joined by spines and the other sits alone as a 9ft vert bowl. The park also features ledges, euro gap bank, half pyramid with full length ledge and manual pad/grind box combo.

9. Nimbin Skate Park (64km drive North West) Another large skate park, featuring multiples bowls, large snakerun which starts off in a 5ft bowl, wraps it's way down to connect into the larger 10ft bowl. The park also includes a street section which features small quarters, ledges, rails and banks. Furthermore, unique elements such as a wooden ledge made from a tree trunk, wave ramp into a concrete seat and a concrete bench seat extending from a bank.

06

SIMILAR ICONIC BEACH FACILITIES - EXAMPLES

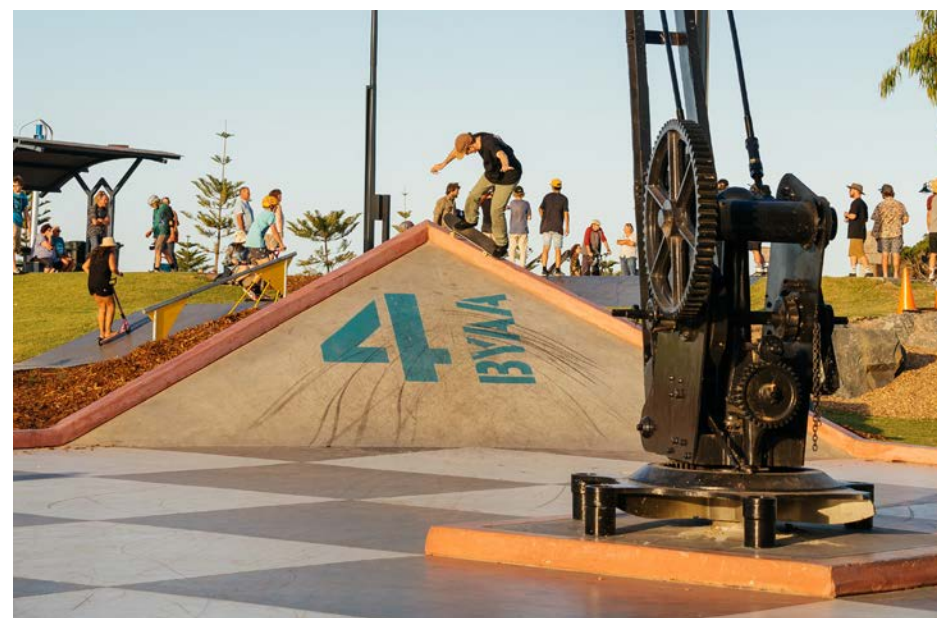


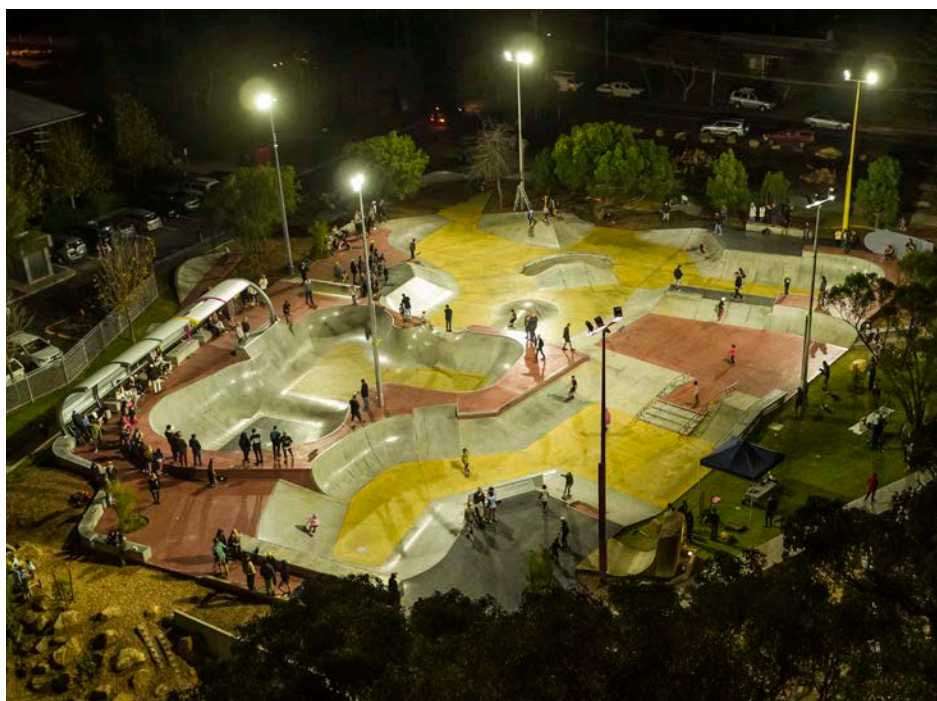
BUSSELTON YOUTH ACTIVITY AREA

CITY OF BUSSELTON | \$2.1M | 2,340SQM | 2016
SCOPE | DESIGN + CONSTRUCTION

The Busselton Youth Activity Area represents a new approach to skate park design 'exploding' the traditional mass concrete square and breaking it into several skate spaces in one. This allows the space to hold more users and maximise capacity. The area is integrated within the beautiful Busselton foreshore precinct and contains large areas of green space and parkland throughout the facility for spectators and other recreational provision.

The park includes two bowls: a mini bowl and a large bowl that is now WA's deepest bowl at 3m deep, capable of holding competition level events. It has four interconnected street areas ranging in difficulty allowing progression from beginner to advanced rider. These contain many unique obstacles as well as more traditional features that enable a range of user styles to develop for skill advancement or competitions and events.





MARGARET RIVER YOUTH PRECINCT

SHIRE OF AUGUSTA MARGARET RIVER

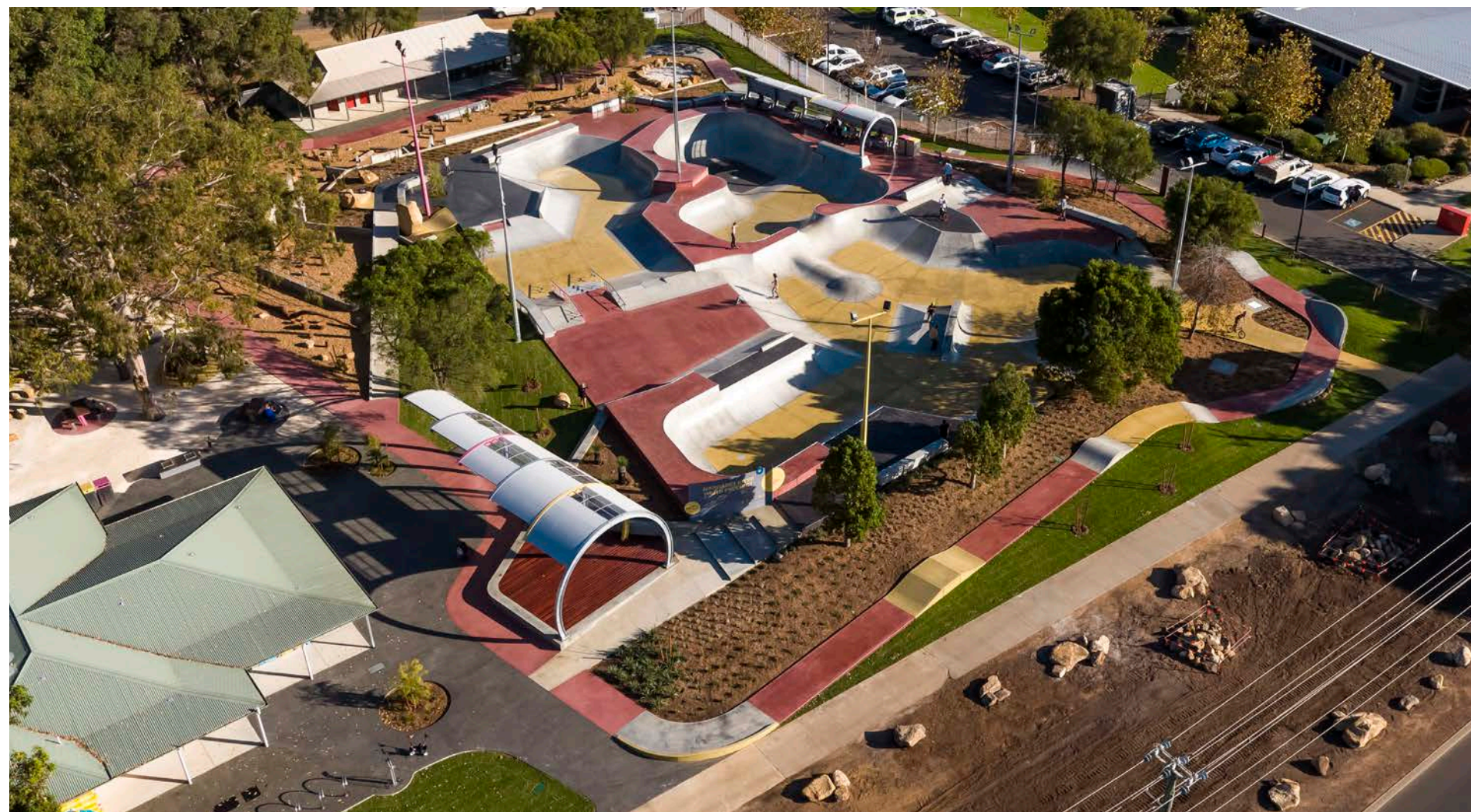
\$2.5M | 2,400SQM SKATE / 6,200SQM OVERALL | 2018

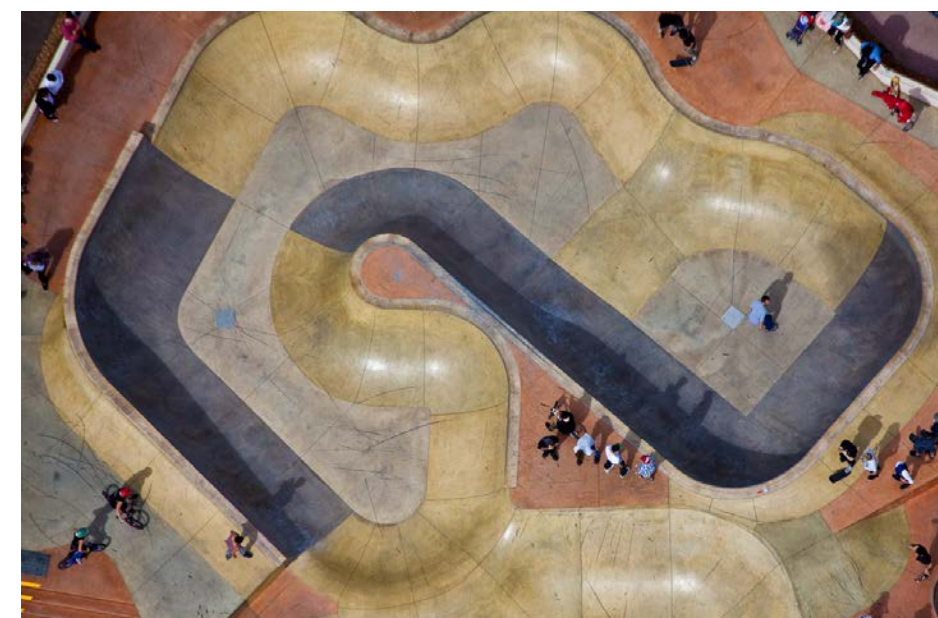
SCOPE | DESIGN + CONSTRUCTION

A benchmark in the history of CONVIC, and of modern skate culture, 20 years after its delivery, CONVIC returned to our birthplace Margaret River, and the site of our first park, to complete the design and construction of an all inclusive youth precinct, which included the upgrade and extension of the original skate park.

The Margaret River Youth Precinct has been designed as a unique youth and action sports experience. The facility caters for a range of action sports including wheeled sports, parkour and climbing/bouldering. The wheeled sports area has a number of advanced level obstacles, designed to push the limits of users, all the while catering for a large number of users of varying abilities. Also, a first of its kind, the sports area is encircled by a 250M long pump track which has been immensely popular with younger users.

More than just action sports, the precinct contains a range of additional amenity including nature play and a ropes course, picnic and BBQ facilities, a performance and spectator area, lawn and garden landscape zones and ample shaded seating for the comfort of both active and passive users.





ST KILDA MARINA RESERVE

CITY OF PORT PHILLIP | \$1M | 1,350SQM | 2013
SCOPE | DESIGN + CONSTRUCTION

With a focus on unstructured passive and active recreation catering for all age groups and abilities, Marina Reserve sits as a pivotal open space and bookend activity node to the St Kilda Esplanade. The reserve is a product of 12 years collaborative work by the community, the City and Convic.

Inspired by the ever changing nature of the coastal environment, the central youth facility area is representative of the dunal landscape. New recreational spaces such as the central lawn, playground, picnic areas and pockets of indigenous planting and shade trees combine to show the powerful coalescence between the natural and urban environment that is the St Kilda foreshore.

2014 City of Port Phillip Design Awards – Mayors Award

2014 City of Port Phillip Design Awards – Best Non-Residential Development

07

DESIGN INSPIRATION

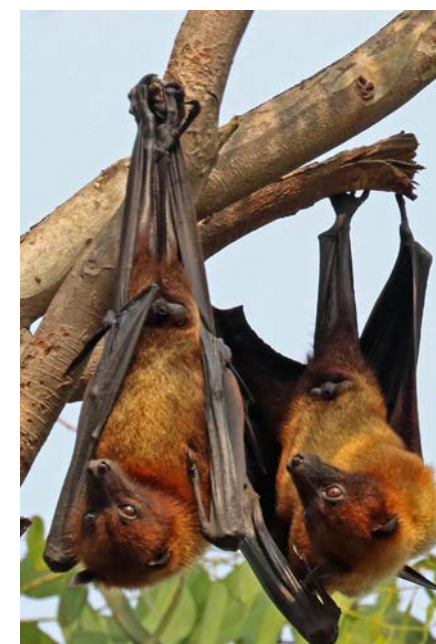
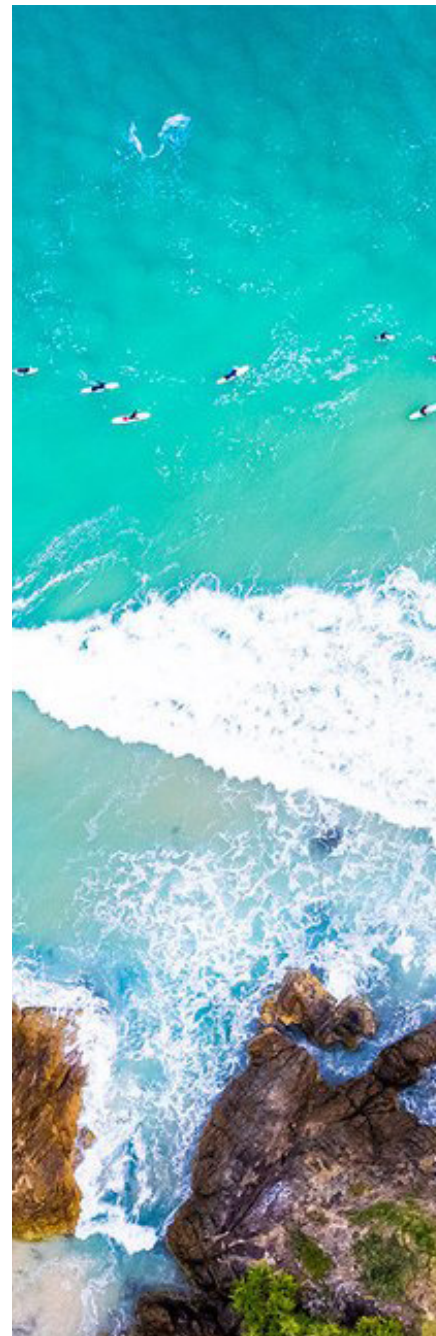
CONCEPTUAL THEMING

Byron Bay is known as a transient town with the comings and goings of people and nature, thus re-enforcing the notion of journeys and paths. The journey up to the lighthouse highlights the breath-taking landscapes from walking on beautiful white sand at the beach to the numerous green buildings, parks, gardens and tropical trees that line every street.

Byron Bay is known for its pristine coast, alternative free-spirited lifestyle, environmental consciousness and transient flux of both people and tourists coming and going.

The Byron Bay Shire's vision develops on this theme of 'the journey' through the future Sandhills Wetland development/rehabilitation project creating a east west connection across the town.

The youth space concept takes this idea a step further. Taking inspiration from the pockets of green and breaking down the traditional monolithic concrete skate park slab into multiple smaller skate pods that are set within the tropical landscape environment.



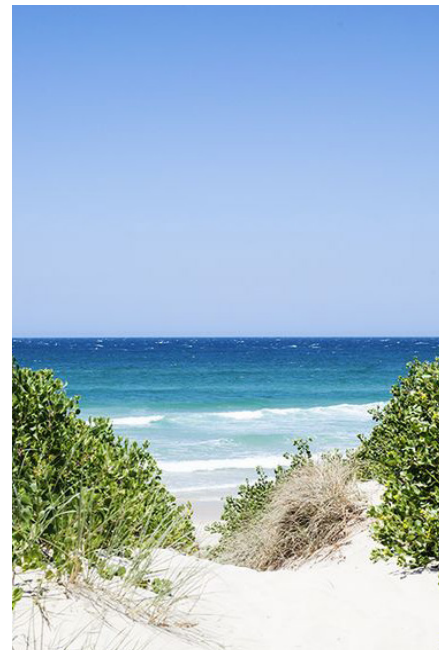
DESIGN INSPIRATION

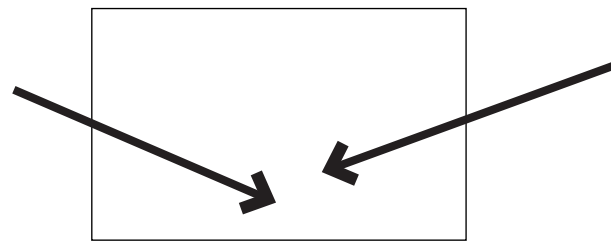
PATHWAYS AND JOURNEYS

The idea of journey and pathway is concurrent throughout both town and site, it is also reflected in the wildlife of the region. Whales migrating up and down the coast line, the flying fox bats next to site journey each night to forage for food and abundance of bird species throughout the region.

The concept embraces this notion of 'journeys' and aims to generate a space which is multi-purposed and provides an array of different experiences through use of varying materials, spaces and interconnected pathways.

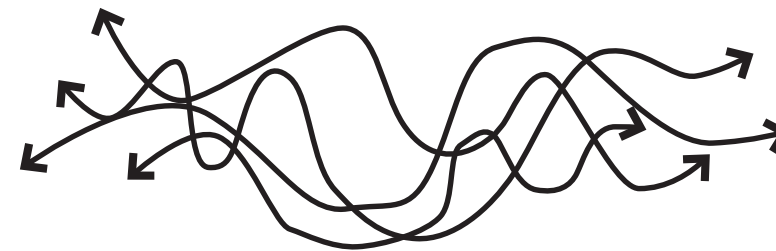
The general idea that has been the driver for the concept design is that of the transient culture and natural environment with in the Byron Bay region. This idea became apparent at the consultation with many people mentioning the 'hippy transient lifestyle' of the town as well as the Whales that many people in the area have a strong connection too.





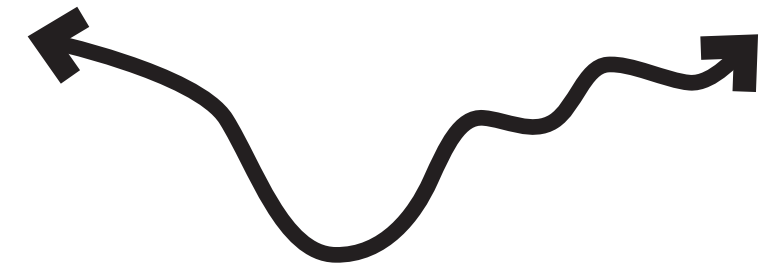
1. BRING PEOPLE IN

Two main entry points allow people to enter the space and a perimeter path provides access to seating and viewing zones, safely out of the fast paced skate flow.



2. JOURNEY

Multiple journeys reflect Byron's transient environment: whales, tourists, bats, birds and allow free movement throughout the space.



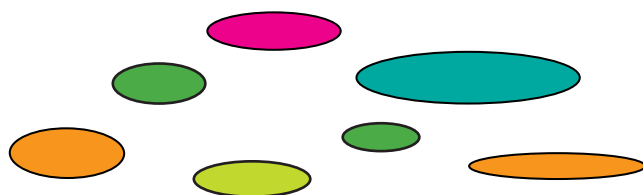
3. MAIN CONNECTOR

One main link in and out of the site (East - West link).



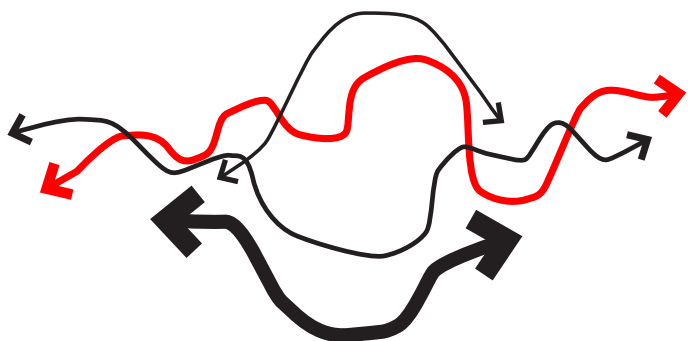
4. ZONES

Five main skate zones allow for a high capacity of use at busy periods to ensure safe skate function. Different zones cater for different styles of skate outlined at community consultation.



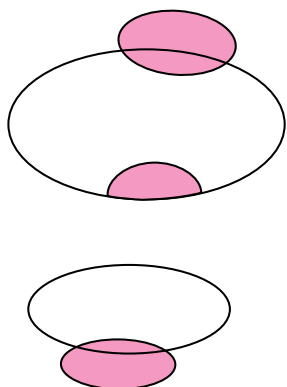
5. CHAIN

Active and passive recreation, plus art and culture zones to create an experiential walk through space.



6. PATHWAY HIERARCHY

Paths and journeys each with a distinct experience through the use of varying materials, textures, concrete, gravel and boardwalks allow different users to meander through the space and take in the spectacle.



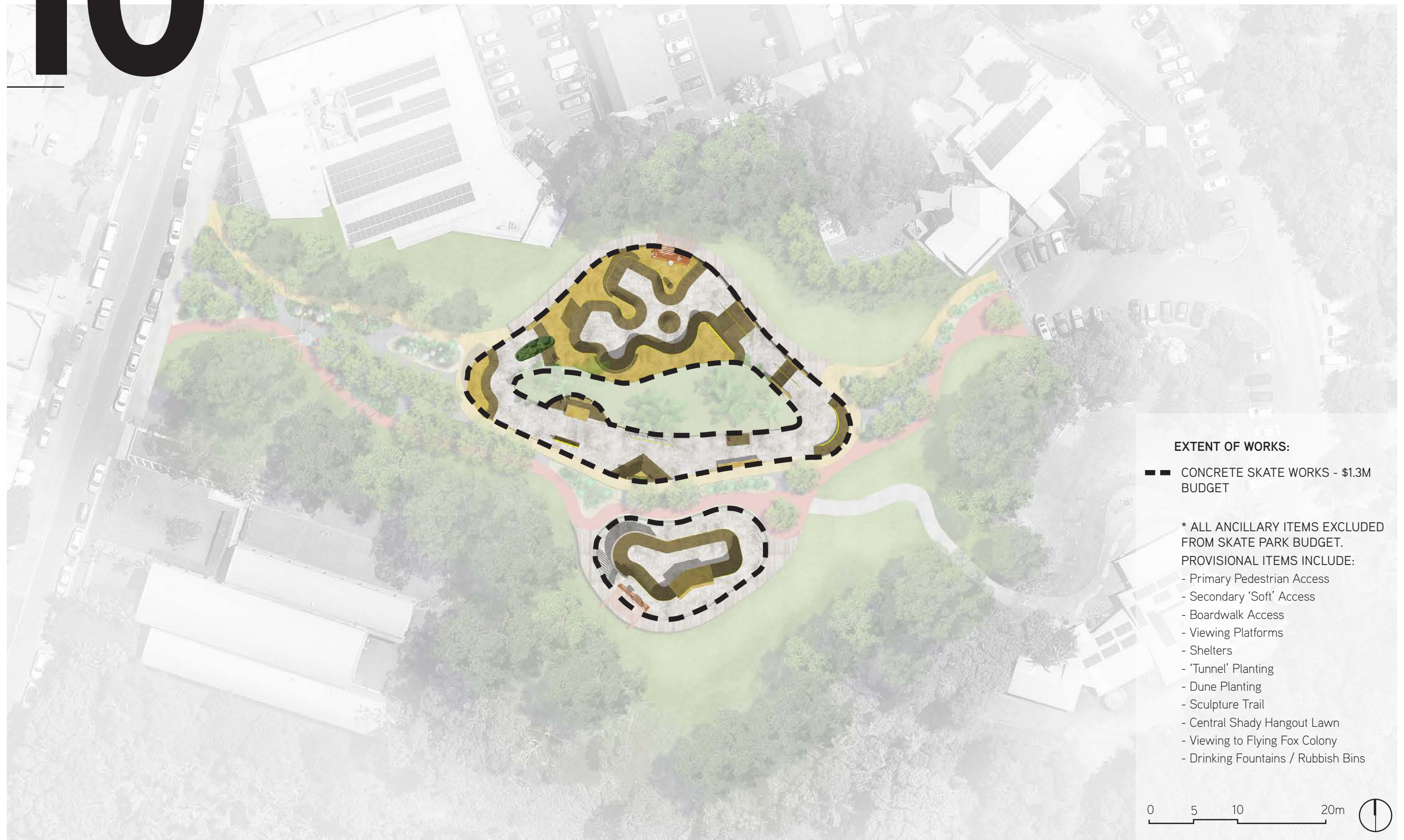
7. HANG OUT

Relaxing spaces providing shade and seating to view action and natural environment.



10

EXTENT OF SKATE PARK WORKS





0.1 OPEN FLOW BOWL



0.2 OPEN FLOW AREA + PLAZA ZONE



0.3 INTERMEDIATE - ADVANCED BOWL

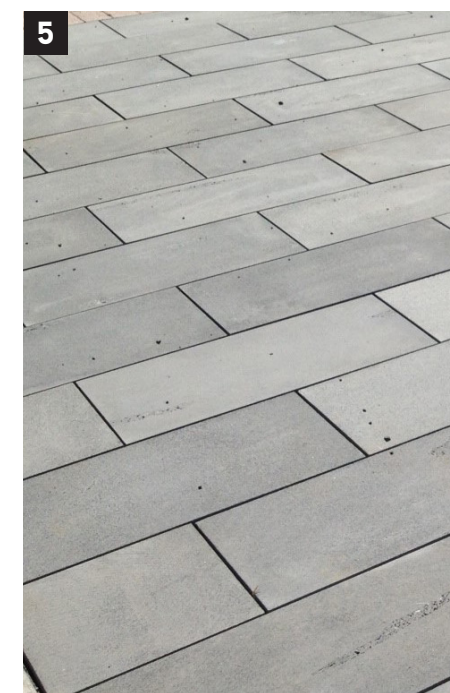
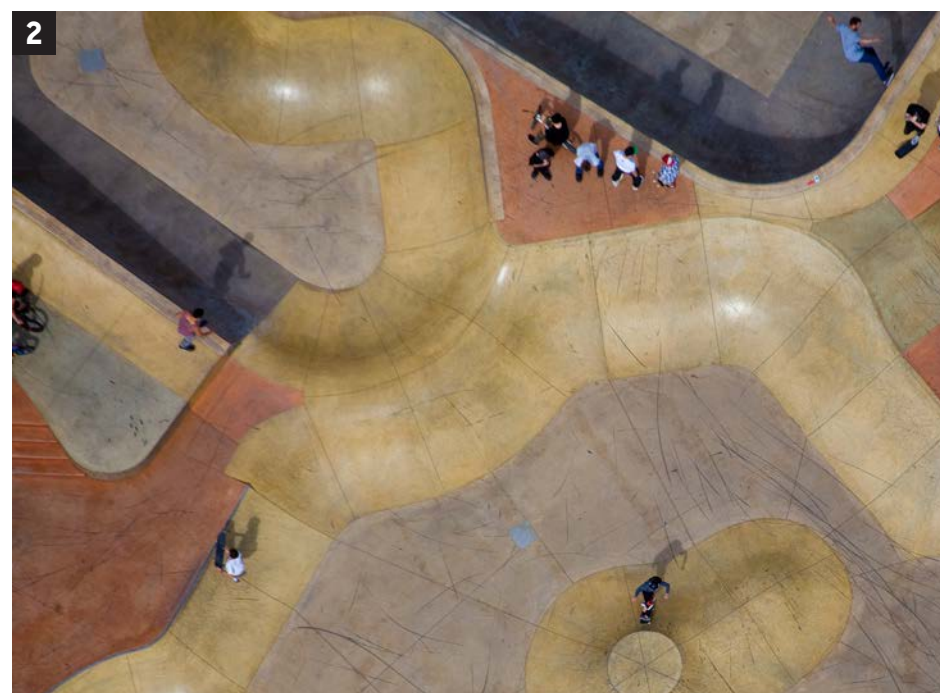
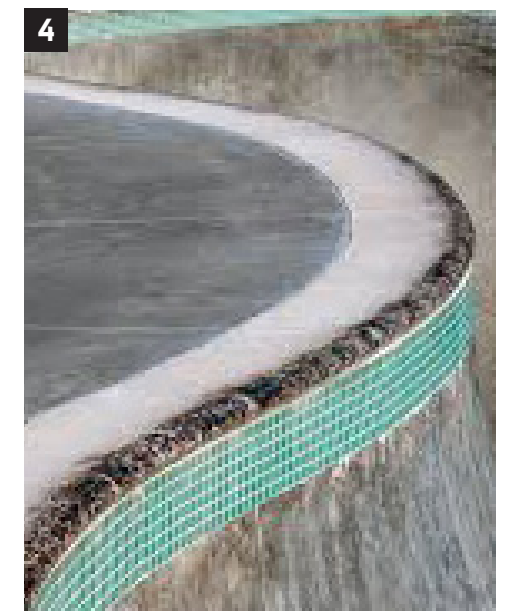


12

MATERIALS + FINISHES

Timber as well as other natural materials will be used throughout to integrate the facility into its setting. Natural tones and textural finishes with further enhance its natural sense of place.

1. Timber boardwalks
2. Earthy concrete tones
3. Feature skate rocks
4. Pool coping
5. Feature paving
6. Unique to place skate-able features



PALETTE - SKATE

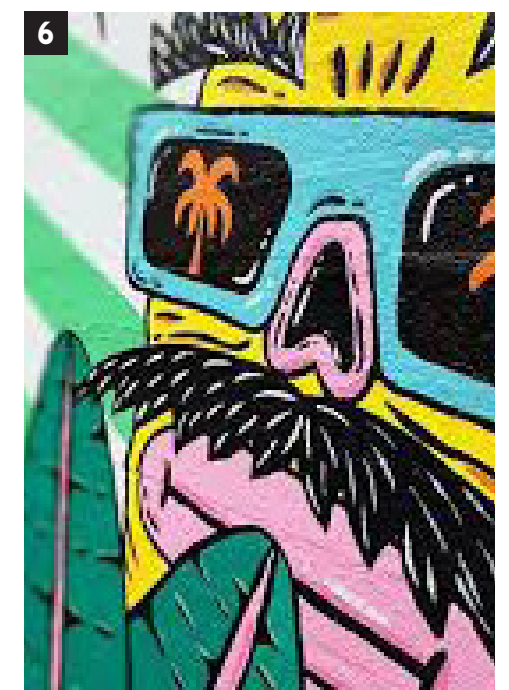
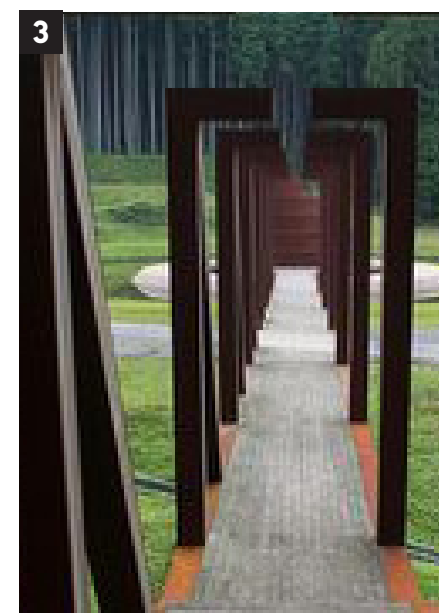
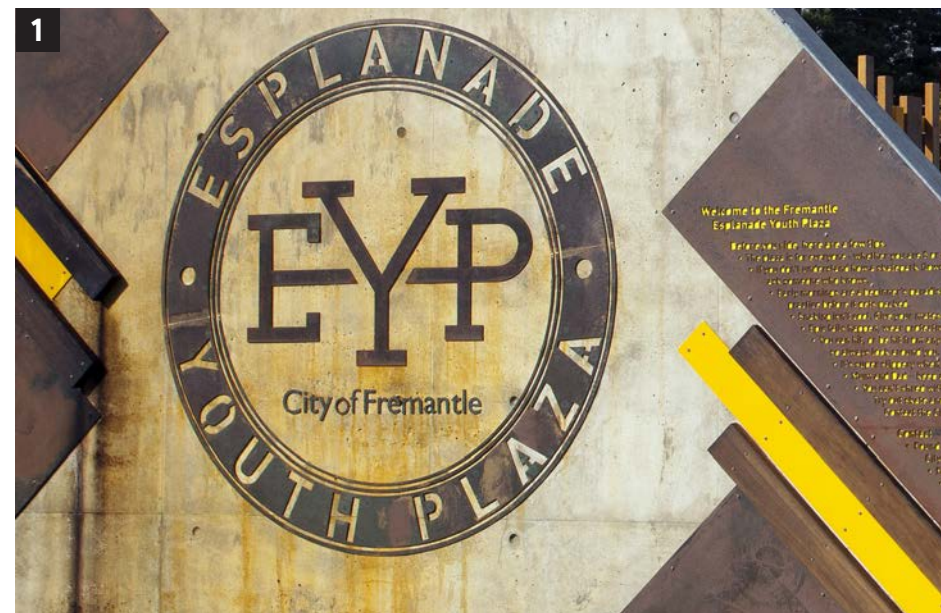
13

PALETTE - FURNITURE

REFERENCE IMAGES

Furniture and form within the youth space reflect the natural environment and culture of Byron Bay.

1. Signage and way-finding
2. Unique custom art and sculpture
3. Gateway features
4. Pop up food stalls
5. Unique sculpture to reflect local context
6. Local art installations

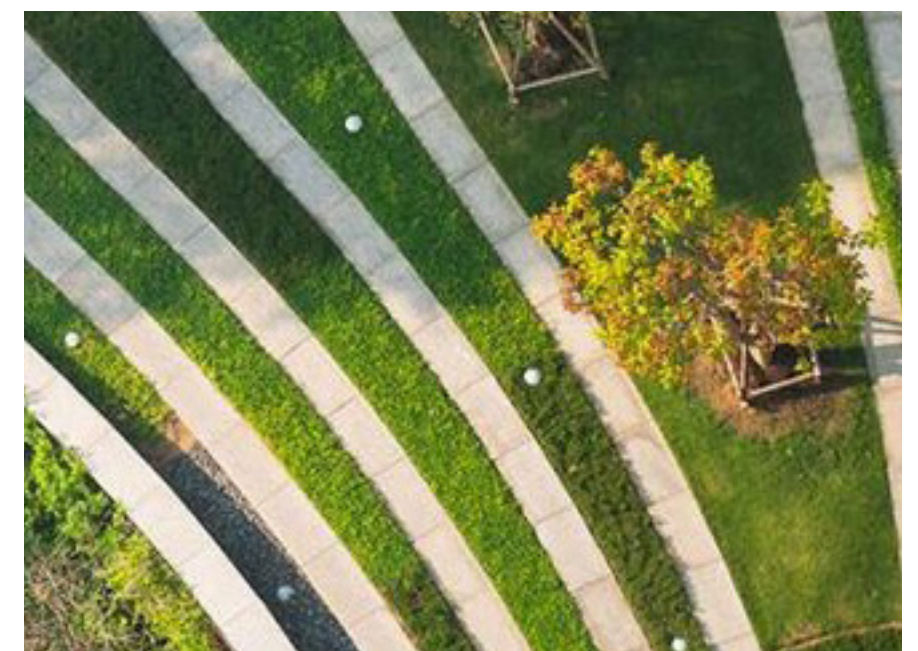
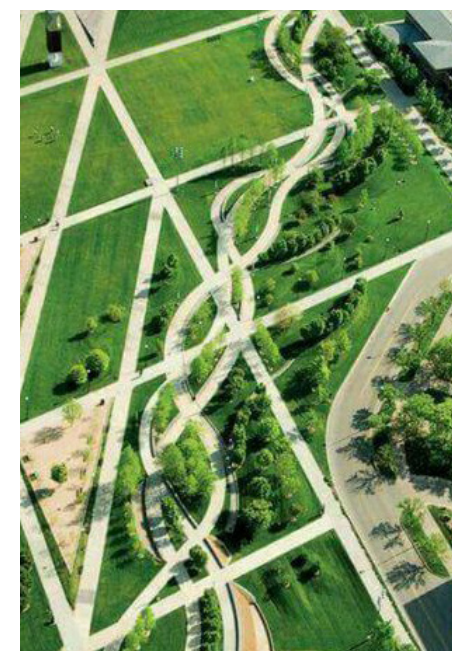
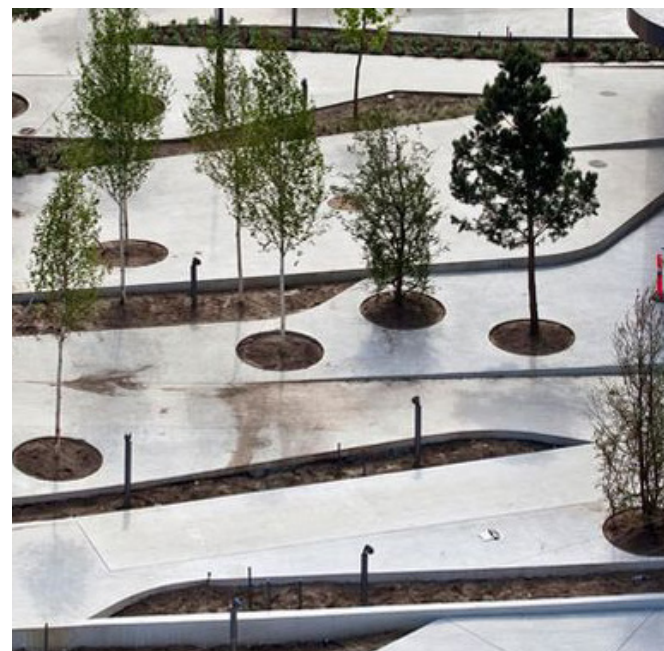
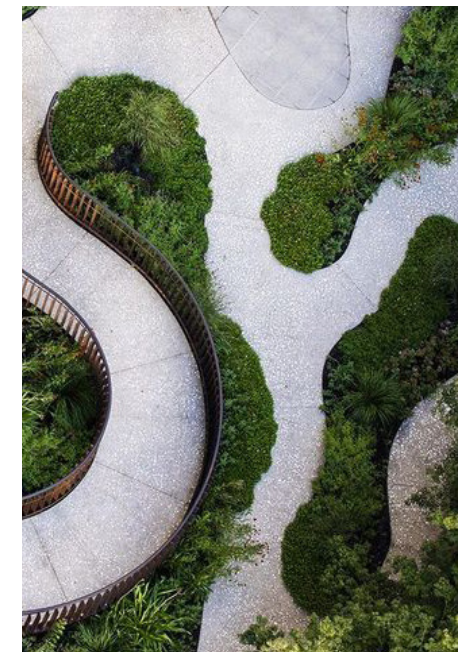


LANDSCAPE REFERENCE IMAGES

A dynamic and engaging landscape strategy defines the skate park and creates an iconic and active destination for the broader community.

A series of paths weave through the skate park, connecting and separating at points; allowing for various journeys and activities to occur throughout the pathways. The materiality of the paths each different further enhance the notions of 'journey'.

Landscape terraces, awnings and shade trees create an area of refuge from the warmer climate in summer months.



MOVING FORWARD

Upon review and endorsement of the funding application report by Council the submittal of the funding application will be made by the Byron Shire Council. The subsequent approval and granting of funds will result in a re-evaluation of the project program with the next steps involving CONVIC and the Byron Shire Council preparing for the draft concept community consultation. The current design will be consulted on with the broader community enabling interested parties to review and make comment on the design proposal. Feedback from council, stakeholders and community members will be adopted throughout the final concept design phase.

The continued involvement of the community during the draft concept stage enables the community to connect with the project design process and to ultimately have a vested interest in the final outcome. This engenders community pride and ownership in both the process and the public facility, creating a strong sense of stewardship of their community public spaces.



UNIT 13, 46-50 REGENT STREET
RICHMOND VIC 3121 AUSTRALIA
T +61 3 9486 9899 F +61 3 9486 9088
CONVIC.COM