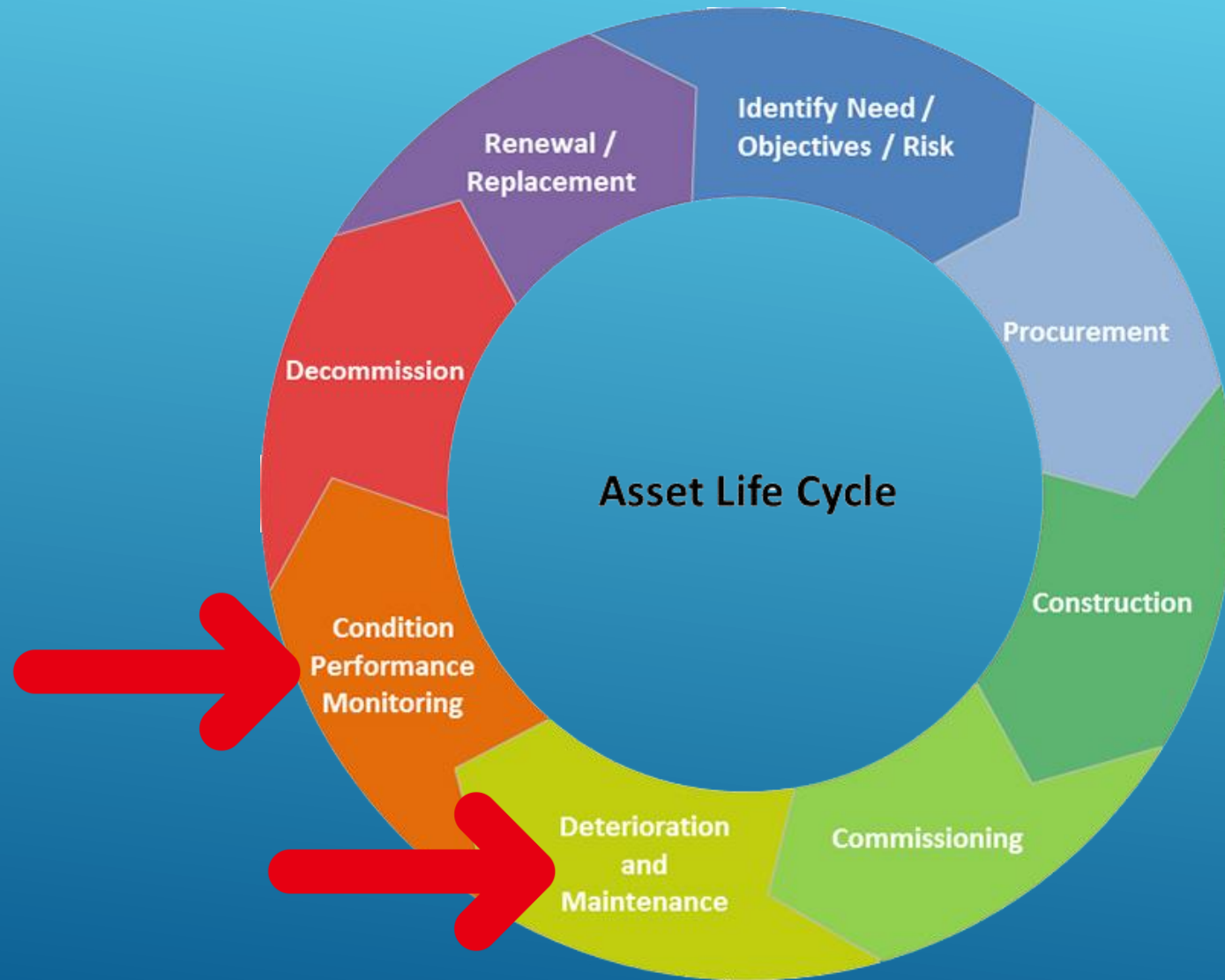




# SEWER ASSET MANAGEMENT

PREPARED BY WILLOW & SPARROW  
JULIAN VIVOLI & ALAN NEWNHAM

# ASSET MANAGEMENT



# WHAT HAVE WE ASSESSED

- 188.5km network
- 93km assessed to date (49%)

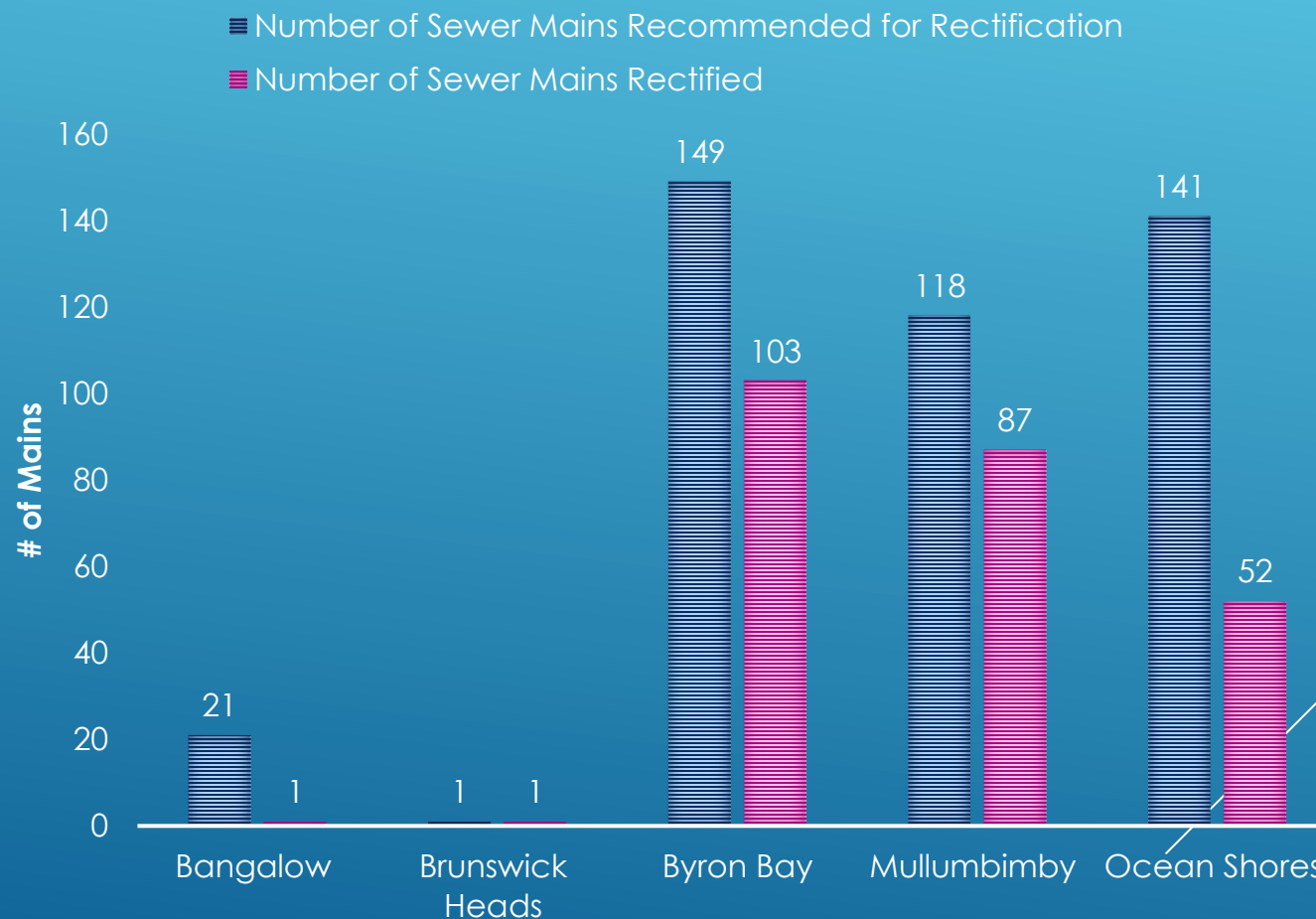
## GRAVITY SEWER CONDITION ASSESSMENT SUMMARY



# WHAT HAVE WE RECTIFIED

- 5,237 mains in total
- 430 recommended for rectification so far
- 244 have been rectified

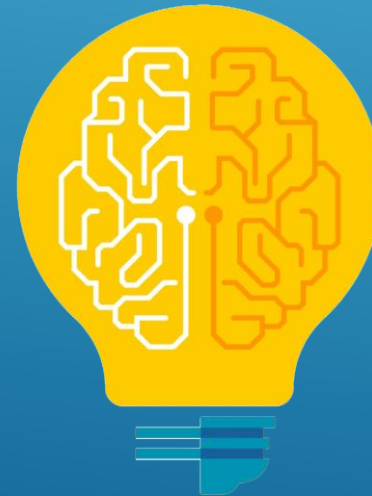
## GRAVITY SEWER RECTIFICATION SUMMARY





# WHAT HAVE WE LEARNT

- Identified hundreds of defects that were contributing to poor network performance.
- Established more economical means to deliver certain aspects of work e.g. pipe defect patching.
- Condition assessments of the gravity sewer network also serve as imperative maintenance.
- Incorporated asset management software to assist with documenting and prioritizing expenditure.
- Asset prioritisation means more targeted, evidence based and timely expenditure.



# WHAT DOES THE PATH AHEAD LOOK LIKE

- Continuation of prudent Asset Management until the entire network is assessed
- Increased capacity during wet weather events
- Managing lower risk sewer catchments
- Cost savings due to preventative works rather than reactive
- Improved serviceability and infrastructure resilience
- Data driven decision making
- Maximising asset lifespan

